

Converting Colors

XYZ(56.6475, 56.8226, 56.6974)

Have a look what the booklet for
XYZ(56.6475, 56.8226, 56.6974)
contains.

XYZ(56.6104, 56.7484, 56.6850)	3
<i>Conversions</i>	4
<i>Details</i>	6
<i>Harmonies</i>	12
<i>Previews</i>	24
<i>Color Blindness Simulation</i>	28
<i>CSS Examples</i>	31

Color

**XYZ(56.6104, 56.7484,
56.6850)**

Conversions

Conversions Part 1

Format	Color
Hex	D7C2BE
RGB	215, 194, 190
RGB Percent	84%, 76%, 75%
CMY	0.1569, 0.2392, 0.2549
CMYK	0.00, 0.10, 0.12, 0.16
HSL	10°, 24%, 79%
HSV	10°, 12%, 84%
XYZ	56.6104, 56.7484, 56.6850
YIQ	199.8230, 13.8000, 3.2080

Conversions

Conversions Part 2

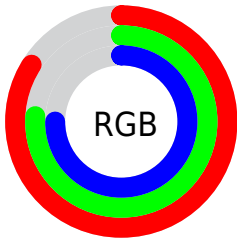
Format	Color
R _Y B	215, 195, 190
Decimal	14140094
CIE Lab	80.04, 6.73, 4.69
CIE LCh	80, 8.202, 34.888
Yxy	56.7484, 0.3329, 0.3337
Android (android.graphics.Color)	4292330174 (0xFFD7C2BE)
YUV	199.8230, -4.8427, 13.3102
Hunter-Lab	75.3315, 2.3096, 8.1179

Details

The XYZ color **56.6104, 56.7484, 56.6850** is a light color, and the websafe version is hex **CCCCCC**. A complement of this color would be **56.7949, 62.4407, 73.3494**, and the grayscale version is **54.8151, 57.6697, 62.8023**.

A 20% lighter version of the original color is **92.0602, 96.2850, 100.9216**, and **28.3906, 28.0359, 27.5820** is the 20% darker color. If you saturate the color by 10%, you get **50.6546, 48.3236, 43.9487**, and if you desaturate by 10%, it is **63.4044, 66.2935, 71.4123**.

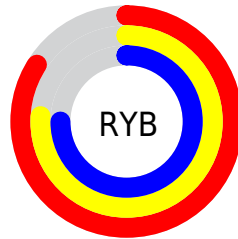
Distribution



Red (84%)

Green (76%)

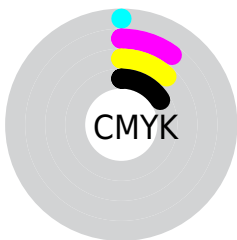
Blue (75%)



Red (84%)

Yellow (76%)

Blue (75%)

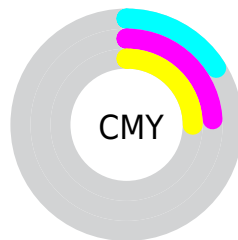


Cyan (0%)

Magenta (10%)

Yellow (12%)

Black (16%)



Cyan (16%)


Magenta (24%)


Yellow (25%)

Brightness & Saturation Gradients


These gradients show how the XYZ color 56.6104, 56.7484, 56.6850 changes by changing the brightness by 10 percent. The first figure shows a shift by +10% for each color and the second figure -10%.


Similar to the brightness gradients but the following saturation gradients show a change of the XYZ color 56.6104, 56.7484, 56.6850 by changing the saturation by 10% instead.


 56.6104, 56.7484,
56.6850

 56.6104, 56.7484,
56.6850


402.0256,
412.5059, 429.7285

 40.9314, 40.8033,
40.3447


 99.0311, 100.0980,
101.5012

 28.4530, 28.1654,
27.4916


126.5036,
128.2712, 130.8142

 18.8096, 18.4504,
17.7071

158.6380,
161.2893, 165.2885

 11.6360, 11.2738,
10.5726

195.7996,
199.5366, 205.3426

 6.5667, 6.2513,
5.6697

238.3538,
243.3975, 251.3951

 3.2365, 2.9985,
2.5798

286.6660,

 1.2801, 1.1309,

293.2564, 303.8646

0.8820

341.1015,
349.4977, 363.1696

■ 0.1682, 0.0042,
0.0000

■ 0.0000, 0.0000,
0.0000

■ 56.6104, 56.7484,
56.6850

■ 56.6104, 56.7484,
56.6850

■ 50.6546, 48.3236,
43.9487

■ 63.4044, 66.2935,
71.4123

■ 45.4996, 40.9708,
33.1143

■ 71.0626, 76.9901,
88.2071

■ 41.1124, 34.6489,
24.0913

■ 79.6157, 88.8777,
107.1465

■ 37.4558, 29.3116,
16.7805

■ 81.8346, 93.1872,
108.2815

■ 34.4891, 24.9089,
11.0731

■ 32.1681, 21.3865,
6.8475

■ 30.4427, 18.6842,
3.9651

■ 29.2553, 16.7340,
2.2604

■ 28.6091, 15.6163,
1.5064

Harmonies

Analogous

The Analogous color harmony consists of three colors that are next to each other on the color wheel.



57.1955, 56.7484, 61.0103



56.6104, 56.7484, 56.6850



55.3097, 56.7484, 53.8428

Triad

The Triadic color harmony groups three colors that are evenly spaced from another and form a triangle on the color wheel.



56.6104, 56.7484, 56.6850



51.0865, 56.7484, 57.9741



54.2113, 56.7484, 71.3966

Complementary

The Complementary color scheme is a pair of colors which are on the opposite of each other on the color wheel.



56.6104, 56.7484, 56.6850



56.7949, 62.4407, 73.3494

Split Complementary

Split-complementary colors differ from the complementary color scheme. The scheme consists of three colors, the original color and two neighbors of the complement color.



52.5885, 56.7484, 70.4817



56.6104, 56.7484, 56.6850



50.8060, 56.7484, 62.5751

Square

The Square scheme is like the rectangle color scheme, but the four colors are evenly spaced on the color wheel.



56.6104, 56.7484, 56.6850



52.1246, 56.7484, 54.5597



51.3504, 56.7484, 67.1913



55.7923, 56.7484, 69.6310

Rectangle

The Rectangle color scheme consists of four colors that form a rectangle on the color wheel.



56.6104, 56.7484, 56.6850



54.2238, 56.7484, 53.0879



51.3504, 56.7484, 67.1913



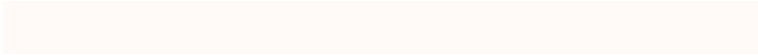
53.6525, 56.7484, 71.3932

Sweetspot

The Sweet Spot groups the original color and five complimentary colors.



56.6120, 56.7509, 56.6862



91.8271, 95.4861, 101.8700



58.2277, 55.9904, 69.5314



19.4746, 20.1854, 21.4123



0.0000, 0.0000, 0.0000



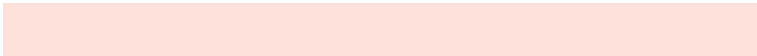
20.3446, 21.4041, 23.3091

Same Dimension

The Same Dimension uses a secret algorithm to generate beautiful new colors.



56.6120, 56.7509, 56.6862



80.9958, 80.2503, 78.4460



59.4508, 62.4286, 57.6325



12.5823, 12.7388, 12.9564



17.1623, 9.4417, 0.9179



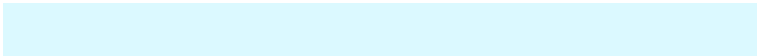
1.0864, 0.6719, 0.0724

Inverse Universe

The Inverse Universe completely reimagines the original color for something new.



56.7949, 62.4407, 73.3494



81.3167, 90.2526, 107.7424



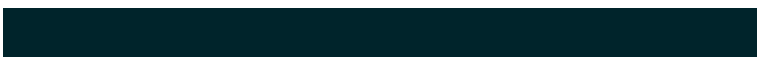
53.8676, 56.5861, 72.3737



12.6150, 13.7533, 15.9273



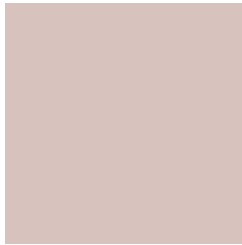
17.2320, 22.7258, 41.9315



1.0858, 1.4635, 2.5446

Previews

White Background



This preview shows how the XYZ color 56.6104, 56.7484, 56.6850 looks on a white background.

Color Contrast Check

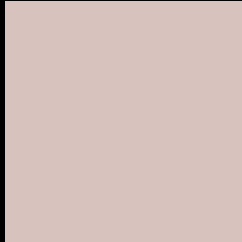
Large Text (above 18pt) WCAG AA × Fail

Any Text WCAG AA × Fail

Large Text (above 18pt) WCAG AAA × Fail

Any Text WCAG AAA × Fail

Black Background



This preview shows how the XYZ color 56.6104, 56.7484, 56.6850 looks on a black background.

Color Contrast Check

Large Text (above 18pt) WCAG AA ✓ Pass

Any Text WCAG AA ✓ Pass

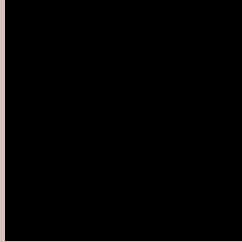
Large Text (above 18pt) WCAG AAA ✓ Pass

Any Text WCAG AAA ✓ Pass

If you want to check with other color combinations, try the [Color Contrast Checker](#).

XYZ 56.6104, 56.7484, 56.6850

Background



This preview shows how black text looks on a background with the XYZ color 56.6104, 56.7484, 56.6850.



This preview shows how white text looks on a background with the XYZ color 56.6104, 56.7484,

Color Blindness Simulation

Color vision deficiency is a very complex topic, and I could not describe the different causes any better than Wikipedia does, so if you want to learn more, you should check out their [article about color blindness](#).

Dichromacy



Original Color

56.6104, 56.7484, 56.6850

Protanopia

54.6104, 57.0313, 57.9990

Deuteranopia

57.9627, 56.7891, 56.6216



Tritanopia

58.3867, 56.4695, 66.2149

Trichromacy



Original Color

56.6104, 56.7484, 56.6850

Protanomaly

55.3826, 57.1040, 57.3934

Deuteranomaly

57.5776, 56.9177, 56.6667

Tritanomaly

57.5939, 56.4683, 62.5075

Monochromacy



Original Color

56.6104, 56.7484, 56.6850

Achromatopsia

54.8990, 57.7580, 62.8985

Achromatomaly

55.3347, 57.3528, 60.3783

CSS Examples

Text

The CSS property to change the color of the text to XYZ 56.6104, 56.7484, 56.6850 is called "color". The color property can be set on classes, ids or directly on the HTML element.

This example shows how text in the color rgb(215, 194, 190) looks like.

```
.text, #text, p{  
    color:rgb(215, 194, 190)  
}
```

If you want to add a text shadow in that color use the text-shadow property, you can generate a text shadow directly with our [CSS Text Shadow Generator](#).

Here you see how black text with a 4 pixel rgb(215, 194, 190) colored shadow looks like.

```
.shadow{ text-shadow: 4px 4px 2px rgb(215, 194, 190) }
```

Border

The CSS property to change the border of an element to XYZ 56.6104, 56.7484, 56.6850 is called "border". The border property can be set on classes, ids or directly on the HTML element.

This example shows the color as border, it can be applied via the CSS property "border" or "border-color".

```
.border, #border, table{ border:4px solid rgb(215, 194, 190) }
```


If only the border color should be changed use the property border-color.

```
.border{ border-color:rgb(215, 194, 190) }
```

If you want to add a box shadow in that color use:

Here you see how a box with a 4 pixel rgb(215, 194, 190) colored shadow looks like.

```
.boxshadow{ -moz-box-shadow:4px 4px 4px  
4px rgb(215, 194, 190); -webkit-box-  
shadow:4px 4px 4px 4px rgb(215, 194, 190);  
box-shadow:4px 4px 4px 4px rgb(215, 194,  
190) }
```

Background

The CSS property to change the background color of an element to XYZ 56.6104, 56.7484, 56.6850 is called "background". The background property can be set on classes, ids or directly on the HTML element.

```
.background, #background, body{  
background: rgb(215, 194, 190) }
```

If only the background color should be changed can be used:

```
.background{ background-color: rgb(215,  
194, 190) }
```

This example shows the color as background, it is applied via the CSS property "background".

To optimize and compress your CSS code, you can use our [online CSS compressor and optimizer](#) based on csstidy. If you want to create a linear or radial gradient as background or border, check our [CSS Gradient Generator](#).

Hey! You found this booklet interesting? Support Converting Colors with the new Membership Option!

The pro membership hides all ads, plus gives you double the colors in the color bucket, and more awesome pro features!

[Learn more, Memberships starting at \\$2.50/m!](#)

**Follow me
on Twitter!**

@ConvertingColor