

Converting Colors

XYZ(56.6556, 54.2273, 54.4945)

Have a look what the booklet for
XYZ(56.6556, 54.2273, 54.4945)
contains.

XYZ(56.6527, 54.2353, 54.4962)	3
<i>Conversions</i>	4
<i>Details</i>	6
<i>Harmonies</i>	12
<i>Previews</i>	24
<i>Color Blindness Simulation</i>	28
<i>CSS Examples</i>	31

Color

**XYZ(56.6527, 54.2353,
54.4962)**

Conversions

Conversions Part 1

Format	Color
Hex	DEBABB
RGB	222, 186, 187
RGB Percent	87%, 73%, 73%
CMY	0.1294, 0.2706, 0.2667
CMYK	0.00, 0.16, 0.16, 0.13
HSL	358°, 35%, 80%
HSV	358°, 16%, 87%
XYZ	56.6527, 54.2353, 54.4962
YIQ	196.8780, 21.1350, 7.9430

Conversions

Conversions Part 2

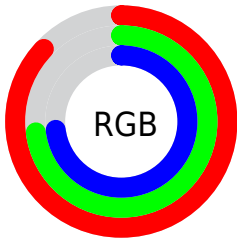
Format	Color
R _Y B	222, 186, 187
Decimal	14596795
CIE Lab	78.60, 13.04, 4.31
CIE LCh	79, 13.729, 18.288
Yxy	54.2353, 0.3426, 0.3279
Android (android.graphics.Color)	4292786875 (0xFFDEBABB)
YUV	196.8780, -4.8699, 22.0320
Hunter-Lab	73.6446, 8.4369, 7.6773

Details

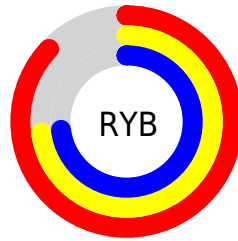
The XYZ color **56.6527, 54.2353, 54.4962** is a light color, and the websafe version is hex **FFCCCC**. A complement of this color would be **59.4242, 67.9033, 78.3846**, and the grayscale version is **53.0181, 55.7792, 60.7435**.

A 20% lighter version of the original color is **89.1698, 91.2353, 97.7044**, and **28.4165, 26.6033, 26.1915** is the 20% darker color. If you saturate the color by 10%, you get **50.1944, 44.7428, 41.7865**, and if you desaturate by 10%, it is **64.1880, 65.3248, 69.2799**.

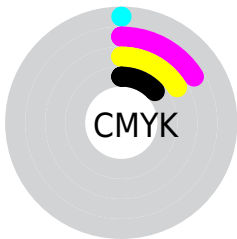
Distribution



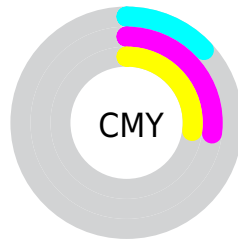
- Red (87%)
- Green (73%)
- Blue (73%)



- Red (87%)
- Yellow (73%)
- Blue (73%)



- Cyan (0%)
- Magenta (16%)
- Yellow (16%)
- Black (13%)



- Cyan (13%)
- Magenta (27%)
- Yellow (27%)

Brightness & Saturation Gradients

These gradients show how the XYZ color 56.6527, 54.2353, 54.4962 changes by changing the brightness by 10 percent. The first figure shows a shift by +10% for each color and the second figure -10%.

Similar to the brightness gradients but the following saturation gradients show a change of the XYZ color 56.6527, 54.2353, 54.4962 by changing the saturation by 10% instead.

56.6527, 54.2353,
54.4962

56.6527, 54.2353,
54.4962

402.1819,
403.0066, 421.2274

40.9655, 38.7898,
38.6026

99.0925, 96.4196,
98.2662

28.4797, 26.5963,
26.1453

126.5759,
123.9273, 126.9796

18.8299, 17.2702,
16.7056

158.7221,
156.2244, 160.8035

11.6507, 10.4273,
9.8651

195.8963,
193.6955, 200.1562

6.5768, 5.6832,
5.2052

238.4641,
236.7249, 245.4565

3.2428, 2.6534,
2.3073

286.7907,

1.2834, 0.9536,

285.6969, 297.1227

0.7353

341.2415,
340.9960, 355.5735

■ 0.1708, 0.0000,
0.0000

■ 0.0000, 0.0000,
0.0000

■ 56.6527, 54.2353,
54.4962

■ 56.6527, 54.2353,
54.4962

■ 50.1944, 44.7428,
41.7865

■ 64.1880, 65.3248,
69.2799

■ 44.7598, 36.7669,
31.0548

■ 72.8415, 78.0723,
86.2208

■ 40.2975, 30.2312,
22.2028

■ 82.6578, 92.5445,
105.4018

■ 36.7503, 25.0499,
15.1223

■ 83.9343, 94.2697,
108.3798

■ 34.0547, 21.1281,
9.6940

■ 32.1393, 18.3584,
5.7843

■ 30.9210, 16.6159,
3.2385

■ 30.2970, 15.7447,
1.8689

■ 30.1580, 15.5431,
1.5870

Harmonies

Analogous

The Analogous color harmony consists of three colors that are next to each other on the color wheel.



56.8175, 54.2353, 62.1322



56.6527, 54.2353, 54.4962



55.0919, 54.2353, 48.6059

Triad

The Triadic color harmony groups three colors that are evenly spaced from another and form a triangle on the color wheel.



56.6527, 54.2353, 54.4962



47.7589, 54.2353, 49.6759



50.4993, 54.2353, 74.8914

Complementary

The Complementary color scheme is a pair of colors which are on the opposite of each other on the color wheel.



56.6527, 54.2353, 54.4962



59.4242, 67.9033, 78.3846

Split Complementary

Split-complementary colors differ from the complementary color scheme. The scheme consists of three colors, the original color and two neighbors of the complement color.



48.1614, 54.2353, 70.8991



56.6527, 54.2353, 54.4962



46.6168, 54.2353, 56.0773

Square

The Square scheme is like the rectangle color scheme, but the four colors are evenly spaced on the color wheel.



56.6527, 54.2353, 54.4962



49.9323, 54.2353, 45.9954



46.7615, 54.2353, 63.8570



53.2002, 54.2353, 74.3739

Rectangle

The Rectangle color scheme consists of four colors that form a rectangle on the color wheel.



56.6527, 54.2353, 54.4962



53.4994, 54.2353, 46.2539



46.7615, 54.2353, 63.8570



49.6466, 54.2353, 74.0190

Sweetspot

The Sweet Spot groups the original color and five complimentary colors.



56.6542, 54.2377, 54.4973



89.1843, 91.3603, 97.4136



60.5031, 55.7350, 76.6766



18.9194, 19.3050, 20.5180



0.0000, 0.0000, 0.0000



20.3446, 21.4041, 23.3091

Same Dimension

The Same Dimension uses a secret algorithm to generate beautiful new colors.



56.6542, 54.2377, 54.4973



74.8156, 70.2166, 69.2136



60.2974, 61.6941, 55.1876



13.7225, 13.7066, 14.3090



17.9199, 9.2349, 0.9778



1.2476, 0.6423, 0.0967

Inverse Universe

The Inverse Universe completely reimagines the original color for something new.



56.6542, 54.2377, 54.4973



74.8156, 70.2166, 69.2136



55.3158, 59.4735, 77.6717



13.7225, 13.7066, 14.3090



17.9199, 9.2349, 0.9778



1.2476, 0.6423, 0.0967

Previews

White Background



This preview shows how the XYZ color 56.6527, 54.2353, 54.4962 looks on a white background.

Color Contrast Check

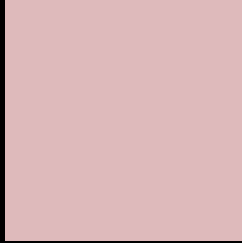
Large Text (above 18pt) WCAG AA × Fail

Any Text WCAG AA × Fail

Large Text (above 18pt) WCAG AAA × Fail

Any Text WCAG AAA × Fail

Black Background



This preview shows how the XYZ color 56.6527, 54.2353, 54.4962 looks on a black background.

Color Contrast Check

Large Text (above 18pt) WCAG AA ✓ Pass

Any Text WCAG AA ✓ Pass

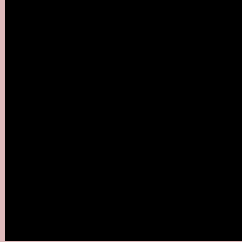
Large Text (above 18pt) WCAG AAA ✓ Pass

Any Text WCAG AAA ✓ Pass

If you want to check with other color combinations, try the [Color Contrast Checker](#).

XYZ 56.6527, 54.2353, 54.4962

Background



This preview shows how black text looks on a background with the XYZ color 56.6527, 54.2353, 54.4962.



This preview shows how white text looks on a background with the XYZ color 56.6527, 54.2353,

54.4962.

Color Blindness Simulation

Color vision deficiency is a very complex topic, and I could not describe the different causes any better than Wikipedia does, so if you want to learn more, you should check out their [article about color blindness](#).

Dichromacy



Original Color

56.6527, 54.2353, 54.4962

Protanopia

52.2489, 54.4873, 57.0535

Deuteranopia

55.2718, 54.1532, 54.5532



Tritanopia

57.8807, 54.0925, 61.4231

Trichromacy



Original Color

56.6527, 54.2353, 54.4962

Protanomaly

53.6572, 54.2447, 56.3574

Deuteranomaly

55.6534, 54.0339, 54.5100

Tritanomaly

57.6307, 54.3260, 59.0783

Monochromacy



Original Color

56.6527, 54.2353, 54.4962

Achromatopsia

53.0703, 55.8340, 60.8033

Achromatomaly

54.1492, 55.1120, 58.2358

CSS Examples

Text

The CSS property to change the color of the text to XYZ 56.6527, 54.2353, 54.4962 is called "color". The color property can be set on classes, ids or directly on the HTML element.

This example shows how text in the color `rgb(222, 186, 187)` looks like.

```
.text, #text, p{  
    color:rgb(222, 186, 187)  
}
```

If you want to add a text shadow in that color use the text-shadow property, you can generate a text shadow directly with our [CSS Text Shadow Generator](#).

Here you see how black text with a 4 pixel rgb(222, 186, 187) colored shadow looks like.

```
.shadow{ text-shadow: 4px 4px 2px rgb(222, 186, 187) }
```

Border

The CSS property to change the border of an element to XYZ 56.6527, 54.2353, 54.4962 is called "border". The border property can be set on classes, ids or directly on the HTML element.

This example shows the color as border, it can be applied via the CSS property "border" or "border-color".

```
.border, #border, table{ border:4px solid rgb(222, 186, 187) }
```


If only the border color should be changed use the property `border-color`.

```
.border{ border-color:rgb(222, 186, 187) }
```

If you want to add a box shadow in that color use:

Here you see how a box with a 4 pixel `rgb(222, 186, 187)` colored shadow looks like.

```
.boxshadow{ -moz-box-shadow:4px 4px 4px  
4px rgb(222, 186, 187); -webkit-box-  
shadow:4px 4px 4px 4px rgb(222, 186, 187);  
box-shadow:4px 4px 4px 4px rgb(222, 186,  
187) }
```

Background

The CSS property to change the background color of an element to XYZ 56.6527, 54.2353, 54.4962 is called "background". The background property can be set on classes, ids or directly on the HTML element.

```
.background, #background, body{  
background: rgb(222, 186, 187) }
```

If only the background color should be changed can be used:

```
.background{ background-color: rgb(222,  
186, 187) }
```

This example shows the color as background, it is applied via the CSS property "background".

To optimize and compress your CSS code, you can use our [online CSS compressor and optimizer](#) based on csstidy. If you want to create a linear or radial gradient as background or border, check our [CSS Gradient Generator](#).

Hey! You found this booklet interesting? Support Converting Colors with the new Membership Option!

The pro membership hides all ads, plus gives you double the colors in the color bucket, and more awesome pro features!

[Learn more, Memberships starting at \\$2.50/m!](#)

**Follow me
on Twitter!**

@ConvertingColor