

Converting Colors

XYZ(56.6727, 56.5723, 60.0941)

Have a look what the booklet for
XYZ(56.6727, 56.5723, 60.0941)
contains.

XYZ(56.6962, 56.7152, 60.1835)	3
<i>Conversions</i>	4
<i>Details</i>	6
<i>Harmonies</i>	12
<i>Previews</i>	24
<i>Color Blindness Simulation</i>	28
<i>CSS Examples</i>	31

Color

**XYZ(56.6962, 56.7152,
60.1835)**

Conversions

Conversions Part 1

Format	Color
Hex	D5C2C4
RGB	213, 194, 196
RGB Percent	84%, 76%, 77%
CMY	0.1647, 0.2392, 0.2314
CMYK	0.00, 0.09, 0.08, 0.16
HSL	354°, 18%, 80%
HSV	354°, 9%, 84%
XYZ	56.6962, 56.7152, 60.1835
YIQ	199.9090, 10.6820, 4.6500

Conversions

Conversions Part 2

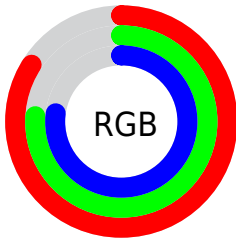
Format	Color
R _Y B	213, 194, 196
Decimal	14009028
CIE Lab	80.02, 7.02, 1.41
CIE LCh	80, 7.162, 11.393
Yxy	56.7152, 0.3266, 0.3267
Android (android.graphics.Color)	4292199108 (0xFFD5C2C4)
YUV	199.9090, -1.9271, 11.4808
Hunter-Lab	75.3095, 2.5908, 5.3351

Details

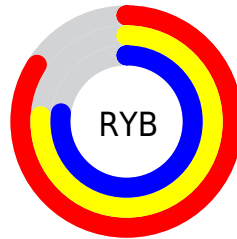
The XYZ color **56.6962, 56.7152, 60.1835** is a light color, and the websafe version is hex **CCCCCC**. A complement of this color would be **57.8024, 63.7625, 70.8920**, and the grayscale version is **54.8519, 57.7085, 62.8445**.

A 20% lighter version of the original color is **93.1552, 96.7231, 106.6881**, and **28.3611, 27.9783, 29.4967** is the 20% darker color. If you saturate the color by 10%, you get **50.2578, 47.0923, 48.0044**, and if you desaturate by 10%, it is **64.0930, 67.8123, 74.0434**.

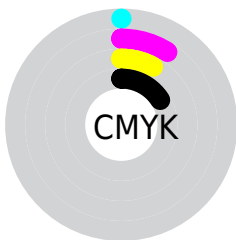
Distribution



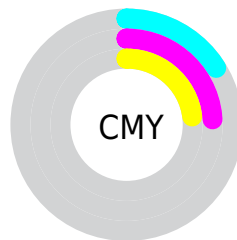
- Red (84%)
- Green (76%)
- Blue (77%)



- Red (84%)
- Yellow (76%)
- Blue (77%)



- Cyan (0%)
- Magenta (9%)
- Yellow (8%)
- Black (16%)



- Cyan (16%)
- Magenta (24%)
- Yellow (23%)

Brightness & Saturation Gradients

These gradients show how the XYZ color 56.6962, 56.7152, 60.1835 changes by changing the brightness by 10 percent. The first figure shows a shift by +10% for each color and the second figure -10%.

Similar to the brightness gradients but the following saturation gradients show a change of the XYZ color 56.6962, 56.7152, 60.1835 by changing the saturation by 10% instead.

■ 56.6962, 56.7152,
60.1835

■ 56.6962, 56.7152,
60.1835

402.3426,
412.3813, 443.0972

■ 41.0006, 40.7766,
43.1403

■ 99.1557, 100.0495,
106.6418

■ 28.5072, 28.1446,
29.6630

126.6503,
128.2140, 136.8940

■ 18.8507, 18.4347,
19.3331

158.8085,
161.2227, 172.3862

■ 11.6658, 11.2625,
11.7319

195.9958,
199.4598, 213.5370

■ 6.5871, 6.2437,
6.4411

238.5775,
243.3098, 260.7650

■ 3.2493, 2.9938,
3.0420

286.9190,

■ 1.2869, 1.1285,

293.1572, 314.4887

1.1161

341.3855,
349.3862, 375.1266

■ 0.1734, 0.0021,
0.0000

■ 0.0000, 0.0000,
0.0000

■ 56.6962, 56.7152,
60.1835

■ 56.6962, 56.7152,
60.1835

■ 50.2578, 47.0923,
48.0044

■ 64.0930, 67.8123,
74.0434

■ 44.7339, 38.8745,
37.4387

■ 72.4801, 80.4340,
89.6409

■ 40.0843, 31.9982,
28.4196

■ 80.9602, 92.7700,
106.7233

■ 36.2641, 26.3921,
20.8744

■ 81.2509, 92.8863,
108.2542

■ 33.2241, 21.9783,
14.7245

■ 30.9101, 18.6703,
9.8840

■ 29.2609, 16.3699,
6.2574

■ 28.2049, 14.9616,
3.7361

■ 27.6355, 14.2642,
2.1855

Harmonies

Analogous

The Analogous color harmony consists of three colors that are next to each other on the color wheel.



56.6020, 56.7152, 64.3459



56.6962, 56.7152, 60.1835



56.0328, 56.7152, 56.6040

Triad

The Triadic color harmony groups three colors that are evenly spaced from another and form a triangle on the color wheel.



56.6962, 56.7152, 60.1835



52.0768, 56.7152, 55.9338



53.0181, 56.7152, 69.6645

Complementary

The Complementary color scheme is a pair of colors which are on the opposite of each other on the color wheel.



56.6962, 56.7152, 60.1835



57.8024, 63.7625, 70.8920

Split Complementary

Split-complementary colors differ from the complementary color scheme. The scheme consists of three colors, the original color and two neighbors of the complement color.



51.8339, 56.7152, 67.2057



56.6962, 56.7152, 60.1835



51.2972, 56.7152, 59.2311

Square

The Square scheme is like the rectangle color scheme, but the four colors are evenly spaced on the color wheel.



56.6962, 56.7152, 60.1835



53.3552, 56.7152, 54.2251



51.2091, 56.7152, 63.3500



54.4608, 56.7152, 69.9477

Rectangle

The Rectangle color scheme consists of four colors that form a rectangle on the color wheel.



56.6962, 56.7152, 60.1835



55.2571, 56.7152, 54.9809



51.2091, 56.7152, 63.3500



52.5773, 56.7152, 69.0600

Sweetspot

The Sweet Spot groups the original color and five complimentary colors.



56.6978, 56.7177, 60.1847



91.5751, 94.7827, 102.4006



58.1057, 57.2071, 70.9312



19.4070, 19.9965, 21.5547



0.0000, 0.0000, 0.0000



20.3446, 21.4041, 23.3091

Same Dimension

The Same Dimension uses a secret algorithm to generate beautiful new colors.



56.6978, 56.7177, 60.1847



82.9640, 81.8783, 86.2192



58.1327, 59.9488, 59.5492



12.4758, 12.4418, 13.1797



16.8707, 8.6846, 1.3575



1.0360, 0.5312, 0.1788

Inverse Universe

The Inverse Universe completely reimagines the original color for something new.



56.6978, 56.7177, 60.1847



82.9640, 81.8783, 86.2192



56.2636, 60.2817, 71.6218



12.4758, 12.4418, 13.1797



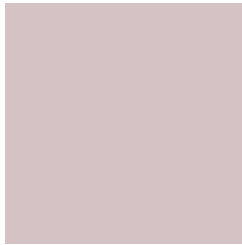
16.8707, 8.6846, 1.3575



1.0360, 0.5312, 0.1788

Previews

White Background



This preview shows how the XYZ color 56.6962, 56.7152, 60.1835 looks on a white background.

Color Contrast Check

Large Text (above 18pt) WCAG AA × Fail

Any Text WCAG AA × Fail

Large Text (above 18pt) WCAG AAA × Fail

Any Text WCAG AAA × Fail

Black Background



This preview shows how the XYZ color 56.6962, 56.7152, 60.1835 looks on a black background.

Color Contrast Check

Large Text (above 18pt) WCAG AA ✓ Pass

Any Text WCAG AA ✓ Pass

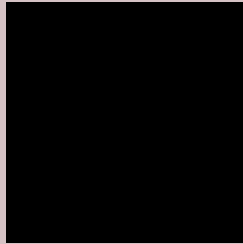
Large Text (above 18pt) WCAG AAA ✓ Pass

Any Text WCAG AAA ✓ Pass

If you want to check with other color combinations, try the [Color Contrast Checker](#).

XYZ 56.6962, 56.7152, 60.1835

Background



This preview shows how black text looks on a background with the XYZ color 56.6962, 56.7152, 60.1835.



This preview shows how white text looks on a background with the XYZ color 56.6962, 56.7152,

Color Blindness Simulation

Color vision deficiency is a very complex topic, and I could not describe the different causes any better than Wikipedia does, so if you want to learn more, you should check out their [article about color blindness](#).

Dichromacy



Original Color

56.6962, 56.7152, 60.1835

Protanopia

54.7442, 57.0219, 61.5471

Deuteranopia

57.7269, 56.5902, 60.1050



Tritanopia

58.1365, 56.6513, 66.9022

Trichromacy



Original Color

56.6962, 56.7152, 60.1835

Protanomaly

55.4979, 57.0855, 60.9169

Deuteranomaly

57.3527, 56.7244, 60.1506

Tritanomaly

57.5810, 56.7479, 64.4185

Monochromacy



Original Color

56.6962, 56.7152, 60.1835

Achromatopsia

54.8990, 57.7580, 62.8985

Achromatomaly

55.6797, 57.4908, 62.1950

CSS Examples

Text

The CSS property to change the color of the text to XYZ 56.6962, 56.7152, 60.1835 is called "color". The color property can be set on classes, ids or directly on the HTML element.

This example shows how text in the color `rgb(213, 194, 196)` looks like.

```
.text, #text, p{  
    color:rgb(213, 194, 196)  
}
```

If you want to add a text shadow in that color use the text-shadow property, you can generate a text shadow directly with our [CSS Text Shadow Generator](#).

Here you see how black text with a 4 pixel rgb(213, 194, 196) colored shadow looks like.

```
.shadow{ text-shadow: 4px 4px 2px rgb(213, 194, 196) }
```

Border

The CSS property to change the border of an element to XYZ 56.6962, 56.7152, 60.1835 is called "border". The border property can be set on classes, ids or directly on the HTML element.

This example shows the color as border, it can be applied via the CSS property "border" or "border-color".

```
.border, #border, table{ border:4px solid rgb(213, 194, 196) }
```


If only the border color should be changed use the property `border-color`.

```
.border{ border-color:rgb(213, 194, 196) }
```

If you want to add a box shadow in that color use:

Here you see how a box with a 4 pixel `rgb(213, 194, 196)` colored shadow looks like.

```
.boxshadow{ -moz-box-shadow:4px 4px 4px  
4px rgb(213, 194, 196); -webkit-box-  
shadow:4px 4px 4px 4px rgb(213, 194, 196);  
box-shadow:4px 4px 4px 4px rgb(213, 194,  
196) }
```

Background

The CSS property to change the background color of an element to XYZ 56.6962, 56.7152, 60.1835 is called "background". The background property can be set on classes, ids or directly on the HTML element.

```
.background, #background, body{  
background: rgb(213, 194, 196) }
```

If only the background color should be changed can be used:

```
.background{ background-color: rgb(213,  
194, 196) }
```

This example shows the color as background, it is applied via the CSS property "background".

To optimize and compress your CSS code, you can use our [online CSS compressor and optimizer](#) based on csstidy. If you want to create a linear or radial gradient as background or border, check our [CSS Gradient Generator](#).

Hey! You found this booklet interesting? Support Converting Colors with the new Membership Option!

The pro membership hides all ads, plus gives you double the colors in the color bucket, and more awesome pro features!

[Learn more, Memberships starting at \\$2.50/m!](#)

**Follow me
on Twitter!**

@ConvertingColor