

Converting Colors

XYZ(56.7822, 56.9394, 59.3216)

Have a look what the booklet for
XYZ(56.7822, 56.9394, 59.3216)
contains.

XYZ(56.7609, 56.7748, 59.0059)	3
<i>Conversions</i>	4
<i>Details</i>	6
<i>Harmonies</i>	12
<i>Previews</i>	24
<i>Color Blindness Simulation</i>	28
<i>CSS Examples</i>	31

Color

**XYZ(56.7609, 56.7748,
59.0059)**

Conversions

Conversions Part 1

Format	Color
Hex	D6C2C2
RGB	214, 194, 194
RGB Percent	84%, 76%, 76%
CMY	0.1608, 0.2392, 0.2392
CMYK	0.00, 0.09, 0.09, 0.16
HSL	0°, 20%, 80%
HSV	0°, 9%, 84%
XYZ	56.7609, 56.7748, 59.0059
YIQ	199.9800, 11.9200, 4.2400

Conversions

Conversions Part 2

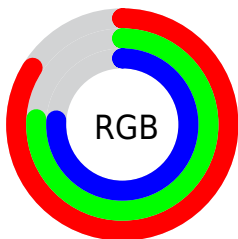
Format	Color
R _Y B	214, 194, 194
Decimal	14074562
CIE Lab	80.05, 7.04, 2.55
CIE LCh	80, 7.484, 19.924
Yxy	56.7748, 0.3290, 0.3290
Android (android.graphics.Color)	4292264642 (0xFFD6C2C2)
YUV	199.9800, -2.9481, 12.2955
Hunter-Lab	75.3491, 2.6043, 6.3143

Details

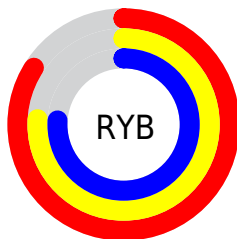
The XYZ color **56.7609, 56.7748, 59.0059** is a light color, and the websafe version is hex **CCCCCC**. A complement of this color would be **58.4319, 64.4160, 72.9726**, and the grayscale version is **54.9012, 57.7603, 62.9010**.

A 20% lighter version of the original color is **92.6809, 96.5333, 104.1905**, and **28.4098, 28.0205, 28.7221** is the 20% darker color. If you saturate the color by 10%, you get **50.1049, 47.0356, 45.7711**, and if you desaturate by 10%, it is **64.4519, 68.0286, 74.2946**.

Distribution



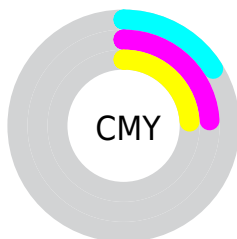
- Red (84%)
- Green (76%)
- Blue (76%)



- Red (84%)
- Yellow (76%)
- Blue (76%)



- Cyan (0%)
- Magenta (9%)
- Yellow (9%)
- Black (16%)



- Cyan (16%)
- Magenta (24%)
- Yellow (24%)

Brightness & Saturation Gradients

These gradients show how the XYZ color 56.7609, 56.7748, 59.0059 changes by changing the brightness by 10 percent. The first figure shows a shift by +10% for each color and the second figure -10%.

Similar to the brightness gradients but the following saturation gradients show a change of the XYZ color 56.7609, 56.7748, 59.0059 by changing the saturation by 10% instead.

■ 56.7609, 56.7748,
59.0059

■ 56.7609, 56.7748,
59.0059

402.5814,
412.6049, 438.6263

■ 41.0527, 40.8245,
42.1978

■ 99.2496, 100.1365,
104.9154

■ 28.5481, 28.1819,
28.9295

126.7608,
128.3167, 134.8540

■ 18.8818, 18.4629,
18.7824

158.9371,
161.3423, 170.0065

■ 11.6884, 11.2828,
11.3379

196.1437,
199.5976, 210.7914

■ 6.6026, 6.2574,
6.1776

238.7461,
243.4672, 257.6273

■ 3.2589, 3.0022,
2.8828

287.1096,

■ 1.2921, 1.1329,

293.3353, 310.9327

1.0351

341.5996,
349.5864, 371.1262

■ 0.1773, 0.0058,
0.0000

■ 0.0000, 0.0000,
0.0000

■ 56.7609, 56.7748,
59.0059

■ 56.7609, 56.7748,
59.0059

■ 50.1049, 47.0356,
45.7711

■ 64.4519, 68.0286,
74.2946

■ 44.4351, 38.7393,
34.4993

■ 73.2142, 80.8499,
91.7155

■ 39.7061, 31.8195,
25.0982

■ 81.5418, 93.0362,
108.2678

■ 35.8672, 26.2020,
17.4666

■ 32.8625, 21.8051,
11.4938

■ 30.6301, 18.5383,
7.0566

■ 29.0996, 16.2985,
4.0149

■ 28.1876, 14.9637,
2.2028

■ 27.7551, 14.3307,
1.3435

Harmonies

Analogous

The Analogous color harmony consists of three colors that are next to each other on the color wheel.



56.8955, 56.7748, 63.2959



56.7609, 56.7748, 59.0059



55.8687, 56.7748, 55.6244

Triad

The Triadic color harmony groups three colors that are evenly spaced from another and form a triangle on the color wheel.



56.7609, 56.7748, 59.0059



51.7544, 56.7748, 56.5781



53.4524, 56.7748, 70.4421

Complementary

The Complementary color scheme is a pair of colors which are on the opposite of each other on the color wheel.



56.7609, 56.7748, 59.0059



58.4319, 64.4160, 72.9726

Split Complementary

Split-complementary colors differ from the complementary color scheme. The scheme consists of three colors, the original color and two neighbors of the complement color.



52.1006, 56.7748, 68.4553



56.7609, 56.7748, 59.0059



51.1326, 56.7748, 60.3635

Square

The Square scheme is like the rectangle color scheme, but the four colors are evenly spaced on the color wheel.



56.7609, 56.7748, 59.0059



52.9717, 56.7748, 54.2691



51.2581, 56.7748, 64.7183



54.9661, 56.7748, 70.0366

Rectangle

The Rectangle color scheme consists of four colors that form a rectangle on the color wheel.



56.7609, 56.7748, 59.0059



54.9735, 56.7748, 54.2760



51.2581, 56.7748, 64.7183



52.9645, 56.7748, 70.0284

Sweetspot

The Sweet Spot groups the original color and five complimentary colors.



56.7625, 56.7773, 59.0071



91.4510, 94.7338, 101.7446



59.1615, 57.7355, 71.6447



19.3736, 19.9834, 21.3786



0.0000, 0.0000, 0.0000



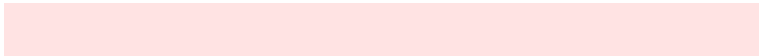
20.3446, 21.4041, 23.3091

Same Dimension

The Same Dimension uses a secret algorithm to generate beautiful new colors.



56.7625, 56.7773, 59.0071



82.5552, 81.7172, 84.0587



59.0626, 61.3776, 59.7738



12.4235, 12.4212, 12.9035



16.7623, 8.6418, 0.7846



1.0111, 0.5214, 0.0473

Inverse Universe

The Inverse Universe completely reimagines the original color for something new.



58.4319, 64.4160, 72.9726



85.4710, 95.0591, 108.4512



55.9793, 59.5108, 72.1551



12.7920, 14.1074, 15.9863



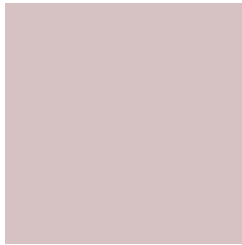
21.8645, 31.9907, 43.4756



1.3188, 1.9297, 2.6223

Previews

White Background



This preview shows how the XYZ color 56.7609, 56.7748, 59.0059 looks on a white background.

Color Contrast Check

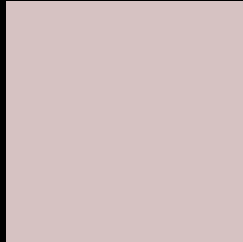
Large Text (above 18pt) WCAG AA × Fail

Any Text WCAG AA × Fail

Large Text (above 18pt) WCAG AAA × Fail

Any Text WCAG AAA × Fail

Black Background



This preview shows how the XYZ color 56.7609, 56.7748, 59.0059 looks on a black background.

Color Contrast Check

Large Text (above 18pt) WCAG AA ✓ Pass

Any Text WCAG AA ✓ Pass

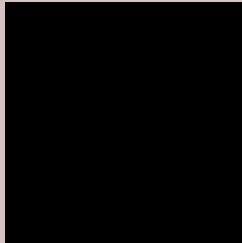
Large Text (above 18pt) WCAG AAA ✓ Pass

Any Text WCAG AAA ✓ Pass

If you want to check with other color combinations, try the [Color Contrast Checker](#).

XYZ 56.7609, 56.7748, 59.0059

Background



This preview shows how black text looks on a background with the XYZ color 56.7609, 56.7748, 59.0059.



This preview shows how white text looks on a background with the XYZ color 56.7609, 56.7748,

Color Blindness Simulation

Color vision deficiency is a very complex topic, and I could not describe the different causes any better than Wikipedia does, so if you want to learn more, you should check out their [article about color blindness](#).

Dichromacy



Original Color

56.7609, 56.7748, 59.0059

Protanopia

54.7865, 57.0702, 60.3526

Deuteranopia

57.8007, 56.6544, 58.9279



Tritanopia

58.4310, 56.8032, 66.9160

Trichromacy



Original Color

56.7609, 56.7748, 59.0059

Protanomaly

55.5487, 57.1380, 59.7308

Deuteranomaly

57.4228, 56.7867, 58.9734

Tritanomaly

57.7550, 56.8513, 63.8065

Monochromacy



Original Color

56.7609, 56.7748, 59.0059

Achromatopsia

54.8990, 57.7580, 62.8985

Achromatomaly

55.5640, 57.4445, 61.5854

CSS Examples

Text

The CSS property to change the color of the text to XYZ 56.7609, 56.7748, 59.0059 is called "color". The color property can be set on classes, ids or directly on the HTML element.

This example shows how text in the color rgb(214, 194, 194) looks like.

```
.text, #text, p{  
    color:rgb(214, 194, 194)  
}
```

If you want to add a text shadow in that color use the text-shadow property, you can generate a text shadow directly with our [CSS Text Shadow Generator](#).

Here you see how black text with a 4 pixel rgb(214, 194, 194) colored shadow looks like.

```
.shadow{ text-shadow: 4px 4px 2px rgb(214, 194, 194) }
```

Border

The CSS property to change the border of an element to XYZ 56.7609, 56.7748, 59.0059 is called "border". The border property can be set on classes, ids or directly on the HTML element.

This example shows the color as border, it can be applied via the CSS property "border" or "border-color".

```
.border, #border, table{ border:4px solid rgb(214, 194, 194) }
```


If only the border color should be changed use the property `border-color`.

```
.border{ border-color:rgb(214, 194, 194) }
```

If you want to add a box shadow in that color use:

Here you see how a box with a 4 pixel `rgb(214, 194, 194)` colored shadow looks like.

```
.boxshadow{ -moz-box-shadow:4px 4px 4px  
4px rgb(214, 194, 194); -webkit-box-  
shadow:4px 4px 4px 4px rgb(214, 194, 194);  
box-shadow:4px 4px 4px 4px rgb(214, 194,  
194) }
```

Background

The CSS property to change the background color of an element to XYZ 56.7609, 56.7748, 59.0059 is called "background". The background property can be set on classes, ids or directly on the HTML element.

```
.background, #background, body{  
background: rgb(214, 194, 194) }
```

If only the background color should be changed can be used:

```
.background{ background-color: rgb(214,  
194, 194) }
```

This example shows the color as background, it is applied via the CSS property "background".

To optimize and compress your CSS code, you can use our [online CSS compressor and optimizer](#) based on csstidy. If you want to create a linear or radial gradient as background or border, check our [CSS Gradient Generator](#).

Hey! You found this booklet interesting? Support Converting Colors with the new Membership Option!

The pro membership hides all ads, plus gives you double the colors in the color bucket, and more awesome pro features!

[Learn more, Memberships starting at \\$2.50/m!](#)

**Follow me
on Twitter!**

@ConvertingColor