

Converting Colors

XYZ(56.8109, 56.1463, 58.3617)

Have a look what the booklet for
XYZ(56.8109, 56.1463, 58.3617)
contains.

XYZ(56.7942, 56.1485, 58.2964)	3
<i>Conversions</i>	4
<i>Details</i>	6
<i>Harmonies</i>	12
<i>Previews</i>	24
<i>Color Blindness Simulation</i>	28
<i>CSS Examples</i>	31

Color

**XYZ(56.7942, 56.1485,
58.2964)**

Conversions

Conversions Part 1

Format	Color
Hex	D8C0C1
RGB	216, 192, 193
RGB Percent	85%, 75%, 76%
CMY	0.1529, 0.2470, 0.2431
CMYK	0.00, 0.11, 0.11, 0.15
HSL	358°, 24%, 80%
HSV	358°, 11%, 85%
XYZ	56.7942, 56.1485, 58.2964
YIQ	199.2900, 13.9830, 5.3990

Conversions

Conversions Part 2

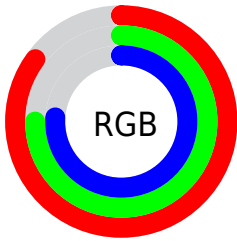
Format	Color
R _{YB}	216, 192, 193
Decimal	14205121
CIE Lab	79.70, 8.65, 2.60
CIE LCh	80, 9.027, 16.708
Yxy	56.1485, 0.3317, 0.3279
Android (android.graphics.Color)	4292395201 (0xFFD8C0C1)
YUV	199.2900, -3.1010, 14.6547
Hunter-Lab	74.9323, 4.1608, 6.3257

Details

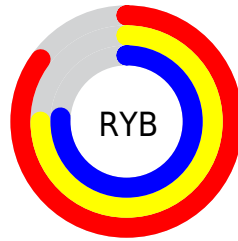
The XYZ color **56.7942, 56.1485, 58.2964** is a light color, and the websafe version is hex **CCCCCC**. A complement of this color would be **58.5621, 65.2259, 73.7966**, and the grayscale version is **54.4774, 57.3144, 62.4154**.

A 20% lighter version of the original color is **91.9063, 95.2344, 103.1606**, and **28.6642, 27.9358, 28.6923** is the 20% darker color. If you saturate the color by 10%, you get **50.2450, 46.4907, 45.5052**, and if you desaturate by 10%, it is **64.3659, 67.3327, 73.0249**.

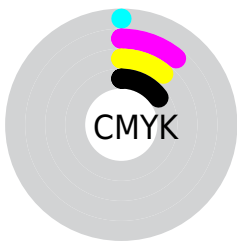
Distribution



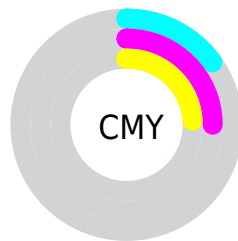
- Red (85%)
- Green (75%)
- Blue (76%)



- Red (85%)
- Yellow (75%)
- Blue (76%)



- Cyan (0%)
- Magenta (11%)
- Yellow (11%)
- Black (15%)



- Cyan (15%)
- Magenta (25%)
- Yellow (24%)

Brightness & Saturation Gradients

These gradients show how the XYZ color 56.7942, 56.1485, 58.2964 changes by changing the brightness by 10 percent. The first figure shows a shift by +10% for each color and the second figure -10%.

Similar to the brightness gradients but the following saturation gradients show a change of the XYZ color 56.7942, 56.1485, 58.2964 by changing the saturation by 10% instead.

■ 56.7942, 56.1485,
58.2964

■ 56.7942, 56.1485,
58.2964

402.7044,
410.2509, 435.9185

■ 41.0795, 40.3220,
41.6307

■ 99.2979, 99.2217,
103.8734

■ 28.5692, 27.7897,
28.4888

126.8177,
127.2371, 133.6218

■ 18.8978, 18.1672,
18.4522

159.0032,
160.0843, 168.5681

■ 11.7000, 11.0701,
11.1024

196.2198,
198.1477, 209.1310

■ 6.6105, 6.1140,
6.0207

238.8329,
241.8117, 255.7290

■ 3.2639, 2.9145,
2.7887

287.2078,

■ 1.2948, 1.0873,

291.4606, 308.7805

0.9878

341.7098,
347.4789, 368.7042

■ 0.1793, 0.0000,
0.0000

■ 0.0000, 0.0000,
0.0000

■ 56.7942, 56.1485,
58.2964

■ 56.7942, 56.1485,
58.2964

■ 50.2450, 46.4907,
45.5052

■ 64.3659, 67.3327,
73.0249

■ 44.6701, 38.2861,
34.5674

■ 72.9964, 80.0975,
89.7629

■ 40.0244, 31.4666,
25.3981

■ 82.1292, 93.3391,
108.2953

■ 36.2573, 25.9558,
17.9043

■ 33.3134, 21.6699,
11.9849

■ 31.1313, 18.5155,
7.5275

■ 29.6405, 16.3855,
4.4051

■ 28.7577, 15.1526,
2.4687

■ 28.3683, 14.6187,
1.5840

Harmonies

Analogous

The Analogous color harmony consists of three colors that are next to each other on the color wheel.



56.8506, 56.1485, 63.4724



56.7942, 56.1485, 58.2964



55.8063, 56.1485, 54.1192

Triad

The Triadic color harmony groups three colors that are evenly spaced from another and form a triangle on the color wheel.



56.7942, 56.1485, 58.2964



50.8576, 56.1485, 54.5101



52.5659, 56.1485, 71.4313

Complementary

The Complementary color scheme is a pair of colors which are on the opposite of each other on the color wheel.



56.7942, 56.1485, 58.2964



58.5621, 65.2259, 73.7966

Split Complementary

Split-complementary colors differ from the complementary color scheme. The scheme consists of three colors, the original color and two neighbors of the complement color.



51.0007, 56.1485, 68.7348



56.7942, 56.1485, 58.2964



50.0296, 56.1485, 58.8580

Square

The Square scheme is like the rectangle color scheme, but the four colors are evenly spaced on the color wheel.



56.7942, 56.1485, 58.2964



52.3665, 56.1485, 52.0200



50.0814, 56.1485, 64.0667



54.3811, 56.1485, 71.2597

Rectangle

The Rectangle color scheme consists of four colors that form a rectangle on the color wheel.



56.7942, 56.1485, 58.2964



54.7650, 56.1485, 52.3747



50.0814, 56.1485, 64.0667



51.9939, 56.1485, 70.8240

Sweetspot

The Sweet Spot groups the original color and five complimentary colors.



56.7958, 56.1510, 58.2976



91.4996, 94.7525, 102.0033



59.2116, 57.0765, 72.8625



19.3867, 19.9884, 21.4480



0.0000, 0.0000, 0.0000



20.3446, 21.4041, 23.3091

Same Dimension

The Same Dimension uses a secret algorithm to generate beautiful new colors.



56.7958, 56.1510, 58.2976



80.6712, 78.7628, 80.9228



59.1437, 61.0241, 58.5339



12.4439, 12.4291, 13.0120



16.8008, 8.6566, 0.9890



1.0209, 0.5251, 0.0992

Inverse Universe

The Inverse Universe completely reimagines the original color for something new.



56.7958, 56.1510, 58.2976



80.6712, 78.7628, 80.9228



56.0143, 59.9249, 73.5808



12.4439, 12.4291, 13.0120



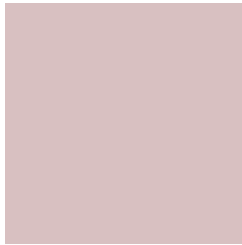
16.8008, 8.6566, 0.9890



1.0209, 0.5251, 0.0992

Previews

White Background



This preview shows how the XYZ color 56.7942, 56.1485, 58.2964 looks on a white background.

Color Contrast Check

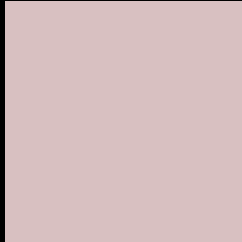
Large Text (above 18pt) WCAG AA × Fail

Any Text WCAG AA × Fail

Large Text (above 18pt) WCAG AAA × Fail

Any Text WCAG AAA × Fail

Black Background



This preview shows how the XYZ color 56.7942, 56.1485, 58.2964 looks on a black background.

Color Contrast Check

Large Text (above 18pt) WCAG AA ✓ Pass

Any Text WCAG AA ✓ Pass

Large Text (above 18pt) WCAG AAA ✓ Pass

Any Text WCAG AAA ✓ Pass

If you want to check with other color combinations, try the [Color Contrast Checker](#).

XYZ 56.7942, 56.1485, 58.2964

Background



This preview shows how black text looks on a background with the XYZ color 56.7942, 56.1485, 58.2964.



This preview shows how white text looks on a background with the XYZ color 56.7942, 56.1485,

Color Blindness Simulation

Color vision deficiency is a very complex topic, and I could not describe the different causes any better than Wikipedia does, so if you want to learn more, you should check out their [article about color blindness](#).

Dichromacy



Original Color

56.7942, 56.1485, 58.2964

Protanopia

54.0175, 56.3355, 60.2514

Deuteranopia

57.1699, 56.0173, 58.2513



Tritanopia

58.3463, 56.1401, 65.5185

Trichromacy



Original Color

56.7942, 56.1485, 58.2964

Protanomaly

54.8190, 56.0922, 59.5674

Deuteranomaly

56.8717, 55.8636, 58.2374

Tritanomaly

57.7887, 56.2304, 63.0661

Monochromacy



Original Color

56.7942, 56.1485, 58.2964

Achromatopsia

54.2854, 57.1125, 62.1955

Achromatomaly

54.9948, 56.4902, 60.8285

CSS Examples

Text

The CSS property to change the color of the text to XYZ 56.7942, 56.1485, 58.2964 is called "color". The color property can be set on classes, ids or directly on the HTML element.

This example shows how text in the color `rgb(216, 192, 193)` looks like.

```
.text, #text, p{  
    color:rgb(216, 192, 193)  
}
```

If you want to add a text shadow in that color use the text-shadow property, you can generate a text shadow directly with our [CSS Text Shadow Generator](#).

Here you see how black text with a 4 pixel rgb(216, 192, 193) colored shadow looks like.

```
.shadow{ text-shadow: 4px 4px 2px rgb(216, 192, 193) }
```

Border

The CSS property to change the border of an element to XYZ 56.7942, 56.1485, 58.2964 is called "border". The border property can be set on classes, ids or directly on the HTML element.

This example shows the color as border, it can be applied via the CSS property "border" or "border-color".

```
.border, #border, table{ border:4px solid rgb(216, 192, 193) }
```


If only the border color should be changed use the property `border-color`.

```
.border{ border-color:rgb(216, 192, 193) }
```

If you want to add a box shadow in that color use:

Here you see how a box with a 4 pixel `rgb(216, 192, 193)` colored shadow looks like.

```
.boxshadow{ -moz-box-shadow:4px 4px 4px  
4px rgb(216, 192, 193); -webkit-box-  
shadow:4px 4px 4px 4px rgb(216, 192, 193);  
box-shadow:4px 4px 4px 4px rgb(216, 192,  
193) }
```

Background

The CSS property to change the background color of an element to XYZ 56.7942, 56.1485, 58.2964 is called "background". The background property can be set on classes, ids or directly on the HTML element.

```
.background, #background, body{  
background: rgb(216, 192, 193) }
```

If only the background color should be changed can be used:

```
.background{ background-color: rgb(216,  
192, 193) }
```

This example shows the color as background, it is applied via the CSS property "background".

To optimize and compress your CSS code, you can use our [online CSS compressor and optimizer](#) based on csstidy. If you want to create a linear or radial gradient as background or border, check our [CSS Gradient Generator](#).

Hey! You found this booklet interesting? Support Converting Colors with the new Membership Option!

The pro membership hides all ads, plus gives you double the colors in the color bucket, and more awesome pro features!

[Learn more, Memberships starting at \\$2.50/m!](#)

**Follow me
on Twitter!**

@ConvertingColor