

Converting Colors

XYZ(56.8271, 54.3735, 59.8678)

Have a look what the booklet for
XYZ(56.8271, 54.3735, 59.8678)
contains.

XYZ(56.9475, 54.5862, 59.7593)	3
<i>Conversions</i>	4
<i>Details</i>	6
<i>Harmonies</i>	12
<i>Previews</i>	24
<i>Color Blindness Simulation</i>	28
<i>CSS Examples</i>	31

Color

**XYZ(56.9475, 54.5862,
59.7593)**

Conversions

Conversions Part 1

Format	Color
Hex	DBBBC4
RGB	219, 187, 196
RGB Percent	86%, 73%, 77%
CMY	0.1412, 0.2666, 0.2314
CMYK	0.00, 0.15, 0.11, 0.14
HSL	343°, 31%, 80%
HSV	343°, 15%, 86%
XYZ	56.9475, 54.5862, 59.7593
YIQ	197.5940, 16.1830, 9.5830

Conversions

Conversions Part 2

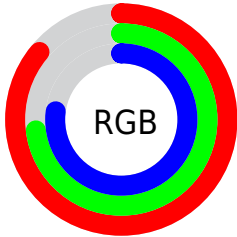
Format	Color
R _Y B	219, 187, 196
Decimal	14400452
CIE Lab	78.80, 12.89, -0.30
CIE LCh	79, 12.890, 358.681
Yxy	54.5862, 0.3325, 0.3187
Android (android.graphics.Color)	4292590532 (0xFFDDBBC4)
YUV	197.5940, -0.7858, 18.7731
Hunter-Lab	73.8825, 8.2908, 3.7614

Details

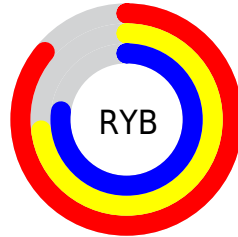
The XYZ color **56.9475, 54.5862, 59.7593** is a light color, and the websafe version is hex **FFCCCC**. A complement of this color would be **57.4600, 65.8823, 70.6639**, and the grayscale version is **53.4291, 56.2116, 61.2145**.

A 20% lighter version of the original color is **91.0202, 92.4530, 105.9764**, and **28.7174, 26.8957, 29.2690** is the 20% darker color. If you saturate the color by 10%, you get **50.9524, 45.3142, 49.3794**, and if you desaturate by 10%, it is **63.8423, 65.3552, 71.3680**.

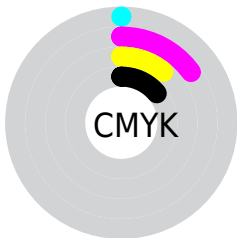
Distribution



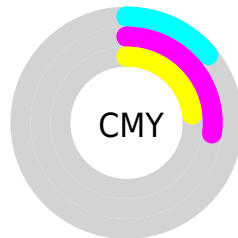
- Red (86%)
- Green (73%)
- Blue (77%)



- Red (86%)
- Yellow (73%)
- Blue (77%)



- Cyan (0%)
- Magenta (15%)
- Yellow (11%)
- Black (14%)



- Cyan (14%)
- Magenta (27%)
- Yellow (23%)

Brightness & Saturation Gradients


These gradients show how the XYZ color 56.9475, 54.5862, 59.7593 changes by changing the brightness by 10 percent. The first figure shows a shift by +10% for each color and the second figure -10%.


Similar to the brightness gradients but the following saturation gradients show a change of the XYZ color 56.9475, 54.5862, 59.7593 by changing the saturation by 10% instead.

 56.9475, 54.5862,
59.7593

 56.9475, 54.5862,
59.7593


403.2699,
404.3414, 441.4900

 41.2031, 39.0705,
42.8006


 99.5204, 96.9344,
106.0204

 28.6662, 26.8146,
29.3985


127.0795,
124.5357, 136.1599

 18.9714, 17.4340,
19.1343


159.3076,
156.9344, 171.5300

 11.7535, 10.5444,
11.5896

196.5701,
194.5148, 212.5494

 6.6471, 5.7614,
6.3457

239.2321,
237.6613, 259.6365

 3.2867, 2.7005,
2.9843

287.6592,

 1.3071, 0.9775,

286.7583, 313.2100

1.0866

342.2167,
342.1902, 373.6883

■ 0.1886, 0.0000,
0.0000

■ 0.0000, 0.0000,
0.0000

■ 56.9475, 54.5862,
59.7593

■ 56.9475, 54.5862,
59.7593

■ 50.9524, 45.3142,
49.3794

■ 63.8423, 65.3552,
71.3680

■ 45.8145, 37.4658,
40.1839

■ 71.6675, 77.6761,
84.2411

■ 41.4949, 30.9719,
32.1303

■ 80.4583, 91.6098,
98.4171

■ 37.9498, 25.7551,
25.1727

■ 83.0237, 93.8002,
108.3372

■ 35.1309, 21.7300,
19.2615

■ 32.9846, 18.8007,
14.3432

■ 31.4491, 16.8562,
10.3587

■ 30.4502, 15.7614,
7.2419

■ 30.0716, 15.4034,
5.8849

Harmonies

Analogous

The Analogous color harmony consists of three colors that are next to each other on the color wheel.



56.1910, 54.5862, 67.0479



56.9475, 54.5862, 59.7593



56.3103, 54.5862, 52.9387

Triad

The Triadic color harmony groups three colors that are evenly spaced from another and form a triangle on the color wheel.



56.9475, 54.5862, 59.7593



49.5616, 54.5862, 47.9328



49.3720, 54.5862, 72.2750

Complementary

The Complementary color scheme is a pair of colors which are on the opposite of each other on the color wheel.



56.9475, 54.5862, 59.7593



57.4600, 65.8823, 70.6639

Split Complementary

Split-complementary colors differ from the complementary color scheme. The scheme consists of three colors, the original color and two neighbors of the complement color.



47.6932, 54.5862, 66.4423



56.9475, 54.5862, 59.7593



47.8001, 54.5862, 52.4215

Square

The Square scheme is like the rectangle color scheme, but the four colors are evenly spaced on the color wheel.



56.9475, 54.5862, 59.7593



51.9956, 54.5862, 46.4566



47.1272, 54.5862, 59.1121



51.7696, 54.5862, 74.6302

Rectangle

The Rectangle color scheme consists of four colors that form a rectangle on the color wheel.



56.9475, 54.5862, 59.7593



55.1922, 54.5862, 49.4875



47.1272, 54.5862, 59.1121



48.7079, 54.5862, 70.6337

Sweetspot

The Sweet Spot groups the original color and five complimentary colors.



56.9490, 54.5886, 59.7605



90.7237, 93.2006, 101.7449



57.1177, 54.3495, 74.4985



19.2496, 19.6837, 21.4966



0.0000, 0.0000, 0.0000



20.3446, 21.4041, 23.3091

Same Dimension

The Same Dimension uses a secret algorithm to generate beautiful new colors.



56.9490, 54.5886, 59.7605



77.2506, 72.1842, 78.9726



57.4618, 57.2041, 55.0295



13.2058, 13.1114, 14.3449



17.8714, 9.1496, 3.7028



1.1943, 0.6073, 0.4319

Inverse Universe

The Inverse Universe completely reimagines the original color for something new.



56.9490, 54.5886, 59.7605



77.2506, 72.1842, 78.9726



56.8417, 62.8012, 76.1444



13.2058, 13.1114, 14.3449



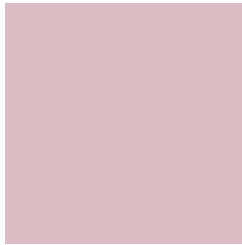
17.8714, 9.1496, 3.7028



1.1943, 0.6073, 0.4319

Previews

White Background



This preview shows how the XYZ color 56.9475, 54.5862, 59.7593 looks on a white background.

Color Contrast Check

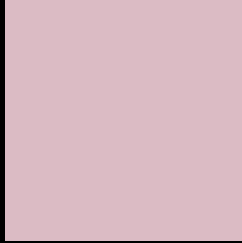
Large Text (above 18pt) WCAG AA × Fail

Any Text WCAG AA × Fail

Large Text (above 18pt) WCAG AAA × Fail

Any Text WCAG AAA × Fail

Black Background



This preview shows how the XYZ color 56.9475, 54.5862, 59.7593 looks on a black background.

Color Contrast Check

Large Text (above 18pt) WCAG AA ✓ Pass

Any Text WCAG AA ✓ Pass

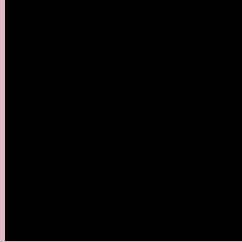
Large Text (above 18pt) WCAG AAA ✓ Pass

Any Text WCAG AAA ✓ Pass

If you want to check with other color combinations, try the [Color Contrast Checker](#).

XYZ 56.9475, 54.5862, 59.7593

Background



This preview shows how black text looks on a background with the XYZ color 56.9475, 54.5862, 59.7593.



This preview shows how white text looks on a background with the XYZ color 56.9475, 54.5862,

Color Blindness Simulation

Color vision deficiency is a very complex topic, and I could not describe the different causes any better than Wikipedia does, so if you want to learn more, you should check out their [article about color blindness](#).

Dichromacy



Original Color

56.9475, 54.5862, 59.7593

Protanopia

52.7431, 54.6240, 62.4072

Deuteranopia

55.8930, 54.6769, 59.8324



Tritanopia

57.6167, 54.5505, 62.7509

Trichromacy



Original Color

56.9475, 54.5862, 59.7593

Protanomaly

54.1164, 54.3643, 61.6739

Deuteranomaly

56.2659, 54.5509, 59.7884

Tritanomaly

57.3829, 54.4570, 61.5197

Monochromacy



Original Color

56.9475, 54.5862, 59.7593

Achromatopsia

53.6758, 56.4712, 61.4971

Achromatomaly

54.8234, 55.7366, 60.6921

CSS Examples

Text

The CSS property to change the color of the text to XYZ 56.9475, 54.5862, 59.7593 is called "color". The color property can be set on classes, ids or directly on the HTML element.

This example shows how text in the color `rgb(219, 187, 196)` looks like.

```
.text, #text, p{  
    color:rgb(219, 187, 196)  
}
```

If you want to add a text shadow in that color use the text-shadow property, you can generate a text shadow directly with our [CSS Text Shadow Generator](#).

Here you see how black text with a 4 pixel rgb(219, 187, 196) colored shadow looks like.

```
.shadow{ text-shadow: 4px 4px 2px rgb(219, 187, 196) }
```

Border

The CSS property to change the border of an element to XYZ 56.9475, 54.5862, 59.7593 is called "border". The border property can be set on classes, ids or directly on the HTML element.

This example shows the color as border, it can be applied via the CSS property "border" or "border-color".

```
.border, #border, table{ border:4px solid rgb(219, 187, 196) }
```


If only the border color should be changed use the property `border-color`.

```
.border{ border-color:rgb(219, 187, 196) }
```

If you want to add a box shadow in that color use:

Here you see how a box with a 4 pixel `rgb(219, 187, 196)` colored shadow looks like.

```
.boxshadow{ -moz-box-shadow:4px 4px 4px  
4px rgb(219, 187, 196); -webkit-box-  
shadow:4px 4px 4px 4px rgb(219, 187, 196);  
box-shadow:4px 4px 4px 4px rgb(219, 187,  
196) }
```

Background

The CSS property to change the background color of an element to XYZ 56.9475, 54.5862, 59.7593 is called "background". The background property can be set on classes, ids or directly on the HTML element.

```
.background, #background, body{  
background: rgb(219, 187, 196) }
```

If only the background color should be changed can be used:

```
.background{ background-color: rgb(219,  
187, 196) }
```

This example shows the color as background, it is applied via the CSS property "background".

To optimize and compress your CSS code, you can use our [online CSS compressor and optimizer](#) based on csstidy. If you want to create a linear or radial gradient as background or border, check our [CSS Gradient Generator](#).

Hey! You found this booklet interesting? Support Converting Colors with the new Membership Option!

The pro membership hides all ads, plus gives you double the colors in the color bucket, and more awesome pro features!

[Learn more, Memberships starting at \\$2.50/m!](#)

**Follow me
on Twitter!**

@ConvertingColor