

Converting Colors

XYZ(56.8652, 54.6232, 56.1660)

Have a look what the booklet for
XYZ(56.8652, 54.6232, 56.1660)
contains.

XYZ(56.8834, 54.6305, 56.2619)	3
<i>Conversions</i>	4
<i>Details</i>	6
<i>Harmonies</i>	12
<i>Previews</i>	24
<i>Color Blindness Simulation</i>	28
<i>CSS Examples</i>	31

Color

**XYZ(56.8834, 54.6305,
56.2619)**

Conversions

Conversions Part 1

Format	Color
Hex	DDBBBE
RGB	221, 187, 190
RGB Percent	87%, 73%, 75%
CMY	0.1333, 0.2666, 0.2549
CMYK	0.00, 0.15, 0.14, 0.13
HSL	355°, 33%, 80%
HSV	355°, 15%, 87%
XYZ	56.8834, 54.6305, 56.2619
YIQ	197.5080, 19.3010, 8.1410

Conversions

Conversions Part 2

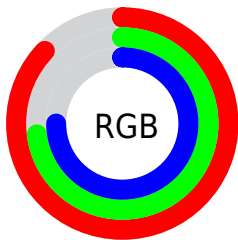
Format	Color
R _Y B	221, 187, 190
Decimal	14531518
CIE Lab	78.83, 12.62, 3.01
CIE LCh	79, 12.971, 13.402
Yxy	54.6305, 0.3390, 0.3256
Android (android.graphics.Color)	4292721598 (0xFFDDBBBE)
YUV	197.5080, -3.7014, 20.6025
Hunter-Lab	73.9124, 8.0277, 6.6074

Details

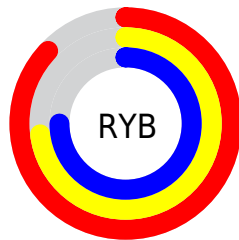
The XYZ color **56.8834, 54.6305, 56.2619** is a light color, and the websafe version is hex **FFCCCC**. A complement of this color would be **59.0070, 67.3410, 76.2211**, and the grayscale version is **53.3928, 56.1734, 61.1729**.

A 20% lighter version of the original color is **89.9251, 92.0150, 100.2099**, and **28.7663, 26.9633, 27.3552** is the 20% darker color. If you saturate the color by 10%, you get **50.4985, 45.1449, 44.0077**, and if you desaturate by 10%, it is **64.2974, 65.6858, 70.3630**.

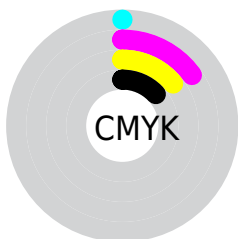
Distribution



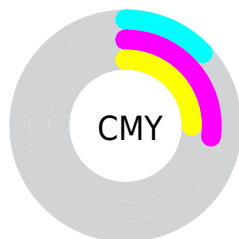
- Red (87%)
- Green (73%)
- Blue (75%)



- Red (87%)
- Yellow (73%)
- Blue (75%)



- Cyan (0%)
- Magenta (15%)
- Yellow (14%)
- Black (13%)





- Cyan (13%)
- Magenta (27%)
- Yellow (25%)

Brightness & Saturation Gradients


These gradients show how the XYZ color 56.8834, 54.6305, 56.2619 changes by changing the brightness by 10 percent. The first figure shows a shift by +10% for each color and the second figure -10%.


Similar to the brightness gradients but the following saturation gradients show a change of the XYZ color 56.8834, 54.6305, 56.2619 by changing the saturation by 10% instead.


 56.8834, 54.6305,
56.2619

 56.8834, 54.6305,
56.2619

403.0335,
404.5098, 428.0938

 41.1514, 39.1060,
40.0075


 99.4274, 96.9994,
100.8770

 28.6256, 26.8422,
27.2306


126.9701,
124.6125, 130.0748

 18.9406, 17.4547,
17.5125


159.1804,
157.0239, 164.4242

 11.7311, 10.5592,
10.4348

196.4236,
194.6181, 204.3438

 6.6318, 5.7713,
5.5788

239.0652,
237.7794, 250.2519

 3.2772, 2.7065,
2.5261

287.4705,

 1.3020, 0.9805,

286.8921, 302.5673

0.8539

342.0048,
342.3408, 361.7084

■ 0.1847, 0.0000,
0.0000

■ 0.0000, 0.0000,
0.0000

■ 56.8834, 54.6305,
56.2619

■ 56.8834, 54.6305,
56.2619

■ 50.4985, 45.1449,
44.0077

■ 64.2974, 65.6858,
70.3630

■ 45.0929, 37.1510,
33.5205

■ 72.7785, 78.3696,
86.3795

■ 40.6194, 30.5749,
24.7198

■ 82.3682, 92.7469,
104.3805

■ 37.0250, 25.3339,
17.5174

■ 83.6291, 94.1123,
108.3655

■ 34.2517, 21.3363,
11.8171

■ 32.2340, 18.4792,
7.5124

■ 30.8968, 16.6430,
4.4825

■ 30.1489, 15.6814,
2.5861

■ 29.9407, 15.4210,
2.0362

Harmonies

Analogous

The Analogous color harmony consists of three colors that are next to each other on the color wheel.



56.8076, 54.6305, 63.6199



56.8834, 54.6305, 56.2619



55.5997, 54.6305, 50.2762

Triad

The Triadic color harmony groups three colors that are evenly spaced from another and form a triangle on the color wheel.



56.8834, 54.6305, 56.2619



48.6015, 54.6305, 49.7787



50.5253, 54.6305, 74.1086

Complementary

The Complementary color scheme is a pair of colors which are on the opposite of each other on the color wheel.



56.8834, 54.6305, 56.2619



59.0070, 67.3410, 76.2211

Split Complementary

Split-complementary colors differ from the complementary color scheme. The scheme consists of three colors, the original color and two neighbors of the complement color.



48.4152, 54.6305, 69.7510



56.8834, 54.6305, 56.2619



47.3299, 54.6305, 55.5301

Square

The Square scheme is like the rectangle color scheme, but the four colors are evenly spaced on the color wheel.



56.8834, 54.6305, 56.2619



50.7873, 54.6305, 46.7469



47.2628, 54.6305, 62.8254



53.0789, 54.6305, 74.3455

Rectangle

The Rectangle color scheme consists of four colors that form a rectangle on the color wheel.



56.8834, 54.6305, 56.2619



54.1696, 54.6305, 47.7009



47.2628, 54.6305, 62.8254



49.7426, 54.6305, 73.0618

Sweetspot

The Sweet Spot groups the original color and five complimentary colors.



56.8849, 54.6329, 56.2631



89.3008, 91.4069, 98.0268



59.6171, 55.6074, 75.9984



18.9476, 19.3162, 20.6663



0.0000, 0.0000, 0.0000



20.3446, 21.4041, 23.3091

Same Dimension

The Same Dimension uses a secret algorithm to generate beautiful new colors.



56.8849, 54.6329, 56.2631



76.0937, 71.7215, 72.8806



59.5836, 60.5490, 55.5634



13.1024, 13.0701, 13.8005



17.4104, 8.9652, 1.2754



1.1444, 0.5874, 0.1692

Inverse Universe

The Inverse Universe completely reimagines the original color for something new.



56.8849, 54.6329, 56.2631



76.0937, 71.7215, 72.8806



55.9566, 60.6070, 77.1563



13.1024, 13.0701, 13.8005



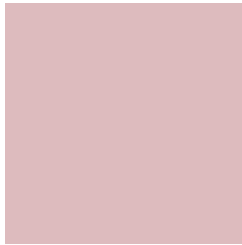
17.4104, 8.9652, 1.2754



1.1444, 0.5874, 0.1692

Previews

White Background



This preview shows how the XYZ color 56.8834, 54.6305, 56.2619 looks on a white background.

Color Contrast Check

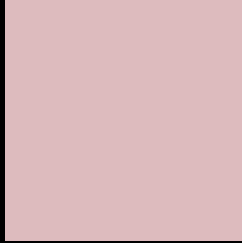
Large Text (above 18pt) WCAG AA × Fail

Any Text WCAG AA × Fail

Large Text (above 18pt) WCAG AAA × Fail

Any Text WCAG AAA × Fail

Black Background



This preview shows how the XYZ color 56.8834, 54.6305, 56.2619 looks on a black background.

Color Contrast Check

Large Text (above 18pt) WCAG AA ✓ Pass

Any Text WCAG AA ✓ Pass

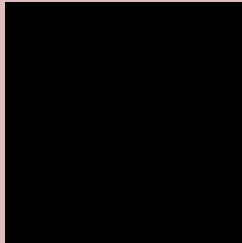
Large Text (above 18pt) WCAG AAA ✓ Pass

Any Text WCAG AAA ✓ Pass

If you want to check with other color combinations, try the [Color Contrast Checker](#).

XYZ 56.8834, 54.6305, 56.2619

Background



This preview shows how black text looks on a background with the XYZ color 56.8834, 54.6305, 56.2619.



This preview shows how white text looks on a background with the XYZ color 56.8834, 54.6305,

Color Blindness Simulation

Color vision deficiency is a very complex topic, and I could not describe the different causes any better than Wikipedia does, so if you want to learn more, you should check out their [article about color blindness](#).

Dichromacy



Original Color

56.8834, 54.6305, 56.2619

Protanopia

52.5826, 54.6207, 58.8104

Deuteranopia

55.8108, 54.7118, 56.3341



Tritanopia

57.8985, 54.3976, 62.0918

Trichromacy



Original Color

56.8834, 54.6305, 56.2619

Protanomaly

53.9886, 54.3773, 58.1024

Deuteranomaly

56.1909, 54.5896, 56.2905

Tritanomaly

57.6469, 54.6329, 59.7314

Monochromacy



Original Color

56.8834, 54.6305, 56.2619

Achromatopsia

53.6758, 56.4712, 61.4971

Achromatomaly

54.5957, 55.6455, 59.4929

CSS Examples

Text

The CSS property to change the color of the text to XYZ 56.8834, 54.6305, 56.2619 is called "color". The color property can be set on classes, ids or directly on the HTML element.

This example shows how text in the color `rgb(221, 187, 190)` looks like.

```
.text, #text, p{  
    color:rgb(221, 187, 190)  
}
```

If you want to add a text shadow in that color use the text-shadow property, you can generate a text shadow directly with our [CSS Text Shadow Generator](#).

Here you see how black text with a 4 pixel rgb(221, 187, 190) colored shadow looks like.

```
.shadow{ text-shadow: 4px 4px 2px rgb(221, 187, 190) }
```

Border

The CSS property to change the border of an element to XYZ 56.8834, 54.6305, 56.2619 is called "border". The border property can be set on classes, ids or directly on the HTML element.

This example shows the color as border, it can be applied via the CSS property "border" or "border-color".

```
.border, #border, table{ border:4px solid rgb(221, 187, 190) }
```


If only the border color should be changed use the property `border-color`.

```
.border{ border-color:rgb(221, 187, 190) }
```

If you want to add a box shadow in that color use:

Here you see how a box with a 4 pixel `rgb(221, 187, 190)` colored shadow looks like.

```
.boxshadow{ -moz-box-shadow:4px 4px 4px 4px rgb(221, 187, 190); -webkit-box-shadow:4px 4px 4px 4px rgb(221, 187, 190); box-shadow:4px 4px 4px 4px rgb(221, 187, 190) }
```

Background

The CSS property to change the background color of an element to XYZ 56.8834, 54.6305, 56.2619 is called "background". The background property can be set on classes, ids or directly on the HTML element.

```
.background, #background, body{  
background: rgb(221, 187, 190) }
```

If only the background color should be changed can be used:

```
.background{ background-color: rgb(221,  
187, 190) }
```

This example shows the color as background, it is applied via the CSS property "background".

To optimize and compress your CSS code, you can use our [online CSS compressor and optimizer](#) based on csstidy. If you want to create a linear or radial gradient as background or border, check our [CSS Gradient Generator](#).

Hey! You found this booklet interesting? Support Converting Colors with the new Membership Option!

The pro membership hides all ads, plus gives you double the colors in the color bucket, and more awesome pro features!

[Learn more, Memberships starting at \\$2.50/m!](#)

**Follow me
on Twitter!**

@ConvertingColor