

Converting Colors

XYZ(56.8920, 58.3253, 49.7093)

Have a look what the booklet for
XYZ(56.8920, 58.3253, 49.7093)
contains.

XYZ(57.0433, 58.4679, 49.8739)	3
<i>Conversions</i>	4
<i>Details</i>	6
<i>Harmonies</i>	12
<i>Previews</i>	24
<i>Color Blindness Simulation</i>	28
<i>CSS Examples</i>	31

Color

**XYZ(57.0433, 58.4679,
49.8739)**

Conversions

Conversions Part 1

Format	Color
Hex	DAC6B1
RGB	218, 198, 177
RGB Percent	85%, 78%, 69%
CMY	0.1451, 0.2235, 0.3059
CMYK	0.00, 0.09, 0.19, 0.15
HSL	31°, 36%, 77%
HSV	31°, 19%, 85%
XYZ	57.0433, 58.4679, 49.8739
YIQ	201.5860, 18.6610, -2.2910

Conversions

Conversions Part 2

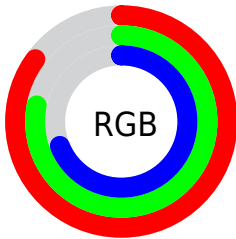
Format	Color
RYB	216, 218, 177
Decimal	14337713
CIELab	81.00, 3.66, 13.07
CIELCh	81, 13.570, 74.363
Yxy	58.4679, 0.3449, 0.3535
Android (android.graphics.Color)	4292527793 (0xFFDAC6B1)
YUV	201.5860, -12.1209, 14.3951
Hunter-Lab	76.4643, -0.6494, 14.8531

Details

The XYZ color **57.0433, 58.4679, 49.8739** is a light color, and the websafe version is hex **CCCCCC**. A complement of this color would be **50.7523, 54.3402, 74.1438**, and the grayscale version is **55.9473, 58.8610, 64.0996**.

A 20% lighter version of the original color is **91.7080, 98.6632, 91.3012**, and **28.7156, 29.1883, 23.1892** is the 20% darker color. If you saturate the color by 10%, you get **52.6966, 52.9782, 38.5475**, and if you desaturate by 10%, it is **61.9109, 64.4429, 63.0878**.

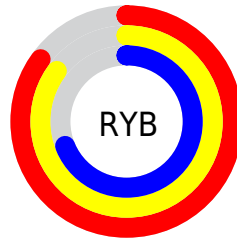
Distribution



Red (85%)

Green (78%)

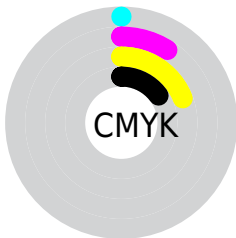
Blue (69%)



Red (85%)

Yellow (85%)

Blue (69%)

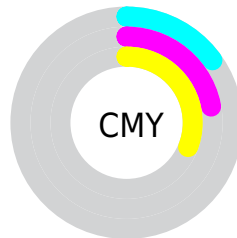


Cyan (0%)

Magenta (9%)

Yellow (19%)

Black (15%)



Cyan (15%)

Magenta (22%)

Yellow (31%)

Brightness & Saturation Gradients

These gradients show how the XYZ color 57.0433, 58.4679, 49.8739 changes by changing the brightness by 10 percent. The first figure shows a shift by +10% for each color and the second figure -10%.

Similar to the brightness gradients but the following saturation gradients show a change of the XYZ color 57.0433, 58.4679, 49.8739 by changing the saturation by 10% instead.

■ 57.0433, 58.4679,
49.8739

■ 57.0433, 58.4679,
49.8739

403.6231,
418.9272, 402.8935

■ 41.2803, 42.1849,
34.9427

■ 99.6594, 102.6039,
91.3824

■ 28.7268, 29.2461,
23.3356

127.2431,
131.2257, 118.7968

■ 19.0175, 19.2671,
14.6339

159.4978,
164.7293, 151.2094

■ 11.7870, 11.8634,
8.4191

196.7888,
203.4990, 189.0386

■ 6.6700, 6.6507,
4.2727

239.4815,
247.9193, 232.7032

■ 3.3011, 3.2447,
1.7761

287.9412,

■ 1.3149, 1.2608,

298.3745, 282.6214

0.4121

342.5333,
355.2490, 339.2121

■ 0.1943, 0.1105,
0.0000

■ 0.0000, 0.0000,
0.0000

■ 57.0433, 58.4679,
49.8739

■ 57.0433, 58.4679,
49.8739

■ 52.6966, 52.9782,
38.5475

■ 61.9109, 64.4429,
63.0878

■ 48.8462, 47.9524,
29.0173

■ 67.3135, 70.9083,
78.2675

■ 45.4723, 43.3789,
21.1894

■ 73.2703, 77.8790,
95.4915

■ 42.5517, 39.2424,
14.9604

■ 78.2807, 84.7598,
106.8422

■ 40.0589, 35.5267,
10.2151

■ 81.5122, 91.2227,
107.9193

■ 37.9655, 32.2139,
6.8225

■ 82.7236, 93.6455,
108.3231

■ 36.2381, 29.2840,
4.6286

■ 34.8275, 26.7105,
3.3947

■ 34.6727, 26.4238,
3.2729

Harmonies

Analogous

The Analogous color harmony consists of three colors that are next to each other on the color wheel.



59.5310, 58.4679, 53.4292



57.0433, 58.4679, 49.8739



54.2405, 58.4679, 49.7981

Triad

The Triadic color harmony groups three colors that are evenly spaced from another and form a triangle on the color wheel.



57.0433, 58.4679, 49.8739



50.4931, 58.4679, 67.5838



59.4420, 58.4679, 75.3959

Complementary

The Complementary color scheme is a pair of colors which are on the opposite of each other on the color wheel.



57.0433, 58.4679, 49.8739



50.7523, 54.3402, 74.1438

Split Complementary

Split-complementary colors differ from the complementary color scheme. The scheme consists of three colors, the original color and two neighbors of the complement color.



56.9251, 58.4679, 79.8852



57.0433, 58.4679, 49.8739



51.7925, 58.4679, 75.1235

Square

The Square scheme is like the rectangle color scheme, but the four colors are evenly spaced on the color wheel.



57.0433, 58.4679, 49.8739



50.5223, 58.4679, 59.5752



54.1262, 58.4679, 79.7815



60.9474, 58.4679, 67.9307

Rectangle

The Rectangle color scheme consists of four colors that form a rectangle on the color wheel.



57.0433, 58.4679, 49.8739



52.5734, 58.4679, 51.7069



54.1262, 58.4679, 79.7815



58.6825, 58.4679, 77.3300

Sweetspot

The Sweet Spot groups the original color and five complimentary colors.



57.0449, 58.4705, 49.8751



90.3492, 94.3847, 95.6608



54.7716, 50.4046, 59.9671



19.2326, 20.0747, 20.1804



0.0000, 0.0000, 0.0000



20.3446, 21.4041, 23.3091

Same Dimension

The Same Dimension uses a secret algorithm to generate beautiful new colors.



57.0449, 58.4705, 49.8751



78.5480, 79.8701, 63.7102



61.9211, 68.2229, 51.5005



13.6048, 14.1490, 13.7396



20.8807, 16.0469, 1.9968



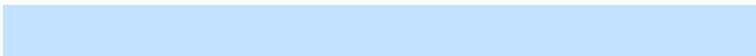
1.4389, 1.2120, 0.1581

Inverse Universe

The Inverse Universe completely reimagines the original color for something new.



50.7523, 54.3402, 74.1438



67.8187, 72.8280, 105.0905



46.5092, 45.8542, 72.7294



12.8603, 13.6603, 16.6110



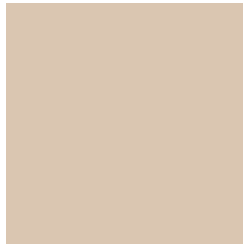
10.7961, 9.4616, 40.9957



0.7855, 0.7851, 2.6846

Previews

White Background



This preview shows how the XYZ color 57.0433, 58.4679, 49.8739 looks on a white background.

Color Contrast Check

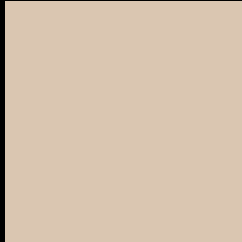
Large Text (above 18pt) WCAG AA × Fail

Any Text WCAG AA × Fail

Large Text (above 18pt) WCAG AAA × Fail

Any Text WCAG AAA × Fail

Black Background



This preview shows how the XYZ color 57.0433, 58.4679, 49.8739 looks on a black background.

Color Contrast Check

Large Text (above 18pt) WCAG AA ✓ Pass

Any Text WCAG AA ✓ Pass

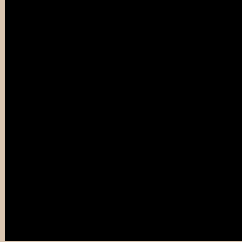
Large Text (above 18pt) WCAG AAA ✓ Pass

Any Text WCAG AAA ✓ Pass

If you want to check with other color combinations, try the [Color Contrast Checker](#).

XYZ 57.0433, 58.4679, 49.8739

Background



This preview shows how black text looks on a background with the XYZ color 57.0433, 58.4679, 49.8739.



This preview shows how white text looks on a background with the XYZ color 57.0433, 58.4679, 49.8739.

Color Blindness Simulation

Color vision deficiency is a very complex topic, and I could not describe the different causes any better than Wikipedia does, so if you want to learn more, you should check out their [article about color blindness](#).

Dichromacy



Original Color

57.0433, 58.4679, 49.8739

Protanopia

55.5009, 58.6893, 50.5224

Deuteranopia

59.6408, 58.4559, 50.2592



Tritanopia

60.7028, 58.2730, 68.3700

Trichromacy



Original Color

57.0433, 58.4679, 49.8739

Protanomaly

56.1307, 58.6690, 50.4853

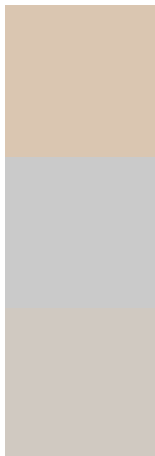
Deuteranomaly

58.6023, 58.2521, 50.2746

Tritanomaly

59.4119, 58.4336, 60.9708

Monochromacy



Original Color

57.0433, 58.4679, 49.8739

Achromatopsia

56.1383, 59.0619, 64.3184

Achromatomaly

56.5247, 59.0334, 58.8675

CSS Examples

Text

The CSS property to change the color of the text to XYZ 57.0433, 58.4679, 49.8739 is called "color". The color property can be set on classes, ids or directly on the HTML element.

This example shows how text in the color `rgb(218, 198, 177)` looks like.

```
.text, #text, p{  
    color:rgb(218, 198, 177)  
}
```

If you want to add a text shadow in that color use the text-shadow property, you can generate a text shadow directly with our [CSS Text Shadow Generator](#).

Here you see how black text with a 4 pixel rgb(218, 198, 177) colored shadow looks like.

```
.shadow{ text-shadow: 4px 4px 2px rgb(218, 198, 177) }
```

Border

The CSS property to change the border of an element to XYZ 57.0433, 58.4679, 49.8739 is called "border". The border property can be set on classes, ids or directly on the HTML element.

This example shows the color as border, it can be applied via the CSS property "border" or "border-color".

```
.border, #border, table{ border:4px solid rgb(218, 198, 177) }
```


If only the border color should be changed use the property `border-color`.

```
.border{ border-color:rgb(218, 198, 177) }
```

If you want to add a box shadow in that color use:

Here you see how a box with a 4 pixel `rgb(218, 198, 177)` colored shadow looks like.

```
.boxshadow{ -moz-box-shadow:4px 4px 4px  
4px rgb(218, 198, 177); -webkit-box-  
shadow:4px 4px 4px 4px rgb(218, 198, 177);  
box-shadow:4px 4px 4px 4px rgb(218, 198,  
177) }
```

Background

The CSS property to change the background color of an element to XYZ 57.0433, 58.4679, 49.8739 is called "background". The background property can be set on classes, ids or directly on the HTML element.

```
.background, #background, body{  
background: rgb(218, 198, 177) }
```

If only the background color should be changed can be used:

```
.background{ background-color: rgb(218,  
198, 177) }
```

This example shows the color as background, it is applied via the CSS property "background".

To optimize and compress your CSS code, you can use our [online CSS compressor and optimizer](#) based on csstidy. If you want to create a linear or radial gradient as background or border, check our [CSS Gradient Generator](#).

Hey! You found this booklet interesting? Support Converting Colors with the new Membership Option!

The pro membership hides all ads, plus gives you double the colors in the color bucket, and more awesome pro features!

[Learn more, Memberships starting at \\$2.50/m!](#)

**Follow me
on Twitter!**

@ConvertingColor