

Converting Colors

XYZ(56.9254, 55.2610, 57.5353)

Have a look what the booklet for
XYZ(56.9254, 55.2610, 57.5353)
contains.

XYZ(56.9254, 55.2610, 57.5353)	3
<i>Conversions</i>	4
<i>Details</i>	6
<i>Harmonies</i>	12
<i>Previews</i>	24
<i>Color Blindness Simulation</i>	28
<i>CSS Examples</i>	31

Color

**XYZ(56.9254, 55.2610,
57.5353)**

Conversions

Conversions Part 1

Format	Color
Hex	DBBDC0
RGB	219, 189, 192
RGB Percent	86%, 74%, 75%
CMY	0.1412, 0.2588, 0.2471
CMYK	0.00, 0.14, 0.12, 0.14
HSL	354°, 29%, 80%
HSV	354°, 14%, 86%
XYZ	56.9254, 55.2610, 57.5353
YIQ	198.3120, 16.9170, 7.2930

Conversions

Conversions Part 2

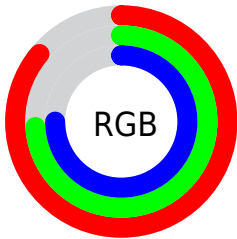
Format	Color
R_{YB}	219, 189, 192
Decimal	14400960
CIE _{Lab}	79.19, 11.16, 2.43
CIE _{LCh}	79, 11.417, 12.295
Yxy	55.2610, 0.3354, 0.3256
Android (android.graphics.Color)	4292591040 (0xFFDBBDC0)
YUV	198.3120, -3.1118, 18.1434
Hunter-Lab	74.3377, 6.5984, 6.1476

Details

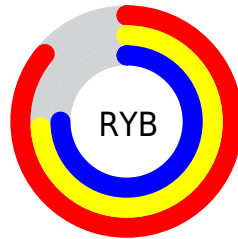
The XYZ color **56.9254, 55.2610, 57.5353** is a light color, and the websafe version is hex **FFCCCC**. A complement of this color would be **58.7146, 66.4410, 74.6987**, and the grayscale version is **53.8787, 56.6845, 61.7295**.

A 20% lighter version of the original color is **90.8357, 93.3421, 102.0362**, and **28.7742, 27.3649, 28.1915** is the 20% darker color. If you saturate the color by 10%, you get **50.5258, 45.7258, 45.3382**, and if you desaturate by 10%, it is **64.3320, 66.3407, 71.5127**.

Distribution



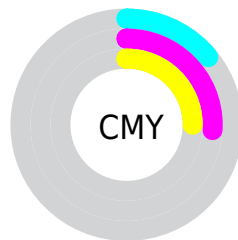
- Red (86%)
- Green (74%)
- Blue (75%)



- Red (86%)
- Yellow (74%)
- Blue (75%)



- Cyan (0%)
- Magenta (14%)
- Yellow (12%)
- Black (14%)





- Cyan (14%)
- Magenta (26%)
- Yellow (25%)

Brightness & Saturation Gradients


These gradients show how the XYZ color 56.9254, 55.2610, 57.5353 changes by changing the brightness by 10 percent. The first figure shows a shift by +10% for each color and the second figure -10%.


Similar to the brightness gradients but the following saturation gradients show a change of the XYZ color 56.9254, 55.2610, 57.5353 by changing the saturation by 10% instead.


 56.9254, 55.2610,
57.5353

 56.9254, 55.2610,
57.5353


403.1884,
406.9005, 433.0019

 41.1853, 39.6107,
41.0229


 99.4883, 97.9233,
102.7539

 28.6522, 27.2352,
28.0172


127.0418,
125.7040, 132.2973

 18.9608, 17.7499,
18.0995


159.2638,
158.2971, 167.0214

 11.7458, 10.7706,
10.8512

196.5196,
196.0868, 207.3447

 6.6418, 5.9128,
5.8540

239.1746,
239.4577, 253.6859

 3.2834, 2.7921,
2.6891

287.5942,

 1.3054, 1.0242,

288.7939, 306.4635

0.9380

342.1437,
344.4801, 366.0960

■ 0.1872, 0.0000,
0.0000

■ 0.0000, 0.0000,
0.0000

■ 56.9254, 55.2610,
57.5353

■ 56.9254, 55.2610,
57.5353

■ 50.5258, 45.7258,
45.3382

■ 64.3320, 66.3407,
71.5127

■ 45.0852, 37.6596,
34.8465

■ 72.7816, 79.0215,
87.3342

■ 40.5587, 30.9916,
25.9852

■ 82.3143, 93.3662,
105.0649

■ 36.8959, 25.6420,
18.6721

■ 83.0236, 93.8002,
108.3372

■ 34.0414, 21.5234,
12.8182

■ 31.9337, 18.5373,
8.3252

■ 30.5018, 16.5706,
5.0825

■ 29.6612, 15.4863,
2.9620

■ 29.3573, 15.1176,
2.1234

Harmonies

Analogous

The Analogous color harmony consists of three colors that are next to each other on the color wheel.



56.8125, 55.2610, 64.0699



56.9254, 55.2610, 57.5353



55.8343, 55.2610, 52.1091

Triad

The Triadic color harmony groups three colors that are evenly spaced from another and form a triangle on the color wheel.



56.9254, 55.2610, 57.5353



49.6283, 55.2610, 51.3513



51.2018, 55.2610, 72.9422

Complementary

The Complementary color scheme is a pair of colors which are on the opposite of each other on the color wheel.



56.9254, 55.2610, 57.5353



58.7146, 66.4410, 74.6987

Split Complementary

Split-complementary colors differ from the complementary color scheme. The scheme consists of three colors, the original color and two neighbors of the complement color.



49.3470, 55.2610, 69.0218



56.9254, 55.2610, 57.5353



48.4568, 55.2610, 56.4313

Square

The Square scheme is like the rectangle color scheme, but the four colors are evenly spaced on the color wheel.



56.9254, 55.2610, 57.5353



51.5958, 55.2610, 48.7159



48.3554, 55.2610, 62.8836



53.4631, 55.2610, 73.2915

Rectangle

The Rectangle color scheme consists of four colors that form a rectangle on the color wheel.



56.9254, 55.2610, 57.5353



54.5888, 55.2610, 49.7232



48.3554, 55.2610, 62.8836



50.5117, 55.2610, 71.9859

Sweetspot

The Sweet Spot groups the original color and five complimentary colors.



56.9269, 55.2635, 57.5365



90.4387, 93.0866, 100.2439



59.3043, 56.1111, 74.7232



19.1777, 19.6549, 21.1181



0.0000, 0.0000, 0.0000



20.3446, 21.4041, 23.3091

Same Dimension

The Same Dimension uses a secret algorithm to generate beautiful new colors.



56.9269, 55.2635, 57.5365



78.0282, 74.5308, 76.7920



59.2870, 60.5094, 56.7018



13.1086, 13.0725, 13.8333



17.4259, 8.9714, 1.3567



1.1473, 0.5886, 0.1848

Inverse Universe

The Inverse Universe completely reimagines the original color for something new.



56.9269, 55.2635, 57.5365



78.0282, 74.5308, 76.7920



56.0873, 60.5609, 75.7517



13.1086, 13.0725, 13.8333



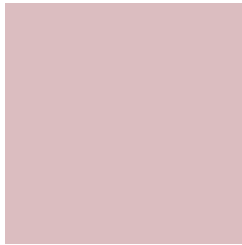
17.4259, 8.9714, 1.3567



1.1473, 0.5886, 0.1848

Previews

White Background



This preview shows how the XYZ color 56.9254, 55.2610, 57.5353 looks on a white background.

Color Contrast Check

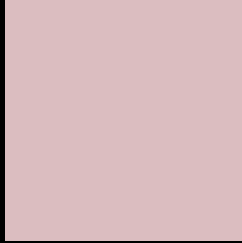
Large Text (above 18pt) WCAG AA × Fail

Any Text WCAG AA × Fail

Large Text (above 18pt) WCAG AAA × Fail

Any Text WCAG AAA × Fail

Black Background



This preview shows how the XYZ color 56.9254, 55.2610, 57.5353 looks on a black background.

Color Contrast Check

Large Text (above 18pt) WCAG AA ✓ Pass

Any Text WCAG AA ✓ Pass

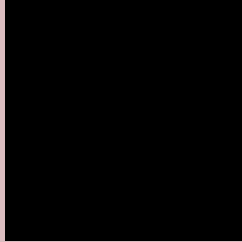
Large Text (above 18pt) WCAG AAA ✓ Pass

Any Text WCAG AAA ✓ Pass

If you want to check with other color combinations, try the [Color Contrast Checker](#).

XYZ 56.9254, 55.2610, 57.5353

Background



This preview shows how black text looks on a background with the XYZ color 56.9254, 55.2610, 57.5353.



This preview shows how white text looks on a background with the XYZ color 56.9254, 55.2610,

Color Blindness Simulation

Color vision deficiency is a very complex topic, and I could not describe the different causes any better than Wikipedia does, so if you want to learn more, you should check out their [article about color blindness](#).

Dichromacy



Original Color

56.9254, 55.2610, 57.5353

Protanopia

53.2983, 55.2951, 60.0884

Deuteranopia

56.5432, 55.3844, 57.5793



Tritanopia

57.9462, 55.0206, 63.4431

Trichromacy



Original Color

56.9254, 55.2610, 57.5353

Protanomaly

54.6524, 55.3455, 59.4320

Deuteranomaly

56.8413, 55.5381, 57.5932

Tritanomaly

57.6915, 55.2593, 61.0515

Monochromacy



Original Color

56.9254, 55.2610, 57.5353

Achromatopsia

53.6758, 56.4712, 61.4971

Achromatomaly

54.9325, 56.1375, 60.1649

CSS Examples

Text

The CSS property to change the color of the text to XYZ 56.9254, 55.2610, 57.5353 is called "color". The color property can be set on classes, ids or directly on the HTML element.

This example shows how text in the color `rgb(219, 189, 192)` looks like.

```
.text, #text, p{  
    color:rgb(219, 189, 192)  
}
```

If you want to add a text shadow in that color use the text-shadow property, you can generate a text shadow directly with our [CSS Text Shadow Generator](#).

Here you see how black text with a 4 pixel rgb(219, 189, 192) colored shadow looks like.

```
.shadow{ text-shadow: 4px 4px 2px rgb(219, 189, 192) }
```

Border

The CSS property to change the border of an element to XYZ 56.9254, 55.2610, 57.5353 is called "border". The border property can be set on classes, ids or directly on the HTML element.

This example shows the color as border, it can be applied via the CSS property "border" or "border-color".

```
.border, #border, table{ border:4px solid rgb(219, 189, 192) }
```


If only the border color should be changed use the property `border-color`.

```
.border{ border-color:rgb(219, 189, 192) }
```

If you want to add a box shadow in that color use:

Here you see how a box with a 4 pixel `rgb(219, 189, 192)` colored shadow looks like.

```
.boxshadow{ -moz-box-shadow:4px 4px 4px  
4px rgb(219, 189, 192); -webkit-box-  
shadow:4px 4px 4px 4px rgb(219, 189, 192);  
box-shadow:4px 4px 4px 4px rgb(219, 189,  
192) }
```

Background

The CSS property to change the background color of an element to XYZ 56.9254, 55.2610, 57.5353 is called "background". The background property can be set on classes, ids or directly on the HTML element.

```
.background, #background, body{  
background: rgb(219, 189, 192) }
```

If only the background color should be changed can be used:

```
.background{ background-color: rgb(219,  
189, 192) }
```

This example shows the color as background, it is applied via the CSS property "background".

To optimize and compress your CSS code, you can use our [online CSS compressor and optimizer](#) based on csstidy. If you want to create a linear or radial gradient as background or border, check our [CSS Gradient Generator](#).

Hey! You found this booklet interesting? Support Converting Colors with the new Membership Option!

The pro membership hides all ads, plus gives you double the colors in the color bucket, and more awesome pro features!

[Learn more, Memberships starting at \\$2.50/m!](#)

**Follow me
on Twitter!**

@ConvertingColor