

Converting Colors

XYZ(56.9262, 57.9261, 61.1971)

Have a look what the booklet for
XYZ(56.9262, 57.9261, 61.1971)
contains.

XYZ(56.9083, 57.8126, 60.9829)	3
<i>Conversions</i>	4
<i>Details</i>	6
<i>Harmonies</i>	12
<i>Previews</i>	24
<i>Color Blindness Simulation</i>	28
<i>CSS Examples</i>	31

Color

**XYZ(56.9083, 57.8126,
60.9829)**

Conversions

Conversions Part 1

Format	Color
Hex	D3C5C5
RGB	211, 197, 197
RGB Percent	83%, 77%, 77%
CMY	0.1725, 0.2274, 0.2274
CMYK	0.00, 0.07, 0.07, 0.17
HSL	0°, 14%, 80%
HSV	0°, 7%, 83%
XYZ	56.9083, 57.8126, 60.9829
YIQ	201.1860, 8.3440, 2.9680

Conversions

Conversions Part 2

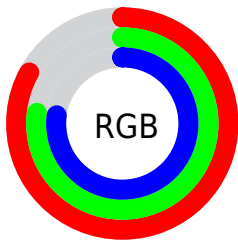
Format	Color
R_{YB}	211, 197, 197
Decimal	13878725
CIE Lab	80.63, 4.89, 1.75
CIE LCh	81, 5.197, 19.704
Yxy	57.8126, 0.3239, 0.3290
Android (android.graphics.Color)	4292068805 (0xFFD3C5C5)
YUV	201.1860, -2.0637, 8.6069
Hunter-Lab	76.0346, 0.5383, 5.6712

Details

The XYZ color **56.9083, 57.8126, 60.9829** is a light color, and the websafe version is hex **CCCCCC**. A complement of this color would be **58.0781, 63.1611, 70.7591**, and the grayscale version is **55.6428, 58.5406, 63.7507**.

A 20% lighter version of the original color is **94.5712, 99.2994, 107.9482**, and **28.4907, 28.6960, 30.0239** is the 20% darker color. If you saturate the color by 10%, you get **50.1988, 47.9952, 47.6414**, and if you desaturate by 10%, it is **64.6298, 69.1109, 76.3327**.

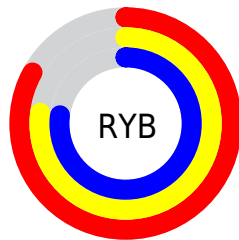
Distribution



Red (83%)

Green (77%)

Blue (77%)



Red (83%)

Yellow (77%)

Blue (77%)

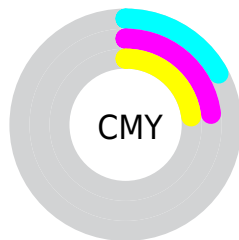


Cyan (0%)

Magenta (7%)

Yellow (7%)

Black (17%)



Cyan (17%)

Magenta (23%)

Yellow (23%)

Brightness & Saturation Gradients

These gradients show how the XYZ color 56.9083, 57.8126, 60.9829 changes by changing the brightness by 10 percent. The first figure shows a shift by +10% for each color and the second figure -10%.

Similar to the brightness gradients but the following saturation gradients show a change of the XYZ color 56.9083, 57.8126, 60.9829 by changing the saturation by 10% instead.

■ 56.9083, 57.8126,
60.9829

■ 56.9083, 57.8126,
60.9829

403.1253,
416.4873, 446.1161

■ 41.1715, 41.6580,
43.7809

99.4635, 101.6499,
107.8115

■ 28.6414, 28.8336,
30.1624

127.0126,
130.1014, 138.2751

■ 18.9526, 18.9550,
19.7088

159.2298,
163.4207, 173.9964

■ 11.7398, 11.6377,
12.0016

196.4805,
201.9921, 215.3938

■ 6.6377, 6.4975,
6.6222

239.1301,
246.2001, 262.8860

■ 3.2809, 3.1499,
3.1521

287.5438,

■ 1.3040, 1.2105,

296.4290, 316.8914

1.1728

342.0871,
353.0633, 377.8286

■ 0.1862, 0.0702,
0.0000

■ 0.0000, 0.0000,
0.0000

■ 56.9083, 57.8126,
60.9829

■ 56.9083, 57.8126,
60.9829

■ 50.1988, 47.9952,
47.6414

■ 64.6298, 69.1109,
76.3327

■ 44.4547, 39.5903,
36.2215

■ 73.3976, 81.9399,
93.7652

■ 39.6331, 32.5351,
26.6361

■ 80.6743, 92.5891,
108.2272

■ 35.6860, 26.7593,
18.7895

■ 32.5610, 22.1864,
12.5774

■ 30.2001, 18.7315,
7.8847

■ 28.5377, 16.2987,
4.5810

■ 27.4975, 14.7761,
2.5140

■ 26.9809, 14.0199,
1.4880

Harmonies

Analogous

The Analogous color harmony consists of three colors that are next to each other on the color wheel.



56.9977, 57.8126, 64.0068



56.9083, 57.8126, 60.9829



56.2901, 57.8126, 58.5615

Triad

The Triadic color harmony groups three colors that are evenly spaced from another and form a triangle on the color wheel.



56.9083, 57.8126, 60.9829



53.3953, 57.8126, 59.2149



54.5823, 57.8126, 68.9233

Complementary

The Complementary color scheme is a pair of colors which are on the opposite of each other on the color wheel.



56.9083, 57.8126, 60.9829



58.0781, 63.1611, 70.7591

Split Complementary

Split-complementary colors differ from the complementary color scheme. The scheme consists of three colors, the original color and two neighbors of the complement color.



53.6297, 57.8126, 67.5485



56.9083, 57.8126, 60.9829



52.9502, 57.8126, 61.9011

Square

The Square scheme is like the rectangle color scheme, but the four colors are evenly spaced on the color wheel.



56.9083, 57.8126, 60.9829



54.2586, 57.8126, 57.5639



53.0355, 57.8126, 64.9551



55.6455, 57.8126, 68.6580

Rectangle

The Rectangle color scheme consists of four colors that form a rectangle on the color wheel.



56.9083, 57.8126, 60.9829



55.6657, 57.8126, 57.5835



53.0355, 57.8126, 64.9551



54.2388, 57.8126, 68.6360

Sweetspot

The Sweet Spot groups the original color and five complimentary colors.



56.9099, 57.8151, 60.9841



92.6346, 96.4657, 104.0977



58.5889, 58.4854, 69.8297



19.8529, 20.6846, 22.3315



0.0000, 0.0000, 0.0000



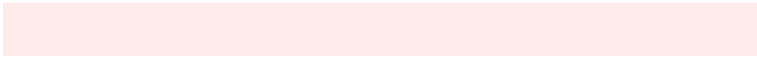
20.3446, 21.4041, 23.3091

Same Dimension

The Same Dimension uses a secret algorithm to generate beautiful new colors.



56.9099, 57.8151, 60.9841



85.7731, 86.4259, 90.4557



58.5357, 61.0667, 61.5261



11.8090, 11.8087, 12.2689



16.2129, 8.3587, 0.7589



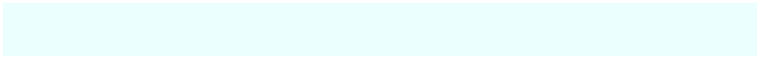
0.9066, 0.4675, 0.0425

Inverse Universe

The Inverse Universe completely reimagines the original color for something new.



58.0781, 63.1611, 70.7591



87.9374, 96.3308, 108.5667



56.3775, 59.7601, 70.1923



12.1582, 13.4066, 15.1906



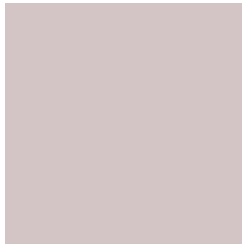
21.1460, 30.9386, 42.0497



1.1824, 1.7301, 2.3512

Previews

White Background



This preview shows how the XYZ color 56.9083, 57.8126, 60.9829 looks on a white background.

Color Contrast Check

Large Text (above 18pt) WCAG AA × Fail

Any Text WCAG AA × Fail

Large Text (above 18pt) WCAG AAA × Fail

Any Text WCAG AAA × Fail

Black Background



This preview shows how the XYZ color 56.9083, 57.8126, 60.9829 looks on a black background.

Color Contrast Check

Large Text (above 18pt) WCAG AA ✓ Pass

Any Text WCAG AA ✓ Pass

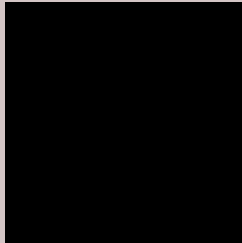
Large Text (above 18pt) WCAG AAA ✓ Pass

Any Text WCAG AAA ✓ Pass

If you want to check with other color combinations, try the [Color Contrast Checker](#).

XYZ 56.9083, 57.8126, 60.9829

Background



This preview shows how black text looks on a background with the XYZ color 56.9083, 57.8126, 60.9829.



This preview shows how white text looks on a background with the XYZ color 56.9083, 57.8126,

Color Blindness Simulation

Color vision deficiency is a very complex topic, and I could not describe the different causes any better than Wikipedia does, so if you want to learn more, you should check out their [article about color blindness](#).

Dichromacy



Original Color

56.9083, 57.8126, 60.9829

Protanopia

55.5183, 57.7614, 61.6490

Deuteranopia

59.0000, 57.8764, 61.4877



Tritanopia

58.5885, 57.8295, 69.0470

Trichromacy



Original Color

56.9083, 57.8126, 60.9829

Protanomaly

56.1193, 57.7308, 61.6114

Deuteranomaly

58.3234, 57.8591, 61.5200

Tritanomaly

57.9108, 57.8847, 65.8782

Monochromacy



Original Color

56.9083, 57.8126, 60.9829

Achromatopsia

55.5167, 58.4078, 63.6061

Achromatomaly

56.2564, 58.4578, 62.9620

CSS Examples

Text

The CSS property to change the color of the text to XYZ 56.9083, 57.8126, 60.9829 is called "color". The color property can be set on classes, ids or directly on the HTML element.

This example shows how text in the color rgb(211, 197, 197) looks like.

```
.text, #text, p{  
    color:rgb(211, 197, 197)  
}
```

If you want to add a text shadow in that color use the text-shadow property, you can generate a text shadow directly with our [CSS Text Shadow Generator](#).

Here you see how black text with a 4 pixel rgb(211, 197, 197) colored shadow looks like.

```
.shadow{ text-shadow: 4px 4px 2px rgb(211, 197, 197) }
```

Border

The CSS property to change the border of an element to XYZ 56.9083, 57.8126, 60.9829 is called "border". The border property can be set on classes, ids or directly on the HTML element.

This example shows the color as border, it can be applied via the CSS property "border" or "border-color".

```
.border, #border, table{ border:4px solid rgb(211, 197, 197) }
```


If only the border color should be changed use the property `border-color`.

```
.border{ border-color:rgb(211, 197, 197) }
```

If you want to add a box shadow in that color use:

Here you see how a box with a 4 pixel `rgb(211, 197, 197)` colored shadow looks like.

```
.boxshadow{ -moz-box-shadow:4px 4px 4px  
4px rgb(211, 197, 197); -webkit-box-  
shadow:4px 4px 4px 4px rgb(211, 197, 197);  
box-shadow:4px 4px 4px 4px rgb(211, 197,  
197) }
```

Background

The CSS property to change the background color of an element to XYZ 56.9083, 57.8126, 60.9829 is called "background". The background property can be set on classes, ids or directly on the HTML element.

```
.background, #background, body{  
background: rgb(211, 197, 197) }
```

If only the background color should be changed can be used:

```
.background{ background-color: rgb(211,  
197, 197) }
```

This example shows the color as background, it is applied via the CSS property "background".

To optimize and compress your CSS code, you can use our [online CSS compressor and optimizer](#) based on csstidy. If you want to create a linear or radial gradient as background or border, check our [CSS Gradient Generator](#).

Hey! You found this booklet interesting? Support Converting Colors with the new Membership Option!

The pro membership hides all ads, plus gives you double the colors in the color bucket, and more awesome pro features!

[Learn more, Memberships starting at \\$2.50/m!](#)

**Follow me
on Twitter!**

@ConvertingColor