

Converting Colors

XYZ(56.9526, 56.5223, 46.9390)

Have a look what the booklet for
XYZ(56.9526, 56.5223, 46.9390)
contains.

XYZ(57.0365, 56.5251, 46.9340)	3
<i>Conversions</i>	4
<i>Details</i>	6
<i>Harmonies</i>	12
<i>Previews</i>	24
<i>Color Blindness Simulation</i>	28
<i>CSS Examples</i>	31

Color

**XYZ(57.0365, 56.5251,
46.9340)**

Conversions

Conversions Part 1

Format	Color
Hex	E0C0AC
RGB	224, 192, 172
RGB Percent	88%, 75%, 67%
CMY	0.1216, 0.2470, 0.3255
CMYK	0.00, 0.14, 0.23, 0.12
HSL	23°, 46%, 78%
HSV	23°, 23%, 88%
XYZ	57.0365, 56.5251, 46.9340
YIQ	199.2880, 25.4920, 0.5640

Conversions

Conversions Part 2

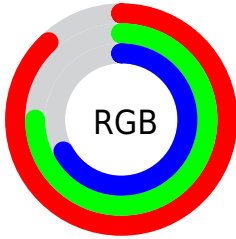
Format	Color
R_{YB}	224, 205, 172
Decimal	14729388
CIE _{Lab}	79.91, 8.32, 14.29
CIE _{LCh}	80, 16.534, 59.771
Yxy	56.5251, 0.3554, 0.3522
Android (android.graphics.Color)	4292919468 (0xFFE0C0AC)
YUV	199.2880, -13.4530, 21.6724
Hunter-Lab	75.1832, 3.8456, 15.6157

Details

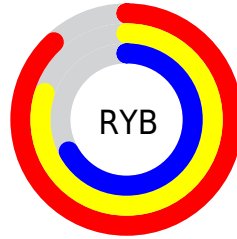
The XYZ color **57.0365, 56.5251, 46.9340** is a light color, and the websafe version is hex **FFCCCC**. A complement of this color would be **52.0602, 57.3367, 78.8446**, and the grayscale version is **54.5326, 57.3725, 62.4786**.

A 20% lighter version of the original color is **88.6725, 93.9409, 86.1319**, and **28.7712, 28.1461, 21.6856** is the 20% darker color. If you saturate the color by 10%, you get **52.1783, 49.9661, 35.5805**, and if you desaturate by 10%, it is **62.5438, 63.8012, 60.2941**.

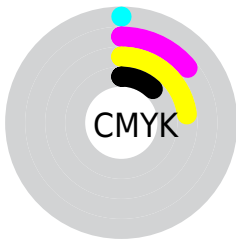
Distribution



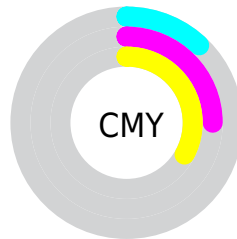
- Red (88%)
- Green (75%)
- Blue (67%)



- Red (88%)
- Yellow (80%)
- Blue (67%)



- Cyan (0%)
- Magenta (14%)
- Yellow (23%)
- Black (12%)



- Cyan (12%)
- Magenta (25%)
- Yellow (33%)

Brightness & Saturation Gradients

These gradients show how the XYZ color 57.0365, 56.5251, 46.9340 changes by changing the brightness by 10 percent. The first figure shows a shift by +10% for each color and the second figure -10%.

Similar to the brightness gradients but the following saturation gradients show a change of the XYZ color 57.0365, 56.5251, 46.9340 by changing the saturation by 10% instead.

■ 57.0365, 56.5251,
46.9340

■ 57.0365, 56.5251,
46.9340

403.5980,
411.6674, 390.9372

■ 41.2748, 40.6241,
32.6295

■ 99.6495, 99.7719,
86.9640

■ 28.7225, 28.0255,
21.5740

127.2315,
127.8865, 113.5267

■ 19.0142, 18.3449,
13.3489

159.4843,
160.8411, 145.0125

■ 11.7846, 11.1979,
7.5357

196.7733,
199.0200, 181.8399

■ 6.6683, 6.2001,
3.7158

239.4638,
242.8077, 224.4275

■ 3.3000, 2.9671,
1.4708

287.9212,

■ 1.3143, 1.1146,

292.5886, 273.1939

0.1960

342.5108,
348.7470, 328.5576

■ 0.1939, 0.0000,
0.0000

■ 0.0000, 0.0000,
0.0000

■ 57.0365, 56.5251,
46.9340

■ 57.0365, 56.5251,
46.9340

■ 52.1783, 49.9661,
35.5805

■ 62.5438, 63.8012,
60.2941

■ 47.9389, 44.0936,
26.1318

■ 68.7200, 71.8083,
75.7489

■ 44.2917, 38.8862,
18.4825

■ 75.5896, 80.5696,
93.3851

■ 41.2068, 34.3183,
12.5152

■ 82.0932, 89.6724,
107.5895

■ 38.6506, 30.3623,
8.0985

■ 84.5506, 94.5874,
108.4086

■ 36.5857, 26.9881,
5.0811

■ 34.9681, 24.1620,
3.2802

■ 34.0822, 22.5306,
2.5525

Harmonies

Analogous

The Analogous color harmony consists of three colors that are next to each other on the color wheel.



59.5171, 56.5251, 52.8274



57.0365, 56.5251, 46.9340



53.7512, 56.5251, 44.8698

Triad

The Triadic color harmony groups three colors that are evenly spaced from another and form a triangle on the color wheel.



57.0365, 56.5251, 46.9340



47.5338, 56.5251, 61.4724



56.9900, 56.5251, 79.0015

Complementary

The Complementary color scheme is a pair of colors which are on the opposite of each other on the color wheel.



57.0365, 56.5251, 46.9340



52.0602, 57.3367, 78.8446

Split Complementary

Split-complementary colors differ from the complementary color scheme. The scheme consists of three colors, the original color and two neighbors of the complement color.



53.6996, 56.5251, 81.9141



57.0365, 56.5251, 46.9340



48.3222, 56.5251, 71.1752

Square

The Square scheme is like the rectangle color scheme, but the four colors are evenly spaced on the color wheel.



57.0365, 56.5251, 46.9340



48.3462, 56.5251, 52.7119



50.5450, 56.5251, 78.9143



59.4895, 56.5251, 71.3162

Rectangle

The Rectangle color scheme consists of four colors that form a rectangle on the color wheel.



57.0365, 56.5251, 46.9340



51.5744, 56.5251, 45.7569



50.5450, 56.5251, 78.9143



55.9354, 56.5251, 80.6047

Sweetspot

The Sweet Spot groups the original color and five complimentary colors.



57.0380, 56.5277, 46.9352



88.9038, 92.0947, 93.3260



56.4006, 49.7159, 63.7927



18.9202, 19.5712, 19.7027



0.0000, 0.0000, 0.0000



20.3446, 21.4041, 23.3091

Same Dimension

The Same Dimension uses a secret algorithm to generate beautiful new colors.



57.0380, 56.5277, 46.9352



73.1609, 71.3260, 55.0392



63.2414, 68.9346, 49.0030



14.1374, 14.5607, 14.3722



19.9415, 13.3209, 1.5202



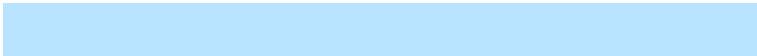
1.4671, 1.0930, 0.1336

Inverse Universe

The Inverse Universe completely reimagines the original color for something new.



52.0602, 57.3367, 78.8446



65.3364, 72.5909, 105.1756



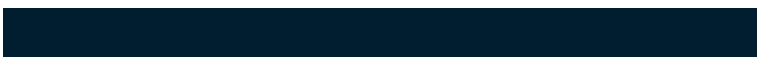
46.4021, 46.0205, 76.9586



13.6507, 14.6405, 17.4941



13.2218, 13.9131, 43.0370



1.0023, 1.1362, 3.0117

Previews

White Background



This preview shows how the XYZ color 57.0365, 56.5251, 46.9340 looks on a white background.

Color Contrast Check

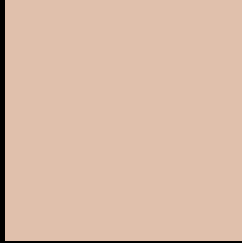
Large Text (above 18pt) WCAG AA × Fail

Any Text WCAG AA × Fail

Large Text (above 18pt) WCAG AAA × Fail

Any Text WCAG AAA × Fail

Black Background



This preview shows how the XYZ color 57.0365, 56.5251, 46.9340 looks on a black background.

Color Contrast Check

Large Text (above 18pt) WCAG AA ✓ Pass

Any Text WCAG AA ✓ Pass

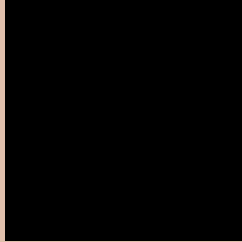
Large Text (above 18pt) WCAG AAA ✓ Pass

Any Text WCAG AAA ✓ Pass

If you want to check with other color combinations, try the [Color Contrast Checker](#).

XYZ 57.0365, 56.5251, 46.9340

Background



This preview shows how black text looks on a background with the XYZ color 57.0365, 56.5251, 46.9340.



This preview shows how white text looks on a background with the XYZ color 57.0365, 56.5251,

46.9340.

Color Blindness Simulation

Color vision deficiency is a very complex topic, and I could not describe the different causes any better than Wikipedia does, so if you want to learn more, you should check out their [article about color blindness](#).

Dichromacy



Original Color

57.0365, 56.5251, 46.9340

Protanopia

53.6641, 56.7487, 48.6826

Deuteranopia

57.7557, 56.5711, 46.9050



Tritanopia

60.6388, 56.7247, 63.6301

Trichromacy



Original Color

57.0365, 56.5251, 46.9340

Protanomaly

54.8205, 56.6820, 48.0958

Deuteranomaly

57.4412, 56.4089, 46.8903

Tritanomaly

59.2801, 56.4877, 57.0690

Monochromacy



Original Color

57.0365, 56.5251, 46.9340

Achromatopsia

54.2854, 57.1125, 62.1955

Achromatomaly

54.9377, 56.5639, 56.1665

CSS Examples

Text

The CSS property to change the color of the text to XYZ 57.0365, 56.5251, 46.9340 is called "color". The color property can be set on classes, ids or directly on the HTML element.

This example shows how text in the color `rgb(224, 192, 172)` looks like.

```
.text, #text, p{  
    color:rgb(224, 192, 172)  
}
```

If you want to add a text shadow in that color use the text-shadow property, you can generate a text shadow directly with our [CSS Text Shadow Generator](#).

Here you see how black text with a 4 pixel rgb(224, 192, 172) colored shadow looks like.

```
.shadow{ text-shadow: 4px 4px 2px rgb(224, 192, 172) }
```

Border

The CSS property to change the border of an element to XYZ 57.0365, 56.5251, 46.9340 is called "border". The border property can be set on classes, ids or directly on the HTML element.

This example shows the color as border, it can be applied via the CSS property "border" or "border-color".

```
.border, #border, table{ border:4px solid rgb(224, 192, 172) }
```


If only the border color should be changed use the property border-color.

```
.border{ border-color:rgb(224, 192, 172) }
```

If you want to add a box shadow in that color use:

Here you see how a box with a 4 pixel rgb(224, 192, 172) colored shadow looks like.

```
.boxshadow{ -moz-box-shadow:4px 4px 4px  
4px rgb(224, 192, 172); -webkit-box-  
shadow:4px 4px 4px 4px rgb(224, 192, 172);  
box-shadow:4px 4px 4px 4px rgb(224, 192,  
172) }
```

Background

The CSS property to change the background color of an element to XYZ 57.0365, 56.5251, 46.9340 is called "background". The background property can be set on classes, ids or directly on the HTML element.

```
.background, #background, body{  
background: rgb(224, 192, 172) }
```

If only the background color should be changed can be used:

```
.background{ background-color: rgb(224,  
192, 172) }
```

This example shows the color as background, it is applied via the CSS property "background".

To optimize and compress your CSS code, you can use our [online CSS compressor and optimizer](#) based on csstidy. If you want to create a linear or radial gradient as background or border, check our [CSS Gradient Generator](#).

Hey! You found this booklet interesting? Support Converting Colors with the new Membership Option!

The pro membership hides all ads, plus gives you double the colors in the color bucket, and more awesome pro features!

[Learn more, Memberships starting at \\$2.50/m!](#)

**Follow me
on Twitter!**

@ConvertingColor