

Converting Colors

XYZ(56.9743, 57.4284, 43.7042)

Have a look what the booklet for
XYZ(56.9743, 57.4284, 43.7042)
contains.

XYZ(57.0471, 57.5941, 43.7074)	3
<i>Conversions</i>	4
<i>Details</i>	6
<i>Harmonies</i>	12
<i>Previews</i>	24
<i>Color Blindness Simulation</i>	28
<i>CSS Examples</i>	31

Color

**XYZ(57.0471, 57.5941,
43.7074)**

Conversions

Conversions Part 1

Format	Color
Hex	E0C3A5
RGB	224, 195, 165
RGB Percent	88%, 76%, 65%
CMY	0.1216, 0.2353, 0.3529
CMYK	0.00, 0.13, 0.26, 0.12
HSL	31°, 49%, 76%
HSV	31°, 26%, 88%
XYZ	57.0471, 57.5941, 43.7074
YIQ	200.2510, 26.9140, -3.1820

Conversions

Conversions Part 2

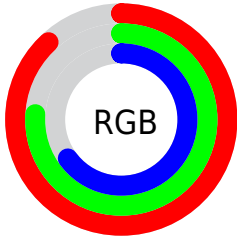
Format	Color
RYP	222, 224, 165
Decimal	14730149
CIELab	80.51, 5.76, 18.87
CIElCh	81, 19.726, 73.021
Yxy	57.5941, 0.3603, 0.3637
Android (android.graphics.Color)	4292920229 (0xFFE0C3A5)
YUV	200.2510, -17.3787, 20.8279
Hunter-Lab	75.8908, 1.3696, 18.9769

Details

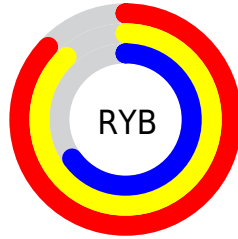
The XYZ color **57.0471, 57.5941, 43.7074** is a light color, and the websafe version is hex **FFCC99**. A complement of this color would be **48.2630, 51.9633, 78.0074**, and the grayscale version is **55.1478, 58.0198, 63.1835**.

A 20% lighter version of the original color is **88.9687, 96.0481, 81.5601**, and **28.6540, 28.5668, 19.6265** is the 20% darker color. If you saturate the color by 10%, you get **52.8083, 52.0982, 33.1013**, and if you desaturate by 10%, it is **61.8280, 63.6018, 56.2572**.

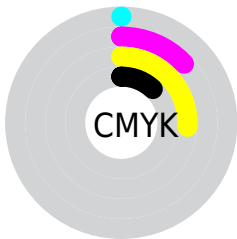
Distribution



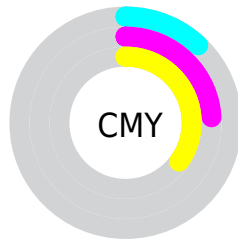
- Red (88%)
- Green (76%)
- Blue (65%)



- Red (87%)
- Yellow (88%)
- Blue (65%)



- Cyan (0%)
- Magenta (13%)
- Yellow (26%)
- Black (12%)





- Cyan (12%)
- Magenta (24%)
- Yellow (35%)

Brightness & Saturation Gradients


These gradients show how the XYZ color 57.0471, 57.5941, 43.7074 changes by changing the brightness by 10 percent. The first figure shows a shift by +10% for each color and the second figure -10%.


Similar to the brightness gradients but the following saturation gradients show a change of the XYZ color 57.0471, 57.5941, 43.7074 by changing the saturation by 10% instead.


 57.0471, 57.5941,
43.7074


 57.0471, 57.5941,
43.7074


403.6371,
415.6718, 377.5193

 41.2833, 41.4824,
30.1050


 99.6649, 101.3315,
82.0750

 28.7292, 28.6962,
19.6656


 127.2496,
129.7261, 107.6774

 19.0193, 18.8511,
11.9705


159.5054,
162.9837, 138.1169

 11.7883, 11.5628,
6.6013

196.7975,
201.4888, 173.8119

 6.6709, 6.4467,
3.1394

239.4914,
245.6258, 215.1812

 3.3016, 3.1186,
1.1663

287.9524,

 1.3152, 1.1939,

295.7790, 262.6431

0.0000

342.5458,
352.3328, 316.6163

■ 0.1946, 0.0567,
0.0000

■ 0.0000, 0.0000,
0.0000

■ 57.0471, 57.5941,
43.7074

■ 57.0471, 57.5941,
43.7074

■ 52.8083, 52.0982,
33.1013

■ 61.8280, 63.6018,
56.2572

■ 49.0844, 47.0911,
24.3360

■ 67.1674, 70.1279,
70.8393

■ 45.8527, 42.5591,
17.3042

■ 73.0867, 77.1888,
87.5411

■ 43.0864, 38.4850,
11.8863

■ 79.6045, 84.7978,
106.4440

■ 40.7559, 34.8499,
7.9470

■ 82.9910, 91.4683,
107.8888

■ 38.8270, 31.6328,
5.3283

■ 84.5506, 94.5873,
108.4086

■ 37.2576, 28.8096,
3.8326

■ 36.7484, 27.8630,
3.4412

Harmonies

Analogous

The Analogous color harmony consists of three colors that are next to each other on the color wheel.



60.6343, 57.5941, 48.6919



57.0471, 57.5941, 43.7074



53.0056, 57.5941, 43.3948

Triad

The Triadic color harmony groups three colors that are evenly spaced from another and form a triangle on the color wheel.



57.0471, 57.5941, 43.7074



47.4997, 57.5941, 67.8704



60.2281, 57.5941, 80.4690

Complementary

The Complementary color scheme is a pair of colors which are on the opposite of each other on the color wheel.



57.0471, 57.5941, 43.7074



48.2630, 51.9633, 78.0074

Split Complementary

Split-complementary colors differ from the complementary color scheme. The scheme consists of three colors, the original color and two neighbors of the complement color.



56.5148, 57.5941, 87.0447



57.0471, 57.5941, 43.7074



49.2434, 57.5941, 79.1898

Square

The Square scheme is like the rectangle color scheme, but the four colors are evenly spaced on the color wheel.



57.0471, 57.5941, 43.7074



47.6264, 57.5941, 56.4205



52.4988, 57.5941, 86.5496



62.5320, 57.5941, 69.4508

Rectangle

The Rectangle color scheme consists of four colors that form a rectangle on the color wheel.



57.0471, 57.5941, 43.7074



50.6066, 57.5941, 45.8079



52.4988, 57.5941, 86.5496



59.0956, 57.5941, 83.3298

Sweetspot

The Sweet Spot groups the original color and five complimentary colors.



57.0486, 57.5967, 43.7086



88.8223, 92.5244, 91.4722



53.9900, 46.6758, 57.4982



18.7730, 19.5143, 18.9215



0.0000, 0.0000, 0.0000



20.3446, 21.4041, 23.3091

Same Dimension

The Same Dimension uses a secret algorithm to generate beautiful new colors.



57.0486, 57.5967, 43.7086



73.0960, 72.8415, 49.9456



64.1880, 71.8755, 46.0884



14.2806, 14.8471, 14.4199



21.5056, 16.4491, 2.0415



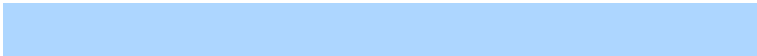
1.5802, 1.3193, 0.1714

Inverse Universe

The Inverse Universe completely reimagines the original color for something new.



48.2630, 51.9633, 78.0074



59.2929, 63.9914, 103.8342



42.4274, 40.2922, 76.0623



13.5055, 14.3501, 17.4457



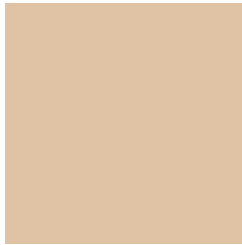
11.1970, 9.8635, 42.3621



0.8656, 0.8626, 2.9661

Previews

White Background



This preview shows how the XYZ color 57.0471, 57.5941, 43.7074 looks on a white background.

Color Contrast Check

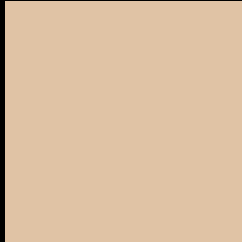
Large Text (above 18pt) WCAG AA × Fail

Any Text WCAG AA × Fail

Large Text (above 18pt) WCAG AAA × Fail

Any Text WCAG AAA × Fail

Black Background



This preview shows how the XYZ color 57.0471, 57.5941, 43.7074 looks on a black background.

Color Contrast Check

Large Text (above 18pt) WCAG AA ✓ Pass

Any Text WCAG AA ✓ Pass

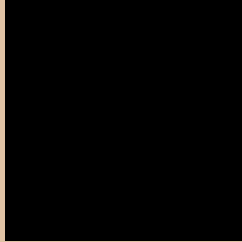
Large Text (above 18pt) WCAG AAA ✓ Pass

Any Text WCAG AAA ✓ Pass

If you want to check with other color combinations, try the [Color Contrast Checker](#).

XYZ 57.0471, 57.5941, 43.7074

Background



This preview shows how black text looks on a background with the XYZ color 57.0471, 57.5941, 43.7074.



This preview shows how white text looks on a background with the XYZ color 57.0471, 57.5941,

Color Blindness Simulation

Color vision deficiency is a very complex topic, and I could not describe the different causes any better than Wikipedia does, so if you want to learn more, you should check out their [article about color blindness](#).

Dichromacy



Original Color

57.0471, 57.5941, 43.7074

Protanopia

54.2624, 57.4858, 44.7951

Deuteranopia

58.6876, 57.4414, 44.0705



Tritanopia

61.4098, 57.4128, 64.9719

Trichromacy



Original Color

57.0471, 57.5941, 43.7074

Protanomaly

55.3959, 57.7403, 44.3017

Deuteranomaly

57.9478, 57.3871, 44.0990

Tritanomaly

59.6036, 57.3102, 56.6357

Monochromacy



Original Color

57.0471, 57.5941, 43.7074

Achromatopsia

54.8990, 57.7580, 62.8985

Achromatomaly

55.4582, 57.5313, 55.1954

CSS Examples

Text

The CSS property to change the color of the text to XYZ 57.0471, 57.5941, 43.7074 is called "color". The color property can be set on classes, ids or directly on the HTML element.

This example shows how text in the color rgb(224, 195, 165) looks like.

```
.text, #text, p{  
    color:rgb(224, 195, 165)  
}
```

If you want to add a text shadow in that color use the text-shadow property, you can generate a text shadow directly with our [CSS Text Shadow Generator](#).

Here you see how black text with a 4 pixel rgb(224, 195, 165) colored shadow looks like.

```
.shadow{ text-shadow: 4px 4px 2px rgb(224, 195, 165) }
```

Border

The CSS property to change the border of an element to XYZ 57.0471, 57.5941, 43.7074 is called "border". The border property can be set on classes, ids or directly on the HTML element.

This example shows the color as border, it can be applied via the CSS property "border" or "border-color".

```
.border, #border, table{ border:4px solid rgb(224, 195, 165) }
```


If only the border color should be changed use the property `border-color`.

```
.border{ border-color:rgb(224, 195, 165) }
```

If you want to add a box shadow in that color use:

Here you see how a box with a 4 pixel `rgb(224, 195, 165)` colored shadow looks like.

```
.boxshadow{ -moz-box-shadow:4px 4px 4px 4px rgb(224, 195, 165); -webkit-box-shadow:4px 4px 4px 4px rgb(224, 195, 165); box-shadow:4px 4px 4px 4px rgb(224, 195, 165) }
```

Background

The CSS property to change the background color of an element to XYZ 57.0471, 57.5941, 43.7074 is called "background". The background property can be set on classes, ids or directly on the HTML element.

```
.background, #background, body{  
background: rgb(224, 195, 165) }
```

If only the background color should be changed can be used:

```
.background{ background-color: rgb(224,  
195, 165) }
```

This example shows the color as background, it is applied via the CSS property "background".

To optimize and compress your CSS code, you can use our [online CSS compressor and optimizer](#) based on csstidy. If you want to create a linear or radial gradient as background or border, check our [CSS Gradient Generator](#).

Hey! You found this booklet interesting? Support Converting Colors with the new Membership Option!

The pro membership hides all ads, plus gives you double the colors in the color bucket, and more awesome pro features!

[Learn more, Memberships starting at \\$2.50/m!](#)

**Follow me
on Twitter!**

@ConvertingColor