

Converting Colors

XYZ(56.9988, 52.9653, 55.3045)

Have a look what the booklet for
XYZ(56.9988, 52.9653, 55.3045)
contains.

XYZ(57.0732, 52.8906, 55.3449)	3
<i>Conversions</i>	4
<i>Details</i>	6
<i>Harmonies</i>	12
<i>Previews</i>	24
<i>Color Blindness Simulation</i>	28
<i>CSS Examples</i>	31

Color

**XYZ(57.0732, 52.8906,
55.3449)**

Conversions

Conversions Part 1

Format	Color
Hex	E2B5BD
RGB	226, 181, 189
RGB Percent	89%, 71%, 74%
CMY	0.1137, 0.2902, 0.2588
CMYK	0.00, 0.20, 0.16, 0.11
HSL	349°, 44%, 80%
HSV	349°, 20%, 89%
XYZ	57.0732, 52.8906, 55.3449
YIQ	195.3670, 24.2520, 12.0280

Conversions

Conversions Part 2

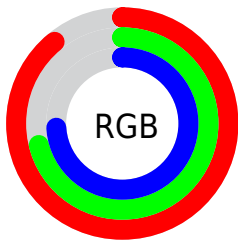
Format	Color
R _Y B	226, 181, 189
Decimal	14857661
CIE Lab	77.81, 17.47, 2.13
CIE LCh	78, 17.601, 6.946
Yxy	52.8906, 0.3453, 0.3200
Android (android.graphics.Color)	4293047741 (0xFFE2B5BD)
YUV	195.3670, -3.1389, 26.8651
Hunter-Lab	72.7259, 12.8113, 5.7881

Details

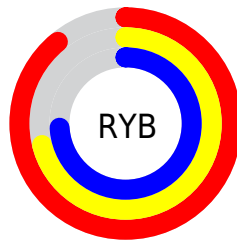
The XYZ color **57.0732, 52.8906, 55.3449** is a light color, and the websafe version is hex **FFCCCC**. A complement of this color would be **58.9094, 69.2797, 76.6005**, and the grayscale version is **52.0998, 54.8131, 59.6914**.

A 20% lighter version of the original color is **88.0056, 88.4209, 98.8148**, and **28.7407, 25.7620, 26.7503** is the 20% darker color. If you saturate the color by 10%, you get **50.9556, 43.6792, 43.9827**, and if you desaturate by 10%, it is **64.1977, 63.7010, 68.3192**.

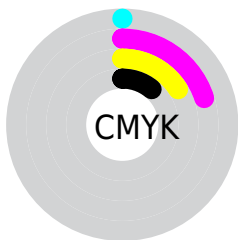
Distribution



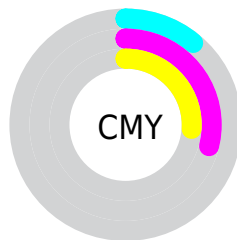
- Red (89%)
- Green (71%)
- Blue (74%)



- Red (89%)
- Yellow (71%)
- Blue (74%)



- Cyan (0%)
- Magenta (20%)
- Yellow (16%)
- Black (11%)



- Cyan (11%)
- Magenta (29%)
- Yellow (26%)

Brightness & Saturation Gradients

These gradients show how the XYZ color 57.0732, 52.8906, 55.3449 changes by changing the brightness by 10 percent. The first figure shows a shift by +10% for each color and the second figure -10%.

Similar to the brightness gradients but the following saturation gradients show a change of the XYZ color 57.0732, 52.8906, 55.3449 by changing the saturation by 10% instead.

57.0732, 52.8906,
55.3449

57.0732, 52.8906,
55.3449

403.7333,
397.8653, 424.5367

41.3044, 37.7154,
39.2775

99.7027, 94.4434,
99.5223

28.7457, 25.7619,
26.6662

127.2942,
121.5898, 128.4694

19.0319, 16.6456,
17.0924

159.5572,
153.4954, 162.5467

11.7974, 9.9821,
10.1378

196.8571,
190.5446, 202.1729

6.6771, 5.3871,
5.3836

239.5593,
233.1218, 247.7665

3.3055, 2.4761,
2.4114

288.0292,

1.3173, 0.8647,

281.6114, 299.7459

0.7926

342.6321,
336.3977, 358.5298

■ 0.1961, 0.0000,
0.0000

■ 0.0000, 0.0000,
0.0000

■ 57.0732, 52.8906,
55.3449

■ 57.0732, 52.8906,
55.3449

■ 50.9556, 43.6792,
43.9827

■ 64.1977, 63.7010,
68.3192

■ 45.7949, 35.9839,
34.1661

■ 72.3673, 76.1737,
82.9621

■ 41.5432, 29.7253,
25.8287

■ 81.6237, 90.3776,
99.3314

■ 38.1470, 24.8138,
18.8978

■ 85.1743, 94.9089,
108.4378

■ 35.5468, 21.1498,
13.2948

■ 33.6754, 18.6196,
8.9326

■ 32.4540, 17.0888,
5.7139

■ 31.7551, 16.3288,
3.5151

■ 31.7500, 16.3232,
3.4991

Harmonies

Analogous

The Analogous color harmony consists of three colors that are next to each other on the color wheel.



56.5566, 52.8906, 65.2695



57.0732, 52.8906, 55.3449



55.7022, 52.8906, 47.0112

Triad

The Triadic color harmony groups three colors that are evenly spaced from another and form a triangle on the color wheel.



57.0732, 52.8906, 55.3449



46.4274, 52.8906, 43.8319



47.7438, 52.8906, 76.6786

Complementary

The Complementary color scheme is a pair of colors which are on the opposite of each other on the color wheel.



57.0732, 52.8906, 55.3449



58.9094, 69.2797, 76.6005

Split Complementary

Split-complementary colors differ from the complementary color scheme. The scheme consists of three colors, the original color and two neighbors of the complement color.



45.2047, 52.8906, 69.6449



57.0732, 52.8906, 55.3449



44.4691, 52.8906, 50.5357

Square

The Square scheme is like the rectangle color scheme, but the four colors are evenly spaced on the color wheel.



57.0732, 52.8906, 55.3449



49.4812, 52.8906, 40.8692



44.0318, 52.8906, 59.8927



51.0690, 52.8906, 78.3407

Rectangle

The Rectangle color scheme consists of four colors that form a rectangle on the color wheel.



57.0732, 52.8906, 55.3449



53.9372, 52.8906, 43.2242



44.0318, 52.8906, 59.8927



46.7746, 52.8906, 74.8283

Sweetspot

The Sweet Spot groups the original color and five complimentary colors.



57.0747, 52.8930, 55.3460



88.4019, 89.8397, 97.0161



59.0918, 53.4081, 79.1464



18.7734, 19.0032, 20.4991



0.0000, 0.0000, 0.0000



20.3446, 21.4041, 23.3091

Same Dimension

The Same Dimension uses a secret algorithm to generate beautiful new colors.



57.0747, 52.8930, 55.3460



71.4676, 64.1467, 66.1672



59.2774, 58.6494, 51.9152



13.8062, 13.7401, 14.7495



18.1440, 9.3246, 2.1584



1.2874, 0.6582, 0.3064

Inverse Universe

The Inverse Universe completely reimagines the original color for something new.



57.0747, 52.8930, 55.3460



71.4676, 64.1467, 66.1672



56.2665, 62.2786, 81.0075



13.8062, 13.7401, 14.7495



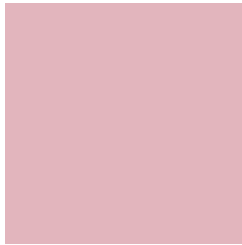
18.1440, 9.3246, 2.1584



1.2874, 0.6582, 0.3064

Previews

White Background



This preview shows how the XYZ color 57.0732, 52.8906, 55.3449 looks on a white background.

Color Contrast Check

Large Text (above 18pt) WCAG AA × Fail

Any Text WCAG AA × Fail

Large Text (above 18pt) WCAG AAA × Fail

Any Text WCAG AAA × Fail

Black Background



This preview shows how the XYZ color 57.0732, 52.8906, 55.3449 looks on a black background.

Color Contrast Check

Large Text (above 18pt) WCAG AA ✓ Pass

Any Text WCAG AA ✓ Pass

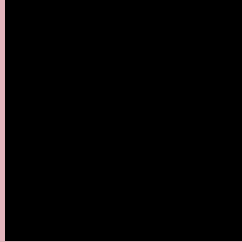
Large Text (above 18pt) WCAG AAA ✓ Pass

Any Text WCAG AAA ✓ Pass

If you want to check with other color combinations, try the [Color Contrast Checker](#).

XYZ 57.0732, 52.8906, 55.3449

Background



This preview shows how black text looks on a background with the XYZ color 57.0732, 52.8906, 55.3449.



This preview shows how white text looks on a background with the XYZ color 57.0732, 52.8906,

55.3449.

Color Blindness Simulation

Color vision deficiency is a very complex topic, and I could not describe the different causes any better than Wikipedia does, so if you want to learn more, you should check out their [article about color blindness](#).

Dichromacy



Original Color

57.0732, 52.8906, 55.3449

Protanopia

51.2056, 53.2415, 59.2076

Deuteranopia

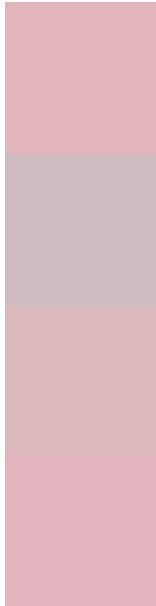
54.0766, 52.8948, 54.9365



Tritanopia

57.7374, 52.8685, 58.2005

Trichromacy



Original Color

57.0732, 52.8906, 55.3449

Protanomaly

53.0625, 52.9385, 57.8735

Deuteranomaly

55.1310, 52.8172, 54.8660

Tritanomaly

57.5142, 52.7792, 57.0252

Monochromacy



Original Color

57.0732, 52.8906, 55.3449

Achromatopsia

51.8711, 54.5724, 59.4294

Achromatomaly

53.4927, 53.7990, 58.0169

CSS Examples

Text

The CSS property to change the color of the text to XYZ 57.0732, 52.8906, 55.3449 is called "color". The color property can be set on classes, ids or directly on the HTML element.

This example shows how text in the color `rgb(226, 181, 189)` looks like.

```
.text, #text, p{  
    color:rgb(226, 181, 189)  
}
```

If you want to add a text shadow in that color use the text-shadow property, you can generate a text shadow directly with our [CSS Text Shadow Generator](#).

Here you see how black text with a 4 pixel rgb(226, 181, 189) colored shadow looks like.

```
.shadow{ text-shadow: 4px 4px 2px rgb(226, 181, 189) }
```

Border

The CSS property to change the border of an element to XYZ 57.0732, 52.8906, 55.3449 is called "border". The border property can be set on classes, ids or directly on the HTML element.

This example shows the color as border, it can be applied via the CSS property "border" or "border-color".

```
.border, #border, table{ border:4px solid rgb(226, 181, 189) }
```


If only the border color should be changed use the property `border-color`.

```
.border{ border-color:rgb(226, 181, 189) }
```

If you want to add a box shadow in that color use:

Here you see how a box with a 4 pixel `rgb(226, 181, 189)` colored shadow looks like.

```
.boxshadow{ -moz-box-shadow:4px 4px 4px 4px rgb(226, 181, 189); -webkit-box-shadow:4px 4px 4px 4px rgb(226, 181, 189); box-shadow:4px 4px 4px 4px rgb(226, 181, 189) }
```

Background

The CSS property to change the background color of an element to XYZ 57.0732, 52.8906, 55.3449 is called "background". The background property can be set on classes, ids or directly on the HTML element.

```
.background, #background, body{  
background: rgb(226, 181, 189) }
```

If only the background color should be changed can be used:

```
.background{ background-color: rgb(226,  
181, 189) }
```

This example shows the color as background, it is applied via the CSS property "background".

To optimize and compress your CSS code, you can use our [online CSS compressor and optimizer](#) based on csstidy. If you want to create a linear or radial gradient as background or border, check our [CSS Gradient Generator](#).

Hey! You found this booklet interesting? Support Converting Colors with the new Membership Option!

The pro membership hides all ads, plus gives you double the colors in the color bucket, and more awesome pro features!

[Learn more, Memberships starting at \\$2.50/m!](#)

**Follow me
on Twitter!**

@ConvertingColor