

Converting Colors

XYZ(57.0015, 58.0542, 59.7412)

Have a look what the booklet for
XYZ(57.0015, 58.0542, 59.7412)
contains.

XYZ(56.9680, 57.8697, 59.7972)	3
<i>Conversions</i>	4
<i>Details</i>	6
<i>Harmonies</i>	12
<i>Previews</i>	24
<i>Color Blindness Simulation</i>	28
<i>CSS Examples</i>	31

Color

**XYZ(56.9680, 57.8697,
59.7972)**

Conversions

Conversions Part 1

Format	Color
Hex	D4C5C3
RGB	212, 197, 195
RGB Percent	83%, 77%, 76%
CMY	0.1686, 0.2274, 0.2353
CMYK	0.00, 0.07, 0.08, 0.17
HSL	7°, 17%, 80%
HSV	7°, 8%, 83%
XYZ	56.9680, 57.8697, 59.7972
YIQ	201.2570, 9.5820, 2.5580

Conversions

Conversions Part 2

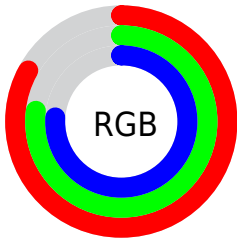
Format	Color
R _Y B	212, 197, 195
Decimal	13944259
CIE Lab	80.67, 4.90, 2.88
CIE LCh	81, 5.687, 30.452
Yxy	57.8697, 0.3262, 0.3314
Android (android.graphics.Color)	4292134339 (0xFFD4C5C3)
YUV	201.2570, -3.0847, 9.4216
Hunter-Lab	76.0721, 0.5467, 6.6450

Details

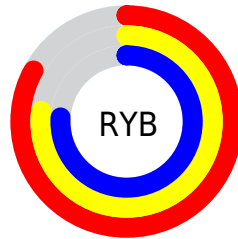
The XYZ color **56.9680, 57.8697, 59.7972** is a light color, and the websafe version is hex **CCCCCC**. A complement of this color would be **57.4358, 62.4478, 71.3146**, and the grayscale version is **55.6925, 58.5928, 63.8076**.

A 20% lighter version of the original color is **94.2525, 99.1719, 106.2699**, and **28.5348, 28.7361, 29.2420** is the 20% darker color. If you saturate the color by 10%, you get **50.7532, 49.0073, 46.7273**, and if you desaturate by 10%, it is **64.0532, 67.9270, 74.8377**.

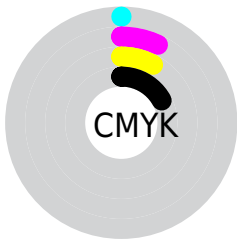
Distribution



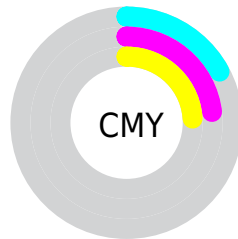
- Red (83%)
- Green (77%)
- Blue (76%)



- Red (83%)
- Yellow (77%)
- Blue (76%)



- Cyan (0%)
- Magenta (7%)
- Yellow (8%)
- Black (17%)



- Cyan (17%)
- Magenta (23%)
- Yellow (24%)

Brightness & Saturation Gradients

These gradients show how the XYZ color 56.9680, 57.8697, 59.7972 changes by changing the brightness by 10 percent. The first figure shows a shift by +10% for each color and the second figure -10%.

Similar to the brightness gradients but the following saturation gradients show a change of the XYZ color 56.9680, 57.8697, 59.7972 by changing the saturation by 10% instead.

■ 56.9680, 57.8697,
59.7972

■ 56.9680, 57.8697,
59.7972

403.3455,
416.7002, 441.6337

■ 41.2196, 41.7039,
42.8310

■ 99.5501, 101.7331,
106.0759

■ 28.6791, 28.8695,
29.4221

127.1145,
130.1995, 136.2255

■ 18.9813, 18.9821,
19.1520

159.3483,
163.5348, 171.6066

■ 11.7607, 11.6574,
11.6023

196.6169,
202.1236, 212.6377

■ 6.6520, 6.5108,
6.3542

239.2855,
246.3501, 259.7375

■ 3.2898, 3.1581,
2.9894

287.7196,

■ 1.3088, 1.2148,

296.5988, 313.3243

1.0892

342.2845,
353.2540, 373.8169

■ 0.1898, 0.0738,
0.0000

■ 0.0000, 0.0000,
0.0000

■ 56.9680, 57.8697,
59.7972

■ 56.9680, 57.8697,
59.7972

■ 50.7532, 49.0073,
46.7273

■ 64.0532, 67.9270,
74.8377

■ 45.3706, 41.2879,
35.5427

■ 72.0356, 79.2133,
91.9218

■ 40.7860, 34.6674,
26.1573

■ 80.3615, 91.5368,
108.0406

■ 36.9612, 29.0955,
18.4772

■ 80.9617, 92.7372,
108.2407

■ 33.8549, 24.5184,
12.3996

■ 31.4216, 20.8772,
7.8106

■ 29.6106, 18.1068,
4.5816

■ 28.3639, 16.1338,
2.5617

■ 27.6066, 14.8702,
1.5358

Harmonies

Analogous

The Analogous color harmony consists of three colors that are next to each other on the color wheel.



57.2866, 57.8697, 62.9594



56.9680, 57.8697, 59.7972



56.1217, 57.8697, 57.5636

Triad

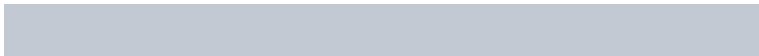
The Triadic color harmony groups three colors that are evenly spaced from another and form a triangle on the color wheel.



56.9680, 57.8697, 59.7972



53.0672, 57.8697, 59.8824



55.0212, 57.8697, 69.6833

Complementary

The Complementary color scheme is a pair of colors which are on the opposite of each other on the color wheel.



56.9680, 57.8697, 59.7972



57.4358, 62.4478, 71.3146

Split Complementary

Split-complementary colors differ from the complementary color scheme. The scheme consists of three colors, the original color and two neighbors of the complement color.



53.9001, 57.8697, 68.7902



56.9680, 57.8697, 59.7972



52.7817, 57.8697, 63.0612

Square

The Square scheme is like the rectangle color scheme, but the four colors are evenly spaced on the color wheel.



56.9680, 57.8697, 59.7972



53.8698, 57.8697, 57.6115



53.0845, 57.8697, 66.3364



56.1529, 57.8697, 68.7362

Rectangle

The Rectangle color scheme consists of four colors that form a rectangle on the color wheel.



56.9680, 57.8697, 59.7972



55.3779, 57.8697, 56.8607



53.0845, 57.8697, 66.3364



54.6307, 57.8697, 69.5880

Sweetspot

The Sweet Spot groups the original color and five complimentary colors.



56.9696, 57.8722, 59.7984



92.8212, 96.8389, 104.1599



58.3022, 57.6821, 69.0454



19.8909, 20.7607, 22.3441



0.0000, 0.0000, 0.0000



20.3446, 21.4041, 23.3091

Same Dimension

The Same Dimension uses a secret algorithm to generate beautiful new colors.



56.9696, 57.8722, 59.7984



84.4519, 84.9434, 86.4399



58.9496, 61.8323, 60.4584



12.5400, 12.6542, 12.9423



17.0145, 9.1463, 0.8686



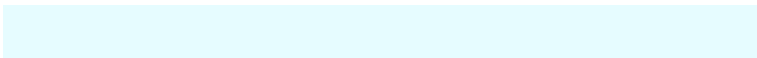
1.0665, 0.6321, 0.0658

Inverse Universe

The Inverse Universe completely reimagines the original color for something new.



57.4358, 62.4478, 71.3146



85.3315, 93.5777, 108.1726



55.3975, 58.3710, 70.6351



12.6614, 13.8463, 15.9428



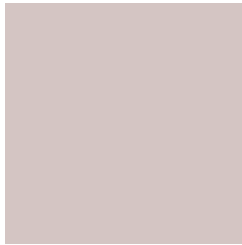
18.3568, 24.9755, 42.3064



1.1433, 1.5787, 2.5638

Previews

White Background



This preview shows how the XYZ color 56.9680, 57.8697, 59.7972 looks on a white background.

Color Contrast Check

Large Text (above 18pt) WCAG AA × Fail

Any Text WCAG AA × Fail

Large Text (above 18pt) WCAG AAA × Fail

Any Text WCAG AAA × Fail

Black Background



This preview shows how the XYZ color 56.9680, 57.8697, 59.7972 looks on a black background.

Color Contrast Check

Large Text (above 18pt) WCAG AA ✓ Pass

Any Text WCAG AA ✓ Pass

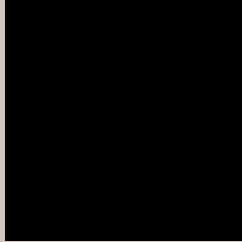
Large Text (above 18pt) WCAG AAA ✓ Pass

Any Text WCAG AAA ✓ Pass

If you want to check with other color combinations, try the [Color Contrast Checker](#).

XYZ 56.9680, 57.8697, 59.7972

Background



This preview shows how black text looks on a background with the XYZ color 56.9680, 57.8697, 59.7972.



This preview shows how white text looks on a background with the XYZ color 56.9680, 57.8697,

Color Blindness Simulation

Color vision deficiency is a very complex topic, and I could not describe the different causes any better than Wikipedia does, so if you want to learn more, you should check out their [article about color blindness](#).

Dichromacy



Original Color

56.9680, 57.8697, 59.7972

Protanopia

55.5641, 57.8115, 60.4547

Deuteranopia

59.0744, 57.9412, 60.2948



Tritanopia

58.8795, 57.9795, 69.0606

Trichromacy



Original Color

56.9680, 57.8697, 59.7972

Protanomaly

56.1703, 57.7836, 60.4174

Deuteranomaly

58.3924, 57.9212, 60.3268

Tritanomaly

58.1999, 58.0338, 65.8918

Monochromacy



Original Color

56.9680, 57.8697, 59.7972

Achromatopsia

55.5167, 58.4078, 63.6061

Achromatomaly

56.1399, 58.4112, 62.3484

CSS Examples

Text

The CSS property to change the color of the text to XYZ 56.9680, 57.8697, 59.7972 is called "color". The color property can be set on classes, ids or directly on the HTML element.

This example shows how text in the color rgb(212, 197, 195) looks like.

```
.text, #text, p{  
    color:rgb(212, 197, 195)  
}
```

If you want to add a text shadow in that color use the text-shadow property, you can generate a text shadow directly with our [CSS Text Shadow Generator](#).

Here you see how black text with a 4 pixel rgb(212, 197, 195) colored shadow looks like.

```
.shadow{ text-shadow: 4px 4px 2px rgb(212, 197, 195) }
```

Border

The CSS property to change the border of an element to XYZ 56.9680, 57.8697, 59.7972 is called "border". The border property can be set on classes, ids or directly on the HTML element.

This example shows the color as border, it can be applied via the CSS property "border" or "border-color".

```
.border, #border, table{ border:4px solid rgb(212, 197, 195) }
```


If only the border color should be changed use the property `border-color`.

```
.border{ border-color:rgb(212, 197, 195) }
```

If you want to add a box shadow in that color use:

Here you see how a box with a 4 pixel `rgb(212, 197, 195)` colored shadow looks like.

```
.boxshadow{ -moz-box-shadow:4px 4px 4px  
4px rgb(212, 197, 195); -webkit-box-  
shadow:4px 4px 4px 4px rgb(212, 197, 195);  
box-shadow:4px 4px 4px 4px rgb(212, 197,  
195) }
```

Background

The CSS property to change the background color of an element to XYZ 56.9680, 57.8697, 59.7972 is called "background". The background property can be set on classes, ids or directly on the HTML element.

```
.background, #background, body{  
background: rgb(212, 197, 195) }
```

If only the background color should be changed can be used:

```
.background{ background-color: rgb(212,  
197, 195) }
```

This example shows the color as background, it is applied via the CSS property "background".

To optimize and compress your CSS code, you can use our [online CSS compressor and optimizer](#) based on csstidy. If you want to create a linear or radial gradient as background or border, check our [CSS Gradient Generator](#).

Hey! You found this booklet interesting? Support Converting Colors with the new Membership Option!

The pro membership hides all ads, plus gives you double the colors in the color bucket, and more awesome pro features!

[Learn more, Memberships starting at \\$2.50/m!](#)

**Follow me
on Twitter!**

@ConvertingColor