

Converting Colors

XYZ(57.0053, 55.8178, 59.6079)

Have a look what the booklet for
XYZ(57.0053, 55.8178, 59.6079)
contains.

XYZ(57.0964, 55.9534, 59.4205)	3
<i>Conversions</i>	4
<i>Details</i>	6
<i>Harmonies</i>	12
<i>Previews</i>	24
<i>Color Blindness Simulation</i>	28
<i>CSS Examples</i>	31

Color

**XYZ(57.0964, 55.9534,
59.4205)**

Conversions

Conversions Part 1

Format	Color
Hex	D9BFC3
RGB	217, 191, 195
RGB Percent	85%, 75%, 76%
CMY	0.1490, 0.2510, 0.2353
CMYK	0.00, 0.12, 0.10, 0.15
HSL	351°, 25%, 80%
HSV	351°, 12%, 85%
XYZ	57.0964, 55.9534, 59.4205
YIQ	199.2300, 14.2120, 6.7560

Conversions

Conversions Part 2

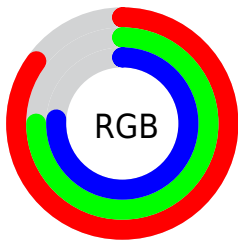
Format	Color
R _Y B	217, 191, 195
Decimal	14270403
CIE Lab	79.59, 9.87, 1.37
CIE LCh	80, 9.964, 7.884
Yxy	55.9534, 0.3311, 0.3244
Android (android.graphics.Color)	4292460483 (0xFFD9BFC3)
YUV	199.2300, -2.0854, 15.5843
Hunter-Lab	74.8020, 5.3456, 5.2632

Details

The XYZ color **57.0964, 55.9534, 59.4205** is a light color, and the websafe version is hex **CCCCCC**. A complement of this color would be **58.3111, 65.5076, 72.5249**, and the grayscale version is **54.4344, 57.2693, 62.3662**.

A 20% lighter version of the original color is **92.0715, 94.8098, 105.5429**, and **28.7965, 27.7814, 29.0439** is the 20% darker color. If you saturate the color by 10%, you get **50.7600, 46.4013, 47.6865**, and if you desaturate by 10%, it is **64.3925, 67.0149, 72.7356**.

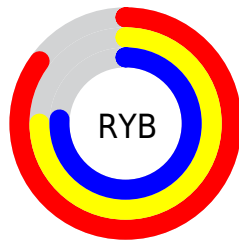
Distribution



Red (85%)

Green (75%)

Blue (76%)



Red (85%)

Yellow (75%)

Blue (76%)

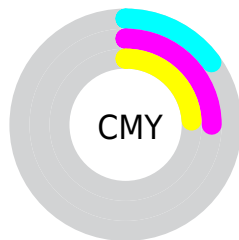


Cyan (0%)

Magenta (12%)

Yellow (10%)

Black (15%)



Cyan (15%)


Magenta (25%)


Yellow (24%)

Brightness & Saturation Gradients

These gradients show how the XYZ color 57.0964, 55.9534, 59.4205 changes by changing the brightness by 10 percent. The first figure shows a shift by +10% for each color and the second figure -10%.


Similar to the brightness gradients but the following saturation gradients show a change of the XYZ color 57.0964, 55.9534, 59.4205 by changing the saturation by 10% instead.


 57.0964, 55.9534,
59.4205

 57.0964, 55.9534,
59.4205


403.8188,
409.5159, 440.2036

 41.3231, 40.1656,
42.5295


 99.7364, 98.9364,
105.5237

 28.7604, 27.6677,
29.1874


127.3338,
126.9004, 135.5729

 19.0430, 18.0753,
18.9759


159.6032,
159.6919, 170.8454

 11.8056, 11.0040,
11.4762

196.9101,
197.6953, 211.7595

 6.6827, 6.0696,
6.2699

239.6197,
241.2950, 258.7338

 3.3090, 2.8874,
2.9385

288.0974,

 1.3192, 1.0732,

290.8754, 312.1869

1.0633

342.7087,
346.8209, 372.5373

■ 0.1975, 0.0000,
0.0000

■ 0.0000, 0.0000,
0.0000

■ 57.0964, 55.9534,
59.4205

■ 57.0964, 55.9534,
59.4205

■ 50.7600, 46.4013,
47.6865

■ 64.3925, 67.0149,
72.7356

■ 45.3387, 38.2860,
37.4713

■ 72.6811, 79.6394,
87.6841

■ 40.7911, 31.5400,
28.7135

■ 81.6457, 93.1799,
104.2022

■ 37.0712, 26.0876,
21.3462

■ 82.4256, 93.4919,
108.3092

■ 34.1283, 21.8457,
15.2972

■ 31.9063, 18.7215,
10.4879

■ 30.3413, 16.6085,
6.8309

■ 29.3577, 15.3795,
4.2270

■ 28.8952, 14.8637,
2.8113

Harmonies

Analogous

The Analogous color harmony consists of three colors that are next to each other on the color wheel.



56.8374, 55.9534, 65.1795



57.0964, 55.9534, 59.4205



56.2859, 55.9534, 54.3868

Triad

The Triadic color harmony groups three colors that are evenly spaced from another and form a triangle on the color wheel.



57.0964, 55.9534, 59.4205



50.8476, 55.9534, 52.6116



51.7425, 55.9534, 71.7454

Complementary

The Complementary color scheme is a pair of colors which are on the opposite of each other on the color wheel.



57.0964, 55.9534, 59.4205



58.3111, 65.5076, 72.5249

Split Complementary

Split-complementary colors differ from the complementary color scheme. The scheme consists of three colors, the original color and two neighbors of the complement color.



50.1944, 55.9534, 67.9646



57.0964, 55.9534, 59.4205



49.6869, 55.9534, 56.8573

Square

The Square scheme is like the rectangle color scheme, but the four colors are evenly spaced on the color wheel.



57.0964, 55.9534, 59.4205



52.6545, 55.9534, 50.6201



49.4508, 55.9534, 62.4521



53.7131, 55.9534, 72.5385

Rectangle

The Rectangle color scheme consists of four colors that form a rectangle on the color wheel.



57.0964, 55.9534, 59.4205



55.2599, 55.9534, 52.0353



49.4508, 55.9534, 62.4521



51.1569, 55.9534, 70.7708

Sweetspot

The Sweet Spot groups the original color and five complimentary colors.



57.0980, 55.9559, 59.4217



90.5230, 93.1203, 100.6881



58.5009, 56.3702, 73.4436



19.1990, 19.6634, 21.2300



0.0000, 0.0000, 0.0000



20.3446, 21.4041, 23.3091

Same Dimension

The Same Dimension uses a secret algorithm to generate beautiful new colors.



57.0980, 55.9559, 59.4217



80.2115, 77.5044, 81.8148



58.5981, 59.6697, 57.7221



13.1372, 13.0840, 13.9839



17.5160, 9.0075, 1.8316



1.1609, 0.5940, 0.2561

Inverse Universe

The Inverse Universe completely reimagines the original color for something new.



57.0980, 55.9559, 59.4217



80.2115, 77.5044, 81.8148



56.6495, 61.3625, 74.5048



13.1372, 13.0840, 13.9839



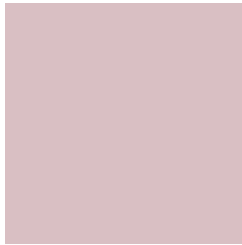
17.5160, 9.0075, 1.8316



1.1609, 0.5940, 0.2561

Previews

White Background



This preview shows how the XYZ color 57.0964, 55.9534, 59.4205 looks on a white background.

Color Contrast Check

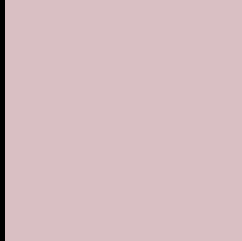
Large Text (above 18pt) WCAG AA × Fail

Any Text WCAG AA × Fail

Large Text (above 18pt) WCAG AAA × Fail

Any Text WCAG AAA × Fail

Black Background



This preview shows how the XYZ color 57.0964, 55.9534, 59.4205 looks on a black background.

Color Contrast Check

Large Text (above 18pt) WCAG AA ✓ Pass

Any Text WCAG AA ✓ Pass

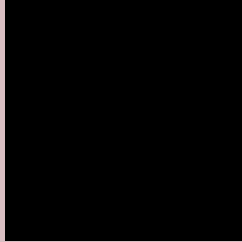
Large Text (above 18pt) WCAG AAA ✓ Pass

Any Text WCAG AAA ✓ Pass

If you want to check with other color combinations, try the [Color Contrast Checker](#).

XYZ 57.0964, 55.9534, 59.4205

Background



This preview shows how black text looks on a background with the XYZ color 57.0964, 55.9534, 59.4205.



This preview shows how white text looks on a background with the XYZ color 57.0964, 55.9534,

Color Blindness Simulation

Color vision deficiency is a very complex topic, and I could not describe the different causes any better than Wikipedia does, so if you want to learn more, you should check out their [article about color blindness](#).

Dichromacy



Original Color

57.0964, 55.9534, 59.4205

Protanopia

53.7524, 55.8364, 61.3705

Deuteranopia

57.0964, 55.9534, 59.4205



Tritanopia

58.2260, 56.0920, 64.8847

Trichromacy



Original Color

57.0964, 55.9534, 59.4205

Protanomaly

54.8234, 55.7366, 60.6921

Deuteranomaly

57.0964, 55.9534, 59.4205

Tritanomaly

57.8695, 55.9494, 63.0076

Monochromacy



Original Color

57.0964, 55.9534, 59.4205

Achromatopsia

54.2854, 57.1125, 62.1955

Achromatomaly

55.3866, 56.6789, 61.4470

CSS Examples

Text

The CSS property to change the color of the text to XYZ 57.0964, 55.9534, 59.4205 is called "color". The color property can be set on classes, ids or directly on the HTML element.

This example shows how text in the color `rgb(217, 191, 195)` looks like.

```
.text, #text, p{  
    color:rgb(217, 191, 195)  
}
```

If you want to add a text shadow in that color use the text-shadow property, you can generate a text shadow directly with our [CSS Text Shadow Generator](#).

Here you see how black text with a 4 pixel rgb(217, 191, 195) colored shadow looks like.

```
.shadow{ text-shadow: 4px 4px 2px rgb(217, 191, 195) }
```

Border

The CSS property to change the border of an element to XYZ 57.0964, 55.9534, 59.4205 is called "border". The border property can be set on classes, ids or directly on the HTML element.

This example shows the color as border, it can be applied via the CSS property "border" or "border-color".

```
.border, #border, table{ border:4px solid rgb(217, 191, 195) }
```


If only the border color should be changed use the property `border-color`.

```
.border{ border-color:rgb(217, 191, 195) }
```

If you want to add a box shadow in that color use:

Here you see how a box with a 4 pixel `rgb(217, 191, 195)` colored shadow looks like.

```
.boxshadow{ -moz-box-shadow:4px 4px 4px  
4px rgb(217, 191, 195); -webkit-box-  
shadow:4px 4px 4px 4px rgb(217, 191, 195);  
box-shadow:4px 4px 4px 4px rgb(217, 191,  
195) }
```

Background

The CSS property to change the background color of an element to XYZ 57.0964, 55.9534, 59.4205 is called "background". The background property can be set on classes, ids or directly on the HTML element.

```
.background, #background, body{  
background: rgb(217, 191, 195) }
```

If only the background color should be changed can be used:

```
.background{ background-color: rgb(217,  
191, 195) }
```

This example shows the color as background, it is applied via the CSS property "background".

To optimize and compress your CSS code, you can use our [online CSS compressor and optimizer](#) based on csstidy. If you want to create a linear or radial gradient as background or border, check our [CSS Gradient Generator](#).

Hey! You found this booklet interesting? Support Converting Colors with the new Membership Option!

The pro membership hides all ads, plus gives you double the colors in the color bucket, and more awesome pro features!

[Learn more, Memberships starting at \\$2.50/m!](#)

**Follow me
on Twitter!**

@ConvertingColor