

# Converting Colors

XYZ(57.0179, 57.0448, 55.9068)

Have a look what the booklet for  
XYZ(57.0179, 57.0448, 55.9068)  
contains.

<b>XYZ(57.0924, 57.0094, 56.1389)</b> .....	3
<b><i>Conversions</i></b> .....	4
<b><i>Details</i></b> .....	6
<b><i>Harmonies</i></b> .....	12
<b><i>Previews</i></b> .....	24
<b><i>Color Blindness Simulation</i></b> .....	28
<b><i>CSS Examples</i></b> .....	31

# Color

**XYZ(57.0924, 57.0094,  
56.1389)**

# Conversions

## Conversions Part 1

<b>Format</b>	<b>Color</b>
Hex	D9C2BD
RGB	217, 194, 189
RGB Percent	85%, 76%, 74%
CMY	0.1490, 0.2392, 0.2588
CMYK	0.00, 0.11, 0.13, 0.15
HSL	11°, 27%, 80%
HSV	11°, 13%, 85%
XYZ	57.0924, 57.0094, 56.1389
YIQ	200.3070, 15.3130, 3.3210

# Conversions

## Conversions Part 2

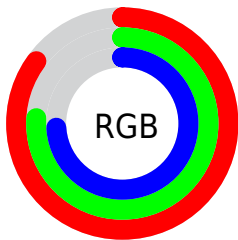
<b>Format</b>	<b>Color</b>
<b>R<sub>YB</sub></b>	217, 195, 189
Decimal	14271165
CIE Lab	80.18, 7.28, 5.46
CIE LCh	80, 9.105, 36.868
Yxy	57.0094, 0.3354, 0.3349
Android (android.graphics.Color)	4292461245 (0xFFD9C2BD)
YUV	200.3070, -5.5744, 14.6398
Hunter-Lab	75.5046, 2.8389, 8.7701

# Details

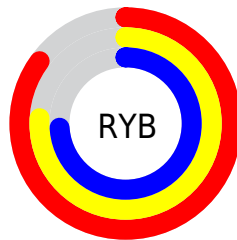
The XYZ color **57.0924, 57.0094, 56.1389** is a light color, and the websafe version is hex **CCCCCC**. A complement of this color would be **57.0539, 62.9144, 74.7830**, and the grayscale version is **55.1169, 57.9873, 63.1481**.

A 20% lighter version of the original color is **91.9070, 96.2238, 100.1152**, and **28.7223, 28.2151, 27.2248** is the 20% darker color. If you saturate the color by 10%, you get **51.1798, 48.6756, 43.4033**, and if you desaturate by 10%, it is **63.8364, 66.4407, 70.8918**.

# Distribution



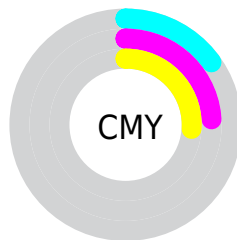
- Red (85%)
- Green (76%)
- Blue (74%)



- Red (85%)
- Yellow (76%)
- Blue (74%)



- Cyan (0%)
- Magenta (11%)
- Yellow (13%)
- Black (15%)



- Cyan (15%)
- Magenta (24%)
- Yellow (26%)

# Brightness & Saturation Gradients

These gradients show how the XYZ color 57.0924, 57.0094, 56.1389 changes by changing the brightness by 10 percent. The first figure shows a shift by +10% for each color and the second figure -10%.

Similar to the brightness gradients but the following saturation gradients show a change of the XYZ color 57.0924, 57.0094, 56.1389 by changing the saturation by 10% instead.



■ 57.0924, 57.0094,  
56.1389

■ 57.0924, 57.0094,  
56.1389

403.8040,  
413.4845, 427.6178

■ 41.3199, 41.0128,  
39.9096

■ 99.7306, 100.4789,  
100.6955

■ 28.7579, 28.3291,  
27.1548

127.3269,  
128.7206, 129.8597

■ 19.0411, 18.5739,  
17.4560

159.5953,  
161.8127, 164.1728

■ 11.8042, 11.3628,  
10.3948

196.9009,  
200.1398, 204.0531

■ 6.6817, 6.3114,  
5.5525

239.6093,  
244.0861, 249.9192

■ 3.3084, 3.0353,  
2.5106

288.0857,

■ 1.3189, 1.1502,

294.0360, 302.1896

0.8458

342.6955,  
350.3741, 361.2830

■ 0.1973, 0.0205,  
0.0000

■ 0.0000, 0.0000,  
0.0000

■ 57.0924, 57.0094,  
56.1389

■ 57.0924, 57.0094,  
56.1389

■ 51.1798, 48.6756,  
43.4033

■ 63.8364, 66.4407,  
70.8918

■ 46.0614, 41.3919,  
32.5935

■ 71.4375, 76.9996,  
87.7406

■ 41.7044, 35.1187,  
23.6165

■ 79.9264, 88.7244,  
106.7643

■ 38.0717, 29.8109,  
16.3702

■ 82.4256, 93.4919,  
108.3092

■ 35.1230, 25.4202,  
10.7422

■ 32.8139, 21.8937,  
6.6071

■ 31.0947, 19.1732,  
3.8205

■ 29.9073, 17.1928,  
2.2093

■ 29.3339, 16.1885,  
1.5786

# Harmonies

## Analogous

The Analogous color harmony consists of three colors that are next to each other on the color wheel.



57.8081, 57.0094, 60.8589



57.0924, 57.0094, 56.1389



55.6004, 57.0094, 53.1377

# Triad

The Triadic color harmony groups three colors that are evenly spaced from another and form a triangle on the color wheel.



57.0924, 57.0094, 56.1389



50.9685, 57.0094, 58.1428



54.6138, 57.0094, 72.7883

# Complementary

The Complementary color scheme is a pair of colors which are on the opposite of each other on the color wheel.



57.0924, 57.0094, 56.1389



57.0539, 62.9144, 74.7830

# Split Complementary

Split-complementary colors differ from the complementary color scheme. The scheme consists of three colors, the original color and two neighbors of the complement color.



52.7952, 57.0094, 71.9589



57.0924, 57.0094, 56.1389



50.7179, 57.0094, 63.3043

# Square

The Square scheme is like the rectangle color scheme, but the four colors are evenly spaced on the color wheel.



57.0924, 57.0094, 56.1389



52.0718, 57.0094, 54.2477



51.3794, 57.0094, 68.4124



56.3561, 57.0094, 70.6181



# Rectangle

The Rectangle color scheme consists of four colors that form a rectangle on the color wheel.



57.0924, 57.0094, 56.1389



54.3810, 57.0094, 52.4137



51.3794, 57.0094, 68.4124



53.9909, 57.0094, 72.8529

# Sweetspot

The Sweet Spot groups the original color and five complimentary colors.



57.0940, 57.0119, 56.1401



90.8364, 94.1314, 99.6078



58.7394, 55.9180, 70.2061



19.2779, 19.9181, 20.9579



0.0000, 0.0000, 0.0000



20.3446, 21.4041, 23.3091



# Same Dimension

The Same Dimension uses a secret algorithm to generate beautiful new colors.



57.0940, 57.0119, 56.1401



80.2763, 79.3456, 76.5595



60.2760, 63.3760, 57.2008



13.2433, 13.4259, 13.6190



17.8119, 9.9093, 0.9739



1.2112, 0.7566, 0.0822



# Inverse Universe

The Inverse Universe completely reimagines the original color for something new.



57.0539, 62.9144, 74.7830



80.2090, 89.1693, 107.5917



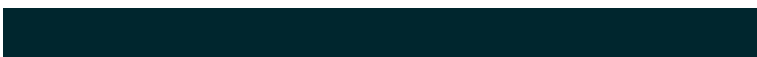
53.7818, 56.3701, 73.6923



13.2367, 14.4131, 16.7365



17.3160, 22.5014, 43.1690



1.1746, 1.5634, 2.8143



# Previews

## White Background



This preview shows how the XYZ color 57.0924, 57.0094, 56.1389 looks on a white background.

## Color Contrast Check

Large Text (above 18pt) WCAG AA × Fail

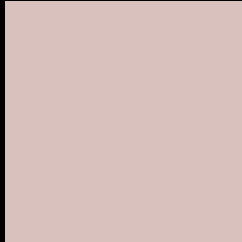
Any Text WCAG AA × Fail

Large Text (above 18pt) WCAG AAA × Fail

Any Text WCAG AAA × Fail



# Black Background



This preview shows how the XYZ color 57.0924, 57.0094, 56.1389 looks on a black background.

## Color Contrast Check

Large Text (above 18pt) WCAG AA ✓ Pass

Any Text WCAG AA ✓ Pass

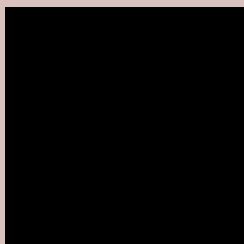
Large Text (above 18pt) WCAG AAA ✓ Pass

Any Text WCAG AAA ✓ Pass

If you want to check with other color combinations, try the [Color Contrast Checker](#).

**XYZ 57.0924, 57.0094, 56.1389**

## **Background**



This preview shows how black text looks on a background with the XYZ color 57.0924, 57.0094, 56.1389.



This preview shows how white text looks on a background with the XYZ color 57.0924, 57.0094,



# Color Blindness Simulation

Color vision deficiency is a very complex topic, and I could not describe the different causes any better than Wikipedia does, so if you want to learn more, you should check out their [article about color blindness](#).

## Dichromacy



### Original Color

57.0924, 57.0094, 56.1389

### Protanopia

54.4999, 56.9871, 57.4174

### Deuteranopia

58.1591, 56.9030, 56.0622



## Tritanopia

58.9848, 56.7779, 66.2429

# Trichromacy



## Original Color

57.0924, 57.0094, 56.1389

## Protanomaly

55.5550, 57.2055, 56.8289

## Deuteranomaly

57.7705, 57.0297, 56.1071

## Tritanomaly

58.1884, 56.7748, 62.5354

# Monochromacy



## Original Color

57.0924, 57.0094, 56.1389

## Achromatopsia

54.8990, 57.7580, 62.8985

## Achromatomaly

55.6115, 57.4955, 60.3913

# CSS Examples

## Text

The CSS property to change the color of the text to XYZ 57.0924, 57.0094, 56.1389 is called "color". The color property can be set on classes, ids or directly on the HTML element.

This example shows how text in the color `rgb(217, 194, 189)` looks like.

```
.text, #text, p{  
    color:rgb(217, 194, 189)  
}
```

If you want to add a text shadow in that color use the text-shadow property, you can generate a text shadow directly with our [CSS Text Shadow Generator](#).

Here you see how black text with a 4 pixel rgb(217, 194, 189) colored shadow looks like.

```
.shadow{ text-shadow: 4px 4px 2px rgb(217, 194, 189) }
```

## Border

The CSS property to change the border of an element to XYZ 57.0924, 57.0094, 56.1389 is called "border". The border property can be set on classes, ids or directly on the HTML element.

This example shows the color as border, it can be applied via the CSS property "border" or "border-color".

```
.border, #border, table{ border:4px solid rgb(217, 194, 189) }
```



If only the border color should be changed use the property `border-color`.

```
.border{ border-color:rgb(217, 194, 189) }
```

If you want to add a box shadow in that color use:

Here you see how a box with a 4 pixel `rgb(217, 194, 189)` colored shadow looks like.

```
.boxshadow{ -moz-box-shadow:4px 4px 4px  
4px rgb(217, 194, 189); -webkit-box-  
shadow:4px 4px 4px 4px rgb(217, 194, 189);  
box-shadow:4px 4px 4px 4px rgb(217, 194,  
189) }
```

# Background

The CSS property to change the background color of an element to XYZ 57.0924, 57.0094, 56.1389 is called "background". The background property can be set on classes, ids or directly on the HTML element.

```
.background, #background, body{  
background: rgb(217, 194, 189) }
```

If only the background color should be changed can be used:

```
.background{ background-color: rgb(217,  
194, 189) }
```

This example shows the color as background, it is applied via the CSS property "background".

To optimize and compress your CSS code, you can use our [online CSS compressor and optimizer](#) based on csstidy. If you want to create a linear or radial gradient as background or border, check our [CSS Gradient Generator](#).

Hey! You found this booklet interesting? Support Converting Colors with the new Membership Option!

The pro membership hides all ads, plus gives you double the colors in the color bucket, and more awesome pro features!

**[Learn more, Memberships starting at \\$2.50/m!](#)**

**Follow me  
on Twitter!**

@ConvertingColor