

Converting Colors

XYZ(57.0257, 57.2285, 51.7583)

Have a look what the booklet for
XYZ(57.0257, 57.2285, 51.7583)
contains.

XYZ(56.8457, 56.9798, 51.7182)	3
<i>Conversions</i>	4
<i>Details</i>	6
<i>Harmonies</i>	12
<i>Previews</i>	24
<i>Color Blindness Simulation</i>	28
<i>CSS Examples</i>	31

Color

**XYZ(56.8457, 56.9798,
51.7182)**

Conversions

Conversions Part 1

Format	Color
Hex	DBC2B5
RGB	219, 194, 181
RGB Percent	86%, 76%, 71%
CMY	0.1412, 0.2392, 0.2902
CMYK	0.00, 0.11, 0.17, 0.14
HSL	21°, 35%, 78%
HSV	21°, 17%, 86%
XYZ	56.8457, 56.9798, 51.7182
YIQ	199.9930, 19.0730, 1.2570

Conversions

Conversions Part 2

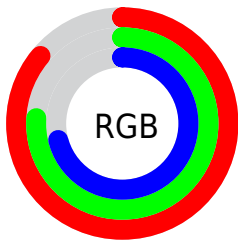
Format	Color
R _Y B	219, 201, 181
Decimal	14402229
CIE Lab	80.17, 6.75, 9.76
CIE LCh	80, 11.865, 55.340
Yxy	56.9798, 0.3434, 0.3442
Android (android.graphics.Color)	4292592309 (0xFFDBC2B5)
YUV	199.9930, -9.3635, 16.6691
Hunter-Lab	75.4850, 2.3249, 12.2172

Details

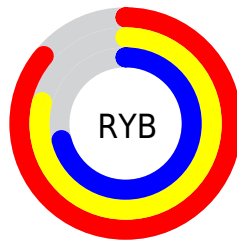
The XYZ color **56.8457, 56.9798, 51.7182** is a light color, and the websafe version is hex **CCCCCC**. A complement of this color would be **53.9133, 59.0796, 75.5803**, and the grayscale version is **54.9443, 57.8057, 62.9504**.

A 20% lighter version of the original color is **90.7117, 95.7456, 93.8205**, and **28.5842, 28.2072, 24.3601** is the 20% darker color. If you saturate the color by 10%, you get **51.7210, 50.0480, 39.7813**, and if you desaturate by 10%, it is **62.6376, 64.6797, 65.6215**.

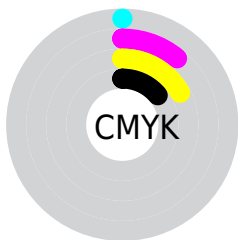
Distribution



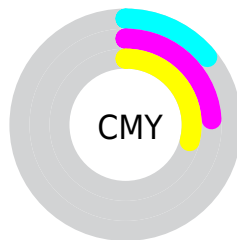
- Red (86%)
- Green (76%)
- Blue (71%)



- Red (86%)
- Yellow (79%)
- Blue (71%)



- Cyan (0%)
- Magenta (11%)
- Yellow (17%)
- Black (14%)





- Cyan (14%)
- Magenta (24%)
- Yellow (29%)

Brightness & Saturation Gradients


These gradients show how the XYZ color 56.8457, 56.9798, 51.7182 changes by changing the brightness by 10 percent. The first figure shows a shift by +10% for each color and the second figure -10%.


Similar to the brightness gradients but the following saturation gradients show a change of the XYZ color 56.8457, 56.9798, 51.7182 by changing the saturation by 10% instead.


 56.8457, 56.9798,
51.7182

 56.8457, 56.9798,
51.7182


402.8944,
413.3736, 410.2737

 41.1210, 40.9890,
36.3998


 99.3727, 100.4357,
94.1379

 28.6018, 28.3105,
24.4510


126.9057,
128.6696, 122.0762

 18.9225, 18.5599,
15.4532


159.1055,
161.7534, 155.0583

 11.7180, 11.3527,
8.9879

196.3375,
200.0714, 193.5027

 6.6228, 6.3046,
4.6366

238.9670,
244.0080, 237.8278

 3.2715, 3.0312,
1.9807

287.3595,

 1.2989, 1.1480,

293.9477, 288.4524

0.5434

341.8801,
350.2747, 345.7948

■ 0.1824, 0.0186,
0.0000

■ 0.0000, 0.0000,
0.0000

■ 56.8457, 56.9798,
51.7182

■ 56.8457, 56.9798,
51.7182

■ 51.7210, 50.0480,
39.7813

■ 62.6376, 64.6797,
65.6215

■ 47.2336, 43.8524,
29.7176

■ 69.1159, 73.1630,
81.5715

■ 43.3581, 38.3701,
21.4317

■ 76.3047, 82.4543,
99.6482

■ 40.0654, 33.5739,
14.8181

■ 81.9573, 91.6675,
107.9817

■ 37.3238, 29.4350,
9.7603

■ 83.0236, 93.8002,
108.3372

■ 35.0983, 25.9220,
6.1262

■ 33.3486, 23.0004,
3.7618

■ 32.0241, 20.6303,
2.4608

■ 31.7259, 20.0848,
2.2046

Harmonies

Analogous

The Analogous color harmony consists of three colors that are next to each other on the color wheel.



58.4704, 56.9798, 56.5138



56.8457, 56.9798, 51.7182



54.5363, 56.9798, 49.6908

Triad

The Triadic color harmony groups three colors that are evenly spaced from another and form a triangle on the color wheel.



56.8457, 56.9798, 51.7182



49.6534, 56.9798, 60.9655



56.1724, 56.9798, 74.8740

Complementary

The Complementary color scheme is a pair of colors which are on the opposite of each other on the color wheel.



56.8457, 56.9798, 51.7182



53.9133, 59.0796, 75.5803

Split Complementary

Split-complementary colors differ from the complementary color scheme. The scheme consists of three colors, the original color and two neighbors of the complement color.



53.7806, 56.9798, 76.2855



56.8457, 56.9798, 51.7182



50.0623, 56.9798, 67.9180

Square

The Square scheme is like the rectangle color scheme, but the four colors are evenly spaced on the color wheel.



56.8457, 56.9798, 51.7182



50.4217, 56.9798, 54.7708



51.5556, 56.9798, 73.6541



58.0736, 56.9798, 69.9283

Rectangle

The Rectangle color scheme consists of four colors that form a rectangle on the color wheel.



56.8457, 56.9798, 51.7182



52.9366, 56.9798, 50.0629



51.5556, 56.9798, 73.6541



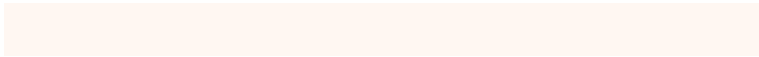
55.3972, 56.9798, 75.7925

Sweetspot

The Sweet Spot groups the original color and five complimentary colors.



56.8472, 56.9824, 51.7194



90.4472, 93.9710, 97.5725



56.9191, 52.5811, 65.7549



19.2253, 19.9372, 20.5566



0.0000, 0.0000, 0.0000



20.3446, 21.4041, 23.3091

Same Dimension

The Same Dimension uses a secret algorithm to generate beautiful new colors.



56.8472, 56.9824, 51.7194



77.3699, 76.5668, 66.2373



61.2650, 65.8179, 53.1920



13.4185, 13.7764, 13.6774



18.9036, 12.0928, 1.3378



1.3032, 0.9405, 0.1128

Inverse Universe

The Inverse Universe completely reimagines the original color for something new.



53.9133, 59.0796, 75.5803



72.4486, 80.0801, 106.2463



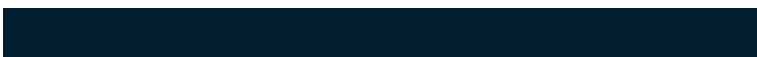
49.6841, 50.6213, 74.1706



13.0502, 14.0401, 16.6743



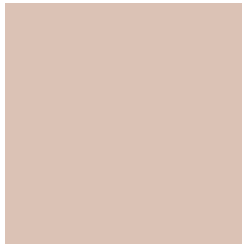
13.6058, 15.0810, 41.9322



0.9603, 1.1348, 2.7429

Previews

White Background



This preview shows how the XYZ color 56.8457, 56.9798, 51.7182 looks on a white background.

Color Contrast Check

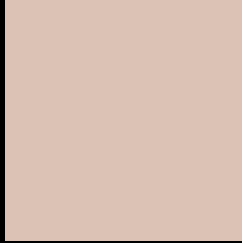
Large Text (above 18pt) WCAG AA × Fail

Any Text WCAG AA × Fail

Large Text (above 18pt) WCAG AAA × Fail

Any Text WCAG AAA × Fail

Black Background



This preview shows how the XYZ color 56.8457, 56.9798, 51.7182 looks on a black background.

Color Contrast Check

Large Text (above 18pt) WCAG AA ✓ Pass

Any Text WCAG AA ✓ Pass

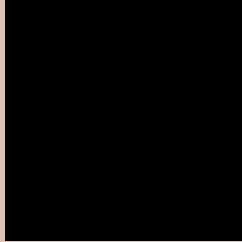
Large Text (above 18pt) WCAG AAA ✓ Pass

Any Text WCAG AAA ✓ Pass

If you want to check with other color combinations, try the [Color Contrast Checker](#).

XYZ 56.8457, 56.9798, 51.7182

Background



This preview shows how black text looks on a background with the XYZ color 56.8457, 56.9798, 51.7182.



This preview shows how white text looks on a background with the XYZ color 56.8457, 56.9798,

Color Blindness Simulation

Color vision deficiency is a very complex topic, and I could not describe the different causes any better than Wikipedia does, so if you want to learn more, you should check out their [article about color blindness](#).

Dichromacy



Original Color

56.8457, 56.9798, 51.7182

Protanopia

54.1949, 56.9289, 52.9317

Deuteranopia

58.2415, 57.0430, 51.6568



Tritanopia

59.5571, 56.7643, 65.5752

Trichromacy



Original Color

56.8457, 56.9798, 51.7182

Protanomaly

55.2737, 57.1588, 52.3755

Deuteranomaly

57.8419, 57.1641, 51.7012

Tritanomaly

58.4134, 56.6193, 60.0744

Monochromacy



Original Color

56.8457, 56.9798, 51.7182

Achromatopsia

54.8990, 57.7580, 62.8985

Achromatomaly

55.5518, 57.5038, 58.6235

CSS Examples

Text

The CSS property to change the color of the text to XYZ 56.8457, 56.9798, 51.7182 is called "color". The color property can be set on classes, ids or directly on the HTML element.

This example shows how text in the color `rgb(219, 194, 181)` looks like.

```
.text, #text, p{  
    color:rgb(219, 194, 181)  
}
```

If you want to add a text shadow in that color use the text-shadow property, you can generate a text shadow directly with our [CSS Text Shadow Generator](#).

Here you see how black text with a 4 pixel rgb(219, 194, 181) colored shadow looks like.

```
.shadow{ text-shadow: 4px 4px 2px rgb(219, 194, 181) }
```

Border

The CSS property to change the border of an element to XYZ 56.8457, 56.9798, 51.7182 is called "border". The border property can be set on classes, ids or directly on the HTML element.

This example shows the color as border, it can be applied via the CSS property "border" or "border-color".

```
.border, #border, table{ border:4px solid rgb(219, 194, 181) }
```


If only the border color should be changed use the property border-color.

```
.border{ border-color:rgb(219, 194, 181) }
```

If you want to add a box shadow in that color use:

Here you see how a box with a 4 pixel rgb(219, 194, 181) colored shadow looks like.

```
.boxshadow{ -moz-box-shadow:4px 4px 4px  
4px rgb(219, 194, 181); -webkit-box-  
shadow:4px 4px 4px 4px rgb(219, 194, 181);  
box-shadow:4px 4px 4px 4px rgb(219, 194,  
181) }
```

Background

The CSS property to change the background color of an element to XYZ 56.8457, 56.9798, 51.7182 is called "background". The background property can be set on classes, ids or directly on the HTML element.

```
.background, #background, body{  
background: rgb(219, 194, 181) }
```

If only the background color should be changed can be used:

```
.background{ background-color: rgb(219,  
194, 181) }
```

This example shows the color as background, it is applied via the CSS property "background".

To optimize and compress your CSS code, you can use our [online CSS compressor and optimizer](#) based on csstidy. If you want to create a linear or radial gradient as background or border, check our [CSS Gradient Generator](#).

Hey! You found this booklet interesting? Support Converting Colors with the new Membership Option!

The pro membership hides all ads, plus gives you double the colors in the color bucket, and more awesome pro features!

[Learn more, Memberships starting at \\$2.50/m!](#)

**Follow me
on Twitter!**

@ConvertingColor