

Converting Colors

XYZ(57.0709, 54.7353, 58.7815)

Have a look what the booklet for
XYZ(57.0709, 54.7353, 58.7815)
contains.

XYZ(57.0231, 54.6513, 58.5823)	3
<i>Conversions</i>	4
<i>Details</i>	6
<i>Harmonies</i>	12
<i>Previews</i>	24
<i>Color Blindness Simulation</i>	28
<i>CSS Examples</i>	31

Color

**XYZ(57.0231, 54.6513,
58.5823)**

Conversions

Conversions Part 1

Format	Color
Hex	DCBBC2
RGB	220, 187, 194
RGB Percent	86%, 73%, 76%
CMY	0.1373, 0.2666, 0.2392
CMYK	0.00, 0.15, 0.12, 0.14
HSL	347°, 32%, 80%
HSV	347°, 15%, 86%
XYZ	57.0231, 54.6513, 58.5823
YIQ	197.6650, 17.4210, 9.1730

Conversions

Conversions Part 2

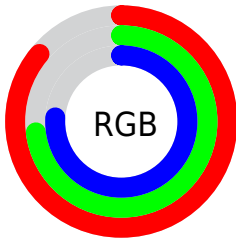
Format	Color
R _{YB}	220, 187, 194
Decimal	14465986
CIE Lab	78.84, 12.91, 0.85
CIE LCh	79, 12.939, 3.769
Yxy	54.6513, 0.3349, 0.3210
Android (android.graphics.Color)	4292656066 (0xFFDCBBC2)
YUV	197.6650, -1.8068, 19.5878
Hunter-Lab	73.9265, 8.3143, 4.7648

Details

The XYZ color **57.0231, 54.6513, 58.5823** is a light color, and the websafe version is hex **FFCCCC**. A complement of this color would be **58.0990, 66.5566, 72.7384**, and the grayscale version is **53.4777, 56.2627, 61.2700**.

A 20% lighter version of the original color is **90.5459, 92.2633, 103.4788**, and **28.7758, 26.9430, 28.4948** is the 20% darker color. If you saturate the color by 10%, you get **50.8741, 45.2889, 47.4810**, and if you desaturate by 10%, it is **64.1173, 65.5394, 71.1206**.

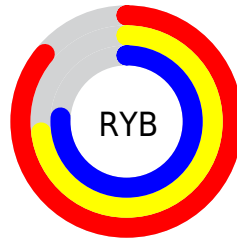
Distribution



Red (86%)

Green (73%)

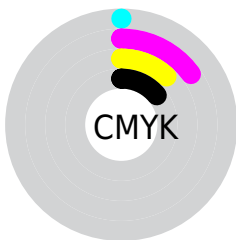
Blue (76%)



Red (86%)

Yellow (73%)

Blue (76%)

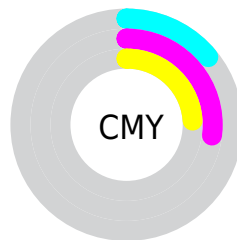


Cyan (0%)

Magenta (15%)

Yellow (12%)

Black (14%)



Cyan (14%)

Magenta (27%)

Yellow (24%)

Brightness & Saturation Gradients

These gradients show how the XYZ color 57.0231, 54.6513, 58.5823 changes by changing the brightness by 10 percent. The first figure shows a shift by +10% for each color and the second figure -10%.

Similar to the brightness gradients but the following saturation gradients show a change of the XYZ color 57.0231, 54.6513, 58.5823 by changing the saturation by 10% instead.

■ 57.0231, 54.6513,
58.5823

■ 57.0231, 54.6513,
58.5823

403.5486,
404.5888, 437.0109

■ 41.2640, 39.1226,
41.8592

■ 99.6301, 97.0299,
104.2935

■ 28.7140, 26.8551,
28.6663

127.2086,
124.6485, 134.1186

■ 19.0078, 17.4644,
18.5851

159.4577,
157.0660, 169.1481

■ 11.7799, 10.5662,
11.1971

196.7427,
194.6666, 209.8006

■ 6.6651, 5.7759,
6.0837

239.4289,
237.8348, 256.4946

■ 3.2980, 2.7093,
2.8265

287.8818,

■ 1.3133, 0.9819,

286.9550, 309.6486

1.0067

342.4666,
342.4115, 369.6812

■ 0.1931, 0.0000,
0.0000

■ 0.0000, 0.0000,
0.0000

■ 57.0231, 54.6513,
58.5823

■ 57.0231, 54.6513,
58.5823

■ 50.8741, 45.2889,
47.4810

■ 64.1173, 65.5394,
71.1206

■ 45.6254, 37.3769,
37.7613

■ 72.1900, 78.0094,
85.1414

■ 41.2356, 30.8446,
29.3696

■ 81.2781, 92.1240,
100.6926

■ 37.6577, 25.6124,
22.2473

■ 83.3254, 93.9558,
108.3513

■ 34.8406, 21.5926,
16.3312

■ 32.7269, 18.6866,
11.5525

■ 31.2506, 16.7802,
7.8352

■ 30.3324, 15.7341,
5.0929

■ 30.0215, 15.4182,
4.0459

Harmonies

Analogous

The Analogous color harmony consists of three colors that are next to each other on the color wheel.



56.4956, 54.6513, 65.9703



57.0231, 54.6513, 58.5823



56.1534, 54.6513, 51.9946

Triad

The Triadic color harmony groups three colors that are evenly spaced from another and form a triangle on the color wheel.



57.0231, 54.6513, 58.5823



49.2508, 54.6513, 48.5190



49.7947, 54.6513, 73.0976

Complementary

The Complementary color scheme is a pair of colors which are on the opposite of each other on the color wheel.



57.0231, 54.6513, 58.5823



58.0990, 66.5566, 72.7384

Split Complementary

Split-complementary colors differ from the complementary color scheme. The scheme consists of three colors, the original color and two neighbors of the complement color.



47.9512, 54.6513, 67.7080



57.0231, 54.6513, 58.5823



47.6445, 54.6513, 53.4783

Square

The Square scheme is like the rectangle color scheme, but the four colors are evenly spaced on the color wheel.



57.0231, 54.6513, 58.5823



51.6209, 54.6513, 46.4945



47.1766, 54.6513, 60.4393



52.2693, 54.6513, 74.7433

Rectangle

The Rectangle color scheme consists of four colors that form a rectangle on the color wheel.



57.0231, 54.6513, 58.5823



54.9145, 54.6513, 48.8235



47.1766, 54.6513, 60.4393



49.0834, 54.6513, 71.6430

Sweetspot

The Sweet Spot groups the original color and five complimentary colors.



57.0246, 54.6537, 58.5835



90.6147, 93.1570, 101.1707



58.0874, 54.8342, 75.2332



19.2221, 19.6726, 21.3517



0.0000, 0.0000, 0.0000



20.3446, 21.4041, 23.3091

Same Dimension

The Same Dimension uses a secret algorithm to generate beautiful new colors.



57.0246, 54.6537, 58.5835



76.8291, 72.0157, 76.7532



58.3055, 58.4436, 55.2243



13.1684, 13.0965, 14.1483



17.6524, 9.0620, 2.5499



1.1755, 0.5999, 0.3333

Inverse Universe

The Inverse Universe completely reimagines the original color for something new.



57.0246, 54.6537, 58.5835



76.8291, 72.0157, 76.7532



56.6211, 62.1486, 76.7223



13.1684, 13.0965, 14.1483



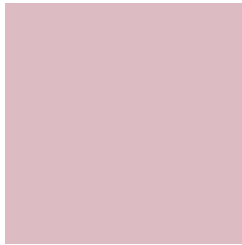
17.6524, 9.0620, 2.5499



1.1755, 0.5999, 0.3333

Previews

White Background



This preview shows how the XYZ color 57.0231, 54.6513, 58.5823 looks on a white background.

Color Contrast Check

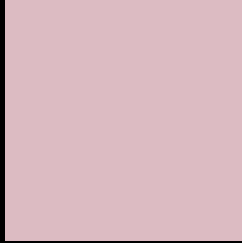
Large Text (above 18pt) WCAG AA × Fail

Any Text WCAG AA × Fail

Large Text (above 18pt) WCAG AAA × Fail

Any Text WCAG AAA × Fail

Black Background



This preview shows how the XYZ color 57.0231, 54.6513, 58.5823 looks on a black background.

Color Contrast Check

Large Text (above 18pt) WCAG AA ✓ Pass

Any Text WCAG AA ✓ Pass

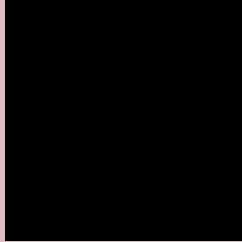
Large Text (above 18pt) WCAG AAA ✓ Pass

Any Text WCAG AAA ✓ Pass

If you want to check with other color combinations, try the [Color Contrast Checker](#).

XYZ 57.0231, 54.6513, 58.5823

Background



This preview shows how black text looks on a background with the XYZ color 57.0231, 54.6513, 58.5823.



This preview shows how white text looks on a background with the XYZ color 57.0231, 54.6513,

Color Blindness Simulation

Color vision deficiency is a very complex topic, and I could not describe the different causes any better than Wikipedia does, so if you want to learn more, you should check out their [article about color blindness](#).

Dichromacy



Original Color

57.0231, 54.6513, 58.5823

Protanopia

52.7735, 54.6666, 61.1963

Deuteranopia

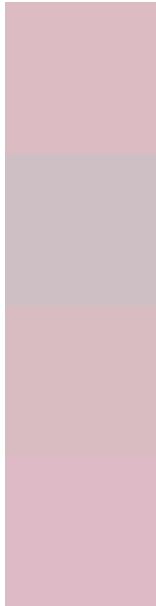
55.9595, 54.7373, 58.6549



Tritanopia

57.8030, 54.6601, 62.1475

Trichromacy



Original Color

57.0231, 54.6513, 58.5823

Protanomaly

54.1624, 54.4146, 60.4717

Deuteranomaly

56.3361, 54.6132, 58.6111

Tritanomaly

57.5707, 54.5672, 60.9243

Monochromacy



Original Color

57.0231, 54.6513, 58.5823

Achromatopsia

53.6758, 56.4712, 61.4971

Achromatomaly

54.8234, 55.7366, 60.6921

CSS Examples

Text

The CSS property to change the color of the text to XYZ 57.0231, 54.6513, 58.5823 is called "color". The color property can be set on classes, ids or directly on the HTML element.

This example shows how text in the color `rgb(220, 187, 194)` looks like.

```
.text, #text, p{  
    color:rgb(220, 187, 194)  
}
```

If you want to add a text shadow in that color use the text-shadow property, you can generate a text shadow directly with our [CSS Text Shadow Generator](#).

Here you see how black text with a 4 pixel rgb(220, 187, 194) colored shadow looks like.

```
.shadow{ text-shadow: 4px 4px 2px rgb(220, 187, 194) }
```

Border

The CSS property to change the border of an element to XYZ 57.0231, 54.6513, 58.5823 is called "border". The border property can be set on classes, ids or directly on the HTML element.

This example shows the color as border, it can be applied via the CSS property "border" or "border-color".

```
.border, #border, table{ border:4px solid rgb(220, 187, 194) }
```


If only the border color should be changed use the property border-color.

```
.border{ border-color:rgb(220, 187, 194) }
```

If you want to add a box shadow in that color use:

Here you see how a box with a 4 pixel rgb(220, 187, 194) colored shadow looks like.

```
.boxshadow{ -moz-box-shadow:4px 4px 4px  
4px rgb(220, 187, 194); -webkit-box-  
shadow:4px 4px 4px 4px rgb(220, 187, 194);  
box-shadow:4px 4px 4px 4px rgb(220, 187,  
194) }
```

Background

The CSS property to change the background color of an element to XYZ 57.0231, 54.6513, 58.5823 is called "background". The background property can be set on classes, ids or directly on the HTML element.

```
.background, #background, body{  
background: rgb(220, 187, 194) }
```

If only the background color should be changed can be used:

```
.background{ background-color: rgb(220,  
187, 194) }
```

This example shows the color as background, it is applied via the CSS property "background".

To optimize and compress your CSS code, you can use our [online CSS compressor and optimizer](#) based on csstidy. If you want to create a linear or radial gradient as background or border, check our [CSS Gradient Generator](#).

Hey! You found this booklet interesting? Support Converting Colors with the new Membership Option!

The pro membership hides all ads, plus gives you double the colors in the color bucket, and more awesome pro features!

[Learn more, Memberships starting at \\$2.50/m!](#)

**Follow me
on Twitter!**

@ConvertingColor