

Converting Colors

XYZ(57.0889, 54.9275, 47.6376)

Have a look what the booklet for
XYZ(57.0889, 54.9275, 47.6376)
contains.

XYZ(57.0889, 54.9275, 47.6376)	3
<i>Conversions</i>	4
<i>Details</i>	6
<i>Harmonies</i>	12
<i>Previews</i>	24
<i>Color Blindness Simulation</i>	28
<i>CSS Examples</i>	31

Color

**XYZ(57.0889, 54.9275,
47.6376)**

Conversions

Conversions Part 1

Format	Color
Hex	E3BBAE
RGB	227, 187, 174
RGB Percent	89%, 73%, 68%
CMY	0.1098, 0.2666, 0.3176
CMYK	0.00, 0.18, 0.23, 0.11
HSL	15°, 49%, 79%
HSV	15°, 23%, 89%
XYZ	57.0889, 54.9275, 47.6376
YIQ	197.4780, 28.0130, 4.4370

Conversions

Conversions Part 2

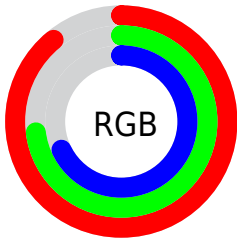
Format	Color
R _Y B	227, 191, 174
Decimal	14924718
CIE Lab	79.00, 12.39, 11.96
CIE LCh	79, 17.218, 44.002
Yxy	54.9275, 0.3576, 0.3440
Android (android.graphics.Color)	4293114798 (0xFFE3BBAE)
YUV	197.4780, -11.5747, 25.8908
Hunter-Lab	74.1131, 7.7996, 13.7694

Details

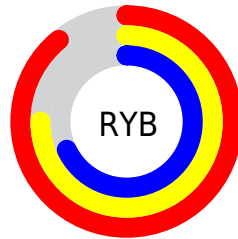
The XYZ color **57.0889, 54.9275, 47.6376** is a light color, and the websafe version is hex **FFCCCC**. A complement of this color would be **55.3669, 62.6364, 81.8454**, and the grayscale version is **53.4171, 56.1990, 61.2007**.

A 20% lighter version of the original color is **87.4334, 91.0183, 87.0888**, and **28.8325, 27.1133, 22.1261** is the 20% darker color. If you saturate the color by 10%, you get **51.6405, 47.2778, 35.8105**, and if you desaturate by 10%, it is **63.3478, 63.5989, 61.5812**.

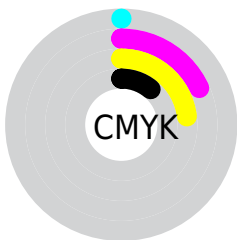
Distribution



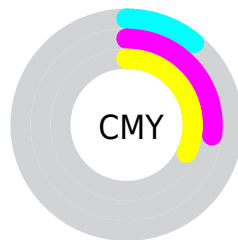
- Red (89%)
- Green (73%)
- Blue (68%)



- Red (89%)
- Yellow (75%)
- Blue (68%)



- Cyan (0%)
- Magenta (18%)
- Yellow (23%)
- Black (11%)



- Cyan (11%)
- Magenta (27%)
- Yellow (32%)

Brightness & Saturation Gradients

These gradients show how the XYZ color 57.0889, 54.9275, 47.6376 changes by changing the brightness by 10 percent. The first figure shows a shift by +10% for each color and the second figure -10%.

Similar to the brightness gradients but the following saturation gradients show a change of the XYZ color 57.0889, 54.9275, 47.6376 by changing the saturation by 10% instead.

■ 57.0889, 54.9275,
47.6376

■ 57.0889, 54.9275,
47.6376

403.7911,
405.6370, 393.8211

■ 41.3170, 39.3437,
33.1820

■ 99.7255, 97.4347,
88.0245

■ 28.7557, 27.0272,
21.9937

127.3210,
125.1269, 114.7929

■ 19.0394, 17.5936,
13.6540

159.5883,
157.6240, 146.5027

■ 11.8029, 10.6586,
7.7444

196.8929,
195.3104, 183.5724

■ 6.6809, 5.8378,
3.8464

239.6002,
238.5705, 226.4205

■ 3.3079, 2.7467,
1.5415

288.0754,

■ 1.3186, 1.0010,

287.7888, 275.4657

0.2485

342.6839,
343.3495, 331.1263

■ 0.1971, 0.0000,
0.0000

■ 0.0000, 0.0000,
0.0000

■ 57.0889, 54.9275,
47.6376

■ 57.0889, 54.9275,
47.6376

■ 51.6405, 47.2778,
35.8105

■ 63.3478, 63.5989,
61.5812

■ 46.9643, 40.6044,
25.9924

■ 70.4447, 73.3202,
77.7348

■ 43.0251, 34.8694,
18.0716

■ 78.4112, 84.1281,
96.1902

■ 39.7835, 30.0298,
11.9239

■ 85.4888, 95.0710,
108.4525

■ 37.1958, 26.0388,
7.4103

■ 35.2131, 22.8450,
4.3705

■ 33.7784, 20.3912,
2.6113

■ 33.0783, 19.1301,
1.9491

Harmonies

Analogous

The Analogous color harmony consists of three colors that are next to each other on the color wheel.



58.8613, 54.9275, 55.3581



57.0889, 54.9275, 47.6376



54.0431, 54.9275, 43.4464

Triad

The Triadic color harmony groups three colors that are evenly spaced from another and form a triangle on the color wheel.



57.0889, 54.9275, 47.6376



46.1286, 54.9275, 54.7578



53.8167, 54.9275, 80.0376

Complementary

The Complementary color scheme is a pair of colors which are on the opposite of each other on the color wheel.



57.0889, 54.9275, 47.6376



55.3669, 62.6364, 81.8454

Split Complementary

Split-complementary colors differ from the complementary color scheme. The scheme consists of three colors, the original color and two neighbors of the complement color.



50.4129, 54.9275, 79.8314



57.0889, 54.9275, 47.6376



46.0740, 54.9275, 64.4875

Square

The Square scheme is like the rectangle color scheme, but the four colors are evenly spaced on the color wheel.



57.0889, 54.9275, 47.6376



47.7642, 54.9275, 47.2397



47.6116, 54.9275, 73.8895



56.9170, 54.9275, 74.4255

Rectangle

The Rectangle color scheme consists of four colors that form a rectangle on the color wheel.



57.0889, 54.9275, 47.6376



51.7486, 54.9275, 42.8956



47.6116, 54.9275, 73.8895



52.6680, 54.9275, 80.6640

Sweetspot

The Sweet Spot groups the original color and five complimentary colors.



57.0904, 54.9300, 47.6387



88.1603, 90.6078, 93.0782



59.0339, 51.4912, 70.8712



18.7484, 19.2275, 19.6454



0.0000, 0.0000, 0.0000



20.3446, 21.4041, 23.3091

Same Dimension

The Same Dimension uses a secret algorithm to generate beautiful new colors.



57.0904, 54.9300, 47.6387



70.7642, 66.5326, 54.2403



63.0798, 66.9090, 49.6352



14.6628, 14.9395, 15.0152



19.3682, 11.3105, 1.1623



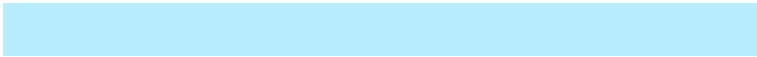
1.5030, 0.9794, 0.1098

Inverse Universe

The Inverse Universe completely reimagines the original color for something new.



55.3669, 62.6364, 81.8454



68.1452, 78.2084, 106.1118



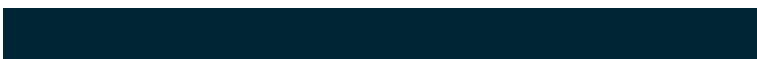
49.3331, 50.5689, 79.8342



14.4922, 15.7058, 18.4120



16.7088, 20.4797, 45.4555



1.3063, 1.6566, 3.3829

Previews

White Background



This preview shows how the XYZ color 57.0889, 54.9275, 47.6376 looks on a white background.

Color Contrast Check

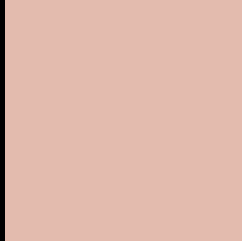
Large Text (above 18pt) WCAG AA × Fail

Any Text WCAG AA × Fail

Large Text (above 18pt) WCAG AAA × Fail

Any Text WCAG AAA × Fail

Black Background



This preview shows how the XYZ color 57.0889, 54.9275, 47.6376 looks on a black background.

Color Contrast Check

Large Text (above 18pt) WCAG AA ✓ Pass

Any Text WCAG AA ✓ Pass

Large Text (above 18pt) WCAG AAA ✓ Pass

Any Text WCAG AAA ✓ Pass

If you want to check with other color combinations, try the [Color Contrast Checker](#).

XYZ 57.0889, 54.9275, 47.6376

Background



This preview shows how black text looks on a background with the XYZ color 57.0889, 54.9275, 47.6376.



This preview shows how white text looks on a background with the XYZ color 57.0889, 54.9275,

Color Blindness Simulation

Color vision deficiency is a very complex topic, and I could not describe the different causes any better than Wikipedia does, so if you want to learn more, you should check out their [article about color blindness](#).

Dichromacy



Original Color

57.0889, 54.9275, 47.6376

Protanopia

52.1796, 54.9411, 49.9740

Deuteranopia

56.2690, 55.1392, 47.7216



Tritanopia

59.7597, 54.7672, 60.8475

Trichromacy



Original Color

57.0889, 54.9275, 47.6376

Protanomaly

53.9368, 54.8706, 49.3433

Deuteranomaly

56.3637, 54.8697, 47.6646

Tritanomaly

58.6389, 54.6131, 55.5949

Monochromacy



Original Color

57.0889, 54.9275, 47.6376

Achromatopsia

53.0703, 55.8340, 60.8033

Achromatomaly

54.2677, 55.2239, 55.9432

CSS Examples

Text

The CSS property to change the color of the text to XYZ 57.0889, 54.9275, 47.6376 is called "color". The color property can be set on classes, ids or directly on the HTML element.

This example shows how text in the color `rgb(227, 187, 174)` looks like.

```
.text, #text, p{  
    color:rgb(227, 187, 174)  
}
```

If you want to add a text shadow in that color use the text-shadow property, you can generate a text shadow directly with our [CSS Text Shadow Generator](#).

Here you see how black text with a 4 pixel rgb(227, 187, 174) colored shadow looks like.

```
.shadow{ text-shadow: 4px 4px 2px rgb(227, 187, 174) }
```

Border

The CSS property to change the border of an element to XYZ 57.0889, 54.9275, 47.6376 is called "border". The border property can be set on classes, ids or directly on the HTML element.

This example shows the color as border, it can be applied via the CSS property "border" or "border-color".

```
.border, #border, table{ border:4px solid rgb(227, 187, 174) }
```


If only the border color should be changed use the property `border-color`.

```
.border{ border-color:rgb(227, 187, 174) }
```

If you want to add a box shadow in that color use:

Here you see how a box with a 4 pixel `rgb(227, 187, 174)` colored shadow looks like.

```
.boxshadow{ -moz-box-shadow:4px 4px 4px  
4px rgb(227, 187, 174); -webkit-box-  
shadow:4px 4px 4px 4px rgb(227, 187, 174);  
box-shadow:4px 4px 4px 4px rgb(227, 187,  
174) }
```

Background

The CSS property to change the background color of an element to XYZ 57.0889, 54.9275, 47.6376 is called "background". The background property can be set on classes, ids or directly on the HTML element.

```
.background, #background, body{  
background: rgb(227, 187, 174) }
```

If only the background color should be changed can be used:

```
.background{ background-color: rgb(227,  
187, 174) }
```

This example shows the color as background, it is applied via the CSS property "background".

To optimize and compress your CSS code, you can use our [online CSS compressor and optimizer](#) based on csstidy. If you want to create a linear or radial gradient as background or border, check our [CSS Gradient Generator](#).

Hey! You found this booklet interesting? Support Converting Colors with the new Membership Option!

The pro membership hides all ads, plus gives you double the colors in the color bucket, and more awesome pro features!

[Learn more, Memberships starting at \\$2.50/m!](#)

**Follow me
on Twitter!**

@ConvertingColor