

Converting Colors

XYZ(57.0895, 57.0705, 53.9705)

Have a look what the booklet for
XYZ(57.0895, 57.0705, 53.9705)
contains.

XYZ(56.9622, 56.9918, 53.8972)	3
<i>Conversions</i>	4
<i>Details</i>	6
<i>Harmonies</i>	12
<i>Previews</i>	24
<i>Color Blindness Simulation</i>	28
<i>CSS Examples</i>	31

Color

**XYZ(56.9622, 56.9918,
53.8972)**

Conversions

Conversions Part 1

Format	Color
Hex	DAC2B9
RGB	218, 194, 185
RGB Percent	85%, 76%, 73%
CMY	0.1451, 0.2392, 0.2745
CMYK	0.00, 0.11, 0.15, 0.15
HSL	16°, 31%, 79%
HSV	16°, 15%, 85%
XYZ	56.9622, 56.9918, 53.8972
YIQ	200.1500, 17.1930, 2.2890

Conversions

Conversions Part 2

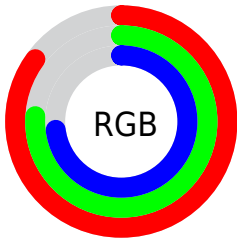
Format	Color
R _Y B	218, 197, 185
Decimal	14336697
CIE Lab	80.17, 7.01, 7.61
CIE LCh	80, 10.344, 47.364
Yxy	56.9918, 0.3394, 0.3395
Android (android.graphics.Color)	4292526777 (0xFFDAC2B9)
YUV	200.1500, -7.4690, 15.6544
Hunter-Lab	75.4929, 2.5723, 10.5157

Details

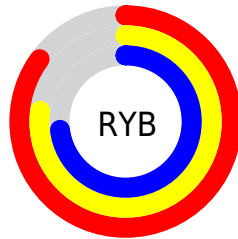
The XYZ color **56.9622, 56.9918, 53.8972** is a light color, and the websafe version is hex **CCCCCC**. A complement of this color would be **55.4626, 60.9758, 75.1765**, and the grayscale version is **55.0306, 57.8964, 63.0492**.

A 20% lighter version of the original color is **91.3028, 95.9821, 96.9333**, and **28.6472, 28.2086, 25.7647** is the 20% darker color. If you saturate the color by 10%, you get **51.4935, 49.4590, 41.5775**, and if you desaturate by 10%, it is **63.1633, 65.4236, 68.2033**.

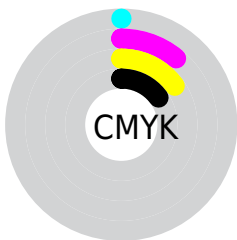
Distribution



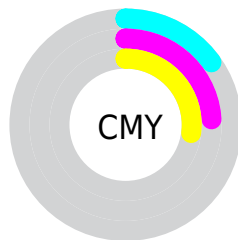
- Red (85%)
- Green (76%)
- Blue (73%)



- Red (85%)
- Yellow (77%)
- Blue (73%)



- Cyan (0%)
- Magenta (11%)
- Yellow (15%)
- Black (15%)





- Cyan (15%)
- Magenta (24%)
- Yellow (27%)

Brightness & Saturation Gradients

These gradients show how the XYZ color 56.9622, 56.9918, 53.8972 changes by changing the brightness by 10 percent. The first figure shows a shift by +10% for each color and the second figure -10%.


Similar to the brightness gradients but the following saturation gradients show a change of the XYZ color 56.9622, 56.9918, 53.8972 by changing the saturation by 10% instead.


 56.9622, 56.9918,
53.8972

 56.9622, 56.9918,
53.8972


403.3241,
413.4186, 418.8814

 41.2149, 40.9987,
38.1269


 99.5417, 100.4532,
97.3782

 28.6755, 28.3180,
25.7786


127.1046,
128.6903, 125.9259

 18.9785, 18.5655,
16.4338


159.3368,
161.7775, 159.5698

 11.7587, 11.3568,
9.6740

196.6036,
200.0991, 198.7285

 6.6506, 6.3073,
5.0806

239.2704,
244.0397, 243.8204

 3.2889, 3.0329,
2.2350

287.7025,

 1.3083, 1.1489,

293.9835, 295.2642

0.6945

342.2653,
350.3150, 353.4784

■ 0.1894, 0.0194,
0.0000

■ 0.0000, 0.0000,
0.0000

■ 56.9622, 56.9918,
53.8972

■ 56.9622, 56.9918,
53.8972

■ 51.4935, 49.4590,
41.5775

■ 63.1633, 65.4236,
68.2033

■ 46.7248, 42.7876,
31.1523

■ 70.1183, 74.7751,
84.5748

■ 42.6280, 36.9486,
22.5277

■ 77.8537, 85.0761,
103.0910

■ 39.1713, 31.9084,
15.6005

■ 82.7237, 93.6455,
108.3231

■ 36.3200, 27.6310,
10.2567

■ 34.0361, 24.0774,
6.3683

■ 32.2764, 21.2050,
3.7871

■ 30.9903, 18.9658,
2.3320

■ 30.5025, 18.0833,
1.8828

Harmonies

Analogous

The Analogous color harmony consists of three colors that are next to each other on the color wheel.



58.1320, 56.9918, 58.6528



56.9622, 56.9918, 53.8972



55.0609, 56.9918, 51.3985

Triad

The Triadic color harmony groups three colors that are evenly spaced from another and form a triangle on the color wheel.



56.9622, 56.9918, 53.8972



50.3079, 56.9918, 59.5485



55.3882, 56.9918, 73.8110

Complementary

The Complementary color scheme is a pair of colors which are on the opposite of each other on the color wheel.



56.9622, 56.9918, 53.8972



55.4626, 60.9758, 75.1765

Split Complementary

Split-complementary colors differ from the complementary color scheme. The scheme consists of three colors, the original color and two neighbors of the complement color.



53.2868, 56.9918, 74.0897



56.9622, 56.9918, 53.8972



50.3903, 56.9918, 65.5850

Square

The Square scheme is like the rectangle color scheme, but the four colors are evenly spaced on the color wheel.



56.9622, 56.9918, 53.8972



51.2404, 56.9918, 54.5162



51.4686, 56.9918, 70.9957



57.2071, 56.9918, 70.2573

Rectangle

The Rectangle color scheme consists of four colors that form a rectangle on the color wheel.



56.9622, 56.9918, 53.8972



53.6509, 56.9918, 51.2351



51.4686, 56.9918, 70.9957



54.6904, 56.9918, 74.2987

Sweetspot

The Sweet Spot groups the original color and five complimentary colors.



56.9638, 56.9943, 53.8984



90.1780, 93.4325, 97.4828



57.7965, 54.2175, 67.8709



19.1600, 19.8066, 20.5348



0.0000, 0.0000, 0.0000



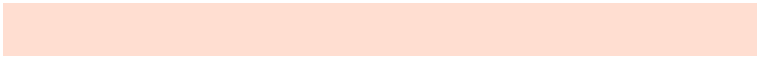
20.3446, 21.4041, 23.3091

Same Dimension

The Same Dimension uses a secret algorithm to generate beautiful new colors.



56.9638, 56.9943, 53.8984



78.7825, 77.9114, 71.2727



60.7917, 64.6503, 55.1744



13.3437, 13.6268, 13.6525



18.3512, 10.9880, 1.1537



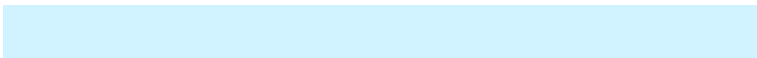
1.2601, 0.8543, 0.0985

Inverse Universe

The Inverse Universe completely reimagines the original color for something new.



55.4626, 60.9758, 75.1765



76.2668, 84.5779, 106.9132



51.6669, 53.3844, 73.9113



13.1288, 14.1974, 16.7005



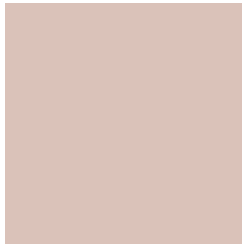
15.0536, 17.9767, 42.4148



1.0455, 1.3052, 2.7713

Previews

White Background



This preview shows how the XYZ color 56.9622, 56.9918, 53.8972 looks on a white background.

Color Contrast Check

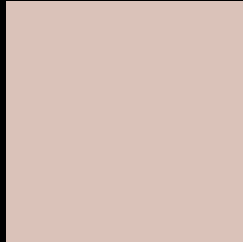
Large Text (above 18pt) WCAG AA × Fail

Any Text WCAG AA × Fail

Large Text (above 18pt) WCAG AAA × Fail

Any Text WCAG AAA × Fail

Black Background



This preview shows how the XYZ color 56.9622, 56.9918, 53.8972 looks on a black background.

Color Contrast Check

Large Text (above 18pt) WCAG AA ✓ Pass

Any Text WCAG AA ✓ Pass

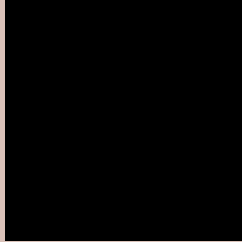
Large Text (above 18pt) WCAG AAA ✓ Pass

Any Text WCAG AAA ✓ Pass

If you want to check with other color combinations, try the [Color Contrast Checker](#).

XYZ 56.9622, 56.9918, 53.8972

Background



This preview shows how black text looks on a background with the XYZ color 56.9622, 56.9918, 53.8972.



This preview shows how white text looks on a background with the XYZ color 56.9622, 56.9918,

Color Blindness Simulation

Color vision deficiency is a very complex topic, and I could not describe the different causes any better than Wikipedia does, so if you want to learn more, you should check out their [article about color blindness](#).

Dichromacy



Original Color

56.9622, 56.9918, 53.8972

Protanopia

54.3406, 56.9552, 55.1431

Deuteranopia

58.0380, 56.8900, 53.8209



Tritanopia

59.5902, 57.0900, 66.2712

Trichromacy



Original Color

56.9622, 56.9918, 53.8972

Protanomaly

55.4075, 57.1793, 54.5708

Deuteranomaly

57.6457, 57.0149, 53.8657

Tritanomaly

58.5579, 56.9921, 61.3403

Monochromacy



Original Color

56.9622, 56.9918, 53.8972

Achromatopsia

54.8990, 57.7580, 62.8985

Achromatomaly

55.7765, 57.5937, 59.8067

CSS Examples

Text

The CSS property to change the color of the text to XYZ 56.9622, 56.9918, 53.8972 is called "color". The color property can be set on classes, ids or directly on the HTML element.

This example shows how text in the color rgb(218, 194, 185) looks like.

```
.text, #text, p{  
    color:rgb(218, 194, 185)  
}
```

If you want to add a text shadow in that color use the text-shadow property, you can generate a text shadow directly with our [CSS Text Shadow Generator](#).

Here you see how black text with a 4 pixel rgb(218, 194, 185) colored shadow looks like.

```
.shadow{ text-shadow: 4px 4px 2px rgb(218, 194, 185) }
```

Border

The CSS property to change the border of an element to XYZ 56.9622, 56.9918, 53.8972 is called "border". The border property can be set on classes, ids or directly on the HTML element.

This example shows the color as border, it can be applied via the CSS property "border" or "border-color".

```
.border, #border, table{ border:4px solid rgb(218, 194, 185) }
```


If only the border color should be changed use the property `border-color`.

```
.border{ border-color:rgb(218, 194, 185) }
```

If you want to add a box shadow in that color use:

Here you see how a box with a 4 pixel `rgb(218, 194, 185)` colored shadow looks like.

```
.boxshadow{ -moz-box-shadow:4px 4px 4px  
4px rgb(218, 194, 185); -webkit-box-  
shadow:4px 4px 4px 4px rgb(218, 194, 185);  
box-shadow:4px 4px 4px 4px rgb(218, 194,  
185) }
```

Background

The CSS property to change the background color of an element to XYZ 56.9622, 56.9918, 53.8972 is called "background". The background property can be set on classes, ids or directly on the HTML element.

```
.background, #background, body{  
background: rgb(218, 194, 185) }
```

If only the background color should be changed can be used:

```
.background{ background-color: rgb(218,  
194, 185) }
```

This example shows the color as background, it is applied via the CSS property "background".

To optimize and compress your CSS code, you can use our [online CSS compressor and optimizer](#) based on csstidy. If you want to create a linear or radial gradient as background or border, check our [CSS Gradient Generator](#).

Hey! You found this booklet interesting? Support Converting Colors with the new Membership Option!

The pro membership hides all ads, plus gives you double the colors in the color bucket, and more awesome pro features!

[Learn more, Memberships starting at \\$2.50/m!](#)

**Follow me
on Twitter!**

@ConvertingColor