

Converting Colors

XYZ(57.1359, 55.4829, 54.3700)

Have a look what the booklet for
XYZ(57.1359, 55.4829, 54.3700)
contains.

XYZ(57.1847, 55.4700, 54.1472)	3
<i>Conversions</i>	4
<i>Details</i>	6
<i>Harmonies</i>	12
<i>Previews</i>	24
<i>Color Blindness Simulation</i>	28
<i>CSS Examples</i>	31

Color

**XYZ(57.1847, 55.4700,
54.1472)**

Conversions

Conversions Part 1

Format	Color
Hex	DEBDBA
RGB	222, 189, 186
RGB Percent	87%, 74%, 73%
CMY	0.1294, 0.2588, 0.2706
CMYK	0.00, 0.15, 0.16, 0.13
HSL	5°, 35%, 80%
HSV	5°, 16%, 87%
XYZ	57.1847, 55.4700, 54.1472
YIQ	198.5250, 20.6310, 6.0630

Conversions

Conversions Part 2

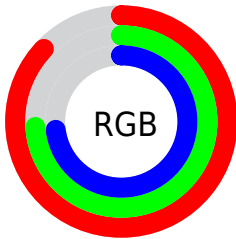
Format	Color
R _Y B	222, 189, 186
Decimal	14597562
CIE Lab	79.31, 11.28, 5.88
CIE LCh	79, 12.717, 27.522
Yxy	55.4700, 0.3428, 0.3326
Android (android.graphics.Color)	4292787642 (0xFFDEBDBA)
YUV	198.5250, -6.1748, 20.5876
Hunter-Lab	74.4782, 6.7163, 9.0297

Details

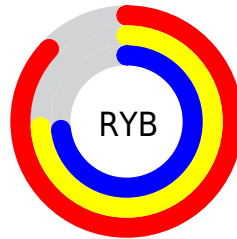
The XYZ color **57.1847, 55.4700, 54.1472** is a light color, and the websafe version is hex **FFCCCC**. A complement of this color would be **58.7655, 66.3744, 78.8219**, and the grayscale version is **54.0250, 56.8385, 61.8971**.

A 20% lighter version of the original color is **89.9194, 92.9756, 97.2112**, and **28.7637, 27.4088, 25.9647** is the 20% darker color. If you saturate the color by 10%, you get **50.9317, 46.4517, 41.3097**, and if you desaturate by 10%, it is **64.4215, 65.8680, 69.1229**.

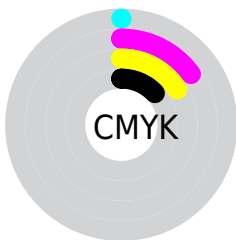
Distribution



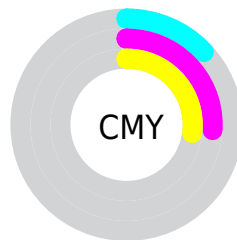
- Red (87%)
- Green (74%)
- Blue (73%)



- Red (87%)
- Yellow (74%)
- Blue (73%)



- Cyan (0%)
- Magenta (15%)
- Yellow (16%)
- Black (13%)



- Cyan (13%)
- Magenta (26%)
- Yellow (27%)

Brightness & Saturation Gradients

These gradients show how the XYZ color 57.1847, 55.4700, 54.1472 changes by changing the brightness by 10 percent. The first figure shows a shift by +10% for each color and the second figure -10%.

Similar to the brightness gradients but the following saturation gradients show a change of the XYZ color 57.1847, 55.4700, 54.1472 by changing the saturation by 10% instead.

■ 57.1847, 55.4700,
54.1472

■ 57.1847, 55.4700,
54.1472

404.1440,
407.6911, 419.8616

■ 41.3943, 39.7781,
38.3254

■ 99.8644, 98.2292,
97.7489

■ 28.8163, 27.3656,
25.9315

127.4845,
126.0654, 126.3659

■ 19.0855, 17.8480,
16.5471

159.7784,
158.7185, 160.0850

■ 11.8364, 10.8409,
9.7536

197.1116,
196.5728, 199.3248

■ 6.7038, 5.9600,
5.1324

239.8494,
240.0129, 244.5038

■ 3.3222, 2.8207,
2.2651

288.3572,

■ 1.3264, 1.0389,

289.4230, 296.0406

0.7116

343.0003,
345.1876, 354.3537

■ 0.2028, 0.0000,
0.0000

■ 0.0000, 0.0000,
0.0000

■ 57.1847, 55.4700,
54.1472

■ 57.1847, 55.4700,
54.1472

■ 50.9317, 46.4517,
41.3097

■ 64.4215, 65.8680,
69.1229

■ 45.6157, 38.7481,
30.5094

■ 72.6773, 77.6925,
86.3245

■ 41.1927, 32.3000,
21.6428

■ 81.9910, 90.9971,
105.8389

■ 37.6136, 27.0408,
14.5954

■ 83.9344, 94.2697,
108.3798

■ 34.8244, 22.8976,
9.2410

■ 32.7649, 19.7898,
5.4371

■ 31.3660, 17.6256,
3.0178

■ 30.5448, 16.2969,
1.7770

■ 30.3493, 15.9795,
1.4848

Harmonies

Analogous

The Analogous color harmony consists of three colors that are next to each other on the color wheel.



57.7667, 55.4700, 61.0057



57.1847, 55.4700, 54.1472



55.3955, 55.4700, 49.3243

Triad

The Triadic color harmony groups three colors that are evenly spaced from another and form a triangle on the color wheel.



57.1847, 55.4700, 54.1472



48.6993, 55.4700, 53.1767



52.5112, 55.4700, 75.5167

Complementary

The Complementary color scheme is a pair of colors which are on the opposite of each other on the color wheel.



57.1847, 55.4700, 54.1472



58.7655, 66.3744, 78.8219

Split Complementary

Split-complementary colors differ from the complementary color scheme. The scheme consists of three colors, the original color and two neighbors of the complement color.



50.1370, 55.4700, 73.0148



57.1847, 55.4700, 54.1472



47.9810, 55.4700, 59.7931

Square

The Square scheme is like the rectangle color scheme, but the four colors are evenly spaced on the color wheel.



57.1847, 55.4700, 54.1472



50.4925, 55.4700, 48.7965



48.4988, 55.4700, 67.1110



55.0174, 55.4700, 73.7050

Rectangle

The Rectangle color scheme consists of four colors that form a rectangle on the color wheel.



57.1847, 55.4700, 54.1472



53.7875, 55.4700, 47.7155



48.4988, 55.4700, 67.1110



51.6718, 55.4700, 75.1481

Sweetspot

The Sweet Spot groups the original color and five complimentary colors.



57.1862, 55.4725, 54.1484



89.4492, 91.9751, 97.2399



60.4698, 55.7626, 74.5944



18.9835, 19.4537, 20.4760



0.0000, 0.0000, 0.0000



20.3446, 21.4041, 23.3091

Same Dimension

The Same Dimension uses a secret algorithm to generate beautiful new colors.



57.1862, 55.4725, 54.1484



75.6409, 72.1297, 68.6792



61.3005, 63.7010, 55.5198



13.7987, 13.8834, 14.2593



18.0596, 9.5570, 0.8928



1.2841, 0.7271, 0.0727

Inverse Universe

The Inverse Universe completely reimagines the original color for something new.



58.7655, 66.3744, 78.8219



78.1402, 89.3880, 107.7429



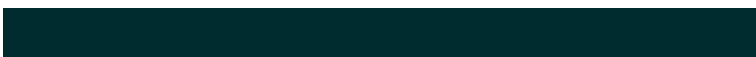
54.3218, 57.4870, 77.3406



14.0136, 15.3664, 17.6151



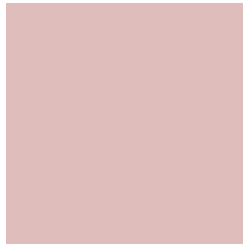
20.6231, 28.7157, 45.5041



1.4587, 2.0490, 3.1638

Previews

White Background



This preview shows how the XYZ color 57.1847, 55.4700, 54.1472 looks on a white background.

Color Contrast Check

Large Text (above 18pt) WCAG AA × Fail

Any Text WCAG AA × Fail

Large Text (above 18pt) WCAG AAA × Fail

Any Text WCAG AAA × Fail

Black Background



This preview shows how the XYZ color 57.1847, 55.4700, 54.1472 looks on a black background.

Color Contrast Check

Large Text (above 18pt) WCAG AA ✓ Pass

Any Text WCAG AA ✓ Pass

Large Text (above 18pt) WCAG AAA ✓ Pass

Any Text WCAG AAA ✓ Pass

If you want to check with other color combinations, try the [Color Contrast Checker](#).

XYZ 57.1847, 55.4700, 54.1472

Background



This preview shows how black text looks on a background with the XYZ color 57.1847, 55.4700, 54.1472.

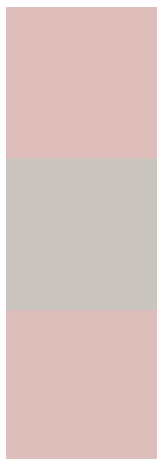


This preview shows how white text looks on a background with the XYZ color 57.1847, 55.4700,

Color Blindness Simulation

Color vision deficiency is a very complex topic, and I could not describe the different causes any better than Wikipedia does, so if you want to learn more, you should check out their [article about color blindness](#).

Dichromacy



Original Color

57.1847, 55.4700, 54.1472

Protanopia

53.3913, 55.7541, 56.6628

Deuteranopia

56.7916, 55.5877, 54.1906



Tritanopia

59.0534, 55.6050, 62.8787

Trichromacy



Original Color

57.1847, 55.4700, 54.1472

Protanomaly

54.5498, 55.3694, 55.9564

Deuteranomaly

57.0952, 55.7442, 54.2048

Tritanomaly

58.3785, 55.6399, 59.8873

Monochromacy



Original Color

57.1847, 55.4700, 54.1472

Achromatopsia

54.2854, 57.1125, 62.1955

Achromatomaly

54.9848, 56.1907, 58.9868

CSS Examples

Text

The CSS property to change the color of the text to XYZ 57.1847, 55.4700, 54.1472 is called "color". The color property can be set on classes, ids or directly on the HTML element.

This example shows how text in the color `rgb(222, 189, 186)` looks like.

```
.text, #text, p{  
    color:rgb(222, 189, 186)  
}
```

If you want to add a text shadow in that color use the text-shadow property, you can generate a text shadow directly with our [CSS Text Shadow Generator](#).

Here you see how black text with a 4 pixel rgb(222, 189, 186) colored shadow looks like.

```
.shadow{ text-shadow: 4px 4px 2px rgb(222, 189, 186) }
```

Border

The CSS property to change the border of an element to XYZ 57.1847, 55.4700, 54.1472 is called "border". The border property can be set on classes, ids or directly on the HTML element.

This example shows the color as border, it can be applied via the CSS property "border" or "border-color".

```
.border, #border, table{ border:4px solid rgb(222, 189, 186) }
```


If only the border color should be changed use the property `border-color`.

```
.border{ border-color:rgb(222, 189, 186) }
```

If you want to add a box shadow in that color use:

Here you see how a box with a 4 pixel `rgb(222, 189, 186)` colored shadow looks like.

```
.boxshadow{ -moz-box-shadow:4px 4px 4px  
4px rgb(222, 189, 186); -webkit-box-  
shadow:4px 4px 4px 4px rgb(222, 189, 186);  
box-shadow:4px 4px 4px 4px rgb(222, 189,  
186) }
```

Background

The CSS property to change the background color of an element to XYZ 57.1847, 55.4700, 54.1472 is called "background". The background property can be set on classes, ids or directly on the HTML element.

```
.background, #background, body{  
background: rgb(222, 189, 186) }
```

If only the background color should be changed can be used:

```
.background{ background-color: rgb(222,  
189, 186) }
```

This example shows the color as background, it is applied via the CSS property "background".

To optimize and compress your CSS code, you can use our [online CSS compressor and optimizer](#) based on csstidy. If you want to create a linear or radial gradient as background or border, check our [CSS Gradient Generator](#).

Hey! You found this booklet interesting? Support Converting Colors with the new Membership Option!

The pro membership hides all ads, plus gives you double the colors in the color bucket, and more awesome pro features!

[Learn more, Memberships starting at \\$2.50/m!](#)

**Follow me
on Twitter!**

@ConvertingColor