

Converting Colors

XYZ(57.1773, 51.3873, 58.5005)

Have a look what the booklet for
XYZ(57.1773, 51.3873, 58.5005)
contains.

XYZ(57.0542, 51.3217, 58.5288)	3
<i>Conversions</i>	4
<i>Details</i>	6
<i>Harmonies</i>	12
<i>Previews</i>	24
<i>Color Blindness Simulation</i>	28
<i>CSS Examples</i>	31

Color

**XYZ(57.0542, 51.3217,
58.5288)**

Conversions

Conversions Part 1

Format	Color
Hex	E3B0C3
RGB	227, 176, 195
RGB Percent	89%, 69%, 76%
CMY	0.1098, 0.3098, 0.2353
CMYK	0.00, 0.22, 0.14, 0.11
HSL	338°, 48%, 79%
HSV	338°, 22%, 89%
XYZ	57.0542, 51.3217, 58.5288
YIQ	193.4150, 24.2970, 16.7210

Conversions

Conversions Part 2

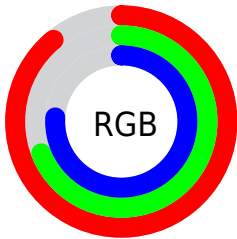
Format	Color
R _Y B	227, 176, 195
Decimal	14921923
CIE Lab	76.87, 21.46, -2.49
CIE LCh	77, 21.608, 353.381
Yxy	51.3217, 0.3418, 0.3075
Android (android.graphics.Color)	4293112003 (0xFFE3B0C3)
YUV	193.4150, 0.7814, 29.4540
Hunter-Lab	71.6392, 16.7908, 1.7078

Details

The XYZ color **57.0542, 51.3217, 58.5288** is a light color, and the websafe version is hex **CC9999**. A complement of this color would be **56.7608, 68.7236, 69.9511**, and the grayscale version is **50.9195, 53.5713, 58.3391**.

A 20% lighter version of the original color is **87.6673, 86.0015, 104.0748**, and **28.6853, 24.7469, 28.4641** is the 20% darker color. If you saturate the color by 10%, you get **51.4356, 42.5398, 49.0855**, and if you desaturate by 10%, it is **63.5736, 61.6581, 69.0316**.

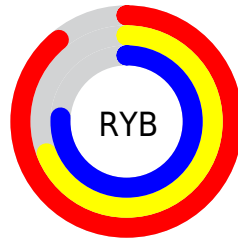
Distribution



Red (89%)

Green (69%)

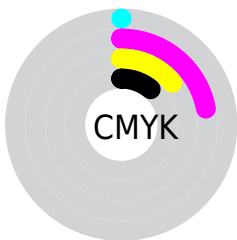
Blue (76%)



Red (89%)

Yellow (69%)

Blue (76%)

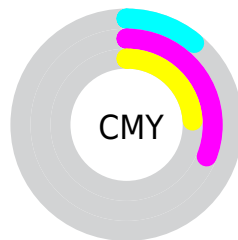


Cyan (0%)

Magenta (22%)

Yellow (14%)

Black (11%)



Cyan (11%)

Magenta (31%)

Yellow (24%)

Brightness & Saturation Gradients

These gradients show how the XYZ color 57.0542, 51.3217, 58.5288 changes by changing the brightness by 10 percent. The first figure shows a shift by +10% for each color and the second figure -10%.

Similar to the brightness gradients but the following saturation gradients show a change of the XYZ color 57.0542, 51.3217, 58.5288 by changing the saturation by 10% instead.

■ 57.0542, 51.3217,
58.5288

■ 57.0542, 51.3217,
58.5288

403.6633,
391.8124, 436.8066

■ 41.2891, 36.4647,
41.8164

■ 99.6752, 92.1301,
104.2149

■ 28.7337, 24.7933,
28.6331

127.2617,
118.8503, 134.0257

■ 19.0227, 15.9231,
18.5602

159.5194,
150.2937, 169.0397

■ 11.7908, 9.4698,
11.1794

196.8137,
186.8447, 209.6754

■ 6.6726, 5.0488,
6.0719

239.5099,
228.8877, 256.3514

■ 3.3027, 2.2759,
2.8194

287.9733,

■ 1.3158, 0.7609,

276.8070, 309.4863

1.0032

342.5693,
330.9871, 369.4985

■ 0.1950, 0.0000,
0.0000

■ 0.0000, 0.0000,
0.0000

■ 57.0542, 51.3217,
58.5288

■ 57.0542, 51.3217,
58.5288

■ 51.4356, 42.5398,
49.0855

■ 63.5736, 61.6581,
69.0316

■ 46.6722, 35.2298,
40.6636

■ 71.0279, 73.6126,
80.6238

■ 42.7209, 29.3120,
33.2273

■ 79.4548, 87.2534,
93.3381

■ 39.5327, 24.6960,
26.7371

■ 85.0060, 94.8779,
105.9105

■ 37.0532, 21.2811,
21.1506

■ 85.4888, 95.0710,
108.4525

■ 35.2203, 18.9512,
16.4213

■ 33.9597, 17.5667,
12.4969

■ 33.3010, 16.9799,
10.0248

Harmonies

Analogous

The Analogous color harmony consists of three colors that are next to each other on the color wheel.



55.3982, 51.3217, 70.4895



57.0542, 51.3217, 58.5288



56.3952, 51.3217, 47.3753

Triad

The Triadic color harmony groups three colors that are evenly spaced from another and form a triangle on the color wheel.



57.0542, 51.3217, 58.5288



45.7117, 51.3217, 37.5821



44.2182, 51.3217, 76.0749

Complementary

The Complementary color scheme is a pair of colors which are on the opposite of each other on the color wheel.



57.0542, 51.3217, 58.5288



56.7608, 68.7236, 69.9511

Split Complementary

Split-complementary colors differ from the complementary color scheme. The scheme consists of three colors, the original color and two neighbors of the complement color.



41.8827, 51.3217, 65.3474



57.0542, 51.3217, 58.5288



42.7106, 51.3217, 43.4439

Square

The Square scheme is like the rectangle color scheme, but the four colors are evenly spaced on the color wheel.



57.0542, 51.3217, 58.5288



49.6959, 51.3217, 36.2870



41.3467, 51.3217, 53.3135



47.8749, 51.3217, 81.4983

Rectangle

The Rectangle color scheme consists of four colors that form a rectangle on the color wheel.



57.0542, 51.3217, 58.5288



54.7488, 51.3217, 41.7384



41.3467, 51.3217, 53.3135



43.2611, 51.3217, 72.9030

Sweetspot

The Sweet Spot groups the original color and five complimentary colors.



57.0557, 51.3240, 58.5299



87.8663, 88.4347, 97.8667



55.2504, 49.9296, 79.3989



18.6807, 18.7260, 20.7511



0.0000, 0.0000, 0.0000



20.3446, 21.4041, 23.3091

Same Dimension

The Same Dimension uses a secret algorithm to generate beautiful new colors.



57.0557, 51.3240, 58.5299



70.6886, 61.1843, 70.2370



56.2345, 52.9033, 48.3246



14.5979, 14.4563, 16.0829



19.4730, 9.9234, 6.1196



1.4828, 0.7508, 0.6828

Inverse Universe

The Inverse Universe completely reimagines the original color for something new.



57.0557, 51.3240, 58.5299



70.6886, 61.1843, 70.2370



57.6410, 66.5168, 82.4746



14.5979, 14.4563, 16.0829



19.4730, 9.9234, 6.1196



1.4828, 0.7508, 0.6828

Previews

White Background



This preview shows how the XYZ color 57.0542, 51.3217, 58.5288 looks on a white background.

Color Contrast Check

Large Text (above 18pt) WCAG AA × Fail

Any Text WCAG AA × Fail

Large Text (above 18pt) WCAG AAA × Fail

Any Text WCAG AAA × Fail

Black Background



This preview shows how the XYZ color 57.0542, 51.3217, 58.5288 looks on a black background.

Color Contrast Check

Large Text (above 18pt) WCAG AA ✓ Pass

Any Text WCAG AA ✓ Pass

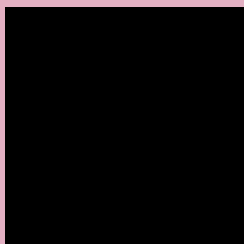
Large Text (above 18pt) WCAG AAA ✓ Pass

Any Text WCAG AAA ✓ Pass

If you want to check with other color combinations, try the [Color Contrast Checker](#).

XYZ 57.0542, 51.3217, 58.5288

Background



This preview shows how black text looks on a background with the XYZ color 57.0542, 51.3217, 58.5288.



This preview shows how white text looks on a background with the XYZ color 57.0542, 51.3217,

Color Blindness Simulation

Color vision deficiency is a very complex topic, and I could not describe the different causes any better than Wikipedia does, so if you want to learn more, you should check out their [article about color blindness](#).

Dichromacy



Original Color

57.0542, 51.3217, 58.5288

Protanopia

50.2123, 51.6541, 63.8237

Deuteranopia

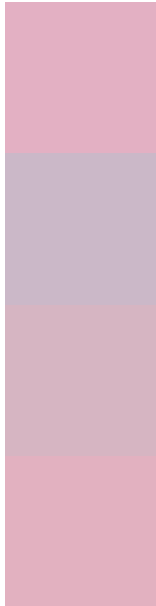
52.4983, 51.3966, 57.6057



Tritanopia

56.3804, 51.3307, 55.6514

Trichromacy



Original Color

57.0542, 51.3217, 58.5288

Protanomaly

52.1944, 51.1476, 61.7651

Deuteranomaly

53.9930, 51.2389, 58.0833

Tritanomaly

56.6006, 51.4188, 56.8108

Monochromacy



Original Color

57.0542, 51.3217, 58.5288

Achromatopsia

50.6879, 53.3276, 58.0738

Achromatomaly

52.6848, 52.4148, 58.3792

CSS Examples

Text

The CSS property to change the color of the text to XYZ 57.0542, 51.3217, 58.5288 is called "color". The color property can be set on classes, ids or directly on the HTML element.

This example shows how text in the color `rgb(227, 176, 195)` looks like.

```
.text, #text, p{  
    color:rgb(227, 176, 195)  
}
```

If you want to add a text shadow in that color use the text-shadow property, you can generate a text shadow directly with our [CSS Text Shadow Generator](#).

Here you see how black text with a 4 pixel rgb(227, 176, 195) colored shadow looks like.

```
.shadow{ text-shadow: 4px 4px 2px rgb(227, 176, 195) }
```

Border

The CSS property to change the border of an element to XYZ 57.0542, 51.3217, 58.5288 is called "border". The border property can be set on classes, ids or directly on the HTML element.

This example shows the color as border, it can be applied via the CSS property "border" or "border-color".

```
.border, #border, table{ border:4px solid rgb(227, 176, 195) }
```


If only the border color should be changed use the property `border-color`.

```
.border{ border-color:rgb(227, 176, 195) }
```

If you want to add a box shadow in that color use:

Here you see how a box with a 4 pixel `rgb(227, 176, 195)` colored shadow looks like.

```
.boxshadow{ -moz-box-shadow:4px 4px 4px 4px rgb(227, 176, 195); -webkit-box-shadow:4px 4px 4px 4px rgb(227, 176, 195); box-shadow:4px 4px 4px 4px rgb(227, 176, 195) }
```

Background

The CSS property to change the background color of an element to XYZ 57.0542, 51.3217, 58.5288 is called "background". The background property can be set on classes, ids or directly on the HTML element.

```
.background, #background, body{  
background: rgb(227, 176, 195) }
```

If only the background color should be changed can be used:

```
.background{ background-color: rgb(227,  
176, 195) }
```

This example shows the color as background, it is applied via the CSS property "background".

To optimize and compress your CSS code, you can use our [online CSS compressor and optimizer](#) based on csstidy. If you want to create a linear or radial gradient as background or border, check our [CSS Gradient Generator](#).

Hey! You found this booklet interesting? Support Converting Colors with the new Membership Option!

The pro membership hides all ads, plus gives you double the colors in the color bucket, and more awesome pro features!

[Learn more, Memberships starting at \\$2.50/m!](#)

**Follow me
on Twitter!**

@ConvertingColor