

Converting Colors

XYZ(57.1991, 56.9027, 58.5121)

Have a look what the booklet for
XYZ(57.1991, 56.9027, 58.5121)
contains.

XYZ(57.2363, 57.0328, 58.4438)	3
<i>Conversions</i>	4
<i>Details</i>	6
<i>Harmonies</i>	12
<i>Previews</i>	24
<i>Color Blindness Simulation</i>	28
<i>CSS Examples</i>	31

Color

**XYZ(57.2363, 57.0328,
58.4438)**

Conversions

Conversions Part 1

Format	Color
Hex	D8C2C1
RGB	216, 194, 193
RGB Percent	85%, 76%, 76%
CMY	0.1529, 0.2392, 0.2431
CMYK	0.00, 0.10, 0.11, 0.15
HSL	3°, 23%, 80%
HSV	3°, 11%, 85%
XYZ	57.2363, 57.0328, 58.4438
YIQ	200.4640, 13.4330, 4.3530

Conversions

Conversions Part 2

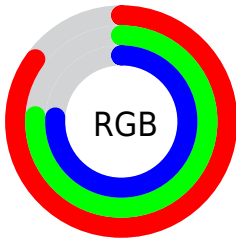
Format	Color
R _Y B	216, 194, 193
Decimal	14205633
CIE Lab	80.20, 7.58, 3.32
CIE LCh	80, 8.277, 23.649
Yxy	57.0328, 0.3314, 0.3302
Android (android.graphics.Color)	4292395713 (0xFFD8C2C1)
YUV	200.4640, -3.6798, 13.6251
Hunter-Lab	75.5201, 3.1242, 6.9804

Details

The XYZ color **57.2363, 57.0328, 58.4438** is a light color, and the websafe version is hex **CCCCCC**. A complement of this color would be **58.6870, 64.8947, 74.3990**, and the grayscale version is **55.2033, 58.0782, 63.2472**.

A 20% lighter version of the original color is **92.5245, 96.4708, 103.3667**, and **28.8096, 28.2267, 28.7408** is the 20% darker color. If you saturate the color by 10%, you get **50.7186, 47.5755, 45.2388**, and if you desaturate by 10%, it is **64.7483, 67.9140, 73.7179**.

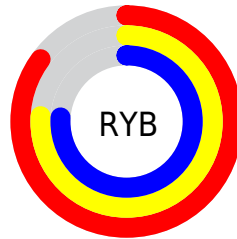
Distribution



Red (85%)

Green (76%)

Blue (76%)



Red (85%)

Yellow (76%)

Blue (76%)

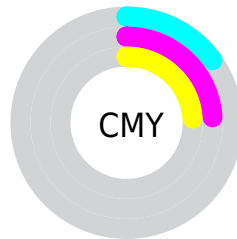


Cyan (0%)

Magenta (10%)

Yellow (11%)

Black (15%)



Cyan (15%)


Magenta (24%)


Yellow (24%)

Brightness & Saturation Gradients


These gradients show how the XYZ color 57.2363, 57.0328, 58.4438 changes by changing the brightness by 10 percent. The first figure shows a shift by +10% for each color and the second figure -10%.


Similar to the brightness gradients but the following saturation gradients show a change of the XYZ color 57.2363, 57.0328, 58.4438 by changing the saturation by 10% instead.


 57.2363, 57.0328,
58.4438

 57.2363, 57.0328,
58.4438


404.3340,
413.5722, 436.4820

 41.4359, 41.0316,
41.7485


 99.9393, 100.5130,
104.0900

 28.8490, 28.3438,
28.5803


127.5725,
128.7609, 133.8780

 19.1103, 18.5850,
18.5207


159.8807,
161.8597, 168.8672

 11.8545, 11.3708,
11.1512

197.2293,
200.1938, 209.4763

 6.7162, 6.3168,
6.0532

239.9836,
244.1478, 256.1238

 3.3300, 3.0387,
2.8081

288.5089,

 1.3306, 1.1519,

294.1059, 309.2282

0.9975

343.1706,
350.4526, 369.2081

0.2059, 0.0219,
0.0000

0.0000, 0.0000,
0.0000

57.2363, 57.0328,
58.4438

57.2363, 57.0328,
58.4438

50.7186, 47.5755,
45.2388

64.7483, 67.9140,
73.7179

45.1489, 39.4761,
34.0103

73.2887, 80.2667,
91.1408

40.4845, 32.6746,
24.6646

82.1291, 93.3390,
108.2953

36.6777, 27.1035,
17.0985

■ 33.6760, 22.6893,
11.1991

■ 31.4216, 19.3506,
6.8405

■ 29.8488, 16.9955,
3.8791

■ 28.8804, 15.5167,
2.1441

■ 28.4215, 14.8037,
1.3594

Harmonies

Analogous

The Analogous color harmony consists of three colors that are next to each other on the color wheel.



57.4987, 57.0328, 63.1331



57.2363, 57.0328, 58.4438



56.1550, 57.0328, 54.9081

Triad

The Triadic color harmony groups three colors that are evenly spaced from another and form a triangle on the color wheel.



57.2363, 57.0328, 58.4438



51.6352, 57.0328, 56.7498



53.8497, 57.0328, 71.8049

Complementary

The Complementary color scheme is a pair of colors which are on the opposite of each other on the color wheel.



57.2363, 57.0328, 58.4438



58.6870, 64.8947, 74.3990

Split Complementary

Split-complementary colors differ from the complementary color scheme. The scheme consists of three colors, the original color and two neighbors of the complement color.



52.3065, 57.0328, 69.8919



57.2363, 57.0328, 58.4438



51.0452, 57.0328, 61.0763

Square

The Square scheme is like the rectangle color scheme, but the four colors are evenly spaced on the color wheel.



57.2363, 57.0328, 58.4438



52.9162, 57.0328, 53.9661



51.2884, 57.0328, 65.9036



55.5206, 57.0328, 71.0105

Rectangle

The Rectangle color scheme consists of four colors that form a rectangle on the color wheel.



57.2363, 57.0328, 58.4438



55.1270, 57.0328, 53.5984



51.2884, 57.0328, 65.9036



53.2992, 57.0328, 71.4541

Sweetspot

The Sweet Spot groups the original color and five complimentary colors.



57.2379, 57.0353, 58.4450



91.5529, 94.9377, 101.7786



59.6852, 57.6579, 72.4311



19.4010, 20.0381, 21.3878



0.0000, 0.0000, 0.0000



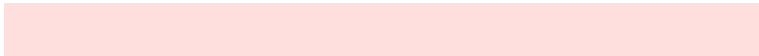
20.3446, 21.4041, 23.3091

Same Dimension

The Same Dimension uses a secret algorithm to generate beautiful new colors.



57.2379, 57.0353, 58.4450



80.8719, 79.4602, 80.0768



59.8403, 62.2402, 59.3125



12.4663, 12.5068, 12.9177



16.8429, 8.8030, 0.8114



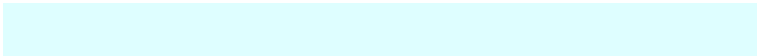
1.0315, 0.5623, 0.0542

Inverse Universe

The Inverse Universe completely reimagines the original color for something new.



58.6870, 64.8947, 74.3990



83.4283, 93.3261, 108.2243



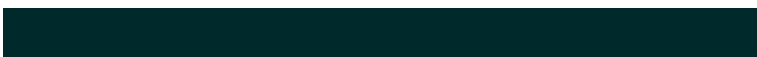
55.9172, 59.3551, 73.4758



12.7436, 14.0106, 15.9702



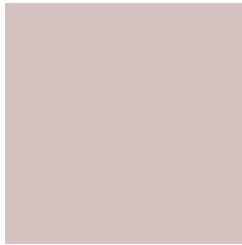
20.5032, 29.2682, 43.0219



1.2514, 1.7947, 2.5998

Previews

White Background



This preview shows how the XYZ color 57.2363, 57.0328, 58.4438 looks on a white background.

Color Contrast Check

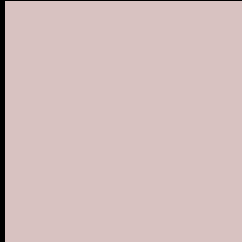
Large Text (above 18pt) WCAG AA × Fail

Any Text WCAG AA × Fail

Large Text (above 18pt) WCAG AAA × Fail

Any Text WCAG AAA × Fail

Black Background



This preview shows how the XYZ color 57.2363, 57.0328, 58.4438 looks on a black background.

Color Contrast Check

Large Text (above 18pt) WCAG AA ✓ Pass

Any Text WCAG AA ✓ Pass

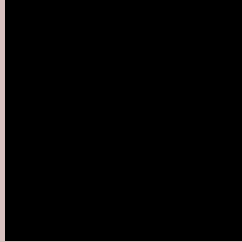
Large Text (above 18pt) WCAG AAA ✓ Pass

Any Text WCAG AAA ✓ Pass

If you want to check with other color combinations, try the [Color Contrast Checker](#).

XYZ 57.2363, 57.0328, 58.4438

Background



This preview shows how black text looks on a background with the XYZ color 57.2363, 57.0328, 58.4438.



This preview shows how white text looks on a background with the XYZ color 57.2363, 57.0328,

Color Blindness Simulation

Color vision deficiency is a very complex topic, and I could not describe the different causes any better than Wikipedia does, so if you want to learn more, you should check out their [article about color blindness](#).

Dichromacy



Original Color

57.2363, 57.0328, 58.4438

Protanopia

54.6730, 57.0248, 59.7551

Deuteranopia

57.9905, 56.7652, 58.3524



Tritanopia

59.0256, 57.1097, 66.9438

Trichromacy



Original Color

57.2363, 57.0328, 58.4438

Protanomaly

55.7163, 57.2374, 59.1503

Deuteranomaly

57.9090, 57.0503, 58.4117

Tritanomaly

58.3459, 57.1559, 63.8341

Monochromacy



Original Color

57.2363, 57.0328, 58.4438

Achromatopsia

54.8990, 57.7580, 62.8985

Achromatomaly

55.7257, 57.5412, 60.9928

CSS Examples

Text

The CSS property to change the color of the text to XYZ 57.2363, 57.0328, 58.4438 is called "color". The color property can be set on classes, ids or directly on the HTML element.

This example shows how text in the color rgb(216, 194, 193) looks like.

```
.text, #text, p{  
    color:rgb(216, 194, 193)  
}
```

If you want to add a text shadow in that color use the text-shadow property, you can generate a text shadow directly with our [CSS Text Shadow Generator](#).

Here you see how black text with a 4 pixel rgb(216, 194, 193) colored shadow looks like.

```
.shadow{ text-shadow: 4px 4px 2px rgb(216, 194, 193) }
```

Border

The CSS property to change the border of an element to XYZ 57.2363, 57.0328, 58.4438 is called "border". The border property can be set on classes, ids or directly on the HTML element.

This example shows the color as border, it can be applied via the CSS property "border" or "border-color".

```
.border, #border, table{ border:4px solid rgb(216, 194, 193) }
```


If only the border color should be changed use the property `border-color`.

```
.border{ border-color:rgb(216, 194, 193) }
```

If you want to add a box shadow in that color use:

Here you see how a box with a 4 pixel `rgb(216, 194, 193)` colored shadow looks like.

```
.boxshadow{ -moz-box-shadow:4px 4px 4px  
4px rgb(216, 194, 193); -webkit-box-  
shadow:4px 4px 4px 4px rgb(216, 194, 193);  
box-shadow:4px 4px 4px 4px rgb(216, 194,  
193) }
```

Background

The CSS property to change the background color of an element to XYZ 57.2363, 57.0328, 58.4438 is called "background". The background property can be set on classes, ids or directly on the HTML element.

```
.background, #background, body{  
background: rgb(216, 194, 193) }
```

If only the background color should be changed can be used:

```
.background{ background-color: rgb(216,  
194, 193) }
```

This example shows the color as background, it is applied via the CSS property "background".

To optimize and compress your CSS code, you can use our [online CSS compressor and optimizer](#) based on csstidy. If you want to create a linear or radial gradient as background or border, check our [CSS Gradient Generator](#).

Hey! You found this booklet interesting? Support Converting Colors with the new Membership Option!

The pro membership hides all ads, plus gives you double the colors in the color bucket, and more awesome pro features!

[Learn more, Memberships starting at \\$2.50/m!](#)

**Follow me
on Twitter!**

@ConvertingColor