

Converting Colors

XYZ(57.2010, 57.4151, 61.9154)

Have a look what the booklet for
XYZ(57.2010, 57.4151, 61.9154)
contains.

XYZ(57.2645, 57.2999, 62.0746)	3
<i>Conversions</i>	4
<i>Details</i>	6
<i>Harmonies</i>	12
<i>Previews</i>	24
<i>Color Blindness Simulation</i>	28
<i>CSS Examples</i>	31

Color

**XYZ(57.2645, 57.2999,
62.0746)**

Conversions

Conversions Part 1

Format	Color
Hex	D5C3C7
RGB	213, 195, 199
RGB Percent	84%, 76%, 78%
CMY	0.1647, 0.2353, 0.2196
CMYK	0.00, 0.08, 0.07, 0.16
HSL	347°, 18%, 80%
HSV	347°, 8%, 84%
XYZ	57.2645, 57.2999, 62.0746
YIQ	200.8380, 9.4440, 5.0600

Conversions

Conversions Part 2

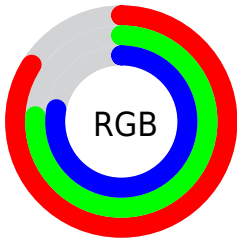
Format	Color
R _Y B	213, 195, 199
Decimal	14009287
CIE Lab	80.35, 7.00, 0.28
CIE LCh	80, 7.011, 2.291
Yxy	57.2999, 0.3242, 0.3244
Android (android.graphics.Color)	4292199367 (0xFFD5C3C7)
YUV	200.8380, -0.9061, 10.6661
Hunter-Lab	75.6967, 2.5659, 4.3673

Details

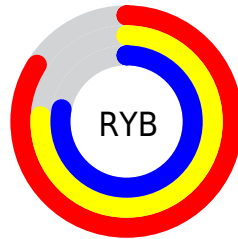
The XYZ color **57.2645, 57.2999, 62.0746** is a light color, and the websafe version is hex **CCCCCC**. A complement of this color would be **57.8108, 63.7956, 69.5917**, and the grayscale version is **55.4197, 58.3059, 63.4951**.

A 20% lighter version of the original color is **94.1004, 98.1008, 108.5835**, and **28.7363, 28.3632, 30.7481** is the 20% darker color. If you saturate the color by 10%, you get **51.0082, 47.6998, 51.0084**, and if you desaturate by 10%, it is **64.4144, 68.3503, 74.4737**.

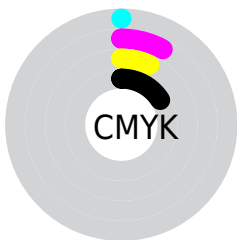
Distribution



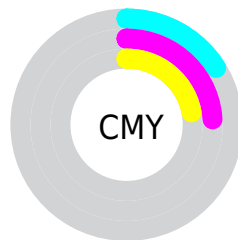
- Red (84%)
- Green (76%)
- Blue (78%)



- Red (84%)
- Yellow (76%)
- Blue (78%)



- Cyan (0%)
- Magenta (8%)
- Yellow (7%)
- Black (16%)



- Cyan (16%)
- Magenta (24%)
- Yellow (22%)

Brightness & Saturation Gradients

These gradients show how the XYZ color 57.2645, 57.2999, 62.0746 changes by changing the brightness by 10 percent. The first figure shows a shift by +10% for each color and the second figure -10%.

Similar to the brightness gradients but the following saturation gradients show a change of the XYZ color 57.2645, 57.2999, 62.0746 by changing the saturation by 10% instead.

■ 57.2645, 57.2999,
62.0746

■ 57.2645, 57.2999,
62.0746

404.4379,
414.5721, 450.2183

■ 41.4586, 41.2461,
44.6568

■ 99.9802, 100.9026,
109.4060

■ 28.8669, 28.5114,
30.8462

127.6206,
129.2204, 140.1566

■ 19.1239, 18.7115,
20.2243

159.9367,
162.3948, 176.1887

■ 11.8644, 11.4620,
12.3725

197.2936,
200.8104, 217.9206

■ 6.7229, 6.3785,
6.8723

240.0569,
244.8515, 265.7710

■ 3.3342, 3.0766,
3.3051

288.5918,

■ 1.3329, 1.1718,

294.9026, 320.1584

1.2525

343.2636,
351.3480, 381.5013

■ 0.2076, 0.0385,
0.0224

■ 0.0000, 0.0000,
0.0000

■ 57.2645, 57.2999,
62.0746

■ 57.2645, 57.2999,
62.0746

■ 51.0082, 47.6998,
51.0084

■ 64.4144, 68.3503,
74.4737

■ 45.6051, 39.4825,
41.2267

■ 72.4863, 80.9001,
88.2445

■ 41.0193, 32.5863,
32.6833

■ 80.2549, 92.4879,
103.0094

■ 37.2101, 26.9418,
25.3282

■ 81.2509, 92.8863,
108.2542

■ 34.1333, 22.4733,
19.1075

■ 31.7402, 19.0969,
13.9634

■ 29.9759, 16.7175,
9.8324

■ 28.7765, 15.2233,
6.6441

■ 28.0497, 14.4472,
4.3130

Harmonies

Analogous

The Analogous color harmony consists of three colors that are next to each other on the color wheel.



56.9403, 57.2999, 66.1353



57.2645, 57.2999, 62.0746



56.8268, 57.2999, 58.2644

Triad

The Triadic color harmony groups three colors that are evenly spaced from another and form a triangle on the color wheel.



57.2645, 57.2999, 62.0746



53.0016, 57.2999, 55.9478



53.1894, 57.2999, 69.6476

Complementary

The Complementary color scheme is a pair of colors which are on the opposite of each other on the color wheel.



57.2645, 57.2999, 62.0746



57.8108, 63.7956, 69.5917

Split Complementary

Split-complementary colors differ from the complementary color scheme. The scheme consists of three colors, the original color and two neighbors of the complement color.



52.1634, 57.2999, 66.7055



57.2645, 57.2999, 62.0746



52.0563, 57.2999, 58.7886

Square

The Square scheme is like the rectangle color scheme, but the four colors are evenly spaced on the color wheel.



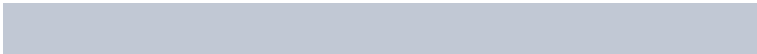
57.2645, 57.2999, 62.0746



54.3516, 57.2999, 54.8253



51.7521, 57.2999, 62.7062



54.5722, 57.2999, 70.6201

Rectangle

The Rectangle color scheme consists of four colors that form a rectangle on the color wheel.



57.2645, 57.2999, 62.0746



56.1663, 57.2999, 56.3470



51.7521, 57.2999, 62.7062



52.7922, 57.2999, 68.8500

Sweetspot

The Sweet Spot groups the original color and five complimentary colors.



57.2661, 57.3024, 62.0758



91.7144, 94.8384, 103.1342



57.7652, 57.3631, 70.9792



19.4444, 20.0115, 21.7519



0.0000, 0.0000, 0.0000



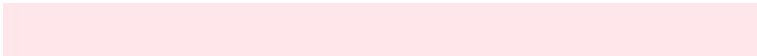
20.3446, 21.4041, 23.3091

Same Dimension

The Same Dimension uses a secret algorithm to generate beautiful new colors.



57.2661, 57.3024, 62.0758



84.4167, 83.5833, 90.4043



57.9007, 59.3045, 60.0280



12.5350, 12.4655, 13.4918



17.1108, 8.7806, 2.6215



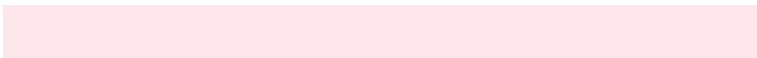
1.0637, 0.5423, 0.3250

Inverse Universe

The Inverse Universe completely reimagines the original color for something new.



57.2661, 57.3024, 62.0758



84.4167, 83.5833, 90.4043



57.1226, 61.6174, 71.8342



12.5350, 12.4655, 13.4918



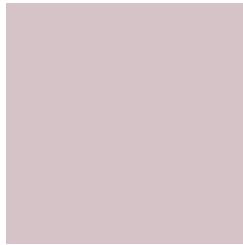
17.1108, 8.7806, 2.6215



1.0637, 0.5423, 0.3250

Previews

White Background



This preview shows how the XYZ color 57.2645, 57.2999, 62.0746 looks on a white background.

Color Contrast Check

Large Text (above 18pt) WCAG AA × Fail

Any Text WCAG AA × Fail

Large Text (above 18pt) WCAG AAA × Fail

Any Text WCAG AAA × Fail

Black Background



This preview shows how the XYZ color 57.2645, 57.2999, 62.0746 looks on a black background.

Color Contrast Check

Large Text (above 18pt) WCAG AA ✓ Pass

Any Text WCAG AA ✓ Pass

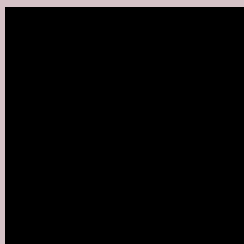
Large Text (above 18pt) WCAG AAA ✓ Pass

Any Text WCAG AAA ✓ Pass

If you want to check with other color combinations, try the [Color Contrast Checker](#).

XYZ 57.2645, 57.2999, 62.0746

Background



This preview shows how black text looks on a background with the XYZ color 57.2645, 57.2999, 62.0746.



This preview shows how white text looks on a background with the XYZ color 57.2645, 57.2999,

Color Blindness Simulation

Color vision deficiency is a very complex topic, and I could not describe the different causes any better than Wikipedia does, so if you want to learn more, you should check out their [article about color blindness](#).

Dichromacy



Original Color

57.2645, 57.2999, 62.0746

Protanopia

55.0938, 57.1618, 63.3879

Deuteranopia

58.2922, 57.1689, 61.9952



Tritanopia

58.3101, 57.0395, 68.2581

Trichromacy



Original Color

57.2645, 57.2999, 62.0746

Protanomaly

55.8452, 57.2244, 62.7456

Deuteranomaly

57.9195, 57.3060, 62.0413

Tritanomaly

58.0428, 57.2875, 65.7560

Monochromacy



Original Color

57.2645, 57.2999, 62.0746

Achromatopsia

55.5167, 58.4078, 63.6061

Achromatomaly

56.0256, 57.9961, 62.8851

CSS Examples

Text

The CSS property to change the color of the text to XYZ 57.2645, 57.2999, 62.0746 is called "color". The color property can be set on classes, ids or directly on the HTML element.

This example shows how text in the color rgb(213, 195, 199) looks like.

```
.text, #text, p{  
    color:rgb(213, 195, 199)  
}
```

If you want to add a text shadow in that color use the text-shadow property, you can generate a text shadow directly with our [CSS Text Shadow Generator](#).

Here you see how black text with a 4 pixel rgb(213, 195, 199) colored shadow looks like.

```
.shadow{ text-shadow: 4px 4px 2px rgb(213, 195, 199) }
```

Border

The CSS property to change the border of an element to XYZ 57.2645, 57.2999, 62.0746 is called "border". The border property can be set on classes, ids or directly on the HTML element.

This example shows the color as border, it can be applied via the CSS property "border" or "border-color".

```
.border, #border, table{ border:4px solid rgb(213, 195, 199) }
```


If only the border color should be changed use the property `border-color`.

```
.border{ border-color:rgb(213, 195, 199) }
```

If you want to add a box shadow in that color use:

Here you see how a box with a 4 pixel `rgb(213, 195, 199)` colored shadow looks like.

```
.boxshadow{ -moz-box-shadow:4px 4px 4px  
4px rgb(213, 195, 199); -webkit-box-  
shadow:4px 4px 4px 4px rgb(213, 195, 199);  
box-shadow:4px 4px 4px 4px rgb(213, 195,  
199) }
```

Background

The CSS property to change the background color of an element to XYZ 57.2645, 57.2999, 62.0746 is called "background". The background property can be set on classes, ids or directly on the HTML element.

```
.background, #background, body{  
background: rgb(213, 195, 199) }
```

If only the background color should be changed can be used:

```
.background{ background-color: rgb(213,  
195, 199) }
```

This example shows the color as background, it is applied via the CSS property "background".

To optimize and compress your CSS code, you can use our [online CSS compressor and optimizer](#) based on csstidy. If you want to create a linear or radial gradient as background or border, check our [CSS Gradient Generator](#).

Hey! You found this booklet interesting? Support Converting Colors with the new Membership Option!

The pro membership hides all ads, plus gives you double the colors in the color bucket, and more awesome pro features!

[Learn more, Memberships starting at \\$2.50/m!](#)

**Follow me
on Twitter!**

@ConvertingColor