

Converting Colors

XYZ(57.2322, 57.5745, 62.2587)

Have a look what the booklet for
XYZ(57.2322, 57.5745, 62.2587)
contains.

XYZ(57.2001, 57.6004, 62.1361)	3
<i>Conversions</i>	4
<i>Details</i>	6
<i>Harmonies</i>	12
<i>Previews</i>	24
<i>Color Blindness Simulation</i>	28
<i>CSS Examples</i>	31

Color

**XYZ(57.2001, 57.6004,
62.1361)**

Conversions

Conversions Part 1

Format	Color
Hex	D4C4C7
RGB	212, 196, 199
RGB Percent	83%, 77%, 78%
CMY	0.1686, 0.2314, 0.2196
CMYK	0.00, 0.08, 0.06, 0.17
HSL	349°, 16%, 80%
HSV	349°, 8%, 83%
XYZ	57.2001, 57.6004, 62.1361
YIQ	201.1260, 8.5730, 4.3250

Conversions

Conversions Part 2

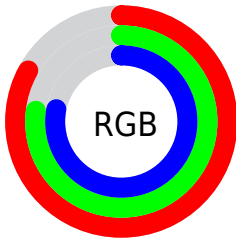
Format	Color
R _Y B	212, 196, 199
Decimal	13944007
CIE Lab	80.52, 6.12, 0.52
CIE LCh	81, 6.144, 4.812
Yxy	57.6004, 0.3233, 0.3255
Android (android.graphics.Color)	4292134087 (0xFFD4C4C7)
YUV	201.1260, -1.0481, 9.5365
Hunter-Lab	75.8949, 1.7148, 4.5850

Details

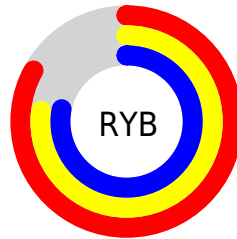
The XYZ color **57.2001, 57.6004, 62.1361** is a light color, and the websafe version is hex **CCCCCC**. A complement of this color would be **57.8192, 63.4276, 69.5200**, and the grayscale version is **55.5994, 58.4949, 63.7009**.

A 20% lighter version of the original color is **94.4153, 98.7306, 108.6884**, and **28.6885, 28.5584, 30.7883** is the 20% darker color. If you saturate the color by 10%, you get **50.8637, 47.9493, 50.7072**, and if you desaturate by 10%, it is **64.4419, 68.6985, 74.9856**.

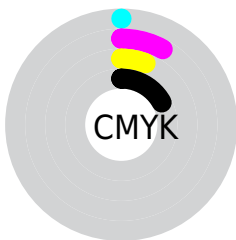
Distribution



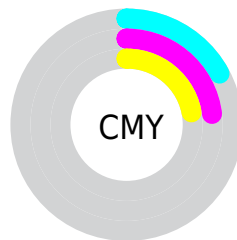
- Red (83%)
- Green (77%)
- Blue (78%)



- Red (83%)
- Yellow (77%)
- Blue (78%)



- Cyan (0%)
- Magenta (8%)
- Yellow (6%)
- Black (17%)



- Cyan (17%)
- Magenta (23%)
- Yellow (22%)

Brightness & Saturation Gradients

These gradients show how the XYZ color 57.2001, 57.6004, 62.1361 changes by changing the brightness by 10 percent. The first figure shows a shift by +10% for each color and the second figure -10%.

Similar to the brightness gradients but the following saturation gradients show a change of the XYZ color 57.2001, 57.6004, 62.1361 by changing the saturation by 10% instead.

■ 57.2001, 57.6004,
62.1361

■ 57.2001, 57.6004,
62.1361

404.2008,
415.6953, 450.4487

■ 41.4067, 41.4875,
44.7062

99.8868, 101.3407,
109.4957

■ 28.8261, 28.7002,
30.8848

127.5107,
129.7369, 140.2625

■ 19.0929, 18.8541,
20.2534

159.8089,
162.9963, 176.3120

■ 11.8418, 11.5649,
12.3935

197.1467,
201.5033, 218.0627

■ 6.7075, 6.4482,
6.8865

239.8894,
245.6423, 265.9332

■ 3.3245, 3.1195,
3.3138

288.4024,

■ 1.3276, 1.1944,

295.7977, 320.3420

1.2570

343.0511,
352.3539, 381.7076

■ 0.2038, 0.0571,
0.0262

■ 0.0000, 0.0000,
0.0000

■ 57.2001, 57.6004,
62.1361

■ 57.2001, 57.6004,
62.1361

■ 50.8637, 47.9493,
50.7072

■ 64.4419, 68.6985,
74.9856

■ 45.3922, 39.6782,
40.6462

■ 72.6180, 81.2920,
89.2987

■ 40.7492, 32.7262,
31.9026

■ 80.2751, 92.4626,
104.6252

■ 36.8935, 27.0248,
24.4212

■ 80.9617, 92.7372,
108.2407

■ 33.7808, 22.4993,
18.1431

■ 31.3621, 19.0671,
13.0042

■ 29.5821, 16.6347,
8.9348

■ 28.3770, 15.0928,
5.8566

■ 27.6617, 14.2916,
3.6778

Harmonies

Analogous

The Analogous color harmony consists of three colors that are next to each other on the color wheel.



56.9718, 57.6004, 65.7200



57.2001, 57.6004, 62.1361



56.7631, 57.6004, 58.8344

Triad

The Triadic color harmony groups three colors that are evenly spaced from another and form a triangle on the color wheel.



57.2001, 57.6004, 62.1361



53.3744, 57.6004, 57.1850



53.7217, 57.6004, 69.2152

Complementary

The Complementary color scheme is a pair of colors which are on the opposite of each other on the color wheel.



57.2001, 57.6004, 62.1361



57.8192, 63.4276, 69.5200

Split Complementary

Split-complementary colors differ from the complementary color scheme. The scheme consists of three colors, the original color and two neighbors of the complement color.



52.7801, 57.6004, 66.7668



57.2001, 57.6004, 62.1361



52.5818, 57.6004, 59.8070

Square

The Square scheme is like the rectangle color scheme, but the four colors are evenly spaced on the color wheel.



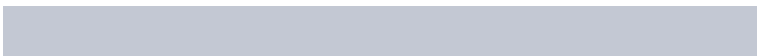
57.2001, 57.6004, 62.1361



54.5442, 57.6004, 56.0467



52.3659, 57.6004, 63.3016



54.9512, 57.6004, 69.8967

Rectangle

The Rectangle color scheme consists of four colors that form a rectangle on the color wheel.



57.2001, 57.6004, 62.1361



56.1571, 57.6004, 57.2096



52.3659, 57.6004, 63.3016



53.3616, 57.6004, 68.5671

Sweetspot

The Sweet Spot groups the original color and five complimentary colors.



57.2017, 57.6029, 62.1373



92.7843, 96.5250, 104.8882



57.8633, 57.7621, 70.3875



19.8834, 20.6967, 22.4925



0.0000, 0.0000, 0.0000



20.3446, 21.4041, 23.3091

Same Dimension

The Same Dimension uses a secret algorithm to generate beautiful new colors.



57.2017, 57.6029, 62.1373



85.3018, 85.0778, 91.5488



57.9570, 59.6648, 60.6893



12.5173, 12.4584, 13.3986



17.0227, 8.7454, 2.1576



1.0555, 0.5390, 0.2816

Inverse Universe

The Inverse Universe completely reimagines the original color for something new.



57.2017, 57.6029, 62.1373



85.3018, 85.0778, 91.5488



57.0119, 61.2137, 71.0987



12.5173, 12.4584, 13.3986



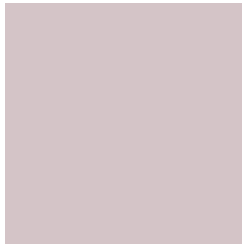
17.0227, 8.7454, 2.1576



1.0555, 0.5390, 0.2816

Previews

White Background



This preview shows how the XYZ color 57.2001, 57.6004, 62.1361 looks on a white background.

Color Contrast Check

Large Text (above 18pt) WCAG AA × Fail

Any Text WCAG AA × Fail

Large Text (above 18pt) WCAG AAA × Fail

Any Text WCAG AAA × Fail

Black Background



This preview shows how the XYZ color 57.2001, 57.6004, 62.1361 looks on a black background.

Color Contrast Check

Large Text (above 18pt) WCAG AA ✓ Pass

Any Text WCAG AA ✓ Pass

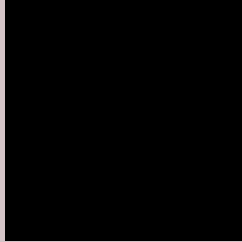
Large Text (above 18pt) WCAG AAA ✓ Pass

Any Text WCAG AAA ✓ Pass

If you want to check with other color combinations, try the [Color Contrast Checker](#).

XYZ 57.2001, 57.6004, 62.1361

Background



This preview shows how black text looks on a background with the XYZ color 57.2001, 57.6004, 62.1361.



This preview shows how white text looks on a background with the XYZ color 57.2001, 57.6004,

Color Blindness Simulation

Color vision deficiency is a very complex topic, and I could not describe the different causes any better than Wikipedia does, so if you want to learn more, you should check out their [article about color blindness](#).

Dichromacy



Original Color

57.2001, 57.6004, 62.1361

Protanopia

55.5946, 57.7604, 63.4771

Deuteranopia

58.7087, 57.3701, 62.6228



Tritanopia

58.6562, 57.5329, 68.9862

Trichromacy



Original Color

57.2001, 57.6004, 62.1361

Protanomaly

56.0730, 57.6801, 62.8216

Deuteranomaly

58.0360, 57.3526, 62.6549

Tritanomaly

58.0963, 57.6326, 66.4547

Monochromacy



Original Color

57.2001, 57.6004, 62.1361

Achromatopsia

55.5167, 58.4078, 63.6061

Achromatomaly

56.0256, 57.9961, 62.8851

CSS Examples

Text

The CSS property to change the color of the text to XYZ 57.2001, 57.6004, 62.1361 is called "color". The color property can be set on classes, ids or directly on the HTML element.

This example shows how text in the color rgb(212, 196, 199) looks like.

```
.text, #text, p{  
    color:rgb(212, 196, 199)  
}
```

If you want to add a text shadow in that color use the text-shadow property, you can generate a text shadow directly with our [CSS Text Shadow Generator](#).

Here you see how black text with a 4 pixel rgb(212, 196, 199) colored shadow looks like.

```
.shadow{ text-shadow: 4px 4px 2px rgb(212, 196, 199) }
```

Border

The CSS property to change the border of an element to XYZ 57.2001, 57.6004, 62.1361 is called "border". The border property can be set on classes, ids or directly on the HTML element.

This example shows the color as border, it can be applied via the CSS property "border" or "border-color".

```
.border, #border, table{ border:4px solid rgb(212, 196, 199) }
```


If only the border color should be changed use the property `border-color`.

```
.border{ border-color:rgb(212, 196, 199) }
```

If you want to add a box shadow in that color use:

Here you see how a box with a 4 pixel `rgb(212, 196, 199)` colored shadow looks like.

```
.boxshadow{ -moz-box-shadow:4px 4px 4px  
4px rgb(212, 196, 199); -webkit-box-  
shadow:4px 4px 4px 4px rgb(212, 196, 199);  
box-shadow:4px 4px 4px 4px rgb(212, 196,  
199) }
```

Background

The CSS property to change the background color of an element to XYZ 57.2001, 57.6004, 62.1361 is called "background". The background property can be set on classes, ids or directly on the HTML element.

```
.background, #background, body{  
background: rgb(212, 196, 199) }
```

If only the background color should be changed can be used:

```
.background{ background-color: rgb(212,  
196, 199) }
```

This example shows the color as background, it is applied via the CSS property "background".

To optimize and compress your CSS code, you can use our [online CSS compressor and optimizer](#) based on csstidy. If you want to create a linear or radial gradient as background or border, check our [CSS Gradient Generator](#).

Hey! You found this booklet interesting? Support Converting Colors with the new Membership Option!

The pro membership hides all ads, plus gives you double the colors in the color bucket, and more awesome pro features!

[Learn more, Memberships starting at \\$2.50/m!](#)

**Follow me
on Twitter!**

@ConvertingColor