

Converting Colors

XYZ(57.2583, 58.0112, 58.3974)

Have a look what the booklet for
XYZ(57.2583, 58.0112, 58.3974)
contains.

XYZ(57.3234, 58.0789, 58.6412)	3
<i>Conversions</i>	4
<i>Details</i>	6
<i>Harmonies</i>	12
<i>Previews</i>	24
<i>Color Blindness Simulation</i>	28
<i>CSS Examples</i>	31

Color

**XYZ(57.3234, 58.0789,
58.6412)**

Conversions

Conversions Part 1

Format	Color
Hex	D6C5C1
RGB	214, 197, 193
RGB Percent	84%, 77%, 76%
CMY	0.1608, 0.2274, 0.2431
CMYK	0.00, 0.08, 0.10, 0.16
HSL	11°, 20%, 80%
HSV	11°, 10%, 84%
XYZ	57.3234, 58.0789, 58.6412
YIQ	201.6270, 11.4160, 2.3600

Conversions

Conversions Part 2

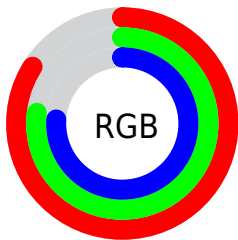
Format	Color
R _Y B	214, 198, 193
Decimal	14075329
CIE Lab	80.78, 5.28, 4.15
CIE LCh	81, 6.710, 38.156
Yxy	58.0789, 0.3294, 0.3337
Android (android.graphics.Color)	4292265409 (0xFFD6C5C1)
YUV	201.6270, -4.2531, 10.8511
Hunter-Lab	76.2095, 0.8978, 7.7246

Details

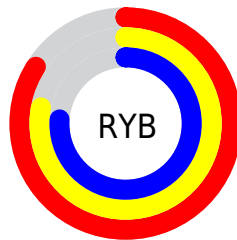
The XYZ color **57.3234, 58.0789, 58.6412** is a light color, and the websafe version is hex **CCCCCC**. A complement of this color would be **57.1762, 62.2844, 72.6274**, and the grayscale version is **55.9287, 58.8413, 64.0782**.

A 20% lighter version of the original color is **93.7807, 98.9832, 103.7854**, and **28.8542, 28.9093, 28.8702** is the 20% darker color. If you saturate the color by 10%, you get **51.3977, 49.7751, 45.7279**, and if you desaturate by 10%, it is **64.0497, 67.4297, 73.5270**.

Distribution



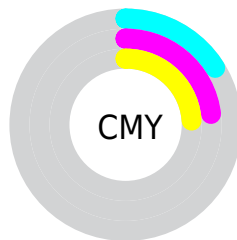
- Red (84%)
- Green (77%)
- Blue (76%)



- Red (84%)
- Yellow (78%)
- Blue (76%)



- Cyan (0%)
- Magenta (8%)
- Yellow (10%)
- Black (16%)



- Cyan (16%)
- Magenta (23%)
- Yellow (24%)

Brightness & Saturation Gradients

These gradients show how the XYZ color 57.3234, 58.0789, 58.6412 changes by changing the brightness by 10 percent. The first figure shows a shift by +10% for each color and the second figure -10%.

Similar to the brightness gradients but the following saturation gradients show a change of the XYZ color 57.3234, 58.0789, 58.6412 by changing the saturation by 10% instead.

■ 57.3234, 58.0789,
58.6412

■ 57.3234, 58.0789,
58.6412

404.6546,
417.4799, 437.2358

■ 41.5061, 41.8721,
41.9062

■ 100.0656,
102.0377, 104.3800

■ 28.9042, 29.0011,
28.7029

127.7211,
130.5586, 134.2209

■ 19.1523, 19.0817,
18.6125

160.0535,
163.9528, 169.2676

■ 11.8850, 11.7293,
11.2167

197.4280,
202.6050, 209.9385

■ 6.7371, 6.5596,
6.0968

240.2100,
246.8993, 256.6522

■ 3.3431, 3.1883,
2.8343

288.7649,

■ 1.3377, 1.2308,

297.2203, 309.8273

1.0106

343.4580,
353.9524, 369.8823

■ 0.2112, 0.0866,
0.0000

■ 0.0000, 0.0000,
0.0000

■ 57.3234, 58.0789,
58.6412

■ 57.3234, 58.0789,
58.6412

■ 51.3977, 49.7751,
45.7279

■ 64.0497, 67.4297,
73.5270

■ 46.2378, 42.4744,
34.7006

■ 71.6001, 77.8544,
90.4595

■ 41.8134, 36.1407,
25.4717

■ 79.6466, 89.2459,
107.6361

■ 38.0902, 30.7331,
17.9454

■ 81.5418, 93.0362,
108.2678

■ 35.0313, 26.2078,
12.0166

■ 32.5963, 22.5171,
7.5689

■ 30.7399, 19.6088,
4.4696

■ 29.4103, 17.4247,
2.5622

■ 28.5313, 15.8917,
1.5752

Harmonies

Analogous

The Analogous color harmony consists of three colors that are next to each other on the color wheel.



57.8812, 58.0789, 62.1620



57.3234, 58.0789, 58.6412



56.1993, 58.0789, 56.4182

Triad

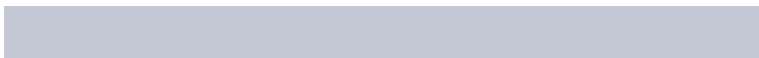
The Triadic color harmony groups three colors that are evenly spaced from another and form a triangle on the color wheel.



57.3234, 58.0789, 58.6412



52.7666, 58.0789, 60.4418



55.5810, 58.0789, 71.0941

Complementary

The Complementary color scheme is a pair of colors which are on the opposite of each other on the color wheel.



57.3234, 58.0789, 58.6412



57.1762, 62.2844, 72.6274

Split Complementary

Split-complementary colors differ from the complementary color scheme. The scheme consists of three colors, the original color and two neighbors of the complement color.



54.2171, 58.0789, 70.5865



57.3234, 58.0789, 58.6412



52.6073, 58.0789, 64.3265

Square

The Square scheme is like the rectangle color scheme, but the four colors are evenly spaced on the color wheel.



57.3234, 58.0789, 58.6412



53.5729, 58.0789, 57.4271



53.1341, 58.0789, 68.0691



56.8643, 58.0789, 69.4283

Rectangle

The Rectangle color scheme consists of four colors that form a rectangle on the color wheel.



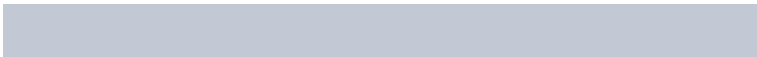
57.3234, 58.0789, 58.6412



55.2880, 58.0789, 55.9157



53.1341, 58.0789, 68.0691



55.1166, 58.0789, 71.1732

Sweetspot

The Sweet Spot groups the original color and five complimentary colors.



57.3250, 58.0815, 58.6424



91.8991, 95.6301, 101.8940



58.4537, 57.0975, 69.0114



19.4940, 20.2241, 21.4188



0.0000, 0.0000, 0.0000



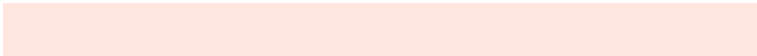
20.3446, 21.4041, 23.3091

Same Dimension

The Same Dimension uses a secret algorithm to generate beautiful new colors.



57.3250, 58.0815, 58.6424



83.1109, 83.3876, 82.5208



59.7555, 62.9425, 59.4526



12.6130, 12.8002, 12.9666



17.2940, 9.7053, 0.9618



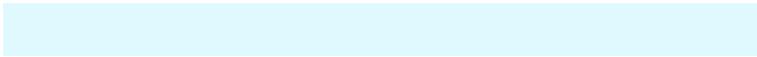
1.1007, 0.7006, 0.0772

Inverse Universe

The Inverse Universe completely reimagines the original color for something new.



57.1762, 62.2844, 72.6274



82.8415, 90.9852, 107.8034



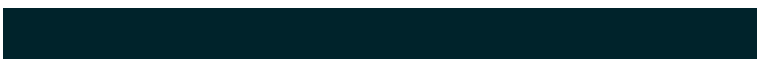
54.7040, 57.3399, 71.8033



12.5816, 13.6866, 15.9162



16.4644, 21.1907, 41.6756



1.0460, 1.3841, 2.5313

Previews

White Background



This preview shows how the XYZ color 57.3234, 58.0789, 58.6412 looks on a white background.

Color Contrast Check

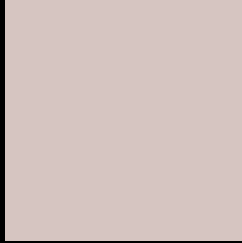
Large Text (above 18pt) WCAG AA × Fail

Any Text WCAG AA × Fail

Large Text (above 18pt) WCAG AAA × Fail

Any Text WCAG AAA × Fail

Black Background



This preview shows how the XYZ color 57.3234, 58.0789, 58.6412 looks on a black background.

Color Contrast Check

Large Text (above 18pt) WCAG AA ✓ Pass

Any Text WCAG AA ✓ Pass

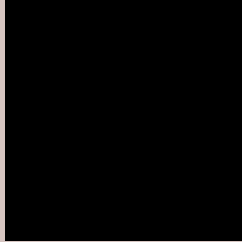
Large Text (above 18pt) WCAG AAA ✓ Pass

Any Text WCAG AAA ✓ Pass

If you want to check with other color combinations, try the [Color Contrast Checker](#).

XYZ 57.3234, 58.0789, 58.6412

Background



This preview shows how black text looks on a background with the XYZ color 57.3234, 58.0789, 58.6412.



This preview shows how white text looks on a background with the XYZ color 57.3234, 58.0789,

Color Blindness Simulation

Color vision deficiency is a very complex topic, and I could not describe the different causes any better than Wikipedia does, so if you want to learn more, you should check out their [article about color blindness](#).

Dichromacy



Original Color

57.3234, 58.0789, 58.6412

Protanopia

55.9582, 58.3705, 59.9471

Deuteranopia

59.4608, 58.1666, 59.1323



Tritanopia

59.2435, 57.8356, 69.0137

Trichromacy



Original Color

57.3234, 58.0789, 58.6412

Protanomaly

56.4555, 58.2972, 59.3159

Deuteranomaly

58.7679, 58.1409, 59.1638

Tritanomaly

58.4385, 57.8369, 65.2103

Monochromacy



Original Color

57.3234, 58.0789, 58.6412

Achromatopsia

56.1383, 59.0619, 64.3184

Achromatomaly

56.4167, 58.5539, 62.3614

CSS Examples

Text

The CSS property to change the color of the text to XYZ 57.3234, 58.0789, 58.6412 is called "color". The color property can be set on classes, ids or directly on the HTML element.

This example shows how text in the color rgb(214, 197, 193) looks like.

```
.text, #text, p{  
    color:rgb(214, 197, 193)  
}
```

If you want to add a text shadow in that color use the text-shadow property, you can generate a text shadow directly with our [CSS Text Shadow Generator](#).

Here you see how black text with a 4 pixel rgb(214, 197, 193) colored shadow looks like.

```
.shadow{ text-shadow: 4px 4px 2px rgb(214, 197, 193) }
```

Border

The CSS property to change the border of an element to XYZ 57.3234, 58.0789, 58.6412 is called "border". The border property can be set on classes, ids or directly on the HTML element.

This example shows the color as border, it can be applied via the CSS property "border" or "border-color".

```
.border, #border, table{ border:4px solid rgb(214, 197, 193) }
```


If only the border color should be changed use the property `border-color`.

```
.border{ border-color:rgb(214, 197, 193) }
```

If you want to add a box shadow in that color use:

Here you see how a box with a 4 pixel `rgb(214, 197, 193)` colored shadow looks like.

```
.boxshadow{ -moz-box-shadow:4px 4px 4px  
4px rgb(214, 197, 193); -webkit-box-  
shadow:4px 4px 4px 4px rgb(214, 197, 193);  
box-shadow:4px 4px 4px 4px rgb(214, 197,  
193) }
```

Background

The CSS property to change the background color of an element to XYZ 57.3234, 58.0789, 58.6412 is called "background". The background property can be set on classes, ids or directly on the HTML element.

```
.background, #background, body{  
background: rgb(214, 197, 193) }
```

If only the background color should be changed can be used:

```
.background{ background-color: rgb(214,  
197, 193) }
```

This example shows the color as background, it is applied via the CSS property "background".

To optimize and compress your CSS code, you can use our [online CSS compressor and optimizer](#) based on csstidy. If you want to create a linear or radial gradient as background or border, check our [CSS Gradient Generator](#).

Hey! You found this booklet interesting? Support Converting Colors with the new Membership Option!

The pro membership hides all ads, plus gives you double the colors in the color bucket, and more awesome pro features!

[Learn more, Memberships starting at \\$2.50/m!](#)

**Follow me
on Twitter!**

@ConvertingColor