

Converting Colors

XYZ(57.3814, 52.9829, 55.1759)

Have a look what the booklet for
XYZ(57.3814, 52.9829, 55.1759)
contains.

XYZ(57.3877, 53.0528, 55.3597)	3
<i>Conversions</i>	4
<i>Details</i>	6
<i>Harmonies</i>	12
<i>Previews</i>	24
<i>Color Blindness Simulation</i>	28
<i>CSS Examples</i>	31

Color

**XYZ(57.3877, 53.0528,
55.3597)**

Conversions

Conversions Part 1

Format	Color
Hex	E3B5BD
RGB	227, 181, 189
RGB Percent	89%, 71%, 74%
CMY	0.1098, 0.2902, 0.2588
CMYK	0.00, 0.20, 0.17, 0.11
HSL	350°, 45%, 80%
HSV	350°, 20%, 89%
XYZ	57.3877, 53.0528, 55.3597
YIQ	195.6660, 24.8480, 12.2400

Conversions

Conversions Part 2

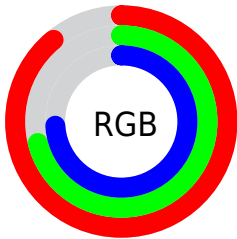
Format	Color
R _Y B	227, 181, 189
Decimal	14923197
CIE Lab	77.91, 17.83, 2.28
CIE LCh	78, 17.978, 7.285
Yxy	53.0528, 0.3461, 0.3200
Android (android.graphics.Color)	4293113277 (0xFFE3B5BD)
YUV	195.6660, -3.2863, 27.4799
Hunter-Lab	72.8374, 13.1727, 5.9231

Details

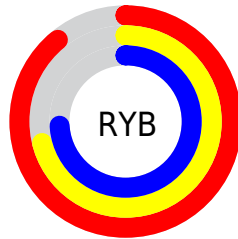
The XYZ color **57.3877, 53.0528, 55.3597** is a light color, and the websafe version is hex **FFCCCC**. A complement of this color would be **59.3134, 69.8776, 77.3827**, and the grayscale version is **52.2792, 55.0018, 59.8969**.

A 20% lighter version of the original color is **88.0056, 88.4209, 98.8148**, and **28.9577, 25.8738, 26.7605** is the 20% darker color. If you saturate the color by 10%, you get **51.2369, 43.8007, 43.9069**, and if you desaturate by 10%, it is **64.5568, 63.9190, 68.4518**.

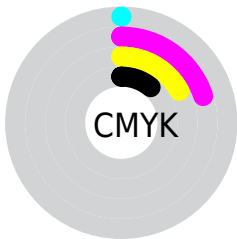
Distribution



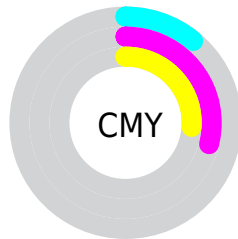
- Red (89%)
- Green (71%)
- Blue (74%)



- Red (89%)
- Yellow (71%)
- Blue (74%)



- Cyan (0%)
- Magenta (20%)
- Yellow (17%)
- Black (11%)



- Cyan (11%)
- Magenta (29%)
- Yellow (26%)

Brightness & Saturation Gradients

These gradients show how the XYZ color 57.3877, 53.0528, 55.3597 changes by changing the brightness by 10 percent. The first figure shows a shift by +10% for each color and the second figure -10%.

Similar to the brightness gradients but the following saturation gradients show a change of the XYZ color 57.3877, 53.0528, 55.3597 by changing the saturation by 10% instead.

■ 57.3877, 53.0528,
55.3597

■ 57.3877, 53.0528,
55.3597

404.8912,
398.4877, 424.5943

■ 41.5579, 37.8449,
39.2892

■ 100.1588, 94.6821,
99.5442

■ 28.9449, 25.8624,
26.6753

127.8308,
121.8722, 128.4953

■ 19.1832, 16.7207,
17.0992

160.1810,
153.8253, 162.5771

■ 11.9075, 10.0356,
10.1425

197.5746,
190.9256, 202.2080

■ 6.7525, 5.4225,
5.3867

240.3771,
233.5576, 247.8067

■ 3.3527, 2.4972,
2.4132

288.9538,

■ 1.3429, 0.8753,

282.1057, 299.7916

0.7936

343.6701,
336.9543, 358.5813

■ 0.2150, 0.0000,
0.0000

■ 0.0000, 0.0000,
0.0000

■ 57.3877, 53.0528,
55.3597

■ 57.3877, 53.0528,
55.3597

■ 51.2369, 43.8007,
43.9069

■ 64.5568, 63.9190,
68.4518

■ 46.0535, 36.0788,
34.0253

■ 72.7830, 76.4636,
83.2412

■ 41.7890, 29.8064,
25.6468

■ 82.1087, 90.7564,
99.7871

■ 38.3887, 24.8926,
18.6968

■ 85.4887, 95.0710,
108.4525

■ 35.7921, 21.2361,
13.0943

■ 33.9309, 18.7214,
8.7501

■ 32.7243, 17.2115,
5.5636

■ 32.0526, 16.4805,
3.4515

Harmonies

Analogous

The Analogous color harmony consists of three colors that are next to each other on the color wheel.



56.8802, 53.0528, 65.5191



57.3877, 53.0528, 55.3597



55.9620, 53.0528, 46.8753

Triad

The Triadic color harmony groups three colors that are evenly spaced from another and form a triangle on the color wheel.



57.3877, 53.0528, 55.3597



46.4635, 53.0528, 43.7683



47.8748, 53.0528, 77.3955

Complementary

The Complementary color scheme is a pair of colors which are on the opposite of each other on the color wheel.



57.3877, 53.0528, 55.3597



59.3134, 69.8776, 77.3827

Split Complementary

Split-complementary colors differ from the complementary color scheme. The scheme consists of three colors, the original color and two neighbors of the complement color.



45.2660, 53.0528, 70.2238



57.3877, 53.0528, 55.3597



44.4778, 53.0528, 50.6490

Square

The Square scheme is like the rectangle color scheme, but the four colors are evenly spaced on the color wheel.



57.3877, 53.0528, 55.3597



49.5779, 53.0528, 40.7035



44.0497, 53.0528, 60.2400



51.2819, 53.0528, 79.0321

Rectangle

The Rectangle color scheme consists of four colors that form a rectangle on the color wheel.



57.3877, 53.0528, 55.3597



54.1443, 53.0528, 43.0409



44.0497, 53.0528, 60.2400



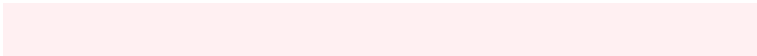
46.8802, 53.0528, 75.5151

Sweetspot

The Sweet Spot groups the original color and five complimentary colors.



57.3892, 53.0552, 55.3608



88.3930, 89.8361, 96.9692



59.4739, 53.5893, 79.8825



18.7713, 19.0024, 20.4881



0.0000, 0.0000, 0.0000



20.3446, 21.4041, 23.3091

Same Dimension

The Same Dimension uses a secret algorithm to generate beautiful new colors.



57.3892, 53.0552, 55.3608



71.4391, 64.1353, 66.0172



59.6630, 58.9539, 51.9538



14.4787, 14.4087, 15.4555



18.7228, 9.6233, 2.1691



1.4138, 0.7232, 0.3197

Inverse Universe

The Inverse Universe completely reimagines the original color for something new.



57.3892, 53.0552, 55.3608



71.4391, 64.1353, 66.0172



56.5751, 62.6755, 81.7891



14.4787, 14.4087, 15.4555



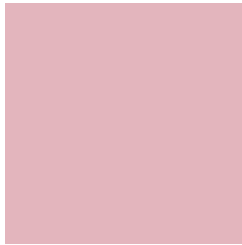
18.7228, 9.6233, 2.1691



1.4138, 0.7232, 0.3197

Previews

White Background



This preview shows how the XYZ color 57.3877, 53.0528, 55.3597 looks on a white background.

Color Contrast Check

Large Text (above 18pt) WCAG AA × Fail

Any Text WCAG AA × Fail

Large Text (above 18pt) WCAG AAA × Fail

Any Text WCAG AAA × Fail

Black Background



This preview shows how the XYZ color 57.3877, 53.0528, 55.3597 looks on a black background.

Color Contrast Check

Large Text (above 18pt) WCAG AA ✓ Pass

Any Text WCAG AA ✓ Pass

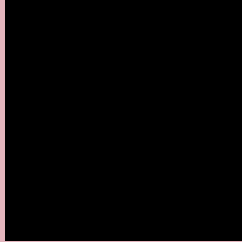
Large Text (above 18pt) WCAG AAA ✓ Pass

Any Text WCAG AAA ✓ Pass

If you want to check with other color combinations, try the [Color Contrast Checker](#).

XYZ 57.3877, 53.0528, 55.3597

Background



This preview shows how black text looks on a background with the XYZ color 57.3877, 53.0528, 55.3597.



This preview shows how white text looks on a background with the XYZ color 57.3877, 53.0528,

Color Blindness Simulation

Color vision deficiency is a very complex topic, and I could not describe the different causes any better than Wikipedia does, so if you want to learn more, you should check out their [article about color blindness](#).

Dichromacy



Original Color

57.3877, 53.0528, 55.3597

Protanopia

51.2056, 53.2415, 59.2076

Deuteranopia

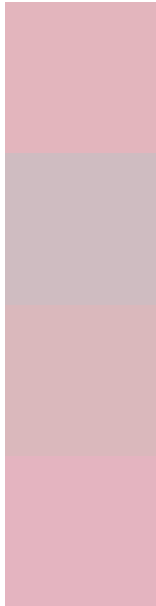
54.0766, 52.8948, 54.9365



Tritanopia

58.0538, 53.0315, 58.2153

Trichromacy



Original Color

57.3877, 53.0528, 55.3597

Protanomaly

53.3410, 53.0821, 57.8866

Deuteranomaly

55.1310, 52.8172, 54.8660

Tritanomaly

57.8306, 52.9423, 57.0400

Monochromacy



Original Color

57.3877, 53.0528, 55.3597

Achromatopsia

52.4687, 55.2011, 60.1140

Achromatomaly

53.9886, 54.3773, 58.1024

CSS Examples

Text

The CSS property to change the color of the text to XYZ 57.3877, 53.0528, 55.3597 is called "color". The color property can be set on classes, ids or directly on the HTML element.

This example shows how text in the color `rgb(227, 181, 189)` looks like.

```
.text, #text, p{  
    color:rgb(227, 181, 189)  
}
```

If you want to add a text shadow in that color use the text-shadow property, you can generate a text shadow directly with our [CSS Text Shadow Generator](#).

Here you see how black text with a 4 pixel rgb(227, 181, 189) colored shadow looks like.

```
.shadow{ text-shadow: 4px 4px 2px rgb(227, 181, 189) }
```

Border

The CSS property to change the border of an element to XYZ 57.3877, 53.0528, 55.3597 is called "border". The border property can be set on classes, ids or directly on the HTML element.

This example shows the color as border, it can be applied via the CSS property "border" or "border-color".

```
.border, #border, table{ border:4px solid rgb(227, 181, 189) }
```


If only the border color should be changed use the property `border-color`.

```
.border{ border-color:rgb(227, 181, 189) }
```

If you want to add a box shadow in that color use:

Here you see how a box with a 4 pixel `rgb(227, 181, 189)` colored shadow looks like.

```
.boxshadow{ -moz-box-shadow:4px 4px 4px  
4px rgb(227, 181, 189); -webkit-box-  
shadow:4px 4px 4px 4px rgb(227, 181, 189);  
box-shadow:4px 4px 4px 4px rgb(227, 181,  
189) }
```

Background

The CSS property to change the background color of an element to XYZ 57.3877, 53.0528, 55.3597 is called "background". The background property can be set on classes, ids or directly on the HTML element.

```
.background, #background, body{  
background: rgb(227, 181, 189) }
```

If only the background color should be changed can be used:

```
.background{ background-color: rgb(227,  
181, 189) }
```

This example shows the color as background, it is applied via the CSS property "background".

To optimize and compress your CSS code, you can use our [online CSS compressor and optimizer](#) based on csstidy. If you want to create a linear or radial gradient as background or border, check our [CSS Gradient Generator](#).

Hey! You found this booklet interesting? Support Converting Colors with the new Membership Option!

The pro membership hides all ads, plus gives you double the colors in the color bucket, and more awesome pro features!

[Learn more, Memberships starting at \\$2.50/m!](#)

**Follow me
on Twitter!**

@ConvertingColor