

# Converting Colors

XYZ(57.3953, 50.4679, 53.0502)

Have a look what the booklet for  
XYZ(57.3953, 50.4679, 53.0502)  
contains.

<b>XYZ(57.5471, 50.5426, 53.1770)</b> .....	3
<b><i>Conversions</i></b> .....	4
<b><i>Details</i></b> .....	6
<b><i>Harmonies</i></b> .....	12
<b><i>Previews</i></b> .....	24
<b><i>Color Blindness Simulation</i></b> .....	28
<b><i>CSS Examples</i></b> .....	31

# Color

**XYZ(57.5471, 50.5426,  
53.1770)**

# Conversions

## Conversions Part 1

<b>Format</b>	<b>Color</b>
Hex	EAACBA
RGB	234, 172, 186
RGB Percent	92%, 67%, 73%
CMY	0.0824, 0.3255, 0.2706
CMYK	0.00, 0.26, 0.21, 0.08
HSL	346°, 60%, 80%
HSV	346°, 26%, 92%
XYZ	57.5471, 50.5426, 53.1770
YIQ	192.1340, 32.4580, 17.4980

# Conversions

## Conversions Part 2

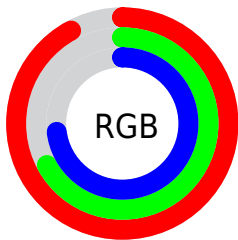
Format	Color
R <sub>Y</sub> B	234, 172, 186
Decimal	15379642
CIE Lab	76.40, 24.71, 1.81
CIE LCh	76, 24.777, 4.191
Yxy	50.5426, 0.3568, 0.3134
Android (android.graphics.Color)	4293569722 (0xFFEACBBA)
YUV	192.1340, -3.0241, 36.7165
Hunter-Lab	71.0933, 20.0751, 5.4171

# Details

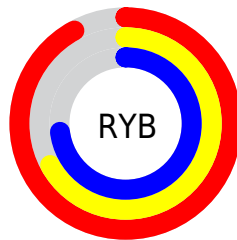
The XYZ color **57.5471, 50.5426, 53.1770** is a light color, and the websafe version is hex **CC9999**. A complement of this color would be **59.3564, 72.7848, 78.6341**, and the grayscale version is **50.1862, 52.7997, 57.4989**.

A 20% lighter version of the original color is **85.0104, 83.1576, 95.5749**, and **28.9619, 24.2342, 25.3415** is the 20% darker color. If you saturate the color by 10%, you get **51.6741, 41.6856, 42.3116**, and if you desaturate by 10%, it is **64.4513, 61.0701, 65.5921**.

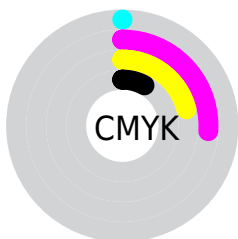
# Distribution



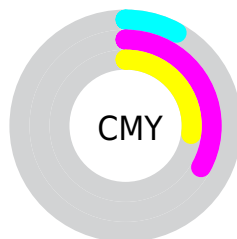
- Red (92%)
- Green (67%)
- Blue (73%)



- Red (92%)
- Yellow (67%)
- Blue (73%)



- Cyan (0%)
- Magenta (26%)
- Yellow (21%)
- Black (8%)



- Cyan (8%)
- Magenta (33%)
- Yellow (27%)

# Brightness & Saturation Gradients

These gradients show how the XYZ color 57.5471, 50.5426, 53.1770 changes by changing the brightness by 10 percent. The first figure shows a shift by +10% for each color and the second figure -10%.

Similar to the brightness gradients but the following saturation gradients show a change of the XYZ color 57.5471, 50.5426, 53.1770 by changing the saturation by 10% instead.



57.5471, 50.5426,  
53.1770

57.5471, 50.5426,  
53.1770

405.4773,  
388.7841, 416.0494

41.6865, 35.8447,  
37.5554

100.3898, 90.9783,  
96.3090

29.0459, 24.3143,  
25.3387

128.1026,  
117.4849, 124.6564

19.2600, 15.5669,  
16.1082

160.4969,  
148.6966, 158.0828

11.9634, 9.2182,  
9.4456

197.9379,  
184.9976, 197.0069

6.7908, 4.8838,  
4.9322

240.7912,  
226.7725, 241.8470

3.3768, 2.1792,  
2.1495

289.4219,

1.3560, 0.7086,

274.4056, 293.0217

0.6450

344.1955,  
328.2813, 350.9497

■ 0.2245, 0.0000,  
0.0000

■ 0.0000, 0.0000,  
0.0000

■ 57.5471, 50.5426,  
53.1770

■ 57.5471, 50.5426,  
53.1770

■ 51.6741, 41.6856,  
42.3116

■ 64.4513, 61.0701,  
65.5921

■ 46.7777, 34.4063,  
32.9312

■ 72.4292, 73.3408,  
79.6120

■ 42.8050, 28.6134,  
24.9709

■ 81.5260, 87.4317,  
95.2927

■ 39.6958, 24.2033,  
18.3596

■ 87.7419, 96.2325,  
108.5580

■ 37.3827, 21.0592,  
13.0199

■ 35.7879, 19.0444,  
8.8659

■ 34.8150, 17.9883,  
5.7992

■ 34.5705, 17.7480,  
4.9509

# Harmonies

## Analogous

The Analogous color harmony consists of three colors that are next to each other on the color wheel.



56.5710, 50.5426, 66.9853



57.5471, 50.5426, 53.1770



55.8434, 50.5426, 41.8274

# Triad

The Triadic color harmony groups three colors that are evenly spaced from another and form a triangle on the color wheel.



57.5471, 50.5426, 53.1770



43.1750, 50.5426, 36.4084



44.2406, 50.5426, 81.5354

# Complementary

The Complementary color scheme is a pair of colors which are on the opposite of each other on the color wheel.



57.5471, 50.5426, 53.1770



59.3564, 72.7848, 78.6341

# Split Complementary

Split-complementary colors differ from the complementary color scheme. The scheme consists of three colors, the original color and two neighbors of the complement color.



40.9982, 50.5426, 70.7593



57.5471, 50.5426, 53.1770



40.4115, 50.5426, 44.5932

# Square

The Square scheme is like the rectangle color scheme, but the four colors are evenly spaced on the color wheel.



57.5471, 50.5426, 53.1770



47.3870, 50.5426, 33.1909



39.6409, 50.5426, 56.9303



48.6974, 50.5426, 84.8179



# Rectangle

The Rectangle color scheme consists of four colors that form a rectangle on the color wheel.



57.5471, 50.5426, 53.1770



53.4781, 50.5426, 36.7250



39.6409, 50.5426, 56.9303



42.9822, 50.5426, 78.5923

# Sweetspot

The Sweet Spot groups the original color and five complimentary colors.



57.5485, 50.5449, 53.1780



86.4443, 86.6920, 93.9976



58.9796, 50.5909, 84.4988



18.1773, 18.0542, 19.5507



0.0000, 0.0000, 0.0000



20.3446, 21.4041, 23.3091



# Same Dimension

The Same Dimension uses a secret algorithm to generate beautiful new colors.



57.5485, 50.5449, 53.1780



65.7550, 55.0986, 56.9349



59.4771, 56.6679, 46.8358



15.2047, 15.1097, 16.3634



19.4658, 9.9890, 2.9883



1.5642, 0.7986, 0.4224



# Inverse Universe

The Inverse Universe completely reimagines the original color for something new.



57.5485, 50.5449, 53.1780



65.7550, 55.0986, 56.9349



56.7997, 64.5795, 87.3137



15.2047, 15.1097, 16.3634



19.4658, 9.9890, 2.9883



1.5642, 0.7986, 0.4224



# Previews

## White Background



This preview shows how the XYZ color 57.5471, 50.5426, 53.1770 looks on a white background.

## Color Contrast Check

Large Text (above 18pt) WCAG AA × Fail

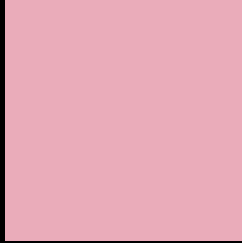
Any Text WCAG AA × Fail

Large Text (above 18pt) WCAG AAA × Fail

Any Text WCAG AAA × Fail



# Black Background



This preview shows how the XYZ color 57.5471, 50.5426, 53.1770 looks on a black background.

## Color Contrast Check

Large Text (above 18pt) WCAG AA ✓ Pass

Any Text WCAG AA ✓ Pass

Large Text (above 18pt) WCAG AAA ✓ Pass

Any Text WCAG AAA ✓ Pass

If you want to check with other color combinations, try the [Color Contrast Checker](#).

# XYZ 57.5471, 50.5426, 53.1770

## Background



This preview shows how black text looks on a background with the XYZ color 57.5471, 50.5426, 53.1770.



This preview shows how white text looks on a background with the XYZ color 57.5471, 50.5426,

53.1770.

# Color Blindness Simulation

Color vision deficiency is a very complex topic, and I could not describe the different causes any better than Wikipedia does, so if you want to learn more, you should check out their [article about color blindness](#).

## Dichromacy



### Original Color

57.5471, 50.5426, 53.1770

### Protanopia

49.0688, 50.8537, 58.8593

### Deuteranopia

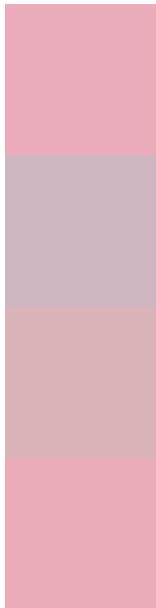
51.8797, 50.8830, 52.4344



## Tritanopia

57.4412, 50.5003, 52.6190

# Trichromacy



## Original Color

57.5471, 50.5426, 53.1770

## Protanomaly

51.6960, 50.3835, 56.8695

## Deuteranomaly

53.7905, 50.6484, 52.8400

## Tritanomaly

57.4412, 50.5003, 52.6190

# Monochromacy



## Original Color

57.5471, 50.5426, 53.1770

## Achromatopsia

50.1023, 52.7115, 57.4028

## Achromatomaly

52.3754, 51.6810, 55.9302

# CSS Examples

## Text

The CSS property to change the color of the text to XYZ 57.5471, 50.5426, 53.1770 is called "color". The color property can be set on classes, ids or directly on the HTML element.

This example shows how text in the color `rgb(234, 172, 186)` looks like.

```
.text, #text, p{  
    color:rgb(234, 172, 186)  
}
```

If you want to add a text shadow in that color use the text-shadow property, you can generate a text shadow directly with our [CSS Text Shadow Generator](#).

Here you see how black text with a 4 pixel rgb(234, 172, 186) colored shadow looks like.

```
.shadow{ text-shadow: 4px 4px 2px rgb(234, 172, 186) }
```

## Border

The CSS property to change the border of an element to XYZ 57.5471, 50.5426, 53.1770 is called "border". The border property can be set on classes, ids or directly on the HTML element.

This example shows the color as border, it can be applied via the CSS property "border" or "border-color".

```
.border, #border, table{ border:4px solid rgb(234, 172, 186) }
```



If only the border color should be changed use the property `border-color`.

```
.border{ border-color:rgb(234, 172, 186) }
```

If you want to add a box shadow in that color use:

Here you see how a box with a 4 pixel `rgb(234, 172, 186)` colored shadow looks like.

```
.boxshadow{ -moz-box-shadow:4px 4px 4px  
4px rgb(234, 172, 186); -webkit-box-  
shadow:4px 4px 4px 4px rgb(234, 172, 186);  
box-shadow:4px 4px 4px 4px rgb(234, 172,  
186) }
```

# Background

The CSS property to change the background color of an element to XYZ 57.5471, 50.5426, 53.1770 is called "background". The background property can be set on classes, ids or directly on the HTML element.

```
.background, #background, body{  
background: rgb(234, 172, 186) }
```

If only the background color should be changed can be used:

```
.background{ background-color: rgb(234,  
172, 186) }
```

This example shows the color as background, it is applied via the CSS property "background".

To optimize and compress your CSS code, you can use our [online CSS compressor and optimizer](#) based on csstidy. If you want to create a linear or radial gradient as background or border, check our [CSS Gradient Generator](#).

Hey! You found this booklet interesting? Support Converting Colors with the new Membership Option!

The pro membership hides all ads, plus gives you double the colors in the color bucket, and more awesome pro features!

**[Learn more, Memberships starting at \\$2.50/m!](#)**

**Follow me  
on Twitter!**

@ConvertingColor