

# Converting Colors

XYZ(57.4123, 56.5709, 61.8020)

Have a look what the booklet for  
XYZ(57.4123, 56.5709, 61.8020)  
contains.

<b>XYZ(57.4031, 56.7105, 61.9536)</b> .....	3
<b><i>Conversions</i></b> .....	4
<b><i>Details</i></b> .....	6
<b><i>Harmonies</i></b> .....	12
<b><i>Previews</i></b> .....	24
<b><i>Color Blindness Simulation</i></b> .....	28
<b><i>CSS Examples</i></b> .....	31

# Color

**XYZ(57.4031, 56.7105,  
61.9536)**

# Conversions

## Conversions Part 1

<b>Format</b>	<b>Color</b>
Hex	D7C1C7
RGB	215, 193, 199
RGB Percent	84%, 76%, 78%
CMY	0.1569, 0.2431, 0.2196
CMYK	0.00, 0.10, 0.07, 0.16
HSL	344°, 22%, 80%
HSV	344°, 10%, 84%
XYZ	57.4031, 56.7105, 61.9536
YIQ	200.2620, 11.1860, 6.5300

# Conversions

## Conversions Part 2

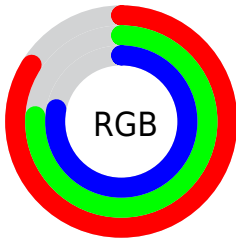
Format	Color
R <sub>Y</sub> B	215, 193, 199
Decimal	14139847
CIE Lab	80.02, 8.77, -0.18
CIE LCh	80, 8.776, 358.802
Yxy	56.7105, 0.3260, 0.3221
Android (android.graphics.Color)	4292329927 (0xFFD7C1C7)
YUV	200.2620, -0.6222, 12.9252
Hunter-Lab	75.3064, 4.2774, 3.9373

# Details

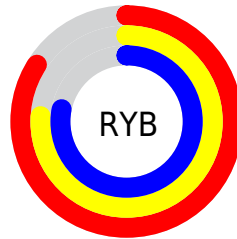
The XYZ color **57.4031, 56.7105, 61.9536** is a light color, and the websafe version is hex **CCCCCC**. A complement of this color would be **57.8035, 64.5433, 69.7362**, and the grayscale version is **55.0614, 57.9288, 63.0845**.

A 20% lighter version of the original color is **93.1657, 96.2314, 108.2719**, and **28.8407, 27.9832, 30.6693** is the 20% darker color. If you saturate the color by 10%, you get **51.2682, 47.1982, 51.4058**, and if you desaturate by 10%, it is **64.4188, 67.6843, 73.7171**.

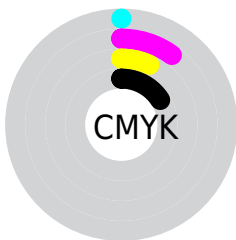
# Distribution



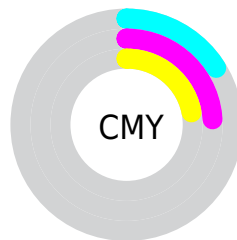
- Red (84%)
- Green (76%)
- Blue (78%)



- Red (84%)
- Yellow (76%)
- Blue (78%)



- Cyan (0%)
- Magenta (10%)
- Yellow (7%)
- Black (16%)




- Cyan (16%)
- Magenta (24%)
- Yellow (22%)


# Brightness & Saturation Gradients

These gradients show how the XYZ color 57.4031, 56.7105, 61.9536 changes by changing the brightness by 10 percent. The first figure shows a shift by +10% for each color and the second figure -10%.


Similar to the brightness gradients but the following saturation gradients show a change of the XYZ color 57.4031, 56.7105, 61.9536 by changing the saturation by 10% instead.





 57.4031, 56.7105,  
61.9536

 57.4031, 56.7105,  
61.9536


404.9479,  
412.3636, 449.7648

 41.5704, 40.7729,  
44.5597


 100.1811,  
100.0426, 109.2294

 28.9547, 28.1416,  
30.7703


127.8571,  
128.2059, 139.9484

 19.1906, 18.4325,  
20.1670


160.2115,  
161.2132, 175.9461

 11.9129, 11.2609,  
12.3312

197.6097,  
199.4489, 217.6411

 6.7562, 6.2426,  
6.8444

240.4171,  
243.2974, 265.4519

 3.3551, 2.9932,  
3.2880

288.9990,

 1.3442, 1.1282,

293.1431, 319.7971

1.2435

343.7208,  
349.3704, 381.0952

■ 0.2159, 0.0018,  
0.0148

■ 0.0000, 0.0000,  
0.0000

■ 57.4031, 56.7105,  
61.9536

■ 57.4031, 56.7105,  
61.9536

■ 51.2682, 47.1982,  
51.4058

■ 64.4188, 67.6843,  
73.7171

■ 45.9739, 39.0783,  
42.0306

■ 72.3438, 80.1701,  
86.7302

■ 41.4842, 32.2874,  
33.7876

■ 80.4067, 92.6160,  
100.7619

■ 37.7585, 26.7539,  
26.6328

■ 81.8347, 93.1872,  
108.2815

■ 34.7523, 22.3997,  
20.5189

■ 32.4167, 19.1379,  
15.3952

■ 30.6961, 16.8693,  
11.2062

■ 29.5252, 15.4766,  
7.8902

■ 28.8040, 14.7590,  
5.4156

# Harmonies

## Analogous

The Analogous color harmony consists of three colors that are next to each other on the color wheel.



56.8883, 56.7105, 66.9760



57.4031, 56.7105, 61.9536



56.9626, 56.7105, 57.1365

# Triad

The Triadic color harmony groups three colors that are evenly spaced from another and form a triangle on the color wheel.



57.4031, 56.7105, 61.9536



52.2664, 56.7105, 53.5361



52.1449, 56.7105, 70.5351

# Complementary

The Complementary color scheme is a pair of colors which are on the opposite of each other on the color wheel.



57.4031, 56.7105, 61.9536



57.8035, 64.5433, 69.7362

# Split Complementary

Split-complementary colors differ from the complementary color scheme. The scheme consists of three colors, the original color and two neighbors of the complement color.



50.9523, 56.7105, 66.6014



57.4031, 56.7105, 61.9536



51.0214, 56.7105, 56.7996

# Square

The Square scheme is like the rectangle color scheme, but the four colors are evenly spaced on the color wheel.



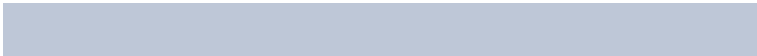
57.4031, 56.7105, 61.9536



53.9733, 56.7105, 52.4410



50.5455, 56.7105, 61.5430



53.8300, 56.7105, 72.0960



# Rectangle

The Rectangle color scheme consists of four colors that form a rectangle on the color wheel.



57.4031, 56.7105, 61.9536



56.1919, 56.7105, 54.6496



50.5455, 56.7105, 61.5430



51.6745, 56.7105, 69.4361

# Sweetspot

The Sweet Spot groups the original color and five complimentary colors.



57.4047, 56.7130, 61.9548



91.7748, 94.8626, 103.4523



57.5661, 56.5701, 72.1758



19.4606, 20.0180, 21.8375



0.0000, 0.0000, 0.0000



20.3446, 21.4041, 23.3091



# Same Dimension

The Same Dimension uses a secret algorithm to generate beautiful new colors.



57.4047, 56.7130, 61.9548



82.6744, 80.6550, 88.1081



57.7926, 58.5812, 58.7163



12.5609, 12.4759, 13.6282



17.2665, 8.8429, 3.4414



1.0762, 0.5473, 0.3909



# Inverse Universe

The Inverse Universe completely reimagines the original color for something new.



57.4047, 56.7130, 61.9548



82.6744, 80.6550, 88.1081



57.3642, 62.4539, 73.3221



12.5609, 12.4759, 13.6282



17.2665, 8.8429, 3.4414

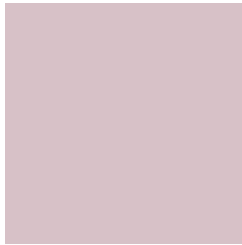


1.0762, 0.5473, 0.3909



# Previews

## White Background



This preview shows how the XYZ color 57.4031, 56.7105, 61.9536 looks on a white background.

## Color Contrast Check

Large Text (above 18pt) WCAG AA × Fail

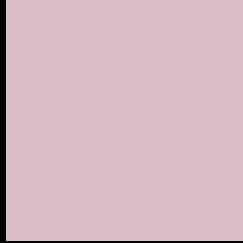
Any Text WCAG AA × Fail

Large Text (above 18pt) WCAG AAA × Fail

Any Text WCAG AAA × Fail



# Black Background



This preview shows how the XYZ color 57.4031, 56.7105, 61.9536 looks on a black background.

## Color Contrast Check

Large Text (above 18pt) WCAG AA ✓ Pass

Any Text WCAG AA ✓ Pass

Large Text (above 18pt) WCAG AAA ✓ Pass

Any Text WCAG AAA ✓ Pass

If you want to check with other color combinations, try the [Color Contrast Checker](#).

# XYZ 57.4031, 56.7105, 61.9536

## Background



This preview shows how black text looks on a background with the XYZ color 57.4031, 56.7105, 61.9536.



This preview shows how white text looks on a background with the XYZ color 57.4031, 56.7105,



# Color Blindness Simulation

Color vision deficiency is a very complex topic, and I could not describe the different causes any better than Wikipedia does, so if you want to learn more, you should check out their [article about color blindness](#).

## Dichromacy



### Original Color

57.4031, 56.7105, 61.9536

### Protanopia

54.7143, 56.6143, 63.9210

### Deuteranopia

57.7737, 56.5745, 61.9078



## Tritanopia

58.4310, 56.8032, 66.9160

# Trichromacy



## Original Color

57.4031, 56.7105, 61.9536

## Protanomaly

55.7361, 56.8187, 63.2878

## Deuteranomaly

57.4773, 56.4217, 61.8939

## Tritanomaly

58.0676, 56.6578, 65.0023

# Monochromacy



## Original Color

57.4031, 56.7105, 61.9536

## Achromatopsia

54.8990, 57.7580, 62.8985

## Achromatomaly

55.5684, 57.0818, 62.7327

# CSS Examples

## Text

The CSS property to change the color of the text to XYZ 57.4031, 56.7105, 61.9536 is called "color". The color property can be set on classes, ids or directly on the HTML element.

This example shows how text in the color rgb(215, 193, 199) looks like.

```
.text, #text, p{  
    color:rgb(215, 193, 199)  
}
```

If you want to add a text shadow in that color use the text-shadow property, you can generate a text shadow directly with our [CSS Text Shadow Generator](#).

Here you see how black text with a 4 pixel rgb(215, 193, 199) colored shadow looks like.

```
.shadow{ text-shadow: 4px 4px 2px rgb(215, 193, 199) }
```

## Border

The CSS property to change the border of an element to XYZ 57.4031, 56.7105, 61.9536 is called "border". The border property can be set on classes, ids or directly on the HTML element.

This example shows the color as border, it can be applied via the CSS property "border" or "border-color".

```
.border, #border, table{ border:4px solid rgb(215, 193, 199) }
```



If only the border color should be changed use the property `border-color`.

```
.border{ border-color:rgb(215, 193, 199) }
```

If you want to add a box shadow in that color use:

Here you see how a box with a 4 pixel `rgb(215, 193, 199)` colored shadow looks like.

```
.boxshadow{ -moz-box-shadow:4px 4px 4px  
4px rgb(215, 193, 199); -webkit-box-  
shadow:4px 4px 4px 4px rgb(215, 193, 199);  
box-shadow:4px 4px 4px 4px rgb(215, 193,  
199) }
```

# Background

The CSS property to change the background color of an element to XYZ 57.4031, 56.7105, 61.9536 is called "background". The background property can be set on classes, ids or directly on the HTML element.

```
.background, #background, body{  
background: rgb(215, 193, 199) }
```

If only the background color should be changed can be used:

```
.background{ background-color: rgb(215,  
193, 199) }
```

This example shows the color as background, it is applied via the CSS property "background".

To optimize and compress your CSS code, you can use our [online CSS compressor and optimizer](#) based on csstidy. If you want to create a linear or radial gradient as background or border, check our [CSS Gradient Generator](#).

Hey! You found this booklet interesting? Support Converting Colors with the new Membership Option!

The pro membership hides all ads, plus gives you double the colors in the color bucket, and more awesome pro features!

**[Learn more, Memberships starting at \\$2.50/m!](#)**

**Follow me  
on Twitter!**

@ConvertingColor