

Converting Colors

XYZ(57.4684, 55.3505, 60.3492)

Have a look what the booklet for
XYZ(57.4684, 55.3505, 60.3492)
contains.

XYZ(57.4891, 55.4865, 60.5033)	3
<i>Conversions</i>	4
<i>Details</i>	6
<i>Harmonies</i>	12
<i>Previews</i>	24
<i>Color Blindness Simulation</i>	28
<i>CSS Examples</i>	31

Color

**XYZ(57.4891, 55.4865,
60.5033)**

Conversions

Conversions Part 1

Format	Color
Hex	DBBDC5
RGB	219, 189, 197
RGB Percent	86%, 74%, 77%
CMY	0.1412, 0.2588, 0.2274
CMYK	0.00, 0.14, 0.10, 0.14
HSL	344°, 29%, 80%
HSV	344°, 14%, 86%
XYZ	57.4891, 55.4865, 60.5033
YIQ	198.8820, 15.3120, 8.8480

Conversions

Conversions Part 2

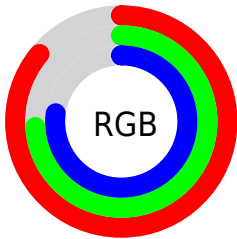
Format	Color
R _Y B	219, 189, 197
Decimal	14400965
CIE Lab	79.32, 11.98, -0.08
CIE LCh	79, 11.985, 359.619
Yxy	55.4865, 0.3314, 0.3198
Android (android.graphics.Color)	4292591045 (0xFFDBBDC5)
YUV	198.8820, -0.9278, 17.6435
Hunter-Lab	74.4893, 7.4060, 3.9847

Details

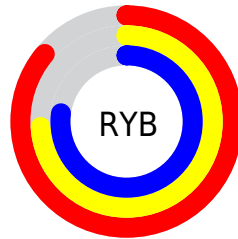
The XYZ color **57.4891, 55.4865, 60.5033** is a light color, and the websafe version is hex **FFCCCC**. A complement of this color would be **58.0779, 66.1865, 71.3455**, and the grayscale version is **54.2142, 57.0376, 62.1139**.

A 20% lighter version of the original color is **91.7818, 93.7206, 107.0184**, and **29.0719, 27.4840, 29.7593** is the 20% darker color. If you saturate the color by 10%, you get **51.3860, 46.0699, 49.8674**, and if you desaturate by 10%, it is **64.5028, 66.4091, 72.4116**.

Distribution



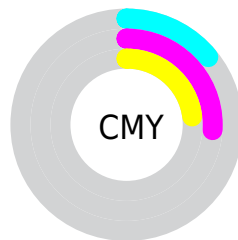
- Red (86%)
- Green (74%)
- Blue (77%)



- Red (86%)
- Yellow (74%)
- Blue (77%)



- Cyan (0%)
- Magenta (14%)
- Yellow (10%)
- Black (14%)





- Cyan (14%)
- Magenta (26%)
- Yellow (23%)

Brightness & Saturation Gradients


These gradients show how the XYZ color 57.4891, 55.4865, 60.5033 changes by changing the brightness by 10 percent. The first figure shows a shift by +10% for each color and the second figure -10%.

Similar to the brightness gradients but the following saturation gradients show a change of the XYZ color 57.4891, 55.4865, 60.5033 by changing the saturation by 10% instead.


 57.4891, 55.4865,
60.5033

 57.4891, 55.4865,
60.5033


405.2641,
407.7534, 444.3065

 41.6397, 39.7914,
43.3965


 100.3057, 98.2534,
107.1099

 29.0092, 27.3759,
29.8626


128.0037,
126.0939, 137.4468

 19.2321, 17.8557,
19.4832


160.3819,
158.7517, 173.0308

 11.9431, 10.8465,
11.8396

197.8058,
196.6112, 214.2805

 6.7769, 5.9637,
6.5133

240.6405,
240.0567, 261.6144

 3.3680, 2.8230,
3.0859

289.2516,

 1.3512, 1.0400,

289.4726, 315.4510

1.1386

344.0044,
345.2434, 376.2088

■ 0.2211, 0.0000,
0.0000

■ 0.0000, 0.0000,
0.0000

■ 57.4891, 55.4865,
60.5033

■ 57.4891, 55.4865,
60.5033

■ 51.3860, 46.0699,
49.8674

■ 64.5028, 66.4091,
72.4116

■ 46.1509, 38.0859,
40.4576

■ 72.4580, 78.8921,
85.6295

■ 41.7446, 31.4659,
32.2297

■ 81.3900, 92.9966,
100.1969

■ 38.1234, 26.1330,
25.1357

■ 83.0237, 93.8002,
108.3372

■ 35.2390, 22.0024,
19.1240

■ 33.0377, 18.9790,
14.1387

■ 31.4582, 16.9532,
10.1186

■ 30.4270, 15.7926,
6.9945

■ 29.9872, 15.3696,
5.4400

Harmonies

Analogous

The Analogous color harmony consists of three colors that are next to each other on the color wheel.



56.8206, 55.4865, 67.3494



57.4891, 55.4865, 60.5033



56.8528, 55.4865, 54.1157

Triad

The Triadic color harmony groups three colors that are evenly spaced from another and form a triangle on the color wheel.



57.4891, 55.4865, 60.5033



50.4901, 55.4865, 49.6383



50.4385, 55.4865, 72.5499

Complementary

The Complementary color scheme is a pair of colors which are on the opposite of each other on the color wheel.



57.4891, 55.4865, 60.5033



58.0779, 66.1865, 71.3455

Split Complementary

Split-complementary colors differ from the complementary color scheme. The scheme consists of three colors, the original color and two neighbors of the complement color.



48.8271, 55.4865, 67.1859



57.4891, 55.4865, 60.5033



48.8563, 55.4865, 53.9743

Square

The Square scheme is like the rectangle color scheme, but the four colors are evenly spaced on the color wheel.



57.4891, 55.4865, 60.5033



52.7689, 55.4865, 48.1389



48.2566, 55.4865, 60.3275



52.7076, 55.4865, 74.6194

Rectangle

The Rectangle color scheme consists of four colors that form a rectangle on the color wheel.



57.4891, 55.4865, 60.5033



55.7850, 55.4865, 50.8961



48.2566, 55.4865, 60.3275



49.8045, 55.4865, 71.0532

Sweetspot

The Sweet Spot groups the original color and five complimentary colors.



57.4907, 55.4890, 60.5045



90.7007, 93.1914, 101.6235



57.8496, 55.3612, 74.6554



19.2438, 19.6813, 21.4659



0.0000, 0.0000, 0.0000



20.3446, 21.4041, 23.3091

Same Dimension

The Same Dimension uses a secret algorithm to generate beautiful new colors.



57.4907, 55.4890, 60.5045



78.9382, 74.8948, 81.5843



58.1405, 58.2164, 56.3196



13.1979, 13.1082, 14.3032



17.8197, 9.1289, 3.4308



1.1900, 0.6056, 0.4096

Inverse Universe

The Inverse Universe completely reimagines the original color for something new.



57.4907, 55.4890, 60.5045



78.9382, 74.8948, 81.5843



57.3179, 63.0220, 76.1621



13.1979, 13.1082, 14.3032



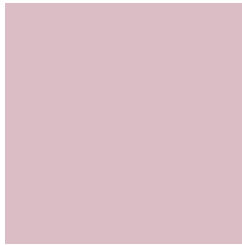
17.8197, 9.1289, 3.4308



1.1900, 0.6056, 0.4096

Previews

White Background



This preview shows how the XYZ color 57.4891, 55.4865, 60.5033 looks on a white background.

Color Contrast Check

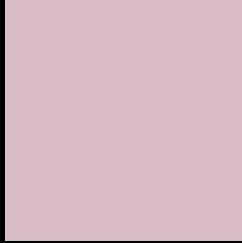
Large Text (above 18pt) WCAG AA × Fail

Any Text WCAG AA × Fail

Large Text (above 18pt) WCAG AAA × Fail

Any Text WCAG AAA × Fail

Black Background



This preview shows how the XYZ color 57.4891, 55.4865, 60.5033 looks on a black background.

Color Contrast Check

Large Text (above 18pt) WCAG AA ✓ Pass

Any Text WCAG AA ✓ Pass

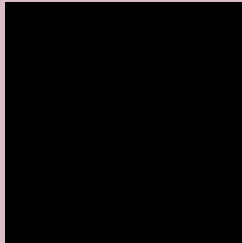
Large Text (above 18pt) WCAG AAA ✓ Pass

Any Text WCAG AAA ✓ Pass

If you want to check with other color combinations, try the [Color Contrast Checker](#).

XYZ 57.4891, 55.4865, 60.5033

Background



This preview shows how black text looks on a background with the XYZ color 57.4891, 55.4865, 60.5033.



This preview shows how white text looks on a background with the XYZ color 57.4891, 55.4865,

Color Blindness Simulation

Color vision deficiency is a very complex topic, and I could not describe the different causes any better than Wikipedia does, so if you want to learn more, you should check out their [article about color blindness](#).

Dichromacy



Original Color

57.4891, 55.4865, 60.5033

Protanopia

53.8357, 55.8390, 63.1989

Deuteranopia

56.5158, 55.3052, 60.5196



Tritanopia

58.2779, 55.4939, 64.1397

Trichromacy



Original Color

57.4891, 55.4865, 60.5033

Protanomaly

54.9489, 55.4319, 62.4469

Deuteranomaly

56.8104, 55.4571, 60.5334

Tritanomaly

58.0410, 55.3991, 62.8923

Monochromacy



Original Color

57.4891, 55.4865, 60.5033

Achromatopsia

54.2854, 57.1125, 62.1955

Achromatomaly

55.1617, 56.2292, 61.3721

CSS Examples

Text

The CSS property to change the color of the text to XYZ 57.4891, 55.4865, 60.5033 is called "color". The color property can be set on classes, ids or directly on the HTML element.

This example shows how text in the color `rgb(219, 189, 197)` looks like.

```
.text, #text, p{  
    color:rgb(219, 189, 197)  
}
```

If you want to add a text shadow in that color use the text-shadow property, you can generate a text shadow directly with our [CSS Text Shadow Generator](#).

Here you see how black text with a 4 pixel rgb(219, 189, 197) colored shadow looks like.

```
.shadow{ text-shadow: 4px 4px 2px rgb(219, 189, 197) }
```

Border

The CSS property to change the border of an element to XYZ 57.4891, 55.4865, 60.5033 is called "border". The border property can be set on classes, ids or directly on the HTML element.

This example shows the color as border, it can be applied via the CSS property "border" or "border-color".

```
.border, #border, table{ border:4px solid rgb(219, 189, 197) }
```


If only the border color should be changed use the property `border-color`.

```
.border{ border-color:rgb(219, 189, 197) }
```

If you want to add a box shadow in that color use:

Here you see how a box with a 4 pixel `rgb(219, 189, 197)` colored shadow looks like.

```
.boxshadow{ -moz-box-shadow:4px 4px 4px  
4px rgb(219, 189, 197); -webkit-box-  
shadow:4px 4px 4px 4px rgb(219, 189, 197);  
box-shadow:4px 4px 4px 4px rgb(219, 189,  
197) }
```

Background

The CSS property to change the background color of an element to XYZ 57.4891, 55.4865, 60.5033 is called "background". The background property can be set on classes, ids or directly on the HTML element.

```
.background, #background, body{  
background: rgb(219, 189, 197) }
```

If only the background color should be changed can be used:

```
.background{ background-color: rgb(219,  
189, 197) }
```

This example shows the color as background, it is applied via the CSS property "background".

To optimize and compress your CSS code, you can use our [online CSS compressor and optimizer](#) based on csstidy. If you want to create a linear or radial gradient as background or border, check our [CSS Gradient Generator](#).

Hey! You found this booklet interesting? Support Converting Colors with the new Membership Option!

The pro membership hides all ads, plus gives you double the colors in the color bucket, and more awesome pro features!

[Learn more, Memberships starting at \\$2.50/m!](#)

**Follow me
on Twitter!**

@ConvertingColor