

Converting Colors

XYZ(57.4941, 55.5254, 58.9482)

Have a look what the booklet for
XYZ(57.4941, 55.5254, 58.9482)
contains.

XYZ(57.4504, 55.5059, 58.7247)	3
<i>Conversions</i>	4
<i>Details</i>	6
<i>Harmonies</i>	12
<i>Previews</i>	24
<i>Color Blindness Simulation</i>	28
<i>CSS Examples</i>	31

Color

**XYZ(57.4504, 55.5059,
58.7247)**

Conversions

Conversions Part 1

Format	Color
Hex	DCBDC2
RGB	220, 189, 194
RGB Percent	86%, 74%, 76%
CMY	0.1373, 0.2588, 0.2392
CMYK	0.00, 0.14, 0.12, 0.14
HSL	350°, 31%, 80%
HSV	350°, 14%, 86%
XYZ	57.4504, 55.5059, 58.7247
YIQ	198.8390, 16.8710, 8.1270

Conversions

Conversions Part 2

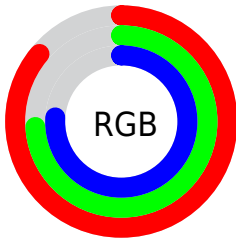
Format	Color
RYB	220, 189, 194
Decimal	14466498
CIELab	79.33, 11.84, 1.57
CIELCh	79, 11.945, 7.537
Yxy	55.5059, 0.3346, 0.3233
Android (android.graphics.Color)	4292656578 (0xFFDCBDC2)
YUV	198.8390, -2.3856, 18.5582
Hunter-Lab	74.5023, 7.2664, 5.4176

Details

The XYZ color **57.4504, 55.5059, 58.7247** is a light color, and the websafe version is hex **FFCCCC**. A complement of this color would be **58.8474, 66.9129, 74.1071**, and the grayscale version is **54.1959, 57.0183, 62.0929**.

A 20% lighter version of the original color is **91.1477, 93.4669, 103.6794**, and **29.0548, 27.5011, 28.5878** is the 20% darker color. If you saturate the color by 10%, you get **51.1269, 45.9718, 47.0186**, and if you desaturate by 10%, it is **64.7523, 66.5835, 72.0280**.

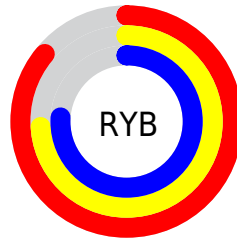
Distribution



Red (86%)

Green (74%)

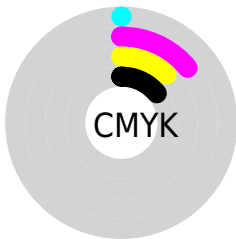
Blue (76%)



Red (86%)

Yellow (74%)

Blue (76%)

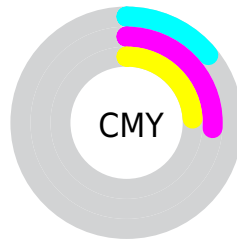


Cyan (0%)

Magenta (14%)

Yellow (12%)

Black (14%)



Cyan (14%)


Magenta (26%)


Yellow (24%)

Brightness & Saturation Gradients


These gradients show how the XYZ color 57.4504, 55.5059, 58.7247 changes by changing the brightness by 10 percent. The first figure shows a shift by +10% for each color and the second figure -10%.

Similar to the brightness gradients but the following saturation gradients show a change of the XYZ color 57.4504, 55.5059, 58.7247 by changing the saturation by 10% instead.


 57.4504, 55.5059,
58.7247

 57.4504, 55.5059,
58.7247


405.1218,
407.8268, 437.5544

 41.6085, 39.8069,
41.9730


 100.2497, 98.2818,
104.5026

 28.9846, 27.3880,
28.7547


127.9377,
126.1275, 134.3659

 19.2134, 17.8649,
18.6514


160.3052,
158.7908, 169.4368

 11.9295, 10.8530,
11.2444

197.7175,
196.6563, 210.1339

 6.7676, 5.9681,
6.1152

240.5400,
240.1082, 256.8756

 3.3622, 2.8257,
2.8454

289.1380,

 1.3481, 1.0414,

289.5310, 310.0806

1.0162

343.8768,
345.3091, 370.1673

■ 0.2188, 0.0000,
0.0000

■ 0.0000, 0.0000,
0.0000

■ 57.4504, 55.5059,
58.7247

■ 57.4504, 55.5059,
58.7247

■ 51.1269, 45.9718,
47.0186

■ 64.7523, 66.5835,
72.0280

■ 45.7354, 37.9057,
36.8461

■ 73.0669, 79.2611,
86.9821

■ 41.2329, 31.2365,
28.1442

■ 82.4311, 93.5980,
103.6416

■ 37.5710, 25.8847,
20.8444

■ 83.3255, 93.9558,
108.3513

■ 34.6968, 21.7624,
14.8725

■ 32.5509, 18.7713,
10.1475

■ 31.0656, 16.7977,
6.5792

■ 30.1599, 15.7039,
4.0647

■ 29.8257, 15.3399,
3.0151

Harmonies

Analogous

The Analogous color harmony consists of three colors that are next to each other on the color wheel.



57.1236, 55.5059, 65.6121



57.4504, 55.5059, 58.7247



56.4897, 55.5059, 52.7588

Triad

The Triadic color harmony groups three colors that are evenly spaced from another and form a triangle on the color wheel.



57.4504, 55.5059, 58.7247



50.0029, 55.5059, 50.5788



51.0182, 55.5059, 73.4490

Complementary

The Complementary color scheme is a pair of colors which are on the opposite of each other on the color wheel.



57.4504, 55.5059, 58.7247



58.8474, 66.9129, 74.1071

Split Complementary

Split-complementary colors differ from the complementary color scheme. The scheme consists of three colors, the original color and two neighbors of the complement color.



49.1919, 55.5059, 68.8250



57.4504, 55.5059, 58.7247



48.6182, 55.5059, 55.5405

Square

The Square scheme is like the rectangle color scheme, but the four colors are evenly spaced on the color wheel.



57.4504, 55.5059, 58.7247



52.1555, 55.5059, 48.2926



48.3259, 55.5059, 62.1812



53.3624, 55.5059, 74.4625

Rectangle

The Rectangle color scheme consists of four colors that form a rectangle on the color wheel.



57.4504, 55.5059, 58.7247



55.2649, 55.5059, 49.9870



48.3259, 55.5059, 62.1812



50.3255, 55.5059, 72.2493

Sweetspot

The Sweet Spot groups the original color and five complimentary colors.



57.4520, 55.5084, 58.7259



90.5347, 93.1250, 100.7498



59.0930, 55.9869, 75.4027



19.2019, 19.6646, 21.2455



0.0000, 0.0000, 0.0000



20.3446, 21.4041, 23.3091

Same Dimension

The Same Dimension uses a secret algorithm to generate beautiful new colors.



57.4520, 55.5084, 58.7259



77.4346, 73.2676, 76.8286



59.2024, 59.8923, 56.5872



13.1412, 13.0856, 14.0049



17.5312, 9.0135, 1.9112



1.1627, 0.5947, 0.2660

Inverse Universe

The Inverse Universe completely reimagines the original color for something new.



57.4520, 55.5084, 58.7259



77.4346, 73.2676, 76.8286



56.8709, 61.9168, 76.6644



13.1412, 13.0856, 14.0049



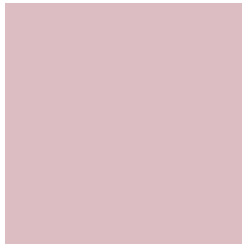
17.5312, 9.0135, 1.9112



1.1627, 0.5947, 0.2660

Previews

White Background



This preview shows how the XYZ color 57.4504, 55.5059, 58.7247 looks on a white background.

Color Contrast Check

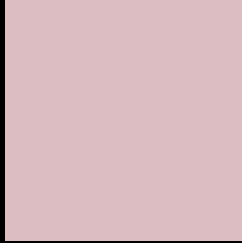
Large Text (above 18pt) WCAG AA × Fail

Any Text WCAG AA × Fail

Large Text (above 18pt) WCAG AAA × Fail

Any Text WCAG AAA × Fail

Black Background



This preview shows how the XYZ color 57.4504, 55.5059, 58.7247 looks on a black background.

Color Contrast Check

Large Text (above 18pt) WCAG AA ✓ Pass

Any Text WCAG AA ✓ Pass

Large Text (above 18pt) WCAG AAA ✓ Pass

Any Text WCAG AAA ✓ Pass

If you want to check with other color combinations, try the [Color Contrast Checker](#).

XYZ 57.4504, 55.5059, 58.7247

Background



This preview shows how black text looks on a background with the XYZ color 57.4504, 55.5059, 58.7247.



This preview shows how white text looks on a background with the XYZ color 57.4504, 55.5059,

Color Blindness Simulation

Color vision deficiency is a very complex topic, and I could not describe the different causes any better than Wikipedia does, so if you want to learn more, you should check out their [article about color blindness](#).

Dichromacy



Original Color

57.4504, 55.5059, 58.7247

Protanopia

53.7524, 55.8364, 61.3705

Deuteranopia

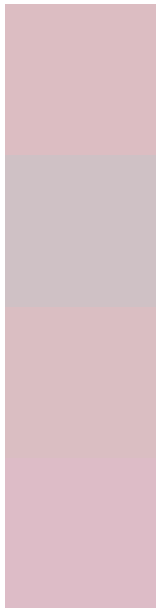
56.7663, 55.4737, 58.7545



Tritanopia

58.4627, 55.6029, 63.5282

Trichromacy



Original Color

57.4504, 55.5059, 58.7247

Protanomaly

54.8801, 55.4365, 60.6312

Deuteranomaly

57.0645, 55.6274, 58.7685

Tritanomaly

58.1108, 55.4621, 61.6753

Monochromacy



Original Color

57.4504, 55.5059, 58.7247

Achromatopsia

54.2854, 57.1125, 62.1955

Achromatomaly

55.3253, 56.3268, 60.7795

CSS Examples

Text

The CSS property to change the color of the text to XYZ 57.4504, 55.5059, 58.7247 is called "color". The color property can be set on classes, ids or directly on the HTML element.

This example shows how text in the color `rgb(220, 189, 194)` looks like.

```
.text, #text, p{  
    color:rgb(220, 189, 194)  
}
```

If you want to add a text shadow in that color use the text-shadow property, you can generate a text shadow directly with our [CSS Text Shadow Generator](#).

Here you see how black text with a 4 pixel rgb(220, 189, 194) colored shadow looks like.

```
.shadow{ text-shadow: 4px 4px 2px rgb(220, 189, 194) }
```

Border

The CSS property to change the border of an element to XYZ 57.4504, 55.5059, 58.7247 is called "border". The border property can be set on classes, ids or directly on the HTML element.

This example shows the color as border, it can be applied via the CSS property "border" or "border-color".

```
.border, #border, table{ border:4px solid rgb(220, 189, 194) }
```


If only the border color should be changed use the property border-color.

```
.border{ border-color:rgb(220, 189, 194) }
```

If you want to add a box shadow in that color use:

Here you see how a box with a 4 pixel rgb(220, 189, 194) colored shadow looks like.

```
.boxshadow{ -moz-box-shadow:4px 4px 4px  
4px rgb(220, 189, 194); -webkit-box-  
shadow:4px 4px 4px 4px rgb(220, 189, 194);  
box-shadow:4px 4px 4px 4px rgb(220, 189,  
194) }
```

Background

The CSS property to change the background color of an element to XYZ 57.4504, 55.5059, 58.7247 is called "background". The background property can be set on classes, ids or directly on the HTML element.

```
.background, #background, body{  
background: rgb(220, 189, 194) }
```

If only the background color should be changed can be used:

```
.background{ background-color: rgb(220,  
189, 194) }
```

This example shows the color as background, it is applied via the CSS property "background".

To optimize and compress your CSS code, you can use our [online CSS compressor and optimizer](#) based on csstidy. If you want to create a linear or radial gradient as background or border, check our [CSS Gradient Generator](#).

Hey! You found this booklet interesting? Support Converting Colors with the new Membership Option!

The pro membership hides all ads, plus gives you double the colors in the color bucket, and more awesome pro features!

[Learn more, Memberships starting at \\$2.50/m!](#)

**Follow me
on Twitter!**

@ConvertingColor