

# Converting Colors

XYZ(57.5213, 55.0558, 51.8371)

Have a look what the booklet for  
XYZ(57.5213, 55.0558, 51.8371)  
contains.

<b>XYZ(57.5779, 55.0868, 51.8541)</b> .....	3
<b><i>Conversions</i></b> .....	4
<b><i>Details</i></b> .....	6
<b><i>Harmonies</i></b> .....	12
<b><i>Previews</i></b> .....	24
<b><i>Color Blindness Simulation</i></b> .....	28
<b><i>CSS Examples</i></b> .....	31

# Color

**XYZ(57.5779, 55.0868,  
51.8541)**

# Conversions

## Conversions Part 1

Format	Color
Hex	E2BBB6
RGB	226, 187, 182
RGB Percent	89%, 73%, 71%
CMY	0.1137, 0.2666, 0.2863
CMYK	0.00, 0.17, 0.19, 0.11
HSL	7°, 43%, 80%
HSV	7°, 19%, 89%
XYZ	57.5779, 55.0868, 51.8541
YIQ	198.0910, 24.8490, 6.7130

# Conversions

## Conversions Part 2

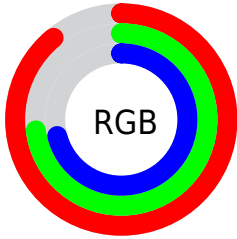
Format	Color
R <sub>Y</sub> B	226, 188, 182
Decimal	14859190
CIE Lab	79.09, 13.19, 7.77
CIE LCh	79, 15.307, 30.487
Yxy	55.0868, 0.3500, 0.3348
Android (android.graphics.Color)	4293049270 (0xFFE2BBB6)
YUV	198.0910, -7.9329, 24.4762
Hunter-Lab	74.2205, 8.5888, 10.5314

# Details

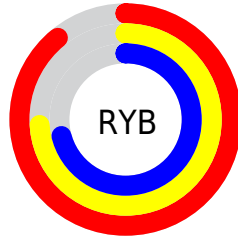
The XYZ color **57.5779, 55.0868, 51.8541** is a light color, and the websafe version is hex **FFCCCC**. A complement of this color would be **58.8749, 67.1475, 81.8098**, and the grayscale version is **53.7692, 56.5694, 61.6041**.

A 20% lighter version of the original color is **88.7232, 91.5342, 93.8806**, and **29.0651, 27.1812, 24.4835** is the 20% darker color. If you saturate the color by 10%, you get **51.4714, 46.3146, 39.2105**, and if you desaturate by 10%, it is **64.6570, 65.2001, 66.6828**.

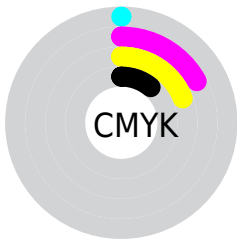
# Distribution



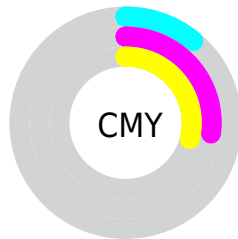
- Red (89%)
- Green (73%)
- Blue (71%)



- Red (89%)
- Yellow (74%)
- Blue (71%)



- Cyan (0%)
- Magenta (17%)
- Yellow (19%)
- Black (11%)




- Cyan (11%)
- Magenta (27%)
- Yellow (29%)


# Brightness & Saturation Gradients

These gradients show how the XYZ color 57.5779, 55.0868, 51.8541 changes by changing the brightness by 10 percent. The first figure shows a shift by +10% for each color and the second figure -10%.


Similar to the brightness gradients but the following saturation gradients show a change of the XYZ color 57.5779, 55.0868, 51.8541 by changing the saturation by 10% instead.

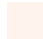



 57.5779, 55.0868,  
51.8541

 57.5779, 55.0868,  
51.8541

405.5905,  
406.2409, 410.8140

 41.7113, 39.4712,  
36.5074

 100.4344, 97.6681,  
94.3404

 29.0655, 27.1265,  
24.5335


128.1551,  
125.4026, 122.3171

 19.2749, 17.6683,  
15.5140


160.5579,  
157.9456, 155.3408

 11.9742, 10.7121,  
9.0303

198.0081,  
195.6814, 193.8301

 6.7982, 5.8736,  
4.6639

240.8711,  
238.9945, 238.2035

 3.3814, 2.7684,  
1.9962

289.5123,

 1.3585, 1.0120,

288.2691, 288.8796

0.5529

344.2970,  
343.8898, 346.2769

■ 0.2264, 0.0000,  
0.0000

■ 0.0000, 0.0000,  
0.0000

■ 57.5779, 55.0868,  
51.8541

■ 57.5779, 55.0868,  
51.8541

■ 51.4714, 46.3146,  
39.2105

■ 64.6570, 65.2001,  
66.6828

■ 46.2907, 38.8200,  
28.6454

■ 72.7441, 76.6998,  
83.7895

■ 41.9916, 32.5455,  
20.0484

■ 81.8782, 89.6381,  
103.2659

■ 38.5245, 27.4264,  
13.2974

■ 85.1743, 94.9089,  
108.4378

■ 35.8351, 23.3918,  
8.2567

■ 33.8622, 20.3631,  
4.7721

■ 32.5355, 18.2509,  
2.6613

■ 31.7575, 16.9448,  
1.6313

■ 31.7271, 16.8946,  
1.5888

# Harmonies

## Analogous

The Analogous color harmony consists of three colors that are next to each other on the color wheel.



58.4461, 55.0868, 59.8375



57.5779, 55.0868, 51.8541



55.3016, 55.0868, 46.5156

# Triad

The Triadic color harmony groups three colors that are evenly spaced from another and form a triangle on the color wheel.



57.5779, 55.0868, 51.8541



47.4175, 55.0868, 52.0788



52.4082, 55.0868, 78.3970

# Complementary

The Complementary color scheme is a pair of colors which are on the opposite of each other on the color wheel.



57.5779, 55.0868, 51.8541



58.8749, 67.1475, 81.8098

# Split Complementary

Split-complementary colors differ from the complementary color scheme. The scheme consists of three colors, the original color and two neighbors of the complement color.



49.5214, 55.0868, 75.8205



57.5779, 55.0868, 51.8541



46.7088, 55.0868, 60.1230

# Square

The Square scheme is like the rectangle color scheme, but the four colors are evenly spaced on the color wheel.



57.5779, 55.0868, 51.8541



49.4383, 55.0868, 46.6363



47.4642, 55.0868, 68.9137



55.3912, 55.0868, 75.6537



# Rectangle

The Rectangle color scheme consists of four colors that form a rectangle on the color wheel.



57.5779, 55.0868, 51.8541



53.3339, 55.0868, 44.8899



47.4642, 55.0868, 68.9137



51.3948, 55.0868, 78.1218

# Sweetspot

The Sweet Spot groups the original color and five complimentary colors.



57.5794, 55.0893, 51.8552



88.5094, 90.7049, 95.0475



61.2239, 54.8779, 76.1927



18.7986, 19.2068, 20.0357



0.0000, 0.0000, 0.0000



20.3446, 21.4041, 23.3091



# Same Dimension

The Same Dimension uses a secret algorithm to generate beautiful new colors.



57.5794, 55.0893, 51.8552



72.6044, 67.9829, 61.7290



62.4617, 64.8539, 53.4827



13.8321, 13.9502, 14.2704



18.1435, 9.7250, 0.9208



1.3001, 0.7590, 0.0780



# Inverse Universe

The Inverse Universe completely reimagines the original color for something new.



58.8749, 67.1475, 81.8098



74.5750, 86.3405, 107.3426



53.5813, 56.5603, 80.0453



13.9765, 15.2921, 17.6027



19.7098, 26.8891, 45.1997

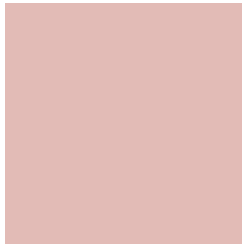


1.4045, 1.9405, 3.1458



# Previews

## White Background



This preview shows how the XYZ color 57.5779, 55.0868, 51.8541 looks on a white background.

## Color Contrast Check

Large Text (above 18pt) WCAG AA × Fail

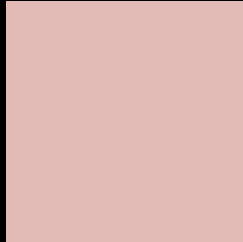
Any Text WCAG AA × Fail

Large Text (above 18pt) WCAG AAA × Fail

Any Text WCAG AAA × Fail



# Black Background



This preview shows how the XYZ color 57.5779, 55.0868, 51.8541 looks on a black background.

## Color Contrast Check

Large Text (above 18pt) WCAG AA ✓ Pass

Any Text WCAG AA ✓ Pass

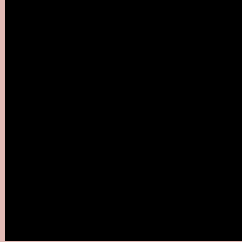
Large Text (above 18pt) WCAG AAA ✓ Pass

Any Text WCAG AAA ✓ Pass

If you want to check with other color combinations, try the [Color Contrast Checker](#).

**XYZ 57.5779, 55.0868, 51.8541**

## **Background**



This preview shows how black text looks on a background with the XYZ color 57.5779, 55.0868, 51.8541.



This preview shows how white text looks on a background with the XYZ color 57.5779, 55.0868,



# Color Blindness Simulation

Color vision deficiency is a very complex topic, and I could not describe the different causes any better than Wikipedia does, so if you want to learn more, you should check out their [article about color blindness](#).

## Dichromacy



### Original Color

57.5779, 55.0868, 51.8541

### Protanopia

52.7352, 55.1319, 54.3165

### Deuteranopia

56.1563, 54.9882, 51.9100



## Tritanopia

59.4442, 54.8985, 61.4962

# Trichromacy



## Original Color

57.5779, 55.0868, 51.8541

## Protanomaly

54.4706, 55.0509, 53.6539

## Deuteranomaly

56.5509, 54.8734, 51.8670

## Tritanomaly

58.6532, 54.8791, 57.9534

# Monochromacy



## Original Color

57.5779, 55.0868, 51.8541

## Achromatopsia

53.6758, 56.4712, 61.4971

## Achromatomaly

54.8186, 55.7992, 57.7502

# CSS Examples

## Text

The CSS property to change the color of the text to XYZ 57.5779, 55.0868, 51.8541 is called "color". The color property can be set on classes, ids or directly on the HTML element.

This example shows how text in the color rgb(226, 187, 182) looks like.

```
.text, #text, p{  
    color:rgb(226, 187, 182)  
}
```

If you want to add a text shadow in that color use the text-shadow property, you can generate a text shadow directly with our [CSS Text Shadow Generator](#).

Here you see how black text with a 4 pixel rgb(226, 187, 182) colored shadow looks like.

```
.shadow{ text-shadow: 4px 4px 2px rgb(226, 187, 182) }
```

## Border

The CSS property to change the border of an element to XYZ 57.5779, 55.0868, 51.8541 is called "border". The border property can be set on classes, ids or directly on the HTML element.

This example shows the color as border, it can be applied via the CSS property "border" or "border-color".

```
.border, #border, table{ border:4px solid rgb(226, 187, 182) }
```



If only the border color should be changed use the property `border-color`.

```
.border{ border-color:rgb(226, 187, 182) }
```

If you want to add a box shadow in that color use:

Here you see how a box with a 4 pixel `rgb(226, 187, 182)` colored shadow looks like.

```
.boxshadow{ -moz-box-shadow:4px 4px 4px  
4px rgb(226, 187, 182); -webkit-box-  
shadow:4px 4px 4px 4px rgb(226, 187, 182);  
box-shadow:4px 4px 4px 4px rgb(226, 187,  
182) }
```

# Background

The CSS property to change the background color of an element to XYZ 57.5779, 55.0868, 51.8541 is called "background". The background property can be set on classes, ids or directly on the HTML element.

```
.background, #background, body{  
background: rgb(226, 187, 182) }
```

If only the background color should be changed can be used:

```
.background{ background-color: rgb(226,  
187, 182) }
```

This example shows the color as background, it is applied via the CSS property "background".

To optimize and compress your CSS code, you can use our [online CSS compressor and optimizer](#) based on csstidy. If you want to create a linear or radial gradient as background or border, check our [CSS Gradient Generator](#).

Hey! You found this booklet interesting? Support Converting Colors with the new Membership Option!

The pro membership hides all ads, plus gives you double the colors in the color bucket, and more awesome pro features!

**[Learn more, Memberships starting at \\$2.50/m!](#)**

**Follow me  
on Twitter!**

@ConvertingColor