

Converting Colors

XYZ(57.5271, 57.0782, 63.0362)

Have a look what the booklet for
XYZ(57.5271, 57.0782, 63.0362)
contains.

XYZ(57.5660, 57.0968, 63.2451)	3
<i>Conversions</i>	4
<i>Details</i>	6
<i>Harmonies</i>	12
<i>Previews</i>	24
<i>Color Blindness Simulation</i>	28
<i>CSS Examples</i>	31

Color

**XYZ(57.5660, 57.0968,
63.2451)**

Conversions

Conversions Part 1

Format	Color
Hex	D6C2C9
RGB	214, 194, 201
RGB Percent	84%, 76%, 79%
CMY	0.1608, 0.2392, 0.2118
CMYK	0.00, 0.09, 0.06, 0.16
HSL	339°, 20%, 80%
HSV	339°, 9%, 84%
XYZ	57.5660, 57.0968, 63.2451
YIQ	200.7780, 9.6730, 6.4170

Conversions

Conversions Part 2

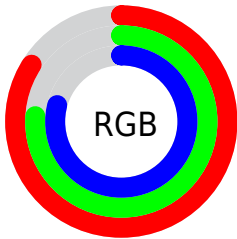
Format	Color
R _Y B	214, 194, 201
Decimal	14074569
CIE Lab	80.23, 8.24, -0.95
CIE LCh	80, 8.291, 353.406
Yxy	57.0968, 0.3236, 0.3209
Android (android.graphics.Color)	4292264649 (0xFFD6C2C9)
YUV	200.7780, 0.1094, 11.5957
Hunter-Lab	75.5624, 3.7531, 3.2685

Details

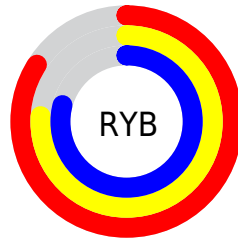
The XYZ color **57.5660, 57.0968, 63.2451** is a light color, and the websafe version is hex **CCCCCC**. A complement of this color would be **57.5594, 64.0690, 68.3675**, and the grayscale version is **55.3764, 58.2603, 63.4455**.

A 20% lighter version of the original color is **93.7872, 97.4744, 108.4791**, and **28.9426, 28.2337, 31.5280** is the 20% darker color. If you saturate the color by 10%, you get **51.5790, 47.6239, 53.5374**, and if you desaturate by 10%, it is **64.3904, 68.0057, 73.9647**.

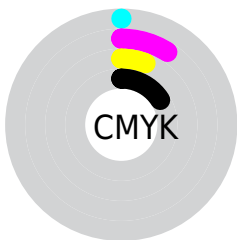
Distribution



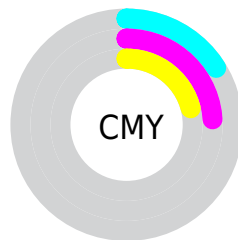
- Red (84%)
- Green (76%)
- Blue (79%)



- Red (84%)
- Yellow (76%)
- Blue (79%)



- Cyan (0%)
- Magenta (9%)
- Yellow (6%)
- Black (16%)



- Cyan (16%)
- Magenta (24%)
- Yellow (21%)

Brightness & Saturation Gradients

These gradients show how the XYZ color 57.5660, 57.0968, 63.2451 changes by changing the brightness by 10 percent. The first figure shows a shift by +10% for each color and the second figure -10%.

Similar to the brightness gradients but the following saturation gradients show a change of the XYZ color 57.5660, 57.0968, 63.2451 by changing the saturation by 10% instead.

■ 57.5660, 57.0968,
63.2451

■ 57.5660, 57.0968,
63.2451

405.5468,
413.8119, 454.5909

■ 41.7017, 41.0830,
45.5972

□ 100.4172,
100.6064, 111.1120

■ 29.0579, 28.3839,
31.5818

128.1348,
128.8710, 142.1682

■ 19.2691, 18.6153,
20.7801

160.5343,
161.9879, 178.5309

■ 11.9701, 11.3926,
12.7737

197.9810,
200.3416, 220.6186

■ 6.7954, 6.3316,
7.1440

240.8402,
244.3165, 268.8499

■ 3.3796, 3.0477,
3.4725

289.4774,

■ 1.3576, 1.1567,

294.2969, 323.6434

1.3407

344.2578,
350.6672, 385.4175

■ 0.2257, 0.0259,
0.0948

■ 0.0000, 0.0000,
0.0000

■ 57.5660, 57.0968,
63.2451

■ 57.5660, 57.0968,
63.2451

■ 51.5790, 47.6239,
53.5374

■ 64.3904, 68.0057,
73.9647

■ 46.3914, 39.5195,
44.8075

■ 72.0784, 80.3995,
85.7216

■ 41.9695, 32.7221,
37.0249

■ 79.6302, 92.2716,
98.2010

■ 38.2752, 27.1622,
30.1557

■ 81.5419, 93.0363,
108.2678

■ 35.2670, 22.7641,
24.1639

■ 32.8990, 19.4434,
19.0111

■ 31.1193, 17.1046,
14.6552

■ 29.8672, 15.6345,
11.0497

■ 29.0443, 14.8457,
8.1336

Harmonies

Analogous

The Analogous color harmony consists of three colors that are next to each other on the color wheel.



56.9236, 57.0968, 67.8917



57.5660, 57.0968, 63.2451



57.3103, 57.0968, 58.5396

Triad

The Triadic color harmony groups three colors that are evenly spaced from another and form a triangle on the color wheel.



57.5660, 57.0968, 63.2451



52.9864, 57.0968, 54.0022



52.3519, 57.0968, 69.9554

Complementary

The Complementary color scheme is a pair of colors which are on the opposite of each other on the color wheel.



57.5660, 57.0968, 63.2451



57.5594, 64.0690, 68.3675

Split Complementary

Split-complementary colors differ from the complementary color scheme. The scheme consists of three colors, the original color and two neighbors of the complement color.



51.3369, 57.0968, 65.9448



57.5660, 57.0968, 63.2451



51.6978, 57.0968, 56.7768

Square

The Square scheme is like the rectangle color scheme, but the four colors are evenly spaced on the color wheel.



57.5660, 57.0968, 63.2451



54.6434, 57.0968, 53.3627



51.1000, 57.0968, 61.1046



53.8960, 57.0968, 71.8938

Rectangle

The Rectangle color scheme consists of four colors that form a rectangle on the color wheel.



57.5660, 57.0968, 63.2451



56.6674, 57.0968, 55.9821



51.1000, 57.0968, 61.1046



51.9388, 57.0968, 68.7952

Sweetspot

The Sweet Spot groups the original color and five complimentary colors.



57.5676, 57.0993, 63.2463



91.8674, 94.8996, 103.9399



57.1635, 56.7067, 71.5518



19.4856, 20.0279, 21.9688



0.0000, 0.0000, 0.0000



20.3446, 21.4041, 23.3091

Same Dimension

The Same Dimension uses a secret algorithm to generate beautiful new colors.



57.5676, 57.0993, 63.2463



83.9470, 82.2715, 91.3957



57.4374, 58.1262, 59.2342



12.6009, 12.4918, 13.8385



17.5717, 8.9650, 5.0484



1.0984, 0.5562, 0.5077

Inverse Universe

The Inverse Universe completely reimagines the original color for something new.



57.5676, 57.0993, 63.2463



83.9470, 82.2715, 91.3957



57.6819, 62.9145, 72.7227



12.6009, 12.4918, 13.8385



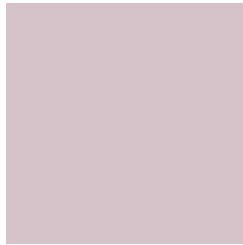
17.5717, 8.9650, 5.0484



1.0984, 0.5562, 0.5077

Previews

White Background



This preview shows how the XYZ color 57.5660, 57.0968, 63.2451 looks on a white background.

Color Contrast Check

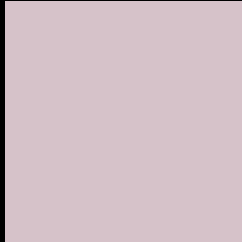
Large Text (above 18pt) WCAG AA × Fail

Any Text WCAG AA × Fail

Large Text (above 18pt) WCAG AAA × Fail

Any Text WCAG AAA × Fail

Black Background



This preview shows how the XYZ color 57.5660, 57.0968, 63.2451 looks on a black background.

Color Contrast Check

Large Text (above 18pt) WCAG AA ✓ Pass

Any Text WCAG AA ✓ Pass

Large Text (above 18pt) WCAG AAA ✓ Pass

Any Text WCAG AAA ✓ Pass

If you want to check with other color combinations, try the [Color Contrast Checker](#).

XYZ 57.5660, 57.0968, 63.2451

Background



This preview shows how black text looks on a background with the XYZ color 57.5660, 57.0968, 63.2451.



This preview shows how white text looks on a background with the XYZ color 57.5660, 57.0968,

63.2451.

Color Blindness Simulation

Color vision deficiency is a very complex topic, and I could not describe the different causes any better than Wikipedia does, so if you want to learn more, you should check out their [article about color blindness](#).

Dichromacy



Original Color

57.5660, 57.0968, 63.2451

Protanopia

55.0610, 57.1175, 64.6227

Deuteranopia

58.2279, 57.1087, 63.2125



Tritanopia

58.4795, 57.1411, 67.6216

Trichromacy



Original Color

57.5660, 57.0968, 63.2451

Protanomaly

56.0805, 57.3186, 63.9849

Deuteranomaly

57.9315, 56.9559, 63.1986

Tritanomaly

58.1137, 56.9948, 65.6958

Monochromacy



Original Color

57.5660, 57.0968, 63.2451

Achromatopsia

55.5167, 58.4078, 63.6061

Achromatomaly

56.1903, 57.7270, 63.4392

CSS Examples

Text

The CSS property to change the color of the text to XYZ 57.5660, 57.0968, 63.2451 is called "color". The color property can be set on classes, ids or directly on the HTML element.

This example shows how text in the color `rgb(214, 194, 201)` looks like.

```
.text, #text, p{  
    color:rgb(214, 194, 201)  
}
```

If you want to add a text shadow in that color use the text-shadow property, you can generate a text shadow directly with our [CSS Text Shadow Generator](#).

Here you see how black text with a 4 pixel rgb(214, 194, 201) colored shadow looks like.

```
.shadow{ text-shadow: 4px 4px 2px rgb(214, 194, 201) }
```

Border

The CSS property to change the border of an element to XYZ 57.5660, 57.0968, 63.2451 is called "border". The border property can be set on classes, ids or directly on the HTML element.

This example shows the color as border, it can be applied via the CSS property "border" or "border-color".

```
.border, #border, table{ border:4px solid rgb(214, 194, 201) }
```


If only the border color should be changed use the property `border-color`.

```
.border{ border-color:rgb(214, 194, 201) }
```

If you want to add a box shadow in that color use:

Here you see how a box with a 4 pixel `rgb(214, 194, 201)` colored shadow looks like.

```
.boxshadow{ -moz-box-shadow:4px 4px 4px  
4px rgb(214, 194, 201); -webkit-box-  
shadow:4px 4px 4px 4px rgb(214, 194, 201);  
box-shadow:4px 4px 4px 4px rgb(214, 194,  
201) }
```

Background

The CSS property to change the background color of an element to XYZ 57.5660, 57.0968, 63.2451 is called "background". The background property can be set on classes, ids or directly on the HTML element.

```
.background, #background, body{  
background: rgb(214, 194, 201) }
```

If only the background color should be changed can be used:

```
.background{ background-color: rgb(214,  
194, 201) }
```

This example shows the color as background, it is applied via the CSS property "background".

To optimize and compress your CSS code, you can use our [online CSS compressor and optimizer](#) based on csstidy. If you want to create a linear or radial gradient as background or border, check our [CSS Gradient Generator](#).

Hey! You found this booklet interesting? Support Converting Colors with the new Membership Option!

The pro membership hides all ads, plus gives you double the colors in the color bucket, and more awesome pro features!

[Learn more, Memberships starting at \\$2.50/m!](#)

**Follow me
on Twitter!**

@ConvertingColor