

Converting Colors

XYZ(57.5776, 57.5806, 49.1572)

Have a look what the booklet for
XYZ(57.5776, 57.5806, 49.1572)
contains.

XYZ(57.7830, 57.8528, 49.1955)	3
<i>Conversions</i>	4
<i>Details</i>	6
<i>Harmonies</i>	12
<i>Previews</i>	24
<i>Color Blindness Simulation</i>	28
<i>CSS Examples</i>	31

Color

**XYZ(57.7830, 57.8528,
49.1955)**

Conversions

Conversions Part 1

Format	Color
Hex	DFC3B0
RGB	223, 195, 176
RGB Percent	87%, 76%, 69%
CMY	0.1255, 0.2353, 0.3098
CMYK	0.00, 0.13, 0.21, 0.13
HSL	24°, 42%, 78%
HSV	24°, 21%, 87%
XYZ	57.7830, 57.8528, 49.1955
YIQ	201.2060, 22.7870, 0.0270

Conversions

Conversions Part 2

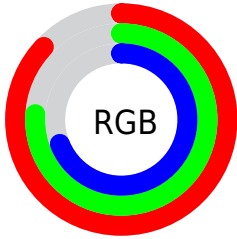
Format	Color
RYB	223, 208, 176
Decimal	14664624
CIELab	80.66, 6.94, 13.18
CIElCh	81, 14.899, 62.219
Yxy	57.8528, 0.3506, 0.3510
Android (android.graphics.Color)	4292854704 (0xFFDFC3B0)
YUV	201.2060, -12.4266, 19.1133
Hunter-Lab	76.0610, 2.4983, 14.8946

Details

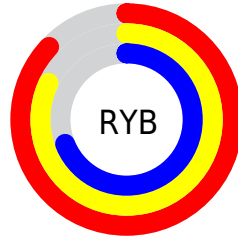
The XYZ color **57.7830, 57.8528, 49.1955** is a light color, and the websafe version is hex **FFCCCC**. A complement of this color would be **52.8162, 57.7420, 78.1740**, and the grayscale version is **55.7112, 58.6125, 63.8290**.

A 20% lighter version of the original color is **90.6159, 96.7070, 90.2343**, and **29.0364, 28.6953, 22.7473** is the 20% darker color. If you saturate the color by 10%, you get **52.9107, 51.3536, 37.5652**, and if you desaturate by 10%, it is **63.2857, 65.0318, 62.8255**.

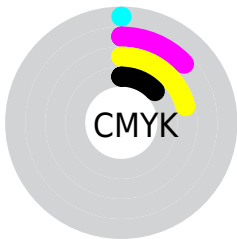
Distribution



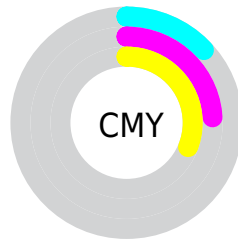
- Red (87%)
- Green (76%)
- Blue (69%)



- Red (87%)
- Yellow (82%)
- Blue (69%)



- Cyan (0%)
- Magenta (13%)
- Yellow (21%)
- Black (13%)





- Cyan (13%)
- Magenta (24%)
- Yellow (31%)

Brightness & Saturation Gradients


These gradients show how the XYZ color 57.7830, 57.8528, 49.1955 changes by changing the brightness by 10 percent. The first figure shows a shift by +10% for each color and the second figure -10%.


Similar to the brightness gradients but the following saturation gradients show a change of the XYZ color 57.7830, 57.8528, 49.1955 by changing the saturation by 10% instead.


 57.7830, 57.8528,
49.1955

 57.7830, 57.8528,
49.1955

406.3438,
416.6372, 400.1560

 41.8768, 41.6903,
34.4079


 100.7316,
101.7085, 90.3657

 29.1955, 28.8589,
22.9272


128.5047,
130.1705, 117.5854

 19.3738, 18.9741,
14.3350


160.9641,
163.5011, 149.7863

 12.0463, 11.6516,
8.2126

198.4752,
202.0847, 187.3868

 6.8476, 6.5069,
4.1416

241.4034,
246.3057, 230.8054

 3.4125, 3.1557,
1.7033

290.1140,

 1.3755, 1.2135,

296.5485, 280.4608

0.3630

344.9723,
353.1976, 336.7715

■ 0.2386, 0.0727,
0.0000

■ 0.0000, 0.0000,
0.0000

■ 57.7830, 57.8528,
49.1955

■ 57.7830, 57.8528,
49.1955

■ 52.9107, 51.3536,
37.5652

■ 63.2857, 65.0318,
62.8255

■ 48.6395, 45.5055,
27.8355

■ 69.4373, 72.9025,
78.5405

■ 44.9448, 40.2892,
19.9044

■ 76.2611, 81.4866,
96.4253

■ 41.7980, 35.6813,
13.6585

■ 82.0913, 90.1275,
107.6774

■ 39.1678, 31.6568,
8.9716

■ 84.2416, 94.4280,
108.3942

■ 37.0190, 28.1884,
5.6992

■ 35.3107, 25.2458,
3.6691

■ 34.1021, 23.0292,
2.6477

Harmonies

Analogous

The Analogous color harmony consists of three colors that are next to each other on the color wheel.



60.1307, 57.8528, 54.4068



57.7830, 57.8528, 49.1955



54.7592, 57.8528, 47.5729

Triad

The Triadic color harmony groups three colors that are evenly spaced from another and form a triangle on the color wheel.



57.7830, 57.8528, 49.1955



49.3007, 57.8528, 63.6483



58.1929, 57.8528, 78.3935

Complementary

The Complementary color scheme is a pair of colors which are on the opposite of each other on the color wheel.



57.7830, 57.8528, 49.1955



52.8162, 57.7420, 78.1740

Split Complementary

Split-complementary colors differ from the complementary color scheme. The scheme consists of three colors, the original color and two neighbors of the complement color.



55.2161, 57.8528, 81.4271



57.7830, 57.8528, 49.1955



50.1460, 57.8528, 72.4357

Square

The Square scheme is like the rectangle color scheme, but the four colors are evenly spaced on the color wheel.



57.7830, 57.8528, 49.1955



49.9315, 57.8528, 55.4409



52.2834, 57.8528, 79.1528



60.3735, 57.8528, 71.1991

Rectangle

The Rectangle color scheme consists of four colors that form a rectangle on the color wheel.



57.7830, 57.8528, 49.1955



52.7866, 57.8528, 48.6103



52.2834, 57.8528, 79.1528



57.2484, 57.8528, 79.9624

Sweetspot

The Sweet Spot groups the original color and five complimentary colors.



57.7845, 57.8554, 49.1967



89.8449, 93.3760, 95.4926



56.8804, 51.1086, 64.1202



19.1135, 19.8365, 20.1407



0.0000, 0.0000, 0.0000



20.3446, 21.4041, 23.3091

Same Dimension

The Same Dimension uses a secret algorithm to generate beautiful new colors.



57.7845, 57.8554, 49.1967



75.4914, 74.6724, 59.8690



63.4176, 69.1215, 51.0744



14.1599, 14.6058, 14.3797



20.1557, 13.7493, 1.5916



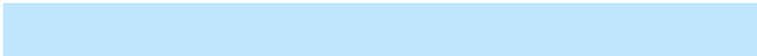
1.4833, 1.1254, 0.1390

Inverse Universe

The Inverse Universe completely reimagines the original color for something new.



52.8162, 57.7420, 78.1740



67.6797, 74.4907, 105.4188



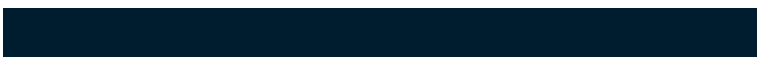
47.6874, 47.4845, 76.4644



13.6275, 14.5941, 17.4864



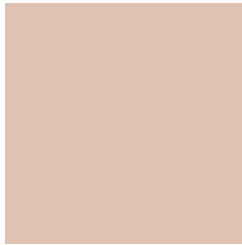
12.8632, 13.1960, 42.9175



0.9788, 1.0890, 3.0039

Previews

White Background



This preview shows how the XYZ color 57.7830, 57.8528, 49.1955 looks on a white background.

Color Contrast Check

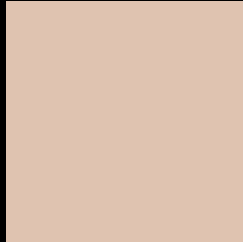
Large Text (above 18pt) WCAG AA × Fail

Any Text WCAG AA × Fail

Large Text (above 18pt) WCAG AAA × Fail

Any Text WCAG AAA × Fail

Black Background



This preview shows how the XYZ color 57.7830, 57.8528, 49.1955 looks on a black background.

Color Contrast Check

Large Text (above 18pt) WCAG AA ✓ Pass

Any Text WCAG AA ✓ Pass

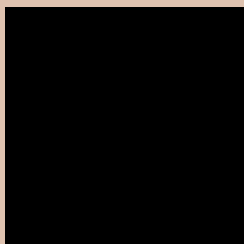
Large Text (above 18pt) WCAG AAA ✓ Pass

Any Text WCAG AAA ✓ Pass

If you want to check with other color combinations, try the [Color Contrast Checker](#).

XYZ 57.7830, 57.8528, 49.1955

Background



This preview shows how black text looks on a background with the XYZ color 57.7830, 57.8528, 49.1955.



This preview shows how white text looks on a background with the XYZ color 57.7830, 57.8528,

Color Blindness Simulation

Color vision deficiency is a very complex topic, and I could not describe the different causes any better than Wikipedia does, so if you want to learn more, you should check out their [article about color blindness](#).

Dichromacy



Original Color

57.7830, 57.8528, 49.1955

Protanopia

54.9847, 58.0782, 50.4317

Deuteranopia

58.9013, 57.7685, 49.1203



Tritanopia

61.4499, 58.0487, 66.3583

Trichromacy



Original Color

57.7830, 57.8528, 49.1955

Protanomaly

55.8615, 57.8586, 49.8186

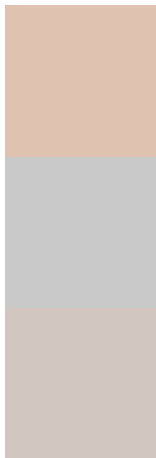
Deuteranomaly

58.4923, 57.8869, 49.1647

Tritanomaly

60.0640, 57.8082, 59.6221

Monochromacy



Original Color

57.7830, 57.8528, 49.1955

Achromatopsia

55.5167, 58.4078, 63.6061

Achromatomaly

56.2323, 58.2079, 58.1407

CSS Examples

Text

The CSS property to change the color of the text to XYZ 57.7830, 57.8528, 49.1955 is called "color". The color property can be set on classes, ids or directly on the HTML element.

This example shows how text in the color `rgb(223, 195, 176)` looks like.

```
.text, #text, p{  
    color:rgb(223, 195, 176)  
}
```

If you want to add a text shadow in that color use the text-shadow property, you can generate a text shadow directly with our [CSS Text Shadow Generator](#).

Here you see how black text with a 4 pixel rgb(223, 195, 176) colored shadow looks like.

```
.shadow{ text-shadow: 4px 4px 2px rgb(223, 195, 176) }
```

Border

The CSS property to change the border of an element to XYZ 57.7830, 57.8528, 49.1955 is called "border". The border property can be set on classes, ids or directly on the HTML element.

This example shows the color as border, it can be applied via the CSS property "border" or "border-color".

```
.border, #border, table{ border:4px solid rgb(223, 195, 176) }
```


If only the border color should be changed use the property `border-color`.

```
.border{ border-color:rgb(223, 195, 176) }
```

If you want to add a box shadow in that color use:

Here you see how a box with a 4 pixel `rgb(223, 195, 176)` colored shadow looks like.

```
.boxshadow{ -moz-box-shadow:4px 4px 4px  
4px rgb(223, 195, 176); -webkit-box-  
shadow:4px 4px 4px 4px rgb(223, 195, 176);  
box-shadow:4px 4px 4px 4px rgb(223, 195,  
176) }
```

Background

The CSS property to change the background color of an element to XYZ 57.7830, 57.8528, 49.1955 is called "background". The background property can be set on classes, ids or directly on the HTML element.

```
.background, #background, body{  
background: rgb(223, 195, 176) }
```

If only the background color should be changed can be used:

```
.background{ background-color: rgb(223,  
195, 176) }
```

This example shows the color as background, it is applied via the CSS property "background".

To optimize and compress your CSS code, you can use our [online CSS compressor and optimizer](#) based on csstidy. If you want to create a linear or radial gradient as background or border, check our [CSS Gradient Generator](#).

Hey! You found this booklet interesting? Support Converting Colors with the new Membership Option!

The pro membership hides all ads, plus gives you double the colors in the color bucket, and more awesome pro features!

[Learn more, Memberships starting at \\$2.50/m!](#)

**Follow me
on Twitter!**

@ConvertingColor