

Converting Colors

XYZ(57.6221, 57.1947, 63.6397)

Have a look what the booklet for
XYZ(57.6221, 57.1947, 63.6397)
contains.

XYZ(57.6840, 57.1440, 63.8667)	3
<i>Conversions</i>	4
<i>Details</i>	6
<i>Harmonies</i>	12
<i>Previews</i>	24
<i>Color Blindness Simulation</i>	28
<i>CSS Examples</i>	31

Color

**XYZ(57.6840, 57.1440,
63.8667)**

Conversions

Conversions Part 1

Format	Color
Hex	D6C2CA
RGB	214, 194, 202
RGB Percent	84%, 76%, 79%
CMY	0.1608, 0.2392, 0.2078
CMYK	0.00, 0.09, 0.06, 0.16
HSL	336°, 20%, 80%
HSV	336°, 9%, 84%
XYZ	57.6840, 57.1440, 63.8667
YIQ	200.8920, 9.3520, 6.7280

Conversions

Conversions Part 2

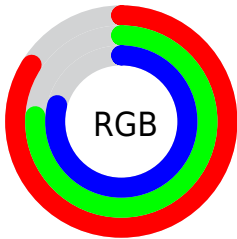
Format	Color
R _Y B	214, 194, 202
Decimal	14074570
CIE Lab	80.26, 8.41, -1.45
CIE LCh	80, 8.535, 350.210
Yxy	57.1440, 0.3228, 0.3198
Android (android.graphics.Color)	4292264650 (0xFFD6C2CA)
YUV	200.8920, 0.5462, 11.4957
Hunter-Lab	75.5937, 3.9209, 2.8233

Details

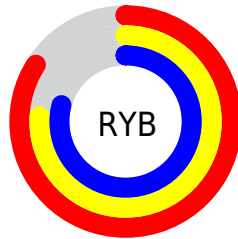
The XYZ color **57.6840, 57.1440, 63.8667** is a light color, and the websafe version is hex **CCCCCC**. A complement of this color would be **57.4375, 64.0202, 67.7255**, and the grayscale version is **55.4445, 58.3319, 63.5235**.

A 20% lighter version of the original color is **93.7872, 97.4744, 108.4791**, and **29.0215, 28.2652, 31.9431** is the 20% darker color. If you saturate the color by 10%, you get **51.8024, 47.7132, 54.7138**, and if you desaturate by 10%, it is **64.3813, 68.0021, 73.9172**.

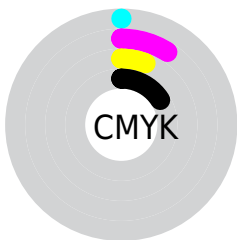
Distribution



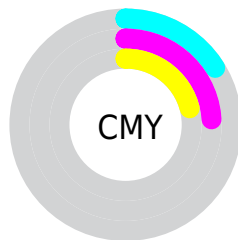
- Red (84%)
- Green (76%)
- Blue (79%)



- Red (84%)
- Yellow (76%)
- Blue (79%)



- Cyan (0%)
- Magenta (9%)
- Yellow (6%)
- Black (16%)



- Cyan (16%)
- Magenta (24%)
- Yellow (21%)

Brightness & Saturation Gradients

These gradients show how the XYZ color 57.6840, 57.1440, 63.8667 changes by changing the brightness by 10 percent. The first figure shows a shift by +10% for each color and the second figure -10%.

Similar to the brightness gradients but the following saturation gradients show a change of the XYZ color 57.6840, 57.1440, 63.8667 by changing the saturation by 10% instead.

■ 57.6840, 57.1440,
63.8667

■ 57.6840, 57.1440,
63.8667

405.9803,
413.9887, 456.9024

■ 41.7969, 41.1209,
46.0972

■ 100.5882,
100.6753, 112.0166

■ 29.1327, 28.4135,
31.9733

128.3360,
128.9522, 143.2340

■ 19.3260, 18.6376,
21.0765

160.7681,
162.0825, 179.7712

■ 12.0115, 11.4087,
12.9881

198.2498,
200.4506, 222.0467

■ 6.8238, 6.3425,
7.2897

241.1465,
244.4409, 270.4790

■ 3.3975, 3.0544,
3.5628

289.8236,

■ 1.3673, 1.1602,

294.4377, 325.4867

1.3887

344.6464,
350.8255, 387.4883

■ 0.2327, 0.0288,
0.1329

■ 0.0000, 0.0000,
0.0000

■ 57.6840, 57.1440,
63.8667

■ 57.6840, 57.1440,
63.8667

■ 51.8024, 47.7132,
54.7138

■ 64.3813, 68.0021,
73.9172

■ 46.6993, 39.6427,
46.4291

■ 71.9198, 80.3361,
84.8864

■ 42.3420, 32.8711,
38.9865

■ 79.2987, 92.1390,
96.4556

■ 38.6932, 27.3294,
32.3572

■ 81.2807, 92.9318,
106.8925

■ 35.7126, 22.9423,
26.5108

■ 81.5419, 93.0363,
108.2678

■ 33.3553, 19.6260,
21.4143

■ 31.5706, 17.2851,
17.0320

■ 30.2991, 15.8072,
13.3242

■ 29.4438, 15.0054,
10.2374

Harmonies

Analogous

The Analogous color harmony consists of three colors that are next to each other on the color wheel.



56.9300, 57.1440, 68.5678



57.6840, 57.1440, 63.8667



57.5202, 57.1440, 58.9626

Triad

The Triadic color harmony groups three colors that are evenly spaced from another and form a triangle on the color wheel.



57.6840, 57.1440, 63.8667



53.1640, 57.1440, 53.6397



52.1967, 57.1440, 69.8913

Complementary

The Complementary color scheme is a pair of colors which are on the opposite of each other on the color wheel.



57.6840, 57.1440, 63.8667



57.4375, 64.0202, 67.7255

Split Complementary

Split-complementary colors differ from the complementary color scheme. The scheme consists of three colors, the original color and two neighbors of the complement color.



51.2286, 57.1440, 65.5954



57.6840, 57.1440, 63.8667



51.7787, 57.1440, 56.2768

Square

The Square scheme is like the rectangle color scheme, but the four colors are evenly spaced on the color wheel.



57.6840, 57.1440, 63.8667



54.8856, 57.1440, 53.2320



51.0772, 57.1440, 60.6021



53.7457, 57.1440, 72.1669

Rectangle

The Rectangle color scheme consists of four colors that form a rectangle on the color wheel.



57.6840, 57.1440, 63.8667



56.9138, 57.1440, 56.2265



51.0772, 57.1440, 60.6021



51.7940, 57.1440, 68.6252

Sweetspot

The Sweet Spot groups the original color and five complimentary colors.



57.6856, 57.1465, 63.8679



91.9275, 94.9236, 104.2562



56.8850, 56.5632, 71.5387



19.5018, 20.0344, 22.0540



0.0000, 0.0000, 0.0000



20.3446, 21.4041, 23.3091

Same Dimension

The Same Dimension uses a secret algorithm to generate beautiful new colors.



57.6856, 57.1465, 63.8679



84.1526, 82.3537, 92.4780



57.2111, 57.6736, 59.1587



12.6269, 12.5023, 13.9757



17.8151, 9.0624, 6.3306



1.1148, 0.5627, 0.5940

Inverse Universe

The Inverse Universe completely reimagines the original color for something new.



57.6856, 57.1465, 63.8679



84.1526, 82.3537, 92.4780



57.9310, 63.4128, 72.8057



12.6269, 12.5023, 13.9757



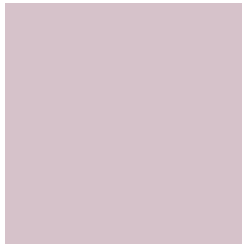
17.8151, 9.0624, 6.3306



1.1148, 0.5627, 0.5940

Previews

White Background



This preview shows how the XYZ color 57.6840, 57.1440, 63.8667 looks on a white background.

Color Contrast Check

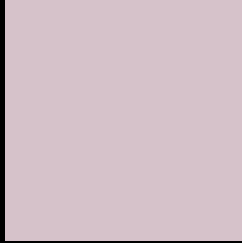
Large Text (above 18pt) WCAG AA × Fail

Any Text WCAG AA × Fail

Large Text (above 18pt) WCAG AAA × Fail

Any Text WCAG AAA × Fail

Black Background



This preview shows how the XYZ color 57.6840, 57.1440, 63.8667 looks on a black background.

Color Contrast Check

Large Text (above 18pt) WCAG AA ✓ Pass

Any Text WCAG AA ✓ Pass

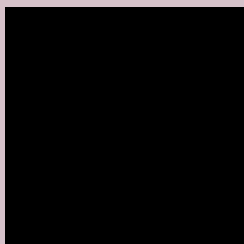
Large Text (above 18pt) WCAG AAA ✓ Pass

Any Text WCAG AAA ✓ Pass

If you want to check with other color combinations, try the [Color Contrast Checker](#).

XYZ 57.6840, 57.1440, 63.8667

Background



This preview shows how black text looks on a background with the XYZ color 57.6840, 57.1440, 63.8667.



This preview shows how white text looks on a background with the XYZ color 57.6840, 57.1440,

Color Blindness Simulation

Color vision deficiency is a very complex topic, and I could not describe the different causes any better than Wikipedia does, so if you want to learn more, you should check out their [article about color blindness](#).

Dichromacy



Original Color

57.6840, 57.1440, 63.8667

Protanopia

55.1806, 57.1653, 65.2524

Deuteranopia

58.3459, 57.1559, 63.8341



Tritanopia

58.4795, 57.1411, 67.6216

Trichromacy



Original Color

57.6840, 57.1440, 63.8667

Protanomaly

56.1993, 57.3661, 64.6107

Deuteranomaly

58.0495, 57.0031, 63.8203

Tritanomaly

58.2349, 57.0432, 66.3337

Monochromacy



Original Color

57.6840, 57.1440, 63.8667

Achromatopsia

55.5167, 58.4078, 63.6061

Achromatomaly

56.1903, 57.7270, 63.4392

CSS Examples

Text

The CSS property to change the color of the text to XYZ 57.6840, 57.1440, 63.8667 is called "color". The color property can be set on classes, ids or directly on the HTML element.

This example shows how text in the color rgb(214, 194, 202) looks like.

```
.text, #text, p{  
    color:rgb(214, 194, 202)  
}
```

If you want to add a text shadow in that color use the text-shadow property, you can generate a text shadow directly with our [CSS Text Shadow Generator](#).

Here you see how black text with a 4 pixel rgb(214, 194, 202) colored shadow looks like.

```
.shadow{ text-shadow: 4px 4px 2px rgb(214, 194, 202) }
```

Border

The CSS property to change the border of an element to XYZ 57.6840, 57.1440, 63.8667 is called "border". The border property can be set on classes, ids or directly on the HTML element.

This example shows the color as border, it can be applied via the CSS property "border" or "border-color".

```
.border, #border, table{ border:4px solid rgb(214, 194, 202) }
```


If only the border color should be changed use the property `border-color`.

```
.border{ border-color:rgb(214, 194, 202) }
```

If you want to add a box shadow in that color use:

Here you see how a box with a 4 pixel `rgb(214, 194, 202)` colored shadow looks like.

```
.boxshadow{ -moz-box-shadow:4px 4px 4px  
4px rgb(214, 194, 202); -webkit-box-  
shadow:4px 4px 4px 4px rgb(214, 194, 202);  
box-shadow:4px 4px 4px 4px rgb(214, 194,  
202) }
```

Background

The CSS property to change the background color of an element to XYZ 57.6840, 57.1440, 63.8667 is called "background". The background property can be set on classes, ids or directly on the HTML element.

```
.background, #background, body{  
background: rgb(214, 194, 202) }
```

If only the background color should be changed can be used:

```
.background{ background-color: rgb(214,  
194, 202) }
```

This example shows the color as background, it is applied via the CSS property "background".

To optimize and compress your CSS code, you can use our [online CSS compressor and optimizer](#) based on csstidy. If you want to create a linear or radial gradient as background or border, check our [CSS Gradient Generator](#).

Hey! You found this booklet interesting? Support Converting Colors with the new Membership Option!

The pro membership hides all ads, plus gives you double the colors in the color bucket, and more awesome pro features!

[Learn more, Memberships starting at \\$2.50/m!](#)

**Follow me
on Twitter!**

@ConvertingColor