

# Converting Colors

XYZ(57.6236, 41.0348, 35.5305)

Have a look what the booklet for  
XYZ(57.6236, 41.0348, 35.5305)  
contains.

<b>XYZ(55.1890, 39.8257, 35.3502)</b> .....	3
<b><i>Conversions</i></b> .....	4
<b><i>Details</i></b> .....	6
<b><i>Harmonies</i></b> .....	12
<b><i>Previews</i></b> .....	24
<b><i>Color Blindness Simulation</i></b> .....	28
<b><i>CSS Examples</i></b> .....	31

# Color

**XYZ(55.1890, 39.8257,  
35.3502)**

# Conversions

## Conversions Part 1

Format	Color
Hex	FF839A
RGB	255, 131, 154
RGB Percent	100%, 51%, 60%
CMY	0.0000, 0.4862, 0.3961
CMYK	0.00, 0.49, 0.40, 0.00
HSL	349°, 100%, 76%
HSV	349°, 49%, 100%
XYZ	55.1890, 39.8257, 35.3502
YIQ	170.6980, 66.5210, 33.4410

# Conversions

## Conversions Part 2

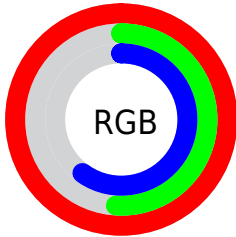
<b>Format</b>	<b>Color</b>
R <sub>Y</sub> B	255, 131, 154
Decimal	16745370
CIE Lab	69.35, 49.27, 9.69
CIE LCh	69, 50.209, 11.125
Yxy	39.8257, 0.4233, 0.3055
Android (android.graphics.Color)	4294935450 (0xFFFF839A)
YUV	170.6980, -8.2321, 73.9329
Hunter-Lab	63.1076, 45.6639, 10.9636

# Details

The XYZ color **55.1890, 39.8257, 35.3502** is a light color, and the websafe version is hex **FF9999**. A complement of this color would be **59.6876, 82.1723, 89.0637**, and the grayscale version is **38.5750, 40.5839, 44.1959**.

A 20% lighter version of the original color is **70.3955, 61.3547, 67.8069**, and **27.6077, 17.8891, 14.8298** is the 20% darker color. If you saturate the color by 10%, you get **50.5929, 33.1666, 26.0089**, and if you desaturate by 10%, it is **60.9292, 48.2938, 46.5505**.

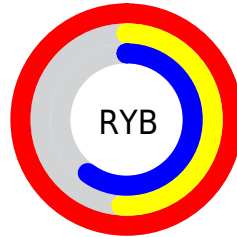
# Distribution



Red (100%)

Green (51%)

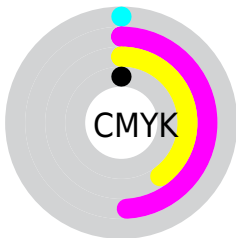
Blue (60%)



Red (100%)

Yellow (51%)

Blue (60%)

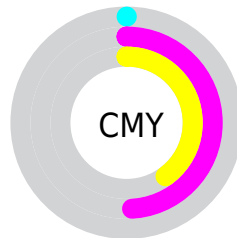


Cyan (0%)

Magenta (49%)

Yellow (40%)

Black (0%)



Cyan (0%)

Magenta (49%)

Yellow (40%)

# Brightness & Saturation Gradients

These gradients show how the XYZ color 55.1890, 39.8257, 35.3502 changes by changing the brightness by 10 percent. The first figure shows a shift by +10% for each color and the second figure -10%.

Similar to the brightness gradients but the following saturation gradients show a change of the XYZ color 55.1890, 39.8257, 35.3502 by changing the saturation by 10% instead.



55.1890, 39.8257,  
35.3502

55.1890, 39.8257,  
35.3502

396.7527,  
345.3884, 341.0625

39.7875, 27.4027,  
23.6471

96.9645, 74.8980,  
69.1856

27.5564, 17.8759,  
14.8622

124.0693, 98.3161,  
92.1550

18.1303, 10.8609,  
8.5772

155.8058,  
126.1680, 119.7169

11.1438, 5.9734,  
4.3734

192.5395,  
158.8381, 152.2898

6.2316, 2.8289,  
1.8324

234.6356,  
196.7108, 190.2923

3.0284, 1.0431,  
0.4492

282.4597,

1.1688, 0.0000,

240.1705, 234.1428

0.0000

336.3769,  
289.6015, 284.2601

■ 0.0815, 0.0000,  
0.0000

■ 0.0000, 0.0000,  
0.0000

■ 55.1890, 39.8257,  
35.3502

■ 55.1890, 39.8257,  
35.3502

■ 50.5929, 33.1666,  
26.0089

■ 60.9292, 48.2938,  
46.5505

■ 47.0594, 28.1785,  
18.4221

■ 67.8813, 58.6837,  
59.7018

■ 44.5010, 24.7130,  
12.4783

■ 76.1113, 71.1061,  
74.8925

■ 42.8141, 22.5929,  
8.0514

■ 85.6796, 85.6615,  
92.2050

■ 41.8568, 21.5676, 95.0499, 100.0000,  
4.9909 108.9000

■ 41.7588, 21.4675,  
4.6625

# Harmonies

## Analogous

The Analogous color harmony consists of three colors that are next to each other on the color wheel.



54.4947, 39.8257, 59.3673



55.1890, 39.8257, 35.3502



50.7701, 39.8257, 20.2303

# Triad

The Triadic color harmony groups three colors that are evenly spaced from another and form a triangle on the color wheel.



55.1890, 39.8257, 35.3502



28.5468, 39.8257, 17.7841



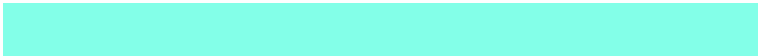
33.0571, 39.8257, 100.3865

# Complementary

The Complementary color scheme is a pair of colors which are on the opposite of each other on the color wheel.



55.1890, 39.8257, 35.3502



59.6876, 82.1723, 89.0637

# Split Complementary

Split-complementary colors differ from the complementary color scheme. The scheme consists of three colors, the original color and two neighbors of the complement color.



27.3370, 39.8257, 79.6003



55.1890, 39.8257, 35.3502



24.9997, 39.8257, 30.5300

# Square

The Square scheme is like the rectangle color scheme, but the four colors are evenly spaced on the color wheel.



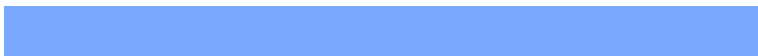
55.1890, 39.8257, 35.3502



34.9406, 39.8257, 12.7634



24.5907, 39.8257, 52.5044



40.9231, 39.8257, 103.1287



# Rectangle

The Rectangle color scheme consists of four colors that form a rectangle on the color wheel.



55.1890, 39.8257, 35.3502



45.8421, 39.8257, 14.9505



24.5907, 39.8257, 52.5044



30.8509, 39.8257, 95.0051

# Sweetspot

The Sweet Spot groups the original color and five complimentary colors.



55.1901, 39.8277, 35.3509



79.4217, 76.1302, 80.9181



58.8651, 40.3110, 99.2858



16.5828, 15.6622, 16.5624



0.0000, 0.0000, 0.0000



20.3446, 21.4041, 23.3091



# Same Dimension

The Same Dimension uses a secret algorithm to generate beautiful new colors.



55.1901, 39.8277, 35.3509



50.8480, 33.5322, 26.5398



59.3777, 50.9800, 28.1860



18.1469, 18.0421, 19.3909



21.8591, 11.2329, 2.6427



2.1634, 1.1077, 0.4419



# Inverse Universe

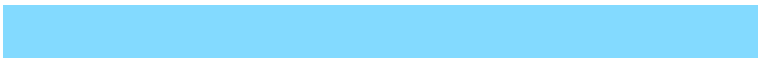
The Inverse Universe completely reimagines the original color for something new.



55.1901, 39.8277, 35.3509



50.8480, 33.5322, 26.5398



52.4313, 62.0861, 103.8279



18.1469, 18.0421, 19.3909



21.8591, 11.2329, 2.6427



2.1634, 1.1077, 0.4419



# Previews

## White Background



This preview shows how the XYZ color 55.1890, 39.8257, 35.3502 looks on a white background.

## Color Contrast Check

Large Text (above 18pt) WCAG AA × Fail

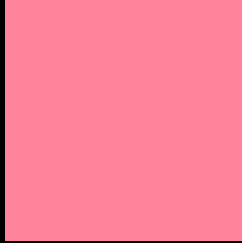
Any Text WCAG AA × Fail

Large Text (above 18pt) WCAG AAA × Fail

Any Text WCAG AAA × Fail



# Black Background



This preview shows how the XYZ color 55.1890, 39.8257, 35.3502 looks on a black background.

## Color Contrast Check

Large Text (above 18pt) WCAG AA ✓ Pass

Any Text WCAG AA ✓ Pass

Large Text (above 18pt) WCAG AAA ✓ Pass

Any Text WCAG AAA ✓ Pass

If you want to check with other color combinations, try the [Color Contrast Checker](#).

**XYZ 55.1890, 39.8257, 35.3502**

## **Background**



This preview shows how black text looks on a background with the XYZ color 55.1890, 39.8257, 35.3502.



This preview shows how white text looks on a background with the XYZ color 55.1890, 39.8257,



# Color Blindness Simulation

Color vision deficiency is a very complex topic, and I could not describe the different causes any better than Wikipedia does, so if you want to learn more, you should check out their [article about color blindness](#).

## Dichromacy



### Original Color

55.1890, 39.8257, 35.3502

### Protanopia

38.7204, 40.1290, 46.2623

### Deuteranopia

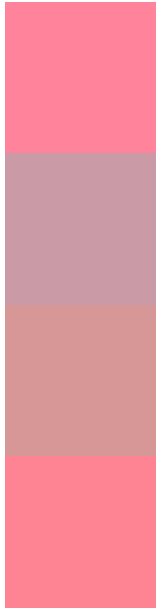
40.7701, 39.8336, 33.9736



## Tritanopia

54.2185, 39.8291, 30.8167

# Trichromacy



## Original Color

55.1890, 39.8257, 35.3502

## Protanomaly

43.0535, 38.7893, 41.7771

## Deuteranomaly

44.9714, 38.9665, 34.4292

## Tritanomaly

54.3908, 39.6799, 32.3960

# Monochromacy



## Original Color

55.1890, 39.8257, 35.3502

## Achromatopsia

38.7082, 40.7240, 44.3485

## Achromatomaly

43.0371, 39.0501, 40.8664

# CSS Examples

## Text

The CSS property to change the color of the text to XYZ 55.1890, 39.8257, 35.3502 is called "color". The color property can be set on classes, ids or directly on the HTML element.

This example shows how text in the color `rgb(255, 131, 154)` looks like.

```
.text, #text, p{  
    color:rgb(255, 131, 154)  
}
```

If you want to add a text shadow in that color use the text-shadow property, you can generate a text shadow directly with our [CSS Text Shadow Generator](#).

Here you see how black text with a 4 pixel rgb(255, 131, 154) colored shadow looks like.

```
.shadow{ text-shadow: 4px 4px 2px rgb(255, 131, 154) }
```

## Border

The CSS property to change the border of an element to XYZ 55.1890, 39.8257, 35.3502 is called "border". The border property can be set on classes, ids or directly on the HTML element.

This example shows the color as border, it can be applied via the CSS property "border" or "border-color".

```
.border, #border, table{ border:4px solid rgb(255, 131, 154) }
```



If only the border color should be changed use the property `border-color`.

```
.border{ border-color:rgb(255, 131, 154) }
```

If you want to add a box shadow in that color use:

Here you see how a box with a 4 pixel `rgb(255, 131, 154)` colored shadow looks like.

```
.boxshadow{ -moz-box-shadow:4px 4px 4px 4px rgb(255, 131, 154); -webkit-box-shadow:4px 4px 4px 4px rgb(255, 131, 154); box-shadow:4px 4px 4px 4px rgb(255, 131, 154) }
```

# Background

The CSS property to change the background color of an element to XYZ 55.1890, 39.8257, 35.3502 is called "background". The background property can be set on classes, ids or directly on the HTML element.

```
.background, #background, body{  
background: rgb(255, 131, 154) }
```

If only the background color should be changed can be used:

```
.background{ background-color: rgb(255,  
131, 154) }
```

This example shows the color as background, it is applied via the CSS property "background".

To optimize and compress your CSS code, you can use our [online CSS compressor and optimizer](#) based on csstidy. If you want to create a linear or radial gradient as background or border, check our [CSS Gradient Generator](#).

Hey! You found this booklet interesting? Support Converting Colors with the new Membership Option!

The pro membership hides all ads, plus gives you double the colors in the color bucket, and more awesome pro features!

**[Learn more, Memberships starting at \\$2.50/m!](#)**

**Follow me  
on Twitter!**

@ConvertingColor