

Converting Colors

XYZ(57.6814, 52.7736, 61.1790)

Have a look what the booklet for
XYZ(57.6814, 52.7736, 61.1790)
contains.

| | |
|--|----|
| XYZ(57.6814, 52.7736, 61.1790) | 3 |
| <i>Conversions</i> | 4 |
| <i>Details</i> | 6 |
| <i>Harmonies</i> | 12 |
| <i>Previews</i> | 24 |
| <i>Color Blindness Simulation</i> | 28 |
| <i>CSS Examples</i> | 31 |

Color

**XYZ(57.6814, 52.7736,
61.1790)**

Conversions

Conversions Part 1

| Format | Color |
|---------------|----------------------------|
| Hex | E1B4C7 |
| RGB | 225, 180, 199 |
| RGB Percent | 88%, 71%, 78% |
| CMY | 0.1176, 0.2941, 0.2196 |
| CMYK | 0.00, 0.20, 0.12, 0.12 |
| HSL | 335°, 43%, 79% |
| HSV | 335°, 20%, 88% |
| XYZ | 57.6814, 52.7736, 61.1790 |
| YIQ | 195.6210, 20.7210, 15.4490 |

Conversions

Conversions Part 2

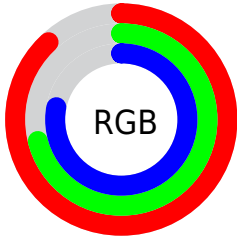
| Format | Color |
|-------------------------------------|------------------------------|
| R _Y B | 225, 180, 199 |
| Decimal | 14791879 |
| CIE Lab | 77.74, 19.26, -3.41 |
| CIE LCh | 78, 19.564, 349.953 |
| Yxy | 52.7736, 0.3361, 0.3075 |
| Android (android.graphics.Color) | 4292981959 (0xFFE1B4C7) |
| YUV | 195.6210, 1.6658, 25.7654 |
| Hunter-Lab | 72.6454, 14.6017, 0.9202 |

Details

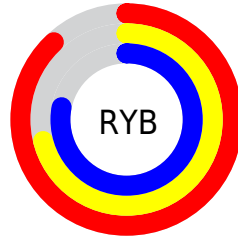
The XYZ color **57.6814, 52.7736, 61.1790** is a light color, and the websafe version is hex **FFCCCC**. A complement of this color would be **56.8903, 68.0113, 68.5248**, and the grayscale version is **52.2253, 54.9451, 59.8352**.

A 20% lighter version of the original color is **89.2855, 88.4709, 106.9785**, and **29.0624, 25.6581, 30.2088** is the 20% darker color. If you saturate the color by 10%, you get **52.0572, 43.8381, 52.1723**, and if you desaturate by 10%, it is **64.1749, 63.2399, 71.1131**.

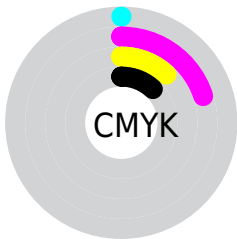
Distribution



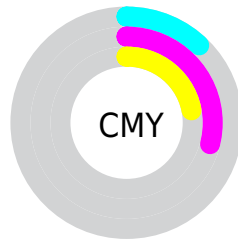
- Red (88%)
- Green (71%)
- Blue (78%)



- Red (88%)
- Yellow (71%)
- Blue (78%)



- Cyan (0%)
- Magenta (20%)
- Yellow (12%)
- Black (12%)



- Cyan (12%)
- Magenta (29%)
- Yellow (22%)

Brightness & Saturation Gradients

These gradients show how the XYZ color 57.6814, 52.7736, 61.1790 changes by changing the brightness by 10 percent. The first figure shows a shift by +10% for each color and the second figure -10%.

Similar to the brightness gradients but the following saturation gradients show a change of the XYZ color 57.6814, 52.7736, 61.1790 by changing the saturation by 10% instead.

57.6814, 52.7736,
61.1790

57.6814, 52.7736,
61.1790

405.9707,
397.4159, 446.8547

41.7948, 37.6221,
43.9381

100.5844, 94.2711,
108.0981

29.1311, 25.6895,
30.2850

128.3315,
121.3859, 138.6135

19.3248, 16.5915,
19.8012

160.7629,
153.2573, 174.3907

12.0106, 9.9437,
12.0680

198.2439,
190.2695, 215.8485

6.8231, 5.3616,
6.6669

241.1398,
232.8072, 263.4052

3.3971, 2.4610,
3.1794

289.8160,

1.3671, 0.8570,

281.2545, 317.4794

1.1869

344.6379,
335.9959, 378.4898

■ 0.2326, 0.0000,
0.0000

■ 0.0000, 0.0000,
0.0000

■ 57.6814, 52.7736,
61.1790

■ 57.6814, 52.7736,
61.1790

■ 52.0572, 43.8381,
52.1723

■ 64.1749, 63.2399,
71.1131

■ 47.2590, 36.3542,
44.0608

■ 71.5694, 75.2976,
81.9985

■ 43.2466, 30.2458,
36.8153

■ 79.9006, 89.0123,
93.8625

■ 39.9744, 25.4273,
30.4033

■ 84.2252, 94.4931,
105.0716

■ 37.3917, 21.8034,
24.7902

■ 84.8616, 94.7477,
108.4232

■ 35.4410, 19.2652,
19.9378

■ 34.0547, 17.6836,
15.8037

■ 33.1168, 16.8339,
12.3283

■ 33.1167, 16.8337,
12.3276

Harmonies

Analogous

The Analogous color harmony consists of three colors that are next to each other on the color wheel.



55.9465, 52.7736, 71.9599



57.6814, 52.7736, 61.1790



57.3247, 52.7736, 50.6308

Triad

The Triadic color harmony groups three colors that are evenly spaced from another and form a triangle on the color wheel.



57.6814, 52.7736, 61.1790



47.7142, 52.7736, 39.9947



45.6164, 52.7736, 74.9610

Complementary

The Complementary color scheme is a pair of colors which are on the opposite of each other on the color wheel.



57.6814, 52.7736, 61.1790



56.8903, 68.0113, 68.5248

Split Complementary

Split-complementary colors differ from the complementary color scheme. The scheme consists of three colors, the original color and two neighbors of the complement color.



43.6181, 52.7736, 64.8804



57.6814, 52.7736, 61.1790



44.7864, 52.7736, 45.0543

Square

The Square scheme is like the rectangle color scheme, but the four colors are evenly spaced on the color wheel.



57.6814, 52.7736, 61.1790



51.4415, 52.7736, 39.2667



43.3221, 52.7736, 53.8977



48.8994, 52.7736, 80.5541

Rectangle

The Rectangle color scheme consists of four colors that form a rectangle on the color wheel.



57.6814, 52.7736, 61.1790



55.9547, 52.7736, 45.0764



43.3221, 52.7736, 53.8977



44.7793, 52.7736, 71.9297

Sweetspot

The Sweet Spot groups the original color and five complimentary colors.



57.6829, 52.7760, 61.1801



88.9708, 90.0673, 100.0124



55.2289, 51.1317, 78.1934



18.9076, 19.0569, 21.2057



0.0000, 0.0000, 0.0000



20.3446, 21.4041, 23.3091

Same Dimension

The Same Dimension uses a secret algorithm to generate beautiful new colors.



57.6829, 52.7760, 61.1801



73.3575, 64.9027, 76.1194



56.2249, 53.1723, 50.4828



13.9461, 13.7961, 15.4864



19.1387, 9.7225, 7.3962



1.3706, 0.6915, 0.7445

Inverse Universe

The Inverse Universe completely reimagines the original color for something new.



57.6829, 52.7760, 61.1801



73.3575, 64.9027, 76.1194



58.5360, 67.3834, 81.1560



13.9461, 13.7961, 15.4864



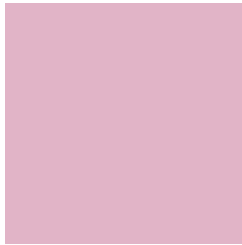
19.1387, 9.7225, 7.3962



1.3706, 0.6915, 0.7445

Previews

White Background



This preview shows how the XYZ color 57.6814, 52.7736, 61.1790 looks on a white background.

Color Contrast Check

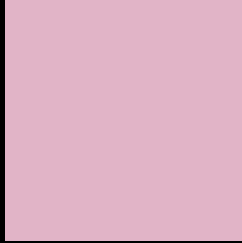
Large Text (above 18pt) WCAG AA × Fail

Any Text WCAG AA × Fail

Large Text (above 18pt) WCAG AAA × Fail

Any Text WCAG AAA × Fail

Black Background



This preview shows how the XYZ color 57.6814, 52.7736, 61.1790 looks on a black background.

Color Contrast Check

Large Text (above 18pt) WCAG AA ✓ Pass

Any Text WCAG AA ✓ Pass

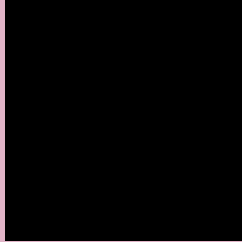
Large Text (above 18pt) WCAG AAA ✓ Pass

Any Text WCAG AAA ✓ Pass

If you want to check with other color combinations, try the [Color Contrast Checker](#).

XYZ 57.6814, 52.7736, 61.1790

Background



This preview shows how black text looks on a background with the XYZ color 57.6814, 52.7736, 61.1790.



This preview shows how white text looks on a background with the XYZ color 57.6814, 52.7736,

Color Blindness Simulation

Color vision deficiency is a very complex topic, and I could not describe the different causes any better than Wikipedia does, so if you want to learn more, you should check out their [article about color blindness](#).

Dichromacy



Original Color

57.6814, 52.7736, 61.1790

Protanopia

51.5096, 52.9243, 65.8931

Deuteranopia

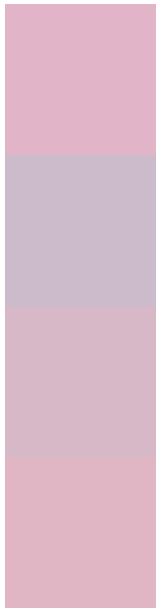
54.0464, 52.7503, 60.7594



Tritanopia

57.1147, 52.8352, 58.8177

Trichromacy



Original Color

57.6814, 52.7736, 61.1790

Protanomaly

53.4517, 52.6898, 63.8529

Deuteranomaly

55.3579, 52.8053, 60.7008

Tritanomaly

57.2281, 52.8806, 59.4153

Monochromacy



Original Color

57.6814, 52.7736, 61.1790

Achromatopsia

52.4687, 55.2011, 60.1140

Achromatomaly

54.2236, 54.1235, 60.4123

CSS Examples

Text

The CSS property to change the color of the text to XYZ 57.6814, 52.7736, 61.1790 is called "color". The color property can be set on classes, ids or directly on the HTML element.

This example shows how text in the color `rgb(225, 180, 199)` looks like.

```
.text, #text, p{  
    color:rgb(225, 180, 199)  
}
```

If you want to add a text shadow in that color use the text-shadow property, you can generate a text shadow directly with our [CSS Text Shadow Generator](#).

Here you see how black text with a 4 pixel rgb(225, 180, 199) colored shadow looks like.

```
.shadow{ text-shadow: 4px 4px 2px rgb(225, 180, 199) }
```

Border

The CSS property to change the border of an element to XYZ 57.6814, 52.7736, 61.1790 is called "border". The border property can be set on classes, ids or directly on the HTML element.

This example shows the color as border, it can be applied via the CSS property "border" or "border-color".

```
.border, #border, table{ border:4px solid rgb(225, 180, 199) }
```


If only the border color should be changed use the property `border-color`.

```
.border{ border-color:rgb(225, 180, 199) }
```

If you want to add a box shadow in that color use:

Here you see how a box with a 4 pixel `rgb(225, 180, 199)` colored shadow looks like.

```
.boxshadow{ -moz-box-shadow:4px 4px 4px  
4px rgb(225, 180, 199); -webkit-box-  
shadow:4px 4px 4px 4px rgb(225, 180, 199);  
box-shadow:4px 4px 4px 4px rgb(225, 180,  
199) }
```

Background

The CSS property to change the background color of an element to XYZ 57.6814, 52.7736, 61.1790 is called "background". The background property can be set on classes, ids or directly on the HTML element.

```
.background, #background, body{  
background: rgb(225, 180, 199) }
```

If only the background color should be changed can be used:

```
.background{ background-color: rgb(225,  
180, 199) }
```

This example shows the color as background, it is applied via the CSS property "background".

To optimize and compress your CSS code, you can use our [online CSS compressor and optimizer](#) based on csstidy. If you want to create a linear or radial gradient as background or border, check our [CSS Gradient Generator](#).

Hey! You found this booklet interesting? Support Converting Colors with the new Membership Option!

The pro membership hides all ads, plus gives you double the colors in the color bucket, and more awesome pro features!

[Learn more, Memberships starting at \\$2.50/m!](#)

**Follow me
on Twitter!**

@ConvertingColor