

Converting Colors

XYZ(57.7325, 57.5545, 61.4924)

Have a look what the booklet for XYZ(57.7325, 57.5545, 61.4924) contains.

XYZ(57.7325, 57.5545, 61.4924)	3
<i>Conversions</i>	4
<i>Details</i>	6
<i>Harmonies</i>	12
<i>Previews</i>	24
<i>Color Blindness Simulation</i>	28
<i>CSS Examples</i>	31

Color

**XYZ(57.7325, 57.5545,
61.4924)**

Conversions

Conversions Part 1

Format	Color
Hex	D7C3C6
RGB	215, 195, 198
RGB Percent	84%, 76%, 78%
CMY	0.1569, 0.2353, 0.2235
CMYK	0.00, 0.09, 0.08, 0.16
HSL	351°, 20%, 80%
HSV	351°, 9%, 84%
XYZ	57.7325, 57.5545, 61.4924
YIQ	201.3220, 10.9570, 5.1730

Conversions

Conversions Part 2

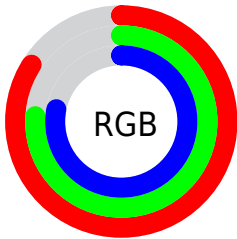
Format	Color
RYB	215, 195, 198
Decimal	14140358
CIELab	80.49, 7.54, 1.05
CIELCh	80, 7.610, 7.900
Yxy	57.5545, 0.3266, 0.3256
Android (android.graphics.Color)	4292330438 (0xFFD7C3C6)
YUV	201.3220, -1.6377, 11.9956
Hunter-Lab	75.8647, 3.0741, 5.0475

Details

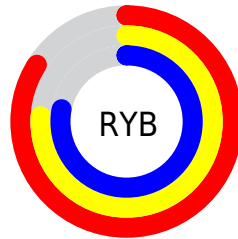
The XYZ color **57.7325, 57.5545, 61.4924** is a light color, and the websafe version is hex **CCCCCC**. A complement of this color would be **58.6920, 64.9579, 71.7353**, and the grayscale version is **55.7235, 58.6255, 63.8432**.

A 20% lighter version of the original color is **94.1004, 98.1008, 108.5835**, and **29.0561, 28.5370, 30.3623** is the 20% darker color. If you saturate the color by 10%, you get **51.2753, 47.8124, 49.5584**, and if you desaturate by 10%, it is **65.1411, 68.7906, 75.0002**.

Distribution



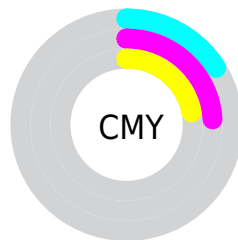
- Red (84%)
- Green (76%)
- Blue (78%)



- Red (84%)
- Yellow (76%)
- Blue (78%)



- Cyan (0%)
- Magenta (9%)
- Yellow (8%)
- Black (16%)



- Cyan (16%)
- Magenta (24%)
- Yellow (22%)

Brightness & Saturation Gradients

These gradients show how the XYZ color 57.7325, 57.5545, 61.4924 changes by changing the brightness by 10 percent. The first figure shows a shift by +10% for each color and the second figure -10%.

Similar to the brightness gradients but the following saturation gradients show a change of the XYZ color 57.7325, 57.5545, 61.4924 by changing the saturation by 10% instead.

■ 57.7325, 57.5545,
61.4924

■ 57.7325, 57.5545,
61.4924

406.1584,
415.5239, 448.0336

■ 41.8361, 41.4506,
44.1895

□ 100.6584,
101.2738, 108.5560

■ 29.1635, 28.6713,
30.4813

128.4186,
129.6580, 139.1539

■ 19.3494, 18.8323,
19.9490

160.8641,
162.9045, 175.0205

■ 12.0285, 11.5492,
12.1743

198.3602,
201.3975, 216.5744

■ 6.8355, 6.4375,
6.7385

241.2724,
245.5216, 264.2341

■ 3.4048, 3.1129,
3.2231

289.9659,

■ 1.3713, 1.1910,

295.6611, 318.4182

1.2097

344.8061,
352.2004, 379.5451

■ 0.2356, 0.0543,
0.0000

■ 0.0000, 0.0000,
0.0000

■ 57.7325, 57.5545,
61.4924

■ 57.7325, 57.5545,
61.4924

■ 51.2753, 47.8124,
49.5584

■ 65.1411, 68.7906,
75.0002

■ 45.7260, 39.4942,
39.1372

■ 73.5324, 81.5721,
90.1325

■ 41.0451, 32.5353,
30.1693

■ 81.4883, 93.0487,
106.4575

■ 37.1883, 26.8633,
22.5895

■ 81.8347, 93.1872,
108.2815

■ 34.1072, 22.3990,
16.3282

■ 31.7483, 19.0543,
11.3090

■ 30.0514, 16.7293,
7.4482

■ 28.9459, 15.3061,
4.6509

■ 28.3225, 14.5925,
2.7994

Harmonies

Analogous

The Analogous color harmony consists of three colors that are next to each other on the color wheel.



57.5336, 57.5545, 65.9586



57.7325, 57.5545, 61.4924



57.1078, 57.5545, 57.5311

Triad

The Triadic color harmony groups three colors that are evenly spaced from another and form a triangle on the color wheel.



57.7325, 57.5545, 61.4924



52.8798, 57.5545, 56.1228



53.5818, 57.5545, 70.9779

Complementary

The Complementary color scheme is a pair of colors which are on the opposite of each other on the color wheel.



57.7325, 57.5545, 61.4924



58.6920, 64.9579, 71.7353

Split Complementary

Split-complementary colors differ from the complementary color scheme. The scheme consists of three colors, the original color and two neighbors of the complement color.



52.3683, 57.5545, 68.0999



57.7325, 57.5545, 61.4924



51.9684, 57.5545, 59.4869

Square

The Square scheme is like the rectangle color scheme, but the four colors are evenly spaced on the color wheel.



57.7325, 57.5545, 61.4924



54.2921, 57.5545, 54.5287



51.7830, 57.5545, 63.8566



55.1176, 57.5545, 71.5775

Rectangle

The Rectangle color scheme consists of four colors that form a rectangle on the color wheel.



57.7325, 57.5545, 61.4924



56.3151, 57.5545, 55.6603



51.7830, 57.5545, 63.8566



53.1235, 57.5545, 70.2385

Sweetspot

The Sweet Spot groups the original color and five complimentary colors.



57.7341, 57.5570, 61.4936



91.6283, 94.8040, 102.6808



58.9340, 57.9362, 72.3674



19.4213, 20.0022, 21.6300



0.0000, 0.0000, 0.0000



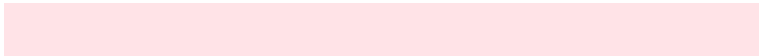
20.3446, 21.4041, 23.3091

Same Dimension

The Same Dimension uses a secret algorithm to generate beautiful new colors.



57.7341, 57.5570, 61.4936



83.1409, 81.9490, 87.1505



58.9970, 60.6304, 60.2262



12.4983, 12.4508, 13.2985



16.9440, 8.7139, 1.7430



1.0466, 0.5354, 0.2347

Inverse Universe

The Inverse Universe completely reimagines the original color for something new.



57.7341, 57.5570, 61.4936



83.1409, 81.9490, 87.1505



57.3294, 61.6221, 73.1634



12.4983, 12.4508, 13.2985



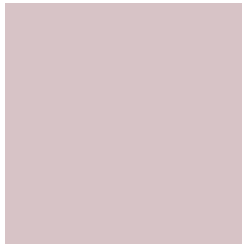
16.9440, 8.7139, 1.7430



1.0466, 0.5354, 0.2347

Previews

White Background



This preview shows how the XYZ color 57.7325, 57.5545, 61.4924 looks on a white background.

Color Contrast Check

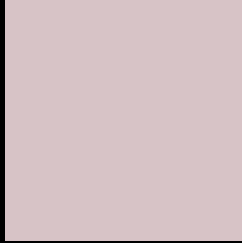
Large Text (above 18pt) WCAG AA × Fail

Any Text WCAG AA × Fail

Large Text (above 18pt) WCAG AAA × Fail

Any Text WCAG AAA × Fail

Black Background



This preview shows how the XYZ color 57.7325, 57.5545, 61.4924 looks on a black background.

Color Contrast Check

Large Text (above 18pt) WCAG AA ✓ Pass

Any Text WCAG AA ✓ Pass

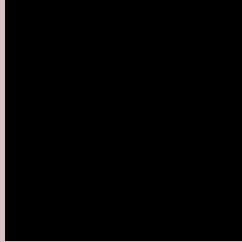
Large Text (above 18pt) WCAG AAA ✓ Pass

Any Text WCAG AAA ✓ Pass

If you want to check with other color combinations, try the [Color Contrast Checker](#).

XYZ 57.7325, 57.5545, 61.4924

Background



This preview shows how black text looks on a background with the XYZ color 57.7325, 57.5545, 61.4924.



This preview shows how white text looks on a background with the XYZ color 57.7325, 57.5545,

61.4924.

Color Blindness Simulation

Color vision deficiency is a very complex topic, and I could not describe the different causes any better than Wikipedia does, so if you want to learn more, you should check out their [article about color blindness](#).

Dichromacy



Original Color

57.7325, 57.5545, 61.4924

Protanopia

55.4774, 57.7135, 62.8594

Deuteranopia

58.4764, 57.2772, 61.3996



Tritanopia

58.8975, 57.3423, 68.2855

Trichromacy



Original Color

57.7325, 57.5545, 61.4924

Protanomaly

56.2350, 57.7771, 62.2210

Deuteranomaly

58.3983, 57.5662, 61.4596

Tritanomaly

58.6301, 57.5903, 65.7835

Monochromacy



Original Color

57.7325, 57.5545, 61.4924

Achromatopsia

55.5167, 58.4078, 63.6061

Achromatomaly

56.3023, 58.1388, 62.8980

CSS Examples

Text

The CSS property to change the color of the text to XYZ 57.7325, 57.5545, 61.4924 is called "color". The color property can be set on classes, ids or directly on the HTML element.

This example shows how text in the color `rgb(215, 195, 198)` looks like.

```
.text, #text, p{  
    color:rgb(215, 195, 198)  
}
```

If you want to add a text shadow in that color use the text-shadow property, you can generate a text shadow directly with our [CSS Text Shadow Generator](#).

Here you see how black text with a 4 pixel rgb(215, 195, 198) colored shadow looks like.

```
.shadow{ text-shadow: 4px 4px 2px rgb(215, 195, 198) }
```

Border

The CSS property to change the border of an element to XYZ 57.7325, 57.5545, 61.4924 is called "border". The border property can be set on classes, ids or directly on the HTML element.

This example shows the color as border, it can be applied via the CSS property "border" or "border-color".

```
.border, #border, table{ border:4px solid rgb(215, 195, 198) }
```


If only the border color should be changed use the property `border-color`.

```
.border{ border-color:rgb(215, 195, 198) }
```

If you want to add a box shadow in that color use:

Here you see how a box with a 4 pixel `rgb(215, 195, 198)` colored shadow looks like.

```
.boxshadow{ -moz-box-shadow:4px 4px 4px  
4px rgb(215, 195, 198); -webkit-box-  
shadow:4px 4px 4px 4px rgb(215, 195, 198);  
box-shadow:4px 4px 4px 4px rgb(215, 195,  
198) }
```

Background

The CSS property to change the background color of an element to XYZ 57.7325, 57.5545, 61.4924 is called "background". The background property can be set on classes, ids or directly on the HTML element.

```
.background, #background, body{  
background: rgb(215, 195, 198) }
```

If only the background color should be changed can be used:

```
.background{ background-color: rgb(215,  
195, 198) }
```

This example shows the color as background, it is applied via the CSS property "background".

To optimize and compress your CSS code, you can use our [online CSS compressor and optimizer](#) based on csstidy. If you want to create a linear or radial gradient as background or border, check our [CSS Gradient Generator](#).

Hey! You found this booklet interesting? Support Converting Colors with the new Membership Option!

The pro membership hides all ads, plus gives you double the colors in the color bucket, and more awesome pro features!

[Learn more, Memberships starting at \\$2.50/m!](#)

**Follow me
on Twitter!**

@ConvertingColor