

# Converting Colors

XYZ(57.7410, 57.1148, 55.4985)

Have a look what the booklet for  
XYZ(57.7410, 57.1148, 55.4985)  
contains.

<b>XYZ(57.6623, 56.9864, 55.5373)</b> .....	3
<b><i>Conversions</i></b> .....	4
<b><i>Details</i></b> .....	6
<b><i>Harmonies</i></b> .....	12
<b><i>Previews</i></b> .....	24
<b><i>Color Blindness Simulation</i></b> .....	28
<b><i>CSS Examples</i></b> .....	31

# Color

**XYZ(57.6623, 56.9864,  
55.5373)**

# Conversions

## Conversions Part 1

Format	Color
Hex	DCC1BC
RGB	220, 193, 188
RGB Percent	86%, 76%, 74%
CMY	0.1373, 0.2431, 0.2627
CMYK	0.00, 0.12, 0.15, 0.14
HSL	9°, 31%, 80%
HSV	9°, 15%, 86%
XYZ	57.6623, 56.9864, 55.5373
YIQ	200.5030, 17.6970, 4.1690

# Conversions

## Conversions Part 2

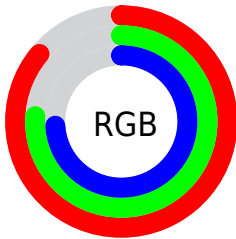
Format	Color
R <sub>Y</sub> B	220, 194, 188
Decimal	14467516
CIE Lab	80.17, 8.74, 6.02
CIE LCh	80, 10.610, 34.541
Yxy	56.9864, 0.3388, 0.3348
Android (android.graphics.Color)	4292657596 (0xFFDCC1BC)
YUV	200.5030, -6.1640, 17.0989
Hunter-Lab	75.4893, 4.2403, 9.2230

# Details

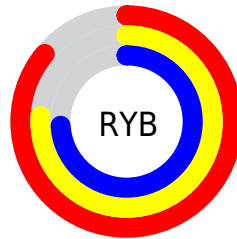
The XYZ color **57.6623, 56.9864, 55.5373** is a light color, and the websafe version is hex **CCCCCC**. A complement of this color would be **57.9575, 64.4583, 77.0978**, and the grayscale version is **55.2404, 58.1172, 63.2896**.

A 20% lighter version of the original color is **91.4448, 95.5430, 99.2099**, and **29.1228, 28.2138, 26.8325** is the 20% darker color. If you saturate the color by 10%, you get **51.6208, 48.4135, 42.7011**, and if you desaturate by 10%, it is **64.5835, 66.7389, 70.4517**.

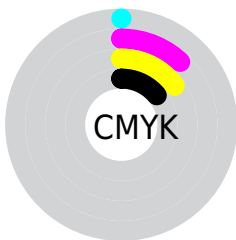
# Distribution



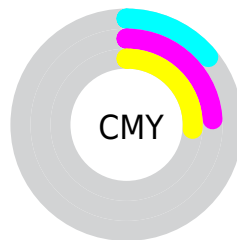
- Red (86%)
- Green (76%)
- Blue (74%)



- Red (86%)
- Yellow (76%)
- Blue (74%)



- Cyan (0%)
- Magenta (12%)
- Yellow (15%)
- Black (14%)



- Cyan (14%)
- Magenta (24%)
- Yellow (26%)

# Brightness & Saturation Gradients

These gradients show how the XYZ color 57.6623, 56.9864, 55.5373 changes by changing the brightness by 10 percent. The first figure shows a shift by +10% for each color and the second figure -10%.


Similar to the brightness gradients but the following saturation gradients show a change of the XYZ color 57.6623, 56.9864, 55.5373 by changing the saturation by 10% instead.

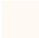



 57.6623, 56.9864,  
55.5373

 57.6623, 56.9864,  
55.5373


405.9006,  
413.3983, 425.2846

 41.7794, 40.9943,  
39.4306


 100.5567,  
100.4453, 99.8068

 29.1190, 28.3146,  
26.7844


128.2990,  
128.6810, 128.8066

 19.3156, 18.5630,  
17.1804


160.7251,  
161.7666, 162.9412

 12.0039, 11.3549,  
10.1999

198.2004,  
200.0866, 202.6291

 6.8185, 6.3061,  
5.4243

241.0902,  
244.0254, 248.2888

 3.3942, 3.0321,  
2.4353

289.7600,

 1.3655, 1.1485,

293.9674, 300.3390

0.8056

344.5750,  
350.2969, 359.1981

■ 0.2314, 0.0190,  
0.0000

■ 0.0000, 0.0000,  
0.0000

■ 57.6623, 56.9864,  
55.5373

■ 57.6623, 56.9864,  
55.5373

■ 51.6208, 48.4135,  
42.7011

■ 64.5835, 66.7389,  
70.4517

■ 46.4189, 40.9680,  
31.8471

■ 72.4128, 77.7053,  
87.5272

■ 42.0204, 34.6050,  
22.8774

■ 81.1835, 89.9284,  
106.8465

■ 38.3848, 29.2739,  
15.6842

■ 83.3255, 93.9558,  
108.3513

■ 35.4676, 24.9197,  
10.1485

■ 33.2200, 21.4826,  
6.1372

■ 31.5865, 18.8958,  
3.4959

■ 30.5023, 17.0831,  
2.0376

■ 30.0991, 16.3830,  
1.5758

# Harmonies

## Analogous

The Analogous color harmony consists of three colors that are next to each other on the color wheel.



58.4163, 56.9864, 61.1103



57.6623, 56.9864, 55.5373



55.9713, 56.9864, 51.9039

# Triad

The Triadic color harmony groups three colors that are evenly spaced from another and form a triangle on the color wheel.



57.6623, 56.9864, 55.5373



50.4950, 56.9864, 57.0681



54.4938, 56.9864, 74.6951

# Complementary

The Complementary color scheme is a pair of colors which are on the opposite of each other on the color wheel.



57.6623, 56.9864, 55.5373



57.9575, 64.4583, 77.0978

# Split Complementary

Split-complementary colors differ from the complementary color scheme. The scheme consists of three colors, the original color and two neighbors of the complement color.



52.3957, 56.9864, 73.4357



57.6623, 56.9864, 55.5373



50.1230, 56.9864, 62.9963

# Square

The Square scheme is like the rectangle color scheme, but the four colors are evenly spaced on the color wheel.



57.6623, 56.9864, 55.5373



51.8399, 56.9864, 52.7455



50.8099, 56.9864, 69.0497



56.5563, 56.9864, 72.3857



# Rectangle

The Rectangle color scheme consists of four colors that form a rectangle on the color wheel.



57.6623, 56.9864, 55.5373



54.5605, 56.9864, 50.9311



50.8099, 56.9864, 69.0497



53.7692, 56.9864, 74.6763

# Sweetspot

The Sweet Spot groups the original color and five complimentary colors.



57.6639, 56.9889, 55.5385



90.7669, 93.9924, 99.5846



59.7906, 56.0995, 72.1025



19.2604, 19.8831, 20.9521



0.0000, 0.0000, 0.0000



20.3446, 21.4041, 23.3091

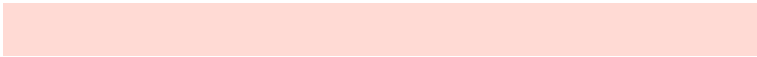


# Same Dimension

The Same Dimension uses a secret algorithm to generate beautiful new colors.



57.6639, 56.9889, 55.5385



78.2623, 76.3613, 72.6705



61.3444, 64.3501, 56.7654



13.2196, 13.3786, 13.6112



17.7167, 9.7191, 0.9422



1.2001, 0.7343, 0.0785

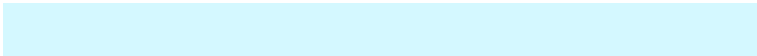


# Inverse Universe

The Inverse Universe completely reimagines the original color for something new.



57.9575, 64.4583, 77.0978



78.7361, 88.4360, 107.5278



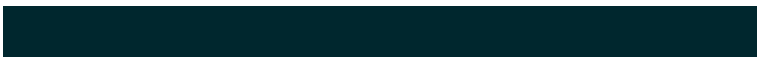
54.1275, 56.7984, 75.8212



13.2624, 14.4646, 16.7451



17.9045, 23.6784, 43.3651

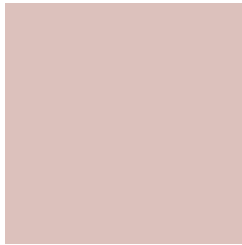


1.2076, 1.6294, 2.8253



# Previews

## White Background



This preview shows how the XYZ color 57.6623, 56.9864, 55.5373 looks on a white background.

## Color Contrast Check

Large Text (above 18pt) WCAG AA × Fail

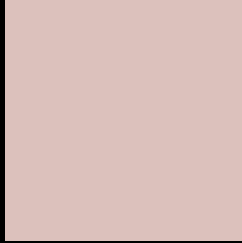
Any Text WCAG AA × Fail

Large Text (above 18pt) WCAG AAA × Fail

Any Text WCAG AAA × Fail



# Black Background



This preview shows how the XYZ color 57.6623, 56.9864, 55.5373 looks on a black background.

## Color Contrast Check

Large Text (above 18pt) WCAG AA ✓ Pass

Any Text WCAG AA ✓ Pass

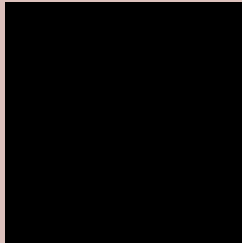
Large Text (above 18pt) WCAG AAA ✓ Pass

Any Text WCAG AAA ✓ Pass

If you want to check with other color combinations, try the [Color Contrast Checker](#).

**XYZ 57.6623, 56.9864, 55.5373**

## **Background**



This preview shows how black text looks on a background with the XYZ color 57.6623, 56.9864, 55.5373.



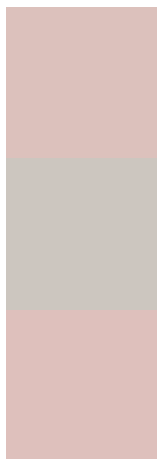
This preview shows how white text looks on a background with the XYZ color 57.6623, 56.9864,



# Color Blindness Simulation

Color vision deficiency is a very complex topic, and I could not describe the different causes any better than Wikipedia does, so if you want to learn more, you should check out their [article about color blindness](#).

## Dichromacy



### Original Color

57.6623, 56.9864, 55.5373

### Protanopia

54.4999, 56.9871, 57.4174

### Deuteranopia

58.0509, 56.8597, 55.4924



## Tritanopia

59.5571, 56.7643, 65.5752

# Trichromacy



## Original Color

57.6623, 56.9864, 55.5373

## Protanomaly

55.6125, 56.8992, 56.7667

## Deuteranomaly

57.7455, 56.7023, 55.4781

## Tritanomaly

58.7584, 56.7573, 61.8912

# Monochromacy



## Original Color

57.6623, 56.9864, 55.5373

## Achromatopsia

55.5167, 58.4078, 63.6061

## Achromatomaly

56.1703, 57.7836, 60.4174

# CSS Examples

## Text

The CSS property to change the color of the text to XYZ 57.6623, 56.9864, 55.5373 is called "color". The color property can be set on classes, ids or directly on the HTML element.

This example shows how text in the color `rgb(220, 193, 188)` looks like.

```
.text, #text, p{  
    color:rgb(220, 193, 188)  
}
```

If you want to add a text shadow in that color use the text-shadow property, you can generate a text shadow directly with our [CSS Text Shadow Generator](#).

Here you see how black text with a 4 pixel rgb(220, 193, 188) colored shadow looks like.

```
.shadow{ text-shadow: 4px 4px 2px rgb(220, 193, 188) }
```

## Border

The CSS property to change the border of an element to XYZ 57.6623, 56.9864, 55.5373 is called "border". The border property can be set on classes, ids or directly on the HTML element.

This example shows the color as border, it can be applied via the CSS property "border" or "border-color".

```
.border, #border, table{ border:4px solid rgb(220, 193, 188) }
```



If only the border color should be changed use the property `border-color`.

```
.border{ border-color:rgb(220, 193, 188) }
```

If you want to add a box shadow in that color use:

Here you see how a box with a 4 pixel `rgb(220, 193, 188)` colored shadow looks like.

```
.boxshadow{ -moz-box-shadow:4px 4px 4px 4px rgb(220, 193, 188); -webkit-box-shadow:4px 4px 4px 4px rgb(220, 193, 188); box-shadow:4px 4px 4px 4px rgb(220, 193, 188) }
```

# Background

The CSS property to change the background color of an element to XYZ 57.6623, 56.9864, 55.5373 is called "background". The background property can be set on classes, ids or directly on the HTML element.

```
.background, #background, body{  
background: rgb(220, 193, 188) }
```

If only the background color should be changed can be used:

```
.background{ background-color: rgb(220,  
193, 188) }
```

This example shows the color as background, it is applied via the CSS property "background".

To optimize and compress your CSS code, you can use our [online CSS compressor and optimizer](#) based on csstidy. If you want to create a linear or radial gradient as background or border, check our [CSS Gradient Generator](#).

Hey! You found this booklet interesting? Support Converting Colors with the new Membership Option!

The pro membership hides all ads, plus gives you double the colors in the color bucket, and more awesome pro features!

**[Learn more, Memberships starting at \\$2.50/m!](#)**

**Follow me  
on Twitter!**

@ConvertingColor