

Converting Colors

XYZ(57.7691, 55.7277, 53.8452)

Have a look what the booklet for
XYZ(57.7691, 55.7277, 53.8452)
contains.

XYZ(57.6950, 55.7453, 53.6180)	3
<i>Conversions</i>	4
<i>Details</i>	6
<i>Harmonies</i>	12
<i>Previews</i>	24
<i>Color Blindness Simulation</i>	28
<i>CSS Examples</i>	31

Color

**XYZ(57.6950, 55.7453,
53.6180)**

Conversions

Conversions Part 1

Format	Color
Hex	E0BDB9
RGB	224, 189, 185
RGB Percent	88%, 74%, 73%
CMY	0.1216, 0.2588, 0.2745
CMYK	0.00, 0.16, 0.17, 0.12
HSL	6°, 39%, 80%
HSV	6°, 17%, 88%
XYZ	57.6950, 55.7453, 53.6180
YIQ	199.0090, 22.1440, 6.1760

Conversions

Conversions Part 2

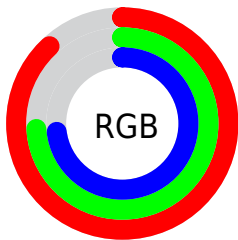
Format	Color
R _Y B	224, 189, 185
Decimal	14728633
CIE Lab	79.47, 11.85, 6.67
CIE LCh	79, 13.597, 29.355
Yxy	55.7453, 0.3454, 0.3337
Android (android.graphics.Color)	4292918713 (0xFFE0BDB9)
YUV	199.0090, -6.9064, 21.9171
Hunter-Lab	74.6628, 7.2744, 9.6857

Details

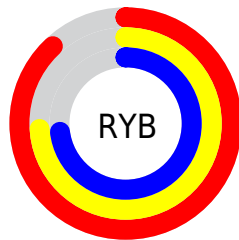
The XYZ color **57.6950, 55.7453, 53.6180** is a light color, and the websafe version is hex **FFCCCC**. A complement of this color would be **59.0548, 66.8808, 80.3181**, and the grayscale version is **54.3243, 57.1534, 62.2401**.

A 20% lighter version of the original color is **89.7696, 92.9157, 96.4222**, and **29.1175, 27.5991, 25.6223** is the 20% darker color. If you saturate the color by 10%, you get **51.4862, 46.8182, 40.7865**, and if you desaturate by 10%, it is **64.8787, 66.0249, 68.6137**.

Distribution



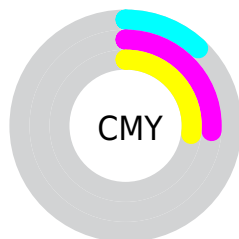
- Red (88%)
- Green (74%)
- Blue (73%)



- Red (88%)
- Yellow (74%)
- Blue (73%)



- Cyan (0%)
- Magenta (16%)
- Yellow (17%)
- Black (12%)





- Cyan (12%)
- Magenta (26%)
- Yellow (27%)

Brightness & Saturation Gradients


These gradients show how the XYZ color 57.6950, 55.7453, 53.6180 changes by changing the brightness by 10 percent. The first figure shows a shift by +10% for each color and the second figure -10%.

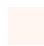
Similar to the brightness gradients but the following saturation gradients show a change of the XYZ color 57.6950, 55.7453, 53.6180 by changing the saturation by 10% instead.


 57.6950, 55.7453,
53.6180

 57.6950, 55.7453,
53.6180


406.0207,
408.7309, 417.7850

 41.8058, 39.9988,
37.9052


 100.6041, 98.6321,
96.9639

 29.1397, 27.5376,
25.6079


128.3547,
126.5411, 125.4341

 19.3313, 17.9774,
16.3074


160.7898,
159.2731, 158.9938

 12.0154, 10.9337,
9.5852

198.2748,
197.2124, 198.0617

 6.8264, 6.0223,
5.0228

241.1751,
240.7434, 243.0562

 3.3991, 2.8586,
2.2017

289.8559,

 1.3682, 1.0584,

290.2506, 294.3959

0.6753

344.6826,
346.1183, 352.4993

■ 0.2334, 0.0000,
0.0000

■ 0.0000, 0.0000,
0.0000

■ 57.6950, 55.7453,
53.6180

■ 57.6950, 55.7453,
53.6180

■ 51.4862, 46.8182,
40.7865

■ 64.8787, 66.0249,
68.6137

■ 46.2058, 39.1801,
30.0160

■ 73.0720, 77.7020,
85.8635

■ 41.8103, 32.7736,
21.2000

■ 82.3136, 90.8291,
105.4564

■ 38.2511, 27.5341,
14.2209

■ 84.5506, 94.5874,
108.4086

■ 35.4746, 23.3911,
8.9487

■ 33.4211, 20.2663,
5.2363

■ 32.0221, 18.0711,
2.9116

■ 31.1925, 16.7003,
1.7460

■ 31.0470, 16.4601,
1.5408

Harmonies

Analogous

The Analogous color harmony consists of three colors that are next to each other on the color wheel.



58.4114, 55.7453, 60.8665



57.6950, 55.7453, 53.6180



55.7066, 55.7453, 48.6542

Triad

The Triadic color harmony groups three colors that are evenly spaced from another and form a triangle on the color wheel.



57.6950, 55.7453, 53.6180



48.5929, 55.7453, 53.3486



52.9252, 55.7453, 77.0142

Complementary

The Complementary color scheme is a pair of colors which are on the opposite of each other on the color wheel.



57.6950, 55.7453, 53.6180



59.0548, 66.8808, 80.3181

Split Complementary

Split-complementary colors differ from the complementary color scheme. The scheme consists of three colors, the original color and two neighbors of the complement color.



50.3520, 55.7453, 74.5795



57.6950, 55.7453, 53.6180



47.9041, 55.7453, 60.5281

Square

The Square scheme is like the rectangle color scheme, but the four colors are evenly spaced on the color wheel.



57.6950, 55.7453, 53.6180



50.4510, 55.7453, 48.5083



48.5371, 55.7453, 68.3735



55.6009, 55.7453, 74.7738

Rectangle

The Rectangle color scheme consists of four colors that form a rectangle on the color wheel.



57.6950, 55.7453, 53.6180



53.9603, 55.7453, 47.0821



48.5371, 55.7453, 68.3735



52.0200, 55.7453, 76.7124

Sweetspot

The Sweet Spot groups the original color and five complimentary colors.



57.6965, 55.7478, 53.6192



89.5228, 92.1222, 97.2644



61.0215, 55.7185, 75.3186



19.0013, 19.4892, 20.4819



0.0000, 0.0000, 0.0000



20.3446, 21.4041, 23.3091

Same Dimension

The Same Dimension uses a secret algorithm to generate beautiful new colors.



57.6965, 55.7478, 53.6192



74.1359, 70.0988, 65.1593



62.1515, 64.6577, 55.1041



13.8199, 13.9258, 14.2663



18.1106, 9.6590, 0.9098



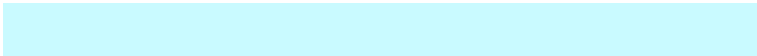
1.2943, 0.7474, 0.0760

Inverse Universe

The Inverse Universe completely reimagines the original color for something new.



59.0548, 66.8808, 80.3181



76.2895, 87.7619, 107.5266



54.2563, 57.2838, 78.7186



13.9900, 15.3192, 17.6072



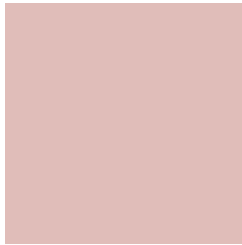
20.0387, 27.5469, 45.3093



1.4241, 1.9797, 3.1523

Previews

White Background



This preview shows how the XYZ color 57.6950, 55.7453, 53.6180 looks on a white background.

Color Contrast Check

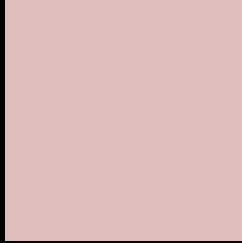
Large Text (above 18pt) WCAG AA × Fail

Any Text WCAG AA × Fail

Large Text (above 18pt) WCAG AAA × Fail

Any Text WCAG AAA × Fail

Black Background



This preview shows how the XYZ color 57.6950, 55.7453, 53.6180 looks on a black background.

Color Contrast Check

Large Text (above 18pt) WCAG AA ✓ Pass

Any Text WCAG AA ✓ Pass

Large Text (above 18pt) WCAG AAA ✓ Pass

Any Text WCAG AAA ✓ Pass

If you want to check with other color combinations, try the [Color Contrast Checker](#).

XYZ 57.6950, 55.7453, 53.6180

Background



This preview shows how black text looks on a background with the XYZ color 57.6950, 55.7453, 53.6180.



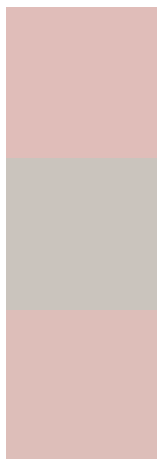
This preview shows how white text looks on a background with the XYZ color 57.6950, 55.7453,

53.6180.

Color Blindness Simulation

Color vision deficiency is a very complex topic, and I could not describe the different causes any better than Wikipedia does, so if you want to learn more, you should check out their [article about color blindness](#).

Dichromacy



Original Color

57.6950, 55.7453, 53.6180

Protanopia

53.2824, 55.7105, 56.0890

Deuteranopia

56.9892, 55.7018, 53.6468



Tritanopia

59.6770, 55.9264, 62.9079

Trichromacy



Original Color

57.6950, 55.7453, 53.6180

Protanomaly

54.7254, 55.4724, 55.3999

Deuteranomaly

57.2946, 55.8593, 53.6611

Tritanomaly

58.8849, 55.9141, 59.3187

Monochromacy



Original Color

57.6950, 55.7453, 53.6180

Achromatopsia

54.2854, 57.1125, 62.1955

Achromatomaly

55.2651, 56.3352, 58.9999

CSS Examples

Text

The CSS property to change the color of the text to XYZ 57.6950, 55.7453, 53.6180 is called "color". The color property can be set on classes, ids or directly on the HTML element.

This example shows how text in the color `rgb(224, 189, 185)` looks like.

```
.text, #text, p{  
    color:rgb(224, 189, 185)  
}
```

If you want to add a text shadow in that color use the text-shadow property, you can generate a text shadow directly with our [CSS Text Shadow Generator](#).

Here you see how black text with a 4 pixel rgb(224, 189, 185) colored shadow looks like.

```
.shadow{ text-shadow: 4px 4px 2px rgb(224, 189, 185) }
```

Border

The CSS property to change the border of an element to XYZ 57.6950, 55.7453, 53.6180 is called "border". The border property can be set on classes, ids or directly on the HTML element.

This example shows the color as border, it can be applied via the CSS property "border" or "border-color".

```
.border, #border, table{ border:4px solid rgb(224, 189, 185) }
```


If only the border color should be changed use the property `border-color`.

```
.border{ border-color:rgb(224, 189, 185) }
```

If you want to add a box shadow in that color use:

Here you see how a box with a 4 pixel `rgb(224, 189, 185)` colored shadow looks like.

```
.boxshadow{ -moz-box-shadow:4px 4px 4px  
4px rgb(224, 189, 185); -webkit-box-  
shadow:4px 4px 4px 4px rgb(224, 189, 185);  
box-shadow:4px 4px 4px 4px rgb(224, 189,  
185) }
```

Background

The CSS property to change the background color of an element to XYZ 57.6950, 55.7453, 53.6180 is called "background". The background property can be set on classes, ids or directly on the HTML element.

```
.background, #background, body{  
background: rgb(224, 189, 185) }
```

If only the background color should be changed can be used:

```
.background{ background-color: rgb(224,  
189, 185) }
```

This example shows the color as background, it is applied via the CSS property "background".

To optimize and compress your CSS code, you can use our [online CSS compressor and optimizer](#) based on csstidy. If you want to create a linear or radial gradient as background or border, check our [CSS Gradient Generator](#).

Hey! You found this booklet interesting? Support Converting Colors with the new Membership Option!

The pro membership hides all ads, plus gives you double the colors in the color bucket, and more awesome pro features!

[Learn more, Memberships starting at \\$2.50/m!](#)

**Follow me
on Twitter!**

@ConvertingColor