

Converting Colors

XYZ(57.8051, 55.1056, 56.3050)

Have a look what the booklet for
XYZ(57.8051, 55.1056, 56.3050)
contains.

XYZ(57.8051, 55.1056, 56.3050)	3
<i>Conversions</i>	4
<i>Details</i>	6
<i>Harmonies</i>	12
<i>Previews</i>	24
<i>Color Blindness Simulation</i>	28
<i>CSS Examples</i>	31

Color

**XYZ(57.8051, 55.1056,
56.3050)**

Conversions

Conversions Part 1

Format	Color
Hex	E0BBBE
RGB	224, 187, 190
RGB Percent	88%, 73%, 75%
CMY	0.1216, 0.2666, 0.2549
CMYK	0.00, 0.17, 0.15, 0.12
HSL	355°, 37%, 81%
HSV	355°, 17%, 88%
XYZ	57.8051, 55.1056, 56.3050
YIQ	198.4050, 21.0890, 8.7770

Conversions

Conversions Part 2

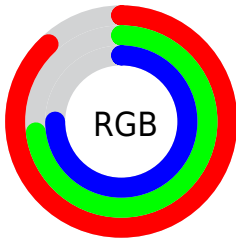
Format	Color
RYB	224, 187, 190
Decimal	14728126
CIELab	79.10, 13.70, 3.44
CIELCh	79, 14.125, 14.087
Yxy	55.1056, 0.3416, 0.3257
Android (android.graphics.Color)	4292918206 (0xFFE0BBBE)
YUV	198.4050, -4.1437, 22.4468
Hunter-Lab	74.2331, 9.0893, 6.9924

Details

The XYZ color **57.8051, 55.1056, 56.3050** is a light color, and the websafe version is hex **FFCCCC**. A complement of this color would be **60.2025, 69.0980, 78.5743**, and the grayscale version is **53.9396, 56.7487, 61.7993**.

A 20% lighter version of the original color is **89.9251, 92.0150, 100.2099**, and **29.1889, 27.1812, 27.3750** is the 20% darker color. If you saturate the color by 10%, you get **51.3253, 45.4957, 43.8173**, and if you desaturate by 10%, it is **65.3470, 66.3300, 70.7159**.

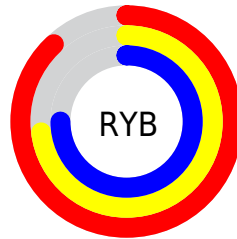
Distribution



Red (88%)

Green (73%)

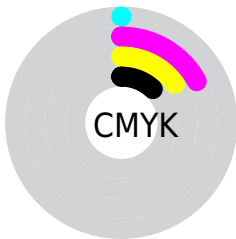
Blue (75%)



Red (88%)

Yellow (73%)

Blue (75%)

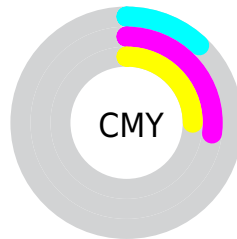


Cyan (0%)

Magenta (17%)

Yellow (15%)

Black (12%)



Cyan (12%)

Magenta (27%)

Yellow (25%)

Brightness & Saturation Gradients

These gradients show how the XYZ color 57.8051, 55.1056, 56.3050 changes by changing the brightness by 10 percent. The first figure shows a shift by +10% for each color and the second figure -10%.

Similar to the brightness gradients but the following saturation gradients show a change of the XYZ color 57.8051, 55.1056, 56.3050 by changing the saturation by 10% instead.

■ 57.8051, 55.1056,
56.3050

■ 57.8051, 55.1056,
56.3050

406.4249,
406.3121, 428.2605

■ 41.8946, 39.4863,
40.0419

■ 100.7636, 97.6957,
100.9406

■ 29.2095, 27.1382,
27.2572

128.5423,
125.4352, 130.1502

■ 19.3845, 17.6771,
17.5323

161.0078,
157.9836, 164.5123

■ 12.0541, 10.7184,
10.4488

198.5255,
195.7252, 204.4456

■ 6.8530, 5.8778,
5.5880

241.4607,
239.0445, 250.3685

■ 3.4158, 2.7709,
2.5315

290.1788,

■ 1.3773, 1.0133,

288.3258, 302.6996

0.8568

345.0450,
343.9535, 361.8574

■ 0.2400, 0.0000,
0.0000

■ 0.0000, 0.0000,
0.0000

■ 57.8051, 55.1056,
56.3050

■ 57.8051, 55.1056,
56.3050

■ 51.3253, 45.4957,
43.8173

■ 65.3470, 66.3300,
70.7159

■ 45.8555, 37.4190,
33.1681

■ 73.9910, 79.2305,
87.1230

■ 41.3461, 30.7984,
24.2717

■ 83.7804, 93.8746,
105.5996

■ 37.7416, 25.5473,
17.0339

■ 84.5508, 94.5875,
108.4086

■ 34.9804, 21.5695,
11.3518

■ 32.9937, 18.7569,
7.1111

■ 31.7014, 16.9829,
4.1815

■ 31.0044, 16.0884,
2.4088

■ 30.8511, 15.8916,
2.0197

Harmonies

Analogous

The Analogous color harmony consists of three colors that are next to each other on the color wheel.



57.7574, 55.1056, 64.3531



57.8051, 55.1056, 56.3050



56.3622, 55.1056, 49.8459

Triad

The Triadic color harmony groups three colors that are evenly spaced from another and form a triangle on the color wheel.



57.8051, 55.1056, 56.3050



48.6988, 55.1056, 49.5379



50.9058, 55.1056, 76.1819

Complementary

The Complementary color scheme is a pair of colors which are on the opposite of each other on the color wheel.



57.8051, 55.1056, 56.3050



60.2025, 69.0980, 78.5743

Split Complementary

Split-complementary colors differ from the complementary color scheme. The scheme consists of three colors, the original color and two neighbors of the complement color.



48.5827, 55.1056, 71.4485



57.8051, 55.1056, 56.3050



47.3401, 55.1056, 55.8490

Square

The Square scheme is like the rectangle color scheme, but the four colors are evenly spaced on the color wheel.



57.8051, 55.1056, 56.3050



51.0694, 55.1056, 46.1826



47.2984, 55.1056, 63.8545



53.7051, 55.1056, 76.3319

Rectangle

The Rectangle color scheme consists of four colors that form a rectangle on the color wheel.



57.8051, 55.1056, 56.3050



54.7780, 55.1056, 47.1063



47.2984, 55.1056, 63.8545



50.0457, 55.1056, 75.0563

Sweetspot

The Sweet Spot groups the original color and five complimentary colors.



57.8066, 55.1081, 56.3062



89.2870, 91.4013, 97.9542



61.0200, 56.2840, 78.1696



18.9442, 19.3149, 20.6488



0.0000, 0.0000, 0.0000



20.3446, 21.4041, 23.3091

Same Dimension

The Same Dimension uses a secret algorithm to generate beautiful new colors.



57.8066, 55.1081, 56.3062



74.2341, 69.0062, 69.1656



60.9302, 61.8740, 55.7481



13.7521, 13.7185, 14.4646



17.9742, 9.2567, 1.2638



1.2618, 0.6480, 0.1712

Inverse Universe

The Inverse Universe completely reimagines the original color for something new.



57.8066, 55.1081, 56.3062



74.2341, 69.0062, 69.1656



56.6485, 61.3454, 79.3769



13.7521, 13.7185, 14.4646



17.9742, 9.2567, 1.2638



1.2618, 0.6480, 0.1712

Previews

White Background



This preview shows how the XYZ color 57.8051, 55.1056, 56.3050 looks on a white background.

Color Contrast Check

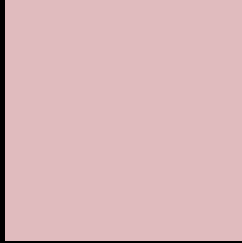
Large Text (above 18pt) WCAG AA × Fail

Any Text WCAG AA × Fail

Large Text (above 18pt) WCAG AAA × Fail

Any Text WCAG AAA × Fail

Black Background



This preview shows how the XYZ color 57.8051, 55.1056, 56.3050 looks on a black background.

Color Contrast Check

Large Text (above 18pt) WCAG AA ✓ Pass

Any Text WCAG AA ✓ Pass

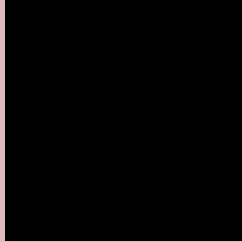
Large Text (above 18pt) WCAG AAA ✓ Pass

Any Text WCAG AAA ✓ Pass

If you want to check with other color combinations, try the [Color Contrast Checker](#).

XYZ 57.8051, 55.1056, 56.3050

Background



This preview shows how black text looks on a background with the XYZ color 57.8051, 55.1056, 56.3050.



This preview shows how white text looks on a background with the XYZ color 57.8051, 55.1056,

56.3050.

Color Blindness Simulation

Color vision deficiency is a very complex topic, and I could not describe the different causes any better than Wikipedia does, so if you want to learn more, you should check out their [article about color blindness](#).

Dichromacy



Original Color

57.8051, 55.1056, 56.3050

Protanopia

53.1849, 55.2497, 59.4909

Deuteranopia

56.3230, 55.2963, 56.4199



Tritanopia

58.8256, 54.8756, 62.1352

Trichromacy



Original Color

57.8051, 55.1056, 56.3050

Protanomaly

54.7698, 55.1048, 58.2017

Deuteranomaly

57.0071, 55.3285, 56.3901

Tritanomaly

58.5740, 55.1109, 59.7748

Monochromacy



Original Color

57.8051, 55.1056, 56.3050

Achromatopsia

53.6758, 56.4712, 61.4971

Achromatomaly

54.8742, 55.7891, 59.5059

CSS Examples

Text

The CSS property to change the color of the text to XYZ 57.8051, 55.1056, 56.3050 is called "color". The color property can be set on classes, ids or directly on the HTML element.

This example shows how text in the color `rgb(224, 187, 190)` looks like.

```
.text, #text, p{  
    color:rgb(224, 187, 190)  
}
```

If you want to add a text shadow in that color use the text-shadow property, you can generate a text shadow directly with our [CSS Text Shadow Generator](#).

Here you see how black text with a 4 pixel rgb(224, 187, 190) colored shadow looks like.

```
.shadow{ text-shadow: 4px 4px 2px rgb(224, 187, 190) }
```

Border

The CSS property to change the border of an element to XYZ 57.8051, 55.1056, 56.3050 is called "border". The border property can be set on classes, ids or directly on the HTML element.

This example shows the color as border, it can be applied via the CSS property "border" or "border-color".

```
.border, #border, table{ border:4px solid rgb(224, 187, 190) }
```


If only the border color should be changed use the property `border-color`.

```
.border{ border-color:rgb(224, 187, 190) }
```

If you want to add a box shadow in that color use:

Here you see how a box with a 4 pixel `rgb(224, 187, 190)` colored shadow looks like.

```
.boxshadow{ -moz-box-shadow:4px 4px 4px  
4px rgb(224, 187, 190); -webkit-box-  
shadow:4px 4px 4px 4px rgb(224, 187, 190);  
box-shadow:4px 4px 4px 4px rgb(224, 187,  
190) }
```

Background

The CSS property to change the background color of an element to XYZ 57.8051, 55.1056, 56.3050 is called "background". The background property can be set on classes, ids or directly on the HTML element.

```
.background, #background, body{  
background: rgb(224, 187, 190) }
```

If only the background color should be changed can be used:

```
.background{ background-color: rgb(224,  
187, 190) }
```

This example shows the color as background, it is applied via the CSS property "background".

To optimize and compress your CSS code, you can use our [online CSS compressor and optimizer](#) based on csstidy. If you want to create a linear or radial gradient as background or border, check our [CSS Gradient Generator](#).

Hey! You found this booklet interesting? Support Converting Colors with the new Membership Option!

The pro membership hides all ads, plus gives you double the colors in the color bucket, and more awesome pro features!

[Learn more, Memberships starting at \\$2.50/m!](#)

**Follow me
on Twitter!**

@ConvertingColor