

Converting Colors

XYZ(57.8192, 56.4524, 53.7479)

Have a look what the booklet for
XYZ(57.8192, 56.4524, 53.7479)
contains.

XYZ(57.8192, 56.4524, 53.7479)	3
<i>Conversions</i>	4
<i>Details</i>	6
<i>Harmonies</i>	12
<i>Previews</i>	24
<i>Color Blindness Simulation</i>	28
<i>CSS Examples</i>	31

Color

**XYZ(57.8192, 56.4524,
53.7479)**

Conversions

Conversions Part 1

Format	Color
Hex	DFBFB9
RGB	223, 191, 185
RGB Percent	87%, 75%, 73%
CMY	0.1255, 0.2510, 0.2745
CMYK	0.00, 0.14, 0.17, 0.13
HSL	9°, 37%, 80%
HSV	9°, 17%, 87%
XYZ	57.8192, 56.4524, 53.7479
YIQ	199.8840, 20.9980, 4.9180

Conversions

Conversions Part 2

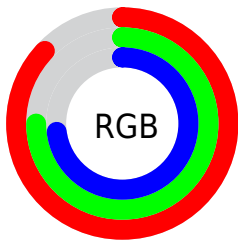
Format	Color
R _Y B	223, 192, 185
Decimal	14663609
CIE Lab	79.87, 10.42, 7.23
CIE LCh	80, 12.685, 34.754
Yxy	56.4524, 0.3441, 0.3360
Android (android.graphics.Color)	4292853689 (0xFFDFBFB9)
YUV	199.8840, -7.3378, 20.2727
Hunter-Lab	75.1348, 5.8769, 10.1811

Details

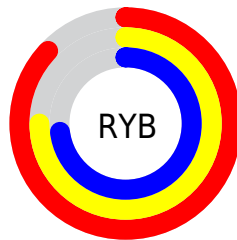
The XYZ color **57.8192, 56.4524, 53.7479** is a light color, and the websafe version is hex **FFCCCC**. A complement of this color would be **58.1392, 65.2661, 79.3459**, and the grayscale version is **54.8643, 57.7215, 62.8587**.

A 20% lighter version of the original color is **90.3779, 94.1324, 96.6250**, and **29.1897, 28.0584, 25.7071** is the 20% darker color. If you saturate the color by 10%, you get **51.8119, 47.9140, 41.0277**, and if you desaturate by 10%, it is **64.7238, 66.1935, 68.5902**.

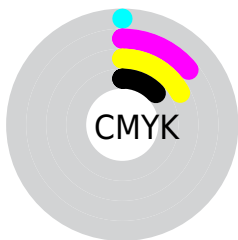
Distribution



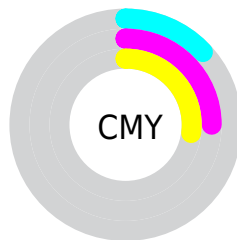
- Red (87%)
- Green (75%)
- Blue (73%)



- Red (87%)
- Yellow (75%)
- Blue (73%)



- Cyan (0%)
- Magenta (14%)
- Yellow (17%)
- Black (13%)



- Cyan (13%)
- Magenta (25%)
- Yellow (27%)

Brightness & Saturation Gradients

These gradients show how the XYZ color 57.8192, 56.4524, 53.7479 changes by changing the brightness by 10 percent. The first figure shows a shift by +10% for each color and the second figure -10%.

Similar to the brightness gradients but the following saturation gradients show a change of the XYZ color 57.8192, 56.4524, 53.7479 by changing the saturation by 10% instead.

■ 57.8192, 56.4524,
53.7479

■ 57.8192, 56.4524,
53.7479

406.4766,
411.3942, 418.2954

■ 41.9060, 40.5658,
38.0083

■ 100.7840, 99.6657,
97.1567

■ 29.2185, 27.9799,
25.6873

128.5663,
127.7612, 125.6629

■ 19.3913, 18.3105,
16.3662

161.0357,
160.6951, 159.2619

■ 12.0590, 11.1732,
9.6265

198.5576,
198.8517, 198.3720

■ 6.8564, 6.1834,
5.0497

241.4973,
242.6156, 243.4119

■ 3.4180, 2.9569,
2.2172

290.2201,

■ 1.3785, 1.1093,

292.3710, 294.8001

0.6843

345.0914,
348.5024, 352.9550

■ 0.2408, 0.0000,
0.0000

■ 0.0000, 0.0000,
0.0000

■ 57.8192, 56.4524,
53.7479

■ 57.8192, 56.4524,
53.7479

■ 51.8119, 47.9140,
41.0277

■ 64.7238, 66.1935,
68.5902

■ 46.6604, 40.5243,
30.3290

■ 72.5560, 77.1735,
85.6417

■ 42.3265, 34.2362,
21.5485

■ 81.3500, 89.4367,
104.9891

■ 38.7676, 28.9966,
14.5720

■ 84.2416, 94.4281,
108.3942

■ 35.9370, 24.7480,
9.2735

■ 33.7827, 21.4270,
5.5105

■ 32.2456, 18.9632,
3.1167

■ 31.2536, 17.2742,
1.8766

■ 31.0396, 16.9041,
1.6268

Harmonies

Analogous

The Analogous color harmony consists of three colors that are next to each other on the color wheel.



58.7326, 56.4524, 60.3016



57.8192, 56.4524, 53.7479



55.7914, 56.4524, 49.5355

Triad

The Triadic color harmony groups three colors that are evenly spaced from another and form a triangle on the color wheel.



57.8192, 56.4524, 53.7479



49.3101, 56.4524, 55.6271



54.0669, 56.4524, 76.6754

Complementary

The Complementary color scheme is a pair of colors which are on the opposite of each other on the color wheel.



57.8192, 56.4524, 53.7479



58.1392, 65.2661, 79.3459

Split Complementary

Split-complementary colors differ from the complementary color scheme. The scheme consists of three colors, the original color and two neighbors of the complement color.



51.5764, 56.4524, 75.1755



57.8192, 56.4524, 53.7479



48.8813, 56.4524, 62.6474

Square

The Square scheme is like the rectangle color scheme, but the four colors are evenly spaced on the color wheel.



57.8192, 56.4524, 53.7479



50.8886, 56.4524, 50.5582



49.6982, 56.4524, 69.8920



56.5226, 56.4524, 73.8420

Rectangle

The Rectangle color scheme consists of four colors that form a rectangle on the color wheel.



57.8192, 56.4524, 53.7479



54.1093, 56.4524, 48.4248



49.6982, 56.4524, 69.8920



53.2058, 56.4524, 76.6631

Sweetspot

The Sweet Spot groups the original color and five complimentary colors.



57.8207, 56.4549, 53.7491



89.7350, 92.5466, 97.3351



60.3444, 55.4120, 73.3660



19.0526, 19.5920, 20.4991



0.0000, 0.0000, 0.0000



20.3446, 21.4041, 23.3091

Same Dimension

The Same Dimension uses a secret algorithm to generate beautiful new colors.



57.8207, 56.4549, 53.7491



75.6972, 72.7358, 67.1765



62.1616, 65.1366, 55.1960



13.8813, 14.0485, 14.2868



18.3038, 10.0454, 0.9742



1.3233, 0.8056, 0.0857

Inverse Universe

The Inverse Universe completely reimagines the original color for something new.



58.1392, 65.2661, 79.3459



76.1947, 86.5432, 107.2964



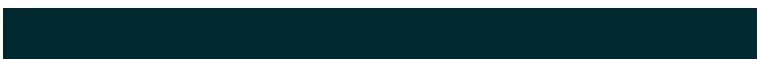
53.5903, 56.1682, 77.8296



13.9225, 15.1841, 17.5847



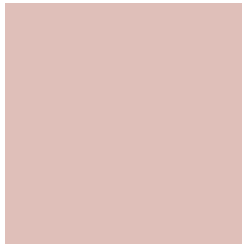
18.4447, 24.3590, 44.7780



1.3287, 1.7888, 3.1205

Previews

White Background



This preview shows how the XYZ color 57.8192, 56.4524, 53.7479 looks on a white background.

Color Contrast Check

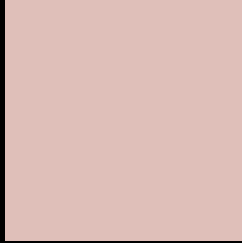
Large Text (above 18pt) WCAG AA × Fail

Any Text WCAG AA × Fail

Large Text (above 18pt) WCAG AAA × Fail

Any Text WCAG AAA × Fail

Black Background



This preview shows how the XYZ color 57.8192, 56.4524, 53.7479 looks on a black background.

Color Contrast Check

Large Text (above 18pt) WCAG AA ✓ Pass

Any Text WCAG AA ✓ Pass

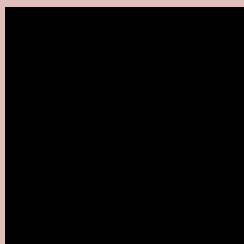
Large Text (above 18pt) WCAG AAA ✓ Pass

Any Text WCAG AAA ✓ Pass

If you want to check with other color combinations, try the [Color Contrast Checker](#).

XYZ 57.8192, 56.4524, 53.7479

Background



This preview shows how black text looks on a background with the XYZ color 57.8192, 56.4524, 53.7479.



This preview shows how white text looks on a background with the XYZ color 57.8192, 56.4524,

Color Blindness Simulation

Color vision deficiency is a very complex topic, and I could not describe the different causes any better than Wikipedia does, so if you want to learn more, you should check out their [article about color blindness](#).

Dichromacy



Original Color

57.8192, 56.4524, 53.7479

Protanopia

53.9452, 56.4007, 55.6202

Deuteranopia

57.5120, 56.2940, 53.7336



Tritanopia

59.8140, 56.2858, 64.2116

Trichromacy



Original Color

57.8192, 56.4524, 53.7479

Protanomaly

55.3487, 56.4670, 54.9957

Deuteranomaly

57.5120, 56.2940, 53.7336

Tritanomaly

58.9019, 56.2280, 59.9732

Monochromacy



Original Color

57.8192, 56.4524, 53.7479

Achromatopsia

54.8990, 57.7580, 62.8985

Achromatomaly

55.8290, 57.2825, 59.7439

CSS Examples

Text

The CSS property to change the color of the text to XYZ 57.8192, 56.4524, 53.7479 is called "color". The color property can be set on classes, ids or directly on the HTML element.

This example shows how text in the color `rgb(223, 191, 185)` looks like.

```
.text, #text, p{  
    color:rgb(223, 191, 185)  
}
```

If you want to add a text shadow in that color use the text-shadow property, you can generate a text shadow directly with our [CSS Text Shadow Generator](#).

Here you see how black text with a 4 pixel rgb(223, 191, 185) colored shadow looks like.

```
.shadow{ text-shadow: 4px 4px 2px rgb(223, 191, 185) }
```

Border

The CSS property to change the border of an element to XYZ 57.8192, 56.4524, 53.7479 is called "border". The border property can be set on classes, ids or directly on the HTML element.

This example shows the color as border, it can be applied via the CSS property "border" or "border-color".

```
.border, #border, table{ border:4px solid rgb(223, 191, 185) }
```


If only the border color should be changed use the property `border-color`.

```
.border{ border-color:rgb(223, 191, 185) }
```

If you want to add a box shadow in that color use:

Here you see how a box with a 4 pixel `rgb(223, 191, 185)` colored shadow looks like.

```
.boxshadow{ -moz-box-shadow:4px 4px 4px 4px rgb(223, 191, 185); -webkit-box-shadow:4px 4px 4px 4px rgb(223, 191, 185); box-shadow:4px 4px 4px 4px rgb(223, 191, 185) }
```

Background

The CSS property to change the background color of an element to XYZ 57.8192, 56.4524, 53.7479 is called "background". The background property can be set on classes, ids or directly on the HTML element.

```
.background, #background, body{  
background: rgb(223, 191, 185) }
```

If only the background color should be changed can be used:

```
.background{ background-color: rgb(223,  
191, 185) }
```

This example shows the color as background, it is applied via the CSS property "background".

To optimize and compress your CSS code, you can use our [online CSS compressor and optimizer](#) based on csstidy. If you want to create a linear or radial gradient as background or border, check our [CSS Gradient Generator](#).

Hey! You found this booklet interesting? Support Converting Colors with the new Membership Option!

The pro membership hides all ads, plus gives you double the colors in the color bucket, and more awesome pro features!

[Learn more, Memberships starting at \\$2.50/m!](#)

**Follow me
on Twitter!**

@ConvertingColor