

Converting Colors

XYZ(57.9016, 58.1934, 59.6273)

Have a look what the booklet for
XYZ(57.9016, 58.1934, 59.6273)
contains.

XYZ(58.1355, 58.4716, 59.8518)	3
<i>Conversions</i>	4
<i>Details</i>	6
<i>Harmonies</i>	12
<i>Previews</i>	24
<i>Color Blindness Simulation</i>	28
<i>CSS Examples</i>	31

Color

**XYZ(58.1355, 58.4716,
59.8518)**

Conversions

Conversions Part 1

Format	Color
Hex	D8C5C3
RGB	216, 197, 195
RGB Percent	85%, 77%, 76%
CMY	0.1529, 0.2274, 0.2353
CMYK	0.00, 0.09, 0.10, 0.15
HSL	6°, 21%, 81%
HSV	6°, 10%, 85%
XYZ	58.1355, 58.4716, 59.8518
YIQ	202.4530, 11.9660, 3.4060

Conversions

Conversions Part 2

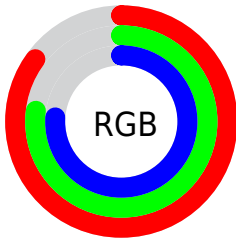
Format	Color
R _Y B	216, 197, 195
Decimal	14206403
CIE Lab	81.00, 6.32, 3.41
CIE LCh	81, 7.184, 28.325
Yxy	58.4716, 0.3295, 0.3314
Android (android.graphics.Color)	4292396483 (0xFFD8C5C3)
YUV	202.4530, -3.6743, 11.8807
Hunter-Lab	76.4667, 1.8918, 7.1194

Details

The XYZ color **58.1355, 58.4716, 59.8518** is a light color, and the websafe version is hex **CCCCCC**. A complement of this color would be **58.9467, 64.6519, 74.3387**, and the grayscale version is **56.4404, 59.3797, 64.6645**.

A 20% lighter version of the original color is **94.2525, 99.1719, 106.2699**, and **29.3281, 29.1451, 29.2791** is the 20% darker color. If you saturate the color by 10%, you get **51.7153, 49.2606, 46.5216**, and if you desaturate by 10%, it is **65.4873, 68.9791, 75.2369**.

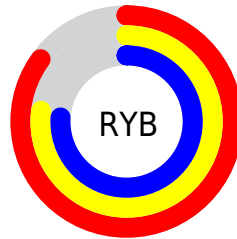
Distribution



Red (85%)

Green (77%)

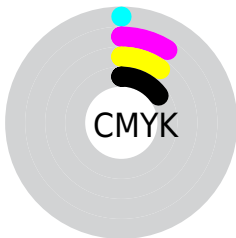
Blue (76%)



Red (85%)

Yellow (77%)

Blue (76%)

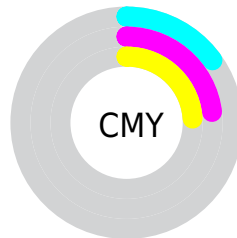


Cyan (0%)

Magenta (9%)

Yellow (10%)

Black (15%)



Cyan (15%)


Magenta (23%)


Yellow (24%)

Brightness & Saturation Gradients


These gradients show how the XYZ color 58.1355, 58.4716, 59.8518 changes by changing the brightness by 10 percent. The first figure shows a shift by +10% for each color and the second figure -10%.


Similar to the brightness gradients but the following saturation gradients show a change of the XYZ color 58.1355, 58.4716, 59.8518 by changing the saturation by 10% instead.


 58.1355, 58.4716,
59.8518

 58.1355, 58.4716,
59.8518

407.6364,
418.9409, 441.8408

 42.1613, 42.1879,
42.8747


 101.2420,
102.6093, 106.1559

 29.4193, 29.2485,
29.4561


129.1050,
131.2321, 136.3200

 19.5441, 19.2689,
19.1776

161.6616,
164.7367, 171.7168

 12.1704, 11.8647,
11.6206

199.2771,
203.5075, 212.7649

 6.9329, 6.6516,
6.3665

242.3170,
247.9290, 259.8828

 3.4661, 3.2452,
2.9968

291.1467,

 1.4048, 1.2610,

298.3854, 313.4890

1.0930

346.1313,
355.2613, 374.0022

■ 0.2596, 0.1107,
0.0000

■ 0.0000, 0.0000,
0.0000

■ 58.1355, 58.4716,
59.8518

■ 58.1355, 58.4716,
59.8518

■ 51.7153, 49.2606,
46.5216

■ 65.4873, 68.9791,
75.2369

■ 46.1849, 41.2886,
35.1557

■ 73.8008, 80.8227,
92.7549

■ 41.5063, 34.5049,
25.6624

■ 82.1292, 93.3391,
108.2953

■ 37.6370, 28.8526,
17.9410

■ 34.5309, 24.2699,
11.8816

■ 32.1370, 20.6894,
7.3618

■ 30.3982, 18.0356,
4.2423

■ 29.2484, 16.2226,
2.3590

■ 28.5935, 15.1425,
1.4330

Harmonies

Analogous

The Analogous color harmony consists of three colors that are next to each other on the color wheel.



58.4884, 58.4716, 63.9058



58.1355, 58.4716, 59.8518



57.0933, 58.4716, 56.9357

Triad

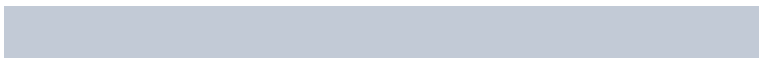
The Triadic color harmony groups three colors that are evenly spaced from another and form a triangle on the color wheel.



58.1355, 58.4716, 59.8518



53.1730, 58.4716, 59.4541



55.4918, 58.4716, 72.2234

Complementary

The Complementary color scheme is a pair of colors which are on the opposite of each other on the color wheel.



58.1355, 58.4716, 59.8518



58.9467, 64.6519, 74.3387

Split Complementary

Split-complementary colors differ from the complementary color scheme. The scheme consists of three colors, the original color and two neighbors of the complement color.



54.0848, 58.4716, 70.9060



58.1355, 58.4716, 59.8518



52.7610, 58.4716, 63.4261

Square

The Square scheme is like the rectangle color scheme, but the four colors are evenly spaced on the color wheel.



58.1355, 58.4716, 59.8518



54.2274, 58.4716, 56.7134



53.0918, 58.4716, 67.6381



56.9458, 58.4716, 71.1640

Rectangle

The Rectangle color scheme consists of four colors that form a rectangle on the color wheel.



58.1355, 58.4716, 59.8518



56.1572, 58.4716, 55.9645



53.0918, 58.4716, 67.6381



54.9978, 58.4716, 72.0427

Sweetspot

The Sweet Spot groups the original color and five complimentary colors.



58.1371, 58.4742, 59.8530



91.6746, 95.1810, 101.8191



60.0043, 58.4978, 71.9152



19.4337, 20.1034, 21.3986



0.0000, 0.0000, 0.0000



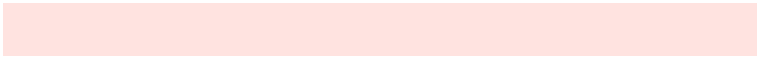
20.3446, 21.4041, 23.3091

Same Dimension

The Same Dimension uses a secret algorithm to generate beautiful new colors.



58.1371, 58.4742, 59.8530



82.3056, 81.7770, 82.2523



60.5434, 63.2867, 60.6551



12.5176, 12.6095, 12.9348



16.9517, 9.0207, 0.8477



1.0559, 0.6110, 0.0623

Inverse Universe

The Inverse Universe completely reimagines the original color for something new.



58.9467, 64.6519, 74.3387



83.7501, 92.8023, 108.1063



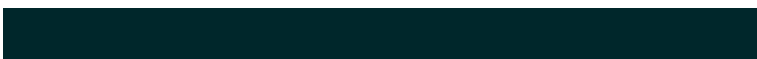
56.4346, 59.6278, 73.5013



12.6862, 13.8958, 15.9510



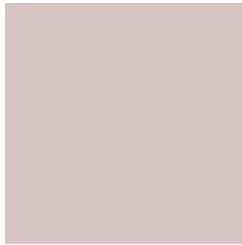
18.9824, 26.2265, 42.5149



1.1750, 1.6421, 2.5743

Previews

White Background



This preview shows how the XYZ color 58.1355, 58.4716, 59.8518 looks on a white background.

Color Contrast Check

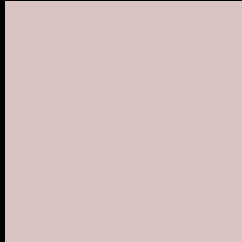
Large Text (above 18pt) WCAG AA × Fail

Any Text WCAG AA × Fail

Large Text (above 18pt) WCAG AAA × Fail

Any Text WCAG AAA × Fail

Black Background



This preview shows how the XYZ color 58.1355, 58.4716, 59.8518 looks on a black background.

Color Contrast Check

Large Text (above 18pt) WCAG AA ✓ Pass

Any Text WCAG AA ✓ Pass

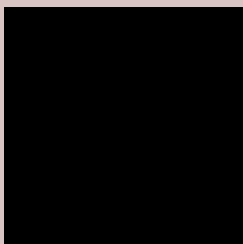
Large Text (above 18pt) WCAG AAA ✓ Pass

Any Text WCAG AAA ✓ Pass

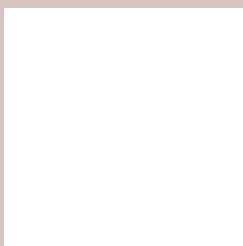
If you want to check with other color combinations, try the [Color Contrast Checker](#).

XYZ 58.1355, 58.4716, 59.8518

Background



This preview shows how black text looks on a background with the XYZ color 58.1355, 58.4716, 59.8518.



This preview shows how white text looks on a background with the XYZ color 58.1355, 58.4716,

59.8518.

Color Blindness Simulation

Color vision deficiency is a very complex topic, and I could not describe the different causes any better than Wikipedia does, so if you want to learn more, you should check out their [article about color blindness](#).

Dichromacy



Original Color

58.1355, 58.4716, 59.8518

Protanopia

56.1859, 58.4616, 61.1462

Deuteranopia

59.7969, 58.6583, 59.8003



Tritanopia

60.0614, 58.5888, 69.1160

Trichromacy



Original Color

58.1355, 58.4716, 59.8518

Protanomaly

56.9656, 58.5340, 60.5203

Deuteranomaly

59.1055, 58.6356, 59.8324

Tritanomaly

59.3746, 58.6393, 65.9468

Monochromacy



Original Color

58.1355, 58.4716, 59.8518

Achromatopsia

56.1383, 59.0619, 64.3184

Achromatomaly

56.6952, 58.6975, 62.3744

CSS Examples

Text

The CSS property to change the color of the text to XYZ 58.1355, 58.4716, 59.8518 is called "color". The color property can be set on classes, ids or directly on the HTML element.

This example shows how text in the color rgb(216, 197, 195) looks like.

```
.text, #text, p{  
    color:rgb(216, 197, 195)  
}
```

If you want to add a text shadow in that color use the text-shadow property, you can generate a text shadow directly with our [CSS Text Shadow Generator](#).

Here you see how black text with a 4 pixel rgb(216, 197, 195) colored shadow looks like.

```
.shadow{ text-shadow: 4px 4px 2px rgb(216, 197, 195) }
```

Border

The CSS property to change the border of an element to XYZ 58.1355, 58.4716, 59.8518 is called "border". The border property can be set on classes, ids or directly on the HTML element.

This example shows the color as border, it can be applied via the CSS property "border" or "border-color".

```
.border, #border, table{ border:4px solid rgb(216, 197, 195) }
```


If only the border color should be changed use the property `border-color`.

```
.border{ border-color:rgb(216, 197, 195) }
```

If you want to add a box shadow in that color use:

Here you see how a box with a 4 pixel `rgb(216, 197, 195)` colored shadow looks like.

```
.boxshadow{ -moz-box-shadow:4px 4px 4px  
4px rgb(216, 197, 195); -webkit-box-  
shadow:4px 4px 4px 4px rgb(216, 197, 195);  
box-shadow:4px 4px 4px 4px rgb(216, 197,  
195) }
```

Background

The CSS property to change the background color of an element to XYZ 58.1355, 58.4716, 59.8518 is called "background". The background property can be set on classes, ids or directly on the HTML element.

```
.background, #background, body{  
background: rgb(216, 197, 195) }
```

If only the background color should be changed can be used:

```
.background{ background-color: rgb(216,  
197, 195) }
```

This example shows the color as background, it is applied via the CSS property "background".

To optimize and compress your CSS code, you can use our [online CSS compressor and optimizer](#) based on csstidy. If you want to create a linear or radial gradient as background or border, check our [CSS Gradient Generator](#).

Hey! You found this booklet interesting? Support Converting Colors with the new Membership Option!

The pro membership hides all ads, plus gives you double the colors in the color bucket, and more awesome pro features!

[Learn more, Memberships starting at \\$2.50/m!](#)

**Follow me
on Twitter!**

@ConvertingColor