

Converting Colors

XYZ(57.9199, 58.7459, 61.9021)

Have a look what the booklet for
XYZ(57.9199, 58.7459, 61.9021)
contains.

XYZ(57.8277, 58.6115, 61.6914)	3
<i>Conversions</i>	4
<i>Details</i>	6
<i>Harmonies</i>	12
<i>Previews</i>	24
<i>Color Blindness Simulation</i>	28
<i>CSS Examples</i>	31

Color

**XYZ(57.8277, 58.6115,
61.6914)**

Conversions

Conversions Part 1

Format	Color
Hex	D5C6C6
RGB	213, 198, 198
RGB Percent	84%, 78%, 78%
CMY	0.1647, 0.2235, 0.2235
CMYK	0.00, 0.07, 0.07, 0.16
HSL	0°, 15%, 81%
HSV	0°, 7%, 84%
XYZ	57.8277, 58.6115, 61.6914
YIQ	202.4850, 8.9400, 3.1800

Conversions

Conversions Part 2

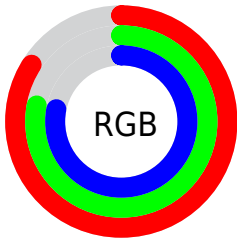
Format	Color
R_{YB}	213, 198, 198
Decimal	14010054
CIE Lab	81.08, 5.24, 1.88
CIE LCh	81, 5.567, 19.738
Yxy	58.6115, 0.3246, 0.3290
Android (android.graphics.Color)	4292200134 (0xFFD5C6C6)
YUV	202.4850, -2.2111, 9.2217
Hunter-Lab	76.5581, 0.8521, 5.8142

Details

The XYZ color **57.8277, 58.6115, 61.6914** is a light color, and the websafe version is hex **CCCCCC**. A complement of this color would be **59.0931, 64.3973, 72.2669**, and the grayscale version is **56.4528, 59.3928, 64.6787**.

A 20% lighter version of the original color is **95.0500, 100.0000, 108.9000**, and **29.1079, 29.2292, 30.4932** is the 20% darker color. If you saturate the color by 10%, you get **51.0119, 48.6386, 48.1386**, and if you desaturate by 10%, it is **65.6767, 70.0964, 77.2946**.

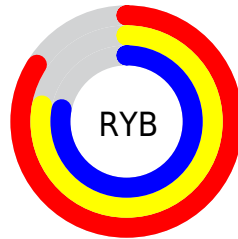
Distribution



Red (84%)

Green (78%)

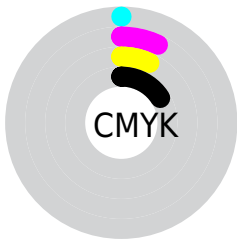
Blue (78%)



Red (84%)

Yellow (78%)

Blue (78%)

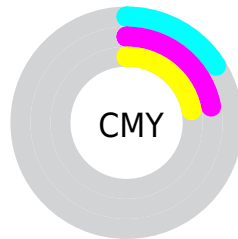


Cyan (0%)

Magenta (7%)

Yellow (7%)

Black (16%)



Cyan (16%)

Magenta (22%)

Yellow (22%)

Brightness & Saturation Gradients

These gradients show how the XYZ color 57.8277, 58.6115, 61.6914 changes by changing the brightness by 10 percent. The first figure shows a shift by +10% for each color and the second figure -10%.

Similar to the brightness gradients but the following saturation gradients show a change of the XYZ color 57.8277, 58.6115, 61.6914 by changing the saturation by 10% instead.

■ 57.8277, 58.6115,
61.6914

■ 57.8277, 58.6115,
61.6914

406.5078,
419.4607, 448.7811

■ 41.9129, 42.3005,
44.3492

100.7963,
102.8128, 108.8467

■ 29.2239, 29.3366,
30.6059

128.5808,
131.4719, 139.4968

■ 19.3954, 19.3356,
20.0430

161.0526,
165.0157, 175.4200

■ 12.0620, 11.9130,
12.2419

198.5770,
203.8288, 217.0349

■ 6.8584, 6.6845,
6.7841

241.5193,
248.2954, 264.7598

■ 3.4193, 3.2656,
3.2511

290.2450,

■ 1.3792, 1.2719,

298.8000, 319.0135

1.2242

345.1194,
355.7269, 380.2144

■ 0.2413, 0.1193,
0.0000

■ 0.0000, 0.0000,
0.0000

■ 57.8277, 58.6115,
61.6914

■ 57.8277, 58.6115,
61.6914

■ 51.0119, 48.6386,
48.1386

■ 65.6767, 70.0964,
77.2946

■ 45.1816, 40.1075,
36.5475

■ 74.5942, 83.1445,
95.0244

■ 40.2927, 32.9538,
26.8283

■ 81.2509, 92.8863,
108.2542

■ 36.2960, 27.1054,
18.8830

■ 33.1375, 22.4835,
12.6044

■ 30.7576, 19.0009,
7.8741

■ 29.0890, 16.5589,
4.5578

■ 28.0526, 15.0420,
2.4986

■ 27.5443, 14.2980,
1.4890

Harmonies

Analogous

The Analogous color harmony consists of three colors that are next to each other on the color wheel.



57.9252, 58.6115, 64.9592



57.8277, 58.6115, 61.6914



57.1579, 58.6115, 59.0808

Triad

The Triadic color harmony groups three colors that are evenly spaced from another and form a triangle on the color wheel.



57.8277, 58.6115, 61.6914



54.0289, 58.6115, 59.7902



55.3133, 58.6115, 70.2915

Complementary

The Complementary color scheme is a pair of colors which are on the opposite of each other on the color wheel.



57.8277, 58.6115, 61.6914



59.0931, 64.3973, 72.2669

Split Complementary

Split-complementary colors differ from the complementary color scheme. The scheme consists of three colors, the original color and two neighbors of the complement color.



54.2837, 58.6115, 68.8018



57.8277, 58.6115, 61.6914



53.5490, 58.6115, 62.6902

Square

The Square scheme is like the rectangle color scheme, but the four colors are evenly spaced on the color wheel.



57.8277, 58.6115, 61.6914



54.9609, 58.6115, 58.0097



53.6417, 58.6115, 65.9928



56.4628, 58.6115, 70.0015

Rectangle

The Rectangle color scheme consists of four colors that form a rectangle on the color wheel.



57.8277, 58.6115, 61.6914



56.4821, 58.6115, 58.0284



53.6417, 58.6115, 65.9928



54.9420, 58.6115, 69.9803

Sweetspot

The Sweet Spot groups the original color and five complimentary colors.



57.8293, 58.6141, 61.6927



92.6346, 96.4657, 104.0977



59.6457, 59.3393, 71.2615



19.8529, 20.6846, 22.3315



0.0000, 0.0000, 0.0000



20.3446, 21.4041, 23.3091

Same Dimension

The Same Dimension uses a secret algorithm to generate beautiful new colors.



57.8293, 58.6141, 61.6927



85.7730, 86.4257, 90.4557



59.5855, 62.1264, 62.2781



12.4235, 12.4213, 12.9035



16.7624, 8.6420, 0.7846



1.0111, 0.5214, 0.0474

Inverse Universe

The Inverse Universe completely reimagines the original color for something new.



59.0931, 64.3973, 72.2669



87.9374, 96.3310, 108.5667



57.2509, 60.7130, 71.6529



12.7920, 14.1074, 15.9863



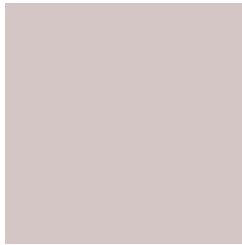
21.8632, 31.9881, 43.4752



1.3188, 1.9295, 2.6222

Previews

White Background



This preview shows how the XYZ color 57.8277, 58.6115, 61.6914 looks on a white background.

Color Contrast Check

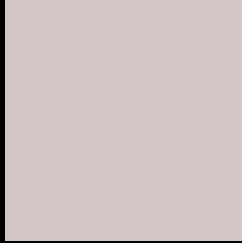
Large Text (above 18pt) WCAG AA × Fail

Any Text WCAG AA × Fail

Large Text (above 18pt) WCAG AAA × Fail

Any Text WCAG AAA × Fail

Black Background



This preview shows how the XYZ color 57.8277, 58.6115, 61.6914 looks on a black background.

Color Contrast Check

Large Text (above 18pt) WCAG AA ✓ Pass

Any Text WCAG AA ✓ Pass

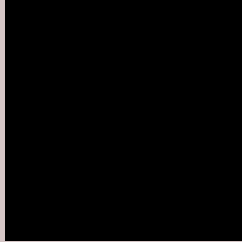
Large Text (above 18pt) WCAG AAA ✓ Pass

Any Text WCAG AAA ✓ Pass

If you want to check with other color combinations, try the [Color Contrast Checker](#).

XYZ 57.8277, 58.6115, 61.6914

Background



This preview shows how black text looks on a background with the XYZ color 57.8277, 58.6115, 61.6914.



This preview shows how white text looks on a background with the XYZ color 57.8277, 58.6115,

61.6914.

Color Blindness Simulation

Color vision deficiency is a very complex topic, and I could not describe the different causes any better than Wikipedia does, so if you want to learn more, you should check out their [article about color blindness](#).

Dichromacy



Original Color

57.8277, 58.6115, 61.6914

Protanopia

56.1399, 58.4112, 62.3484

Deuteranopia

59.9481, 58.6833, 62.2002



Tritanopia

59.5221, 58.6301, 69.8076

Trichromacy



Original Color

57.8277, 58.6115, 61.6914

Protanomaly

56.7447, 58.3803, 62.3106

Deuteranomaly

59.2621, 58.6634, 62.2326

Tritanomaly

58.8384, 58.6849, 66.6187

Monochromacy



Original Color

57.8277, 58.6115, 61.6914

Achromatopsia

56.1383, 59.0619, 64.3184

Achromatomaly

56.8829, 59.1121, 63.6701

CSS Examples

Text

The CSS property to change the color of the text to XYZ 57.8277, 58.6115, 61.6914 is called "color". The color property can be set on classes, ids or directly on the HTML element.

This example shows how text in the color rgb(213, 198, 198) looks like.

```
.text, #text, p{  
    color:rgb(213, 198, 198)  
}
```

If you want to add a text shadow in that color use the text-shadow property, you can generate a text shadow directly with our [CSS Text Shadow Generator](#).

Here you see how black text with a 4 pixel rgb(213, 198, 198) colored shadow looks like.

```
.shadow{ text-shadow: 4px 4px 2px rgb(213, 198, 198) }
```

Border

The CSS property to change the border of an element to XYZ 57.8277, 58.6115, 61.6914 is called "border". The border property can be set on classes, ids or directly on the HTML element.

This example shows the color as border, it can be applied via the CSS property "border" or "border-color".

```
.border, #border, table{ border:4px solid rgb(213, 198, 198) }
```


If only the border color should be changed use the property `border-color`.

```
.border{ border-color:rgb(213, 198, 198) }
```

If you want to add a box shadow in that color use:

Here you see how a box with a 4 pixel `rgb(213, 198, 198)` colored shadow looks like.

```
.boxshadow{ -moz-box-shadow:4px 4px 4px  
4px rgb(213, 198, 198); -webkit-box-  
shadow:4px 4px 4px 4px rgb(213, 198, 198);  
box-shadow:4px 4px 4px 4px rgb(213, 198,  
198) }
```

Background

The CSS property to change the background color of an element to XYZ 57.8277, 58.6115, 61.6914 is called "background". The background property can be set on classes, ids or directly on the HTML element.

```
.background, #background, body{  
background: rgb(213, 198, 198) }
```

If only the background color should be changed can be used:

```
.background{ background-color: rgb(213,  
198, 198) }
```

This example shows the color as background, it is applied via the CSS property "background".

To optimize and compress your CSS code, you can use our [online CSS compressor and optimizer](#) based on csstidy. If you want to create a linear or radial gradient as background or border, check our [CSS Gradient Generator](#).

Hey! You found this booklet interesting? Support Converting Colors with the new Membership Option!

The pro membership hides all ads, plus gives you double the colors in the color bucket, and more awesome pro features!

[Learn more, Memberships starting at \\$2.50/m!](#)

**Follow me
on Twitter!**

@ConvertingColor