

# Converting Colors

XYZ(57.9223, 56.3529, 60.6477)

Have a look what the booklet for  
XYZ(57.9223, 56.3529, 60.6477)  
contains.

<b>XYZ(57.9223, 56.3529, 60.6477)</b> .....	3
<i><b>Conversions</b></i> .....	4
<i><b>Details</b></i> .....	6
<i><b>Harmonies</b></i> .....	12
<i><b>Previews</b></i> .....	24
<i><b>Color Blindness Simulation</b></i> .....	28
<i><b>CSS Examples</b></i> .....	31

# Color

**XYZ(57.9223, 56.3529,  
60.6477)**

# Conversions

## Conversions Part 1

Format	Color
Hex	DBBFC5
RGB	219, 191, 197
RGB Percent	86%, 75%, 77%
CMY	0.1412, 0.2510, 0.2274
CMYK	0.00, 0.13, 0.10, 0.14
HSL	347°, 28%, 80%
HSV	347°, 13%, 86%
XYZ	57.9223, 56.3529, 60.6477
YIQ	200.0560, 14.7620, 7.8020

# Conversions

## Conversions Part 2

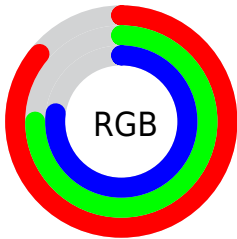
Format	Color
R <sub>Y</sub> B	219, 191, 197
Decimal	14401477
CIE Lab	79.81, 10.92, 0.64
CIE LCh	80, 10.935, 3.358
Yxy	56.3529, 0.3311, 0.3222
Android (android.graphics.Color)	4292591557 (0xFFDDBBFC5)
YUV	200.0560, -1.5066, 16.6139
Hunter-Lab	75.0686, 6.3592, 4.6478

# Details

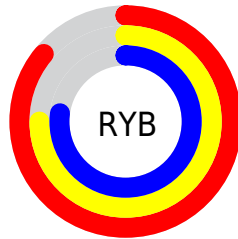
The XYZ color **57.9223, 56.3529, 60.6477** is a light color, and the websafe version is hex **CCCCCC**. A complement of this color would be **58.8298, 66.5450, 72.6979**, and the grayscale version is **54.9382, 57.7992, 62.9433**.

A 20% lighter version of the original color is **92.3902, 94.9373, 107.2212**, and **29.3562, 28.0526, 29.8541** is the 20% darker color. If you saturate the color by 10%, you get **51.6383, 46.7621, 49.3733**, and if you desaturate by 10%, it is **65.1488, 67.4669, 73.3484**.

# Distribution



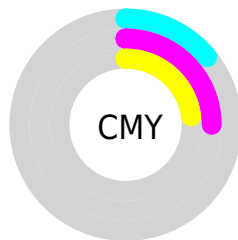
- Red (86%)
- Green (75%)
- Blue (77%)



- Red (86%)
- Yellow (75%)
- Blue (77%)



- Cyan (0%)
- Magenta (13%)
- Yellow (10%)
- Black (14%)



- Cyan (14%)
- Magenta (25%)
- Yellow (23%)

# Brightness & Saturation Gradients

These gradients show how the XYZ color 57.9223, 56.3529, 60.6477 changes by changing the brightness by 10 percent. The first figure shows a shift by +10% for each color and the second figure -10%.

Similar to the brightness gradients but the following saturation gradients show a change of the XYZ color 57.9223, 56.3529, 60.6477 by changing the saturation by 10% instead.



57.9223, 56.3529,  
60.6477

57.9223, 56.3529,  
60.6477

406.8549,  
411.0201, 444.8518

41.9892, 40.4859,  
43.5122

100.9333, 99.5204,  
107.3212

29.2839, 27.9176,  
29.9528

128.7419,  
127.5897, 137.6963

19.4411, 18.2636,  
19.5510

161.2398,  
160.4952, 173.3217

12.0953, 11.1394,  
11.8883

198.7922,  
198.6213, 214.6159

6.8813, 6.1607,  
6.5460

241.7646,  
242.3525, 261.9975

3.4336, 2.9430,  
3.1058

290.5223,

1.3870, 1.1021,

292.0731, 315.8850

1.1489

345.4306,  
348.1675, 376.6969

■ 0.2469, 0.0000,  
0.0000

■ 0.0000, 0.0000,  
0.0000

■ 57.9223, 56.3529,  
60.6477

■ 57.9223, 56.3529,  
60.6477

■ 51.6383, 46.7621,  
49.3733

■ 65.1488, 67.4669,  
73.3484

■ 46.2529, 38.6209,  
39.4712

■ 73.3497, 80.1589,  
87.5193

■ 41.7257, 31.8606,  
30.8895

■ 82.0150, 93.3967,  
103.0250

■ 38.0114, 26.4043,  
23.5715

■ 83.0237, 93.8002,  
108.3372

■ 35.0605, 22.1671,  
17.4563

■ 32.8179, 19.0542,  
12.4777

■ 31.2206, 16.9569,  
8.5628

■ 30.1940, 15.7442,  
5.6295

■ 29.7249, 15.2647,  
4.0591

# Harmonies

## Analogous

The Analogous color harmony consists of three colors that are next to each other on the color wheel.



57.4553, 56.3529, 66.9863



57.9223, 56.3529, 60.6477



57.1946, 56.3529, 54.8995

# Triad

The Triadic color harmony groups three colors that are evenly spaced from another and form a triangle on the color wheel.



57.9223, 56.3529, 60.6477



51.2561, 56.3529, 51.7337



51.6765, 56.3529, 72.9070

# Complementary

The Complementary color scheme is a pair of colors which are on the opposite of each other on the color wheel.



57.9223, 56.3529, 60.6477



58.8298, 66.5450, 72.6979

# Split Complementary

Split-complementary colors differ from the complementary color scheme. The scheme consists of three colors, the original color and two neighbors of the complement color.



50.0861, 56.3529, 68.3057



57.9223, 56.3529, 60.6477



49.8481, 56.3529, 56.0555

# Square

The Square scheme is like the rectangle color scheme, but the four colors are evenly spaced on the color wheel.



57.9223, 56.3529, 60.6477



53.3129, 56.3529, 49.9809



49.4257, 56.3529, 62.0753



53.8114, 56.3529, 74.3442



# Rectangle

The Rectangle color scheme consists of four colors that form a rectangle on the color wheel.



57.9223, 56.3529, 60.6477



56.1413, 56.3529, 52.0919



49.4257, 56.3529, 62.0753



51.0625, 56.3529, 71.6642

# Sweetspot

The Sweet Spot groups the original color and five complimentary colors.



57.9239, 56.3554, 60.6489



90.6181, 93.1583, 101.1885



58.8401, 56.5149, 74.8258



19.2230, 19.6730, 21.3562



0.0000, 0.0000, 0.0000



20.3446, 21.4041, 23.3091



# Same Dimension

The Same Dimension uses a secret algorithm to generate beautiful new colors.



57.9239, 56.3554, 60.6489



79.5712, 76.1900, 81.7052



59.0273, 59.6401, 57.6938



13.1696, 13.0969, 14.1544



17.6583, 9.0644, 2.5806



1.1761, 0.6001, 0.3361



# Inverse Universe

The Inverse Universe completely reimagines the original color for something new.



57.9239, 56.3554, 60.6489



79.5712, 76.1900, 81.7052



57.5849, 62.8144, 76.1079



13.1696, 13.0969, 14.1544



17.6583, 9.0644, 2.5806

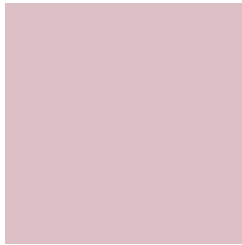


1.1761, 0.6001, 0.3361



# Previews

## White Background



This preview shows how the XYZ color 57.9223, 56.3529, 60.6477 looks on a white background.

## Color Contrast Check

Large Text (above 18pt) WCAG AA × Fail

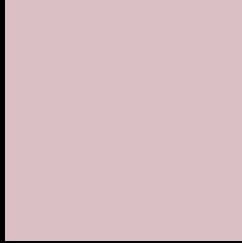
Any Text WCAG AA × Fail

Large Text (above 18pt) WCAG AAA × Fail

Any Text WCAG AAA × Fail



# Black Background



This preview shows how the XYZ color 57.9223, 56.3529, 60.6477 looks on a black background.

## Color Contrast Check

Large Text (above 18pt) WCAG AA ✓ Pass

Any Text WCAG AA ✓ Pass

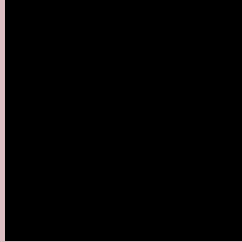
Large Text (above 18pt) WCAG AAA ✓ Pass

Any Text WCAG AAA ✓ Pass

If you want to check with other color combinations, try the [Color Contrast Checker](#).

**XYZ 57.9223, 56.3529, 60.6477**

## **Background**



This preview shows how black text looks on a background with the XYZ color 57.9223, 56.3529, 60.6477.



This preview shows how white text looks on a background with the XYZ color 57.9223, 56.3529,



# Color Blindness Simulation

Color vision deficiency is a very complex topic, and I could not describe the different causes any better than Wikipedia does, so if you want to learn more, you should check out their [article about color blindness](#).

## Dichromacy



### Original Color

57.9223, 56.3529, 60.6477

### Protanopia

54.4790, 56.5201, 62.6817

### Deuteranopia

57.5430, 56.4822, 60.6926



## Tritanopia

58.9481, 56.4503, 65.5467

# Trichromacy



## Original Color

57.9223, 56.3529, 60.6477

## Protanomaly

55.8363, 56.5636, 62.0078

## Deuteranomaly

57.8411, 56.6359, 60.7066

## Tritanomaly

58.5893, 56.3068, 63.6574

# Monochromacy



## Original Color

57.9223, 56.3529, 60.6477

## Achromatopsia

54.8990, 57.7580, 62.8985

## Achromatomaly

56.0072, 57.3214, 62.1451

# CSS Examples

## Text

The CSS property to change the color of the text to XYZ 57.9223, 56.3529, 60.6477 is called "color". The color property can be set on classes, ids or directly on the HTML element.

This example shows how text in the color `rgb(219, 191, 197)` looks like.

```
.text, #text, p{  
    color:rgb(219, 191, 197)  
}
```

If you want to add a text shadow in that color use the text-shadow property, you can generate a text shadow directly with our [CSS Text Shadow Generator](#).

Here you see how black text with a 4 pixel rgb(219, 191, 197) colored shadow looks like.

```
.shadow{ text-shadow: 4px 4px 2px rgb(219, 191, 197) }
```

## Border

The CSS property to change the border of an element to XYZ 57.9223, 56.3529, 60.6477 is called "border". The border property can be set on classes, ids or directly on the HTML element.

This example shows the color as border, it can be applied via the CSS property "border" or "border-color".

```
.border, #border, table{ border:4px solid rgb(219, 191, 197) }
```



If only the border color should be changed use the property `border-color`.

```
.border{ border-color:rgb(219, 191, 197) }
```

If you want to add a box shadow in that color use:

Here you see how a box with a 4 pixel `rgb(219, 191, 197)` colored shadow looks like.

```
.boxshadow{ -moz-box-shadow:4px 4px 4px 4px rgb(219, 191, 197); -webkit-box-shadow:4px 4px 4px 4px rgb(219, 191, 197); box-shadow:4px 4px 4px 4px rgb(219, 191, 197) }
```

# Background

The CSS property to change the background color of an element to XYZ 57.9223, 56.3529, 60.6477 is called "background". The background property can be set on classes, ids or directly on the HTML element.

```
.background, #background, body{  
background: rgb(219, 191, 197) }
```

If only the background color should be changed can be used:

```
.background{ background-color: rgb(219,  
191, 197) }
```

This example shows the color as background, it is applied via the CSS property "background".

To optimize and compress your CSS code, you can use our [online CSS compressor and optimizer](#) based on csstidy. If you want to create a linear or radial gradient as background or border, check our [CSS Gradient Generator](#).

Hey! You found this booklet interesting? Support Converting Colors with the new Membership Option!

The pro membership hides all ads, plus gives you double the colors in the color bucket, and more awesome pro features!

**[Learn more, Memberships starting at \\$2.50/m!](#)**

**Follow me  
on Twitter!**

@ConvertingColor