

Converting Colors

XYZ(57.9561, 56.6819, 61.3122)

Have a look what the booklet for
XYZ(57.9561, 56.6819, 61.3122)
contains.

XYZ(57.9561, 56.6819, 61.3122)	3
<i>Conversions</i>	4
<i>Details</i>	6
<i>Harmonies</i>	12
<i>Previews</i>	24
<i>Color Blindness Simulation</i>	28
<i>CSS Examples</i>	31

Color

**XYZ(57.9561, 56.6819,
61.3122)**

Conversions

Conversions Part 1

Format	Color
Hex	DAC0C6
RGB	218, 192, 198
RGB Percent	85%, 75%, 78%
CMY	0.1451, 0.2470, 0.2235
CMYK	0.00, 0.12, 0.09, 0.15
HSL	346°, 26%, 80%
HSV	346°, 12%, 85%
XYZ	57.9561, 56.6819, 61.3122
YIQ	200.4580, 13.5700, 7.3780

Conversions

Conversions Part 2

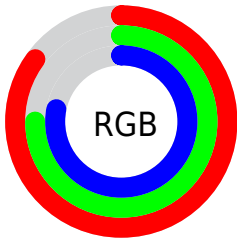
Format	Color
R _Y B	218, 192, 198
Decimal	14336198
CIE Lab	80.00, 10.20, 0.36
CIE LCh	80, 10.203, 2.037
Yxy	56.6819, 0.3294, 0.3221
Android (android.graphics.Color)	4292526278 (0xFFDAC0C6)
YUV	200.4580, -1.2118, 15.3843
Hunter-Lab	75.2874, 5.6561, 4.4168

Details

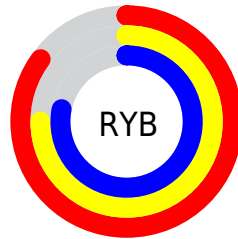
The XYZ color **57.9561, 56.6819, 61.3122** is a light color, and the websafe version is hex **CCCCCC**. A complement of this color would be **58.6954, 66.1041, 71.9563**, and the grayscale version is **55.1848, 58.0587, 63.2259**.

A 20% lighter version of the original color is **92.8574, 95.6148, 108.1691**, and **29.3709, 28.2654, 30.2933** is the 20% darker color. If you saturate the color by 10%, you get **51.6910, 47.0776, 50.2022**, and if you desaturate by 10%, it is **65.1476, 67.7948, 73.7893**.

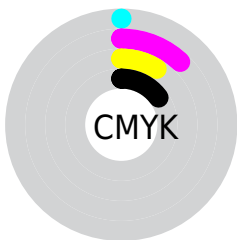
Distribution



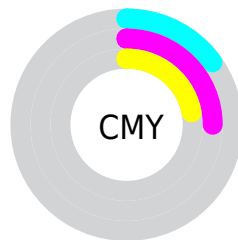
- Red (85%)
- Green (75%)
- Blue (78%)



- Red (85%)
- Yellow (75%)
- Blue (78%)



- Cyan (0%)
- Magenta (12%)
- Yellow (9%)
- Black (15%)





- Cyan (15%)
- Magenta (25%)
- Yellow (22%)

Brightness & Saturation Gradients


These gradients show how the XYZ color 57.9561, 56.6819, 61.3122 changes by changing the brightness by 10 percent. The first figure shows a shift by +10% for each color and the second figure -10%.


Similar to the brightness gradients but the following saturation gradients show a change of the XYZ color 57.9561, 56.6819, 61.3122 by changing the saturation by 10% instead.


 57.9561, 56.6819,
61.3122

 57.9561, 56.6819,
61.3122


406.9788,
412.2563, 447.3560

 42.0165, 40.7499,
44.0450


 100.9823,
100.0009, 108.2928

 29.3054, 28.1237,
30.3684


128.7995,
128.1567, 138.8432

 19.4574, 18.4189,
19.8640


161.3067,
161.1558, 174.6585

 12.1072, 11.2512,
12.1131

198.8691,
199.3828, 216.1571

 6.8894, 6.2360,
6.6973

241.8522,
243.2219, 263.7576

 3.4388, 2.9891,
3.1980

290.6213,

 1.3898, 1.1261,

293.0576, 317.8786

1.1966

345.5417,
349.2743, 378.9385

■ 0.2490, 0.0000,
0.0000

■ 0.0000, 0.0000,
0.0000

■ 57.9561, 56.6819,
61.3122

■ 57.9561, 56.6819,
61.3122

■ 51.6910, 47.0776,
50.2022

■ 65.1476, 67.7948,
73.7893

■ 46.3096, 38.9096,
40.4088

■ 73.2966, 80.4698,
87.6744

■ 41.7727, 32.1107,
31.8833

■ 81.6661, 93.2225,
102.7540

■ 38.0364, 26.6054,
24.5731

■ 82.7237, 93.6456,
108.3231

■ 35.0528, 22.3110,
18.4213

■ 32.7684, 19.1350,
13.3666

■ 31.1228, 16.9714,
9.3416

■ 30.0442, 15.6937,
6.2706

■ 29.4956, 15.1383,
4.4173

Harmonies

Analogous

The Analogous color harmony consists of three colors that are next to each other on the color wheel.



57.4716, 56.6819, 67.2249



57.9561, 56.6819, 61.3122



57.3239, 56.6819, 55.8584

Triad

The Triadic color harmony groups three colors that are evenly spaced from another and form a triangle on the color wheel.



57.9561, 56.6819, 61.3122



51.7880, 56.6819, 52.5385



52.0273, 56.6819, 72.3566

Complementary

The Complementary color scheme is a pair of colors which are on the opposite of each other on the color wheel.



57.9561, 56.6819, 61.3122



58.6954, 66.1041, 71.9563

Split Complementary

Split-complementary colors differ from the complementary color scheme. The scheme consists of three colors, the original color and two neighbors of the complement color.



50.5663, 56.6819, 67.9715



57.9561, 56.6819, 61.3122



50.4306, 56.6819, 56.5184

Square

The Square scheme is like the rectangle color scheme, but the four colors are evenly spaced on the color wheel.



57.9561, 56.6819, 61.3122



53.7329, 56.6819, 50.9990



49.9891, 56.6819, 62.1235



54.0162, 56.6819, 73.8402

Rectangle

The Rectangle color scheme consists of four colors that form a rectangle on the color wheel.



57.9561, 56.6819, 61.3122



56.3634, 56.6819, 53.1488



49.9891, 56.6819, 62.1235



51.4599, 56.6819, 71.1597

Sweetspot

The Sweet Spot groups the original color and five complimentary colors.



57.9577, 56.6844, 61.3134



90.6440, 93.1687, 101.3252



58.6385, 56.7510, 74.1938



19.2295, 19.6756, 21.3907



0.0000, 0.0000, 0.0000



20.3446, 21.4041, 23.3091

Same Dimension

The Same Dimension uses a secret algorithm to generate beautiful new colors.



57.9577, 56.6844, 61.3134



80.5889, 77.6553, 83.8020



58.8377, 59.5296, 58.2615



13.1785, 13.1005, 14.2011



17.7051, 9.0831, 2.8272



1.1803, 0.6017, 0.3582

Inverse Universe

The Inverse Universe completely reimagines the original color for something new.



57.9577, 56.6844, 61.3134



80.5889, 77.6553, 83.8020



57.7059, 62.8918, 75.4282



13.1785, 13.1005, 14.2011



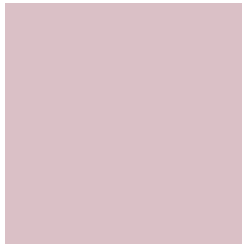
17.7051, 9.0831, 2.8272



1.1803, 0.6017, 0.3582

Previews

White Background



This preview shows how the XYZ color 57.9561, 56.6819, 61.3122 looks on a white background.

Color Contrast Check

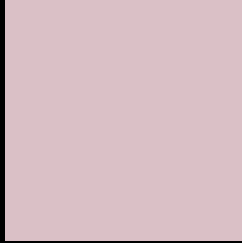
Large Text (above 18pt) WCAG AA × Fail

Any Text WCAG AA × Fail

Large Text (above 18pt) WCAG AAA × Fail

Any Text WCAG AAA × Fail

Black Background



This preview shows how the XYZ color 57.9561, 56.6819, 61.3122 looks on a black background.

Color Contrast Check

Large Text (above 18pt) WCAG AA ✓ Pass

Any Text WCAG AA ✓ Pass

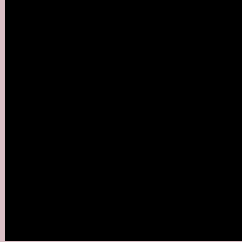
Large Text (above 18pt) WCAG AAA ✓ Pass

Any Text WCAG AAA ✓ Pass

If you want to check with other color combinations, try the [Color Contrast Checker](#).

XYZ 57.9561, 56.6819, 61.3122

Background



This preview shows how black text looks on a background with the XYZ color 57.9561, 56.6819, 61.3122.



This preview shows how white text looks on a background with the XYZ color 57.9561, 56.6819,

61.3122.

Color Blindness Simulation

Color vision deficiency is a very complex topic, and I could not describe the different causes any better than Wikipedia does, so if you want to learn more, you should check out their [article about color blindness](#).

Dichromacy



Original Color

57.9561, 56.6819, 61.3122

Protanopia

54.5963, 56.5671, 63.2993

Deuteranopia

57.9561, 56.6819, 61.3122



Tritanopia

58.9848, 56.7779, 66.2429

Trichromacy



Original Color

57.9561, 56.6819, 61.3122

Protanomaly

55.6726, 56.4657, 62.6083

Deuteranomaly

57.9561, 56.6819, 61.3122

Tritanomaly

58.6237, 56.6335, 64.3415

Monochromacy



Original Color

57.9561, 56.6819, 61.3122

Achromatopsia

54.8990, 57.7580, 62.8985

Achromatomaly

56.0072, 57.3214, 62.1451

CSS Examples

Text

The CSS property to change the color of the text to XYZ 57.9561, 56.6819, 61.3122 is called "color". The color property can be set on classes, ids or directly on the HTML element.

This example shows how text in the color rgb(218, 192, 198) looks like.

```
.text, #text, p{  
    color:rgb(218, 192, 198)  
}
```

If you want to add a text shadow in that color use the text-shadow property, you can generate a text shadow directly with our [CSS Text Shadow Generator](#).

Here you see how black text with a 4 pixel rgb(218, 192, 198) colored shadow looks like.

```
.shadow{ text-shadow: 4px 4px 2px rgb(218, 192, 198) }
```

Border

The CSS property to change the border of an element to XYZ 57.9561, 56.6819, 61.3122 is called "border". The border property can be set on classes, ids or directly on the HTML element.

This example shows the color as border, it can be applied via the CSS property "border" or "border-color".

```
.border, #border, table{ border:4px solid rgb(218, 192, 198) }
```


If only the border color should be changed use the property `border-color`.

```
.border{ border-color:rgb(218, 192, 198) }
```

If you want to add a box shadow in that color use:

Here you see how a box with a 4 pixel `rgb(218, 192, 198)` colored shadow looks like.

```
.boxshadow{ -moz-box-shadow:4px 4px 4px 4px rgb(218, 192, 198); -webkit-box-shadow:4px 4px 4px 4px rgb(218, 192, 198); box-shadow:4px 4px 4px 4px rgb(218, 192, 198) }
```

Background

The CSS property to change the background color of an element to XYZ 57.9561, 56.6819, 61.3122 is called "background". The background property can be set on classes, ids or directly on the HTML element.

```
.background, #background, body{  
background: rgb(218, 192, 198) }
```

If only the background color should be changed can be used:

```
.background{ background-color: rgb(218,  
192, 198) }
```

This example shows the color as background, it is applied via the CSS property "background".

To optimize and compress your CSS code, you can use our [online CSS compressor and optimizer](#) based on csstidy. If you want to create a linear or radial gradient as background or border, check our [CSS Gradient Generator](#).

Hey! You found this booklet interesting? Support Converting Colors with the new Membership Option!

The pro membership hides all ads, plus gives you double the colors in the color bucket, and more awesome pro features!

[Learn more, Memberships starting at \\$2.50/m!](#)

**Follow me
on Twitter!**

@ConvertingColor