

Converting Colors

XYZ(58.1062, 52.0865, 56.1196)

Have a look what the booklet for
XYZ(58.1062, 52.0865, 56.1196)
contains.

XYZ(58.0811, 52.1948, 56.3036)	3
<i>Conversions</i>	4
<i>Details</i>	6
<i>Harmonies</i>	12
<i>Previews</i>	24
<i>Color Blindness Simulation</i>	28
<i>CSS Examples</i>	31

Color

**XYZ(58.0811, 52.1948,
56.3036)**

Conversions

Conversions Part 1

Format	Color
Hex	E7B1BF
RGB	231, 177, 191
RGB Percent	91%, 69%, 75%
CMY	0.0941, 0.3059, 0.2510
CMYK	0.00, 0.23, 0.17, 0.09
HSL	344°, 53%, 80%
HSV	344°, 23%, 91%
XYZ	58.0811, 52.1948, 56.3036
YIQ	194.7420, 27.6900, 15.8020

Conversions

Conversions Part 2

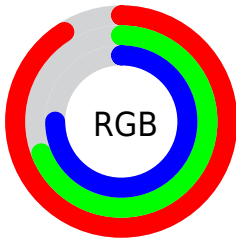
Format	Color
R _Y B	231, 177, 191
Decimal	15184319
CIE Lab	77.40, 21.72, 0.50
CIE LCh	77, 21.728, 1.318
Yxy	52.1948, 0.3487, 0.3133
Android (android.graphics.Color)	4293374399 (0xFFE7B1BF)
YUV	194.7420, -1.8448, 31.7983
Hunter-Lab	72.2460, 17.0720, 4.3656

Details

The XYZ color **58.0811, 52.1948, 56.3036** is a light color, and the websafe version is hex **FFCCCC**. A complement of this color would be **59.2339, 71.5100, 76.3300**, and the grayscale version is **51.7186, 54.4120, 59.2546**.

A 20% lighter version of the original color is **87.1674, 86.2532, 100.0500**, and **29.4743, 25.3642, 27.3871** is the 20% darker color. If you saturate the color by 10%, you get **52.1244, 43.1207, 45.5634**, and if you desaturate by 10%, it is **65.0331, 62.9062, 68.4624**.

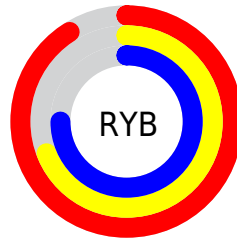
Distribution



Red (91%)

Green (69%)

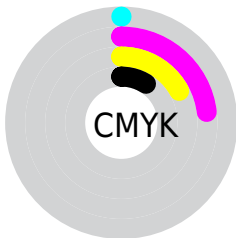
Blue (75%)



Red (91%)

Yellow (69%)

Blue (75%)

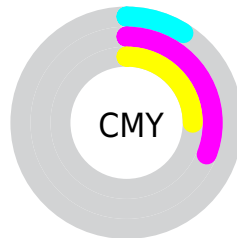


Cyan (0%)

Magenta (23%)

Yellow (17%)

Black (9%)



Cyan (9%)

Magenta (31%)

Yellow (25%)

Brightness & Saturation Gradients

These gradients show how the XYZ color 58.0811, 52.1948, 56.3036 changes by changing the brightness by 10 percent. The first figure shows a shift by +10% for each color and the second figure -10%.

Similar to the brightness gradients but the following saturation gradients show a change of the XYZ color 58.0811, 52.1948, 56.3036 by changing the saturation by 10% instead.

■ 58.0811, 52.1948,
56.3036

■ 58.0811, 52.1948,
56.3036

407.4371,
395.1882, 428.2551

■ 42.1174, 37.1604,
40.0408

■ 101.1632, 93.4185,
100.9386

■ 29.3847, 25.3317,
27.2563

129.0123,
120.3765, 130.1477

■ 19.5178, 16.3243,
17.5317

161.5540,
152.0778, 164.5095

■ 12.1512, 9.7540,
10.4483

199.1534,
188.9069, 204.4423

■ 6.9197, 5.2361,
5.5877

242.1761,
231.2481, 250.3647

■ 3.4578, 2.3865,
2.5314

290.9874,

■ 1.4002, 0.8189,

279.4857, 302.6953

0.8567

345.9526,
334.0043, 361.8526

■ 0.2564, 0.0000,
0.0000

■ 0.0000, 0.0000,
0.0000

■ 58.0811, 52.1948,
56.3036

■ 58.0811, 52.1948,
56.3036

■ 52.1244, 43.1207,
45.5634

■ 65.0331, 62.9062,
68.4624

■ 47.1121, 35.5961,
36.1858

■ 73.0194, 75.3230,
82.0863

■ 42.9956, 29.5357,
28.1159

■ 82.0820, 89.5180,
97.2239

■ 39.7198, 24.8429,
21.2936

■ 86.7652, 95.7290,
108.5123

■ 37.2235, 21.4097,
15.6537

■ 35.4363, 19.1113,
11.1247

■ 34.2746, 17.7970,
7.6259

■ 33.7675, 17.3140,
5.8199

Harmonies

Analogous

The Analogous color harmony consists of three colors that are next to each other on the color wheel.



56.9955, 52.1948, 68.6025



58.0811, 52.1948, 56.3036



56.7930, 52.1948, 45.6927

Triad

The Triadic color harmony groups three colors that are evenly spaced from another and form a triangle on the color wheel.



58.0811, 52.1948, 56.3036



45.5504, 52.1948, 39.3569



45.8534, 52.1948, 79.4965

Complementary

The Complementary color scheme is a pair of colors which are on the opposite of each other on the color wheel.



58.0811, 52.1948, 56.3036



59.2339, 71.5100, 76.3300

Split Complementary

Split-complementary colors differ from the complementary color scheme. The scheme consists of three colors, the original color and two neighbors of the complement color.



43.0590, 52.1948, 69.6472



58.0811, 52.1948, 56.3036



42.8910, 52.1948, 46.4900

Square

The Square scheme is like the rectangle color scheme, but the four colors are evenly spaced on the color wheel.



58.0811, 52.1948, 56.3036



49.4250, 52.1948, 36.7956



42.0047, 52.1948, 57.3622



49.7946, 52.1948, 83.0716

Rectangle

The Rectangle color scheme consists of four colors that form a rectangle on the color wheel.



58.0811, 52.1948, 56.3036



54.8011, 52.1948, 40.6983



42.0047, 52.1948, 57.3622



44.7568, 52.1948, 76.7473

Sweetspot

The Sweet Spot groups the original color and five complimentary colors.



58.0826, 52.1972, 56.3047



87.5611, 88.3127, 96.2598



58.6442, 51.9069, 82.5299



18.6101, 18.6978, 20.3796



0.0000, 0.0000, 0.0000



20.3446, 21.4041, 23.3091

Same Dimension

The Same Dimension uses a secret algorithm to generate beautiful new colors.



58.0826, 52.1972, 56.3047



68.9709, 59.6444, 63.8209



59.2195, 56.8194, 49.4439



14.5296, 14.4290, 15.7230



18.9735, 9.7236, 3.4893



1.4393, 0.7334, 0.4539

Inverse Universe

The Inverse Universe completely reimagines the original color for something new.



58.0826, 52.1972, 56.3047



68.9709, 59.6444, 63.8209



57.7324, 65.4688, 85.1957



14.5296, 14.4290, 15.7230



18.9735, 9.7236, 3.4893



1.4393, 0.7334, 0.4539

Previews

White Background



This preview shows how the XYZ color 58.0811, 52.1948, 56.3036 looks on a white background.

Color Contrast Check

Large Text (above 18pt) WCAG AA × Fail

Any Text WCAG AA × Fail

Large Text (above 18pt) WCAG AAA × Fail

Any Text WCAG AAA × Fail

Black Background



This preview shows how the XYZ color 58.0811, 52.1948, 56.3036 looks on a black background.

Color Contrast Check

Large Text (above 18pt) WCAG AA ✓ Pass

Any Text WCAG AA ✓ Pass

Large Text (above 18pt) WCAG AAA ✓ Pass

Any Text WCAG AAA ✓ Pass

If you want to check with other color combinations, try the [Color Contrast Checker](#).

XYZ 58.0811, 52.1948, 56.3036

Background



This preview shows how black text looks on a background with the XYZ color 58.0811, 52.1948, 56.3036.



This preview shows how white text looks on a background with the XYZ color 58.0811, 52.1948,

Color Blindness Simulation

Color vision deficiency is a very complex topic, and I could not describe the different causes any better than Wikipedia does, so if you want to learn more, you should check out their [article about color blindness](#).

Dichromacy



Original Color

58.0811, 52.1948, 56.3036

Protanopia

50.7146, 52.2879, 61.4525

Deuteranopia

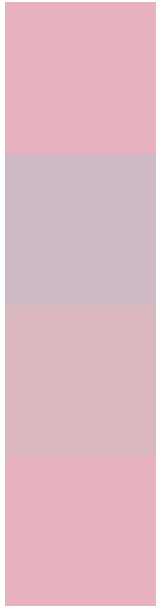
53.3982, 52.2209, 55.4094



Tritanopia

58.0811, 52.1948, 56.3036

Trichromacy



Original Color

58.0811, 52.1948, 56.3036

Protanomaly

53.0449, 51.9488, 59.4559

Deuteranomaly

54.9357, 52.0790, 55.8720

Tritanomaly

58.0811, 52.1948, 56.3036

Monochromacy



Original Color

58.0811, 52.1948, 56.3036

Achromatopsia

51.8711, 54.5724, 59.4294

Achromatomaly

53.7332, 53.2714, 58.4893

CSS Examples

Text

The CSS property to change the color of the text to XYZ 58.0811, 52.1948, 56.3036 is called "color". The color property can be set on classes, ids or directly on the HTML element.

This example shows how text in the color `rgb(231, 177, 191)` looks like.

```
.text, #text, p{  
    color:rgb(231, 177, 191)  
}
```

If you want to add a text shadow in that color use the text-shadow property, you can generate a text shadow directly with our [CSS Text Shadow Generator](#).

Here you see how black text with a 4 pixel rgb(231, 177, 191) colored shadow looks like.

```
.shadow{ text-shadow: 4px 4px 2px rgb(231, 177, 191) }
```

Border

The CSS property to change the border of an element to XYZ 58.0811, 52.1948, 56.3036 is called "border". The border property can be set on classes, ids or directly on the HTML element.

This example shows the color as border, it can be applied via the CSS property "border" or "border-color".

```
.border, #border, table{ border:4px solid rgb(231, 177, 191) }
```


If only the border color should be changed use the property `border-color`.

```
.border{ border-color:rgb(231, 177, 191) }
```

If you want to add a box shadow in that color use:

Here you see how a box with a 4 pixel `rgb(231, 177, 191)` colored shadow looks like.

```
.boxshadow{ -moz-box-shadow:4px 4px 4px  
4px rgb(231, 177, 191); -webkit-box-  
shadow:4px 4px 4px 4px rgb(231, 177, 191);  
box-shadow:4px 4px 4px 4px rgb(231, 177,  
191) }
```

Background

The CSS property to change the background color of an element to XYZ 58.0811, 52.1948, 56.3036 is called "background". The background property can be set on classes, ids or directly on the HTML element.

```
.background, #background, body{  
background: rgb(231, 177, 191) }
```

If only the background color should be changed can be used:

```
.background{ background-color: rgb(231,  
177, 191) }
```

This example shows the color as background, it is applied via the CSS property "background".

To optimize and compress your CSS code, you can use our [online CSS compressor and optimizer](#) based on csstidy. If you want to create a linear or radial gradient as background or border, check our [CSS Gradient Generator](#).

Hey! You found this booklet interesting? Support Converting Colors with the new Membership Option!

The pro membership hides all ads, plus gives you double the colors in the color bucket, and more awesome pro features!

[Learn more, Memberships starting at \\$2.50/m!](#)

**Follow me
on Twitter!**

@ConvertingColor