

Converting Colors

XYZ(58.1125, 55.0488, 55.2759)

Have a look what the booklet for
XYZ(58.1125, 55.0488, 55.2759)
contains.

XYZ(58.0000, 54.9174, 55.1201)	3
<i>Conversions</i>	4
<i>Details</i>	6
<i>Harmonies</i>	12
<i>Previews</i>	24
<i>Color Blindness Simulation</i>	28
<i>CSS Examples</i>	31

Color

**XYZ(58.0000, 54.9174,
55.1201)**

Conversions

Conversions Part 1

Format	Color
Hex	E2BABC
RGB	226, 186, 188
RGB Percent	89%, 73%, 74%
CMY	0.1137, 0.2706, 0.2627
CMYK	0.00, 0.18, 0.17, 0.11
HSL	357°, 41%, 81%
HSV	357°, 18%, 89%
XYZ	58.0000, 54.9174, 55.1201
YIQ	198.1880, 23.1980, 9.1020

Conversions

Conversions Part 2

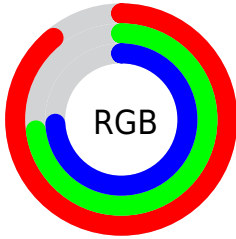
Format	Color
R _Y B	226, 186, 188
Decimal	14858940
CIE Lab	78.99, 14.64, 4.39
CIE LCh	79, 15.285, 16.672
Yxy	54.9174, 0.3452, 0.3268
Android (android.graphics.Color)	4293049020 (0xFFE2BABC)
YUV	198.1880, -5.0227, 24.3911
Hunter-Lab	74.1063, 10.0188, 7.7746

Details

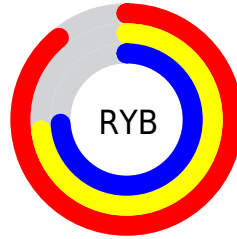
The XYZ color **58.0000, 54.9174, 55.1201** is a light color, and the websafe version is hex **FFCCCC**. A complement of this color would be **60.9028, 70.2149, 80.8674**, and the grayscale version is **53.8118, 56.6142, 61.6528**.

A 20% lighter version of the original color is **89.3213, 91.2959, 98.5021**, and **29.3383, 27.0704, 26.6005** is the 20% darker color. If you saturate the color by 10%, you get **51.4651, 45.2801, 42.3587**, and if you desaturate by 10%, it is **65.6354, 66.2034, 69.9487**.

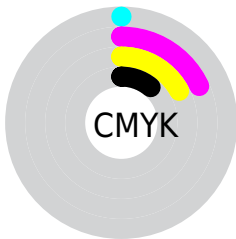
Distribution



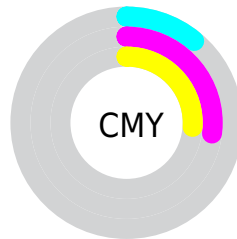
- Red (89%)
- Green (73%)
- Blue (74%)



- Red (89%)
- Yellow (73%)
- Blue (74%)



- Cyan (0%)
- Magenta (18%)
- Yellow (17%)
- Black (11%)





- Cyan (11%)
- Magenta (27%)
- Yellow (26%)

Brightness & Saturation Gradients


These gradients show how the XYZ color 58.0000, 54.9174, 55.1201 changes by changing the brightness by 10 percent. The first figure shows a shift by +10% for each color and the second figure -10%.


Similar to the brightness gradients but the following saturation gradients show a change of the XYZ color 58.0000, 54.9174, 55.1201 by changing the saturation by 10% instead.


 58.0000, 54.9174,
55.1201

 58.0000, 54.9174,
55.1201


407.1398,
405.5987, 423.6618

 42.0519, 39.3356,
39.0986


 101.0458, 97.4199,
99.1898

 29.3332, 27.0209,
26.5280


128.8743,
125.1094, 128.0751

 19.4786, 17.5889,
16.9898


161.3935,
157.6036, 162.0855

 12.1227, 10.6553,
10.0653

198.9690,
195.2869, 201.6395

 6.9001, 5.8355,
5.3361

241.9660,
238.5437, 247.1555

 3.4455, 2.7453,
2.3836

290.7499,

 1.3935, 1.0003,

287.7583, 299.0522

0.7775

345.6860,
343.3152, 357.7481

■ 0.2516, 0.0000,
0.0000

■ 0.0000, 0.0000,
0.0000

■ 58.0000, 54.9174,
55.1201

■ 58.0000, 54.9174,
55.1201

■ 51.4651, 45.2801,
42.3587

■ 65.6354, 66.2034,
69.9487

■ 45.9756, 37.2073,
31.5695

■ 74.4139, 79.2023,
86.9268

■ 41.4787, 30.6189,
22.6551

■ 84.3815, 93.9840,
106.1367

■ 37.9150, 25.4243,
15.5085

■ 85.1742, 94.9088,
108.4378

■ 35.2188, 21.5233,
10.0121

■ 33.3160, 18.8024,
6.0337

■ 32.1198, 17.1281,
3.4212

■ 31.5159, 16.3199,
1.9880

■ 31.4262, 16.1937,
1.7944

Harmonies

Analogous

The Analogous color harmony consists of three colors that are next to each other on the color wheel.



58.0948, 54.9174, 63.7388



58.0000, 54.9174, 55.1201



56.3122, 54.9174, 48.4252

Triad

The Triadic color harmony groups three colors that are evenly spaced from another and form a triangle on the color wheel.



58.0000, 54.9174, 55.1201



48.0594, 54.9174, 49.0279



50.8613, 54.9174, 77.6108

Complementary

The Complementary color scheme is a pair of colors which are on the opposite of each other on the color wheel.



58.0000, 54.9174, 55.1201



60.9028, 70.2149, 80.8674

Split Complementary

Split-complementary colors differ from the complementary color scheme. The scheme consists of three colors, the original color and two neighbors of the complement color.



48.2880, 54.9174, 72.8198



58.0000, 54.9174, 55.1201



46.7132, 54.9174, 56.0187

Square

The Square scheme is like the rectangle color scheme, but the four colors are evenly spaced on the color wheel.



58.0000, 54.9174, 55.1201



50.5381, 54.9174, 45.1489



46.7952, 54.9174, 64.7285



53.8925, 54.9174, 77.3103

Rectangle

The Rectangle color scheme consists of four colors that form a rectangle on the color wheel.



58.0000, 54.9174, 55.1201



54.5466, 54.9174, 45.7024



46.7952, 54.9174, 64.7285



49.9165, 54.9174, 76.5240

Sweetspot

The Sweet Spot groups the original color and five complimentary colors.



58.0015, 54.9199, 55.1212



89.2271, 91.3774, 97.6388



62.0283, 56.4586, 79.5803



18.9298, 19.3091, 20.5724



0.0000, 0.0000, 0.0000



20.3446, 21.4041, 23.3091

Same Dimension

The Same Dimension uses a secret algorithm to generate beautiful new colors.



58.0015, 54.9199, 55.1212



73.1454, 67.6089, 66.3982



61.8214, 62.9016, 55.3403



13.7348, 13.7116, 14.3738



17.9413, 9.2435, 1.0907



1.2535, 0.6447, 0.1278

Inverse Universe

The Inverse Universe completely reimagines the original color for something new.



58.0015, 54.9199, 55.1212



73.1454, 67.6089, 66.3982



56.5351, 61.0439, 80.7549



13.7348, 13.7116, 14.3738



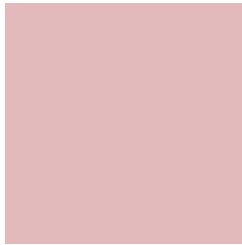
17.9413, 9.2435, 1.0907



1.2535, 0.6447, 0.1278

Previews

White Background



This preview shows how the XYZ color 58.0000, 54.9174, 55.1201 looks on a white background.

Color Contrast Check

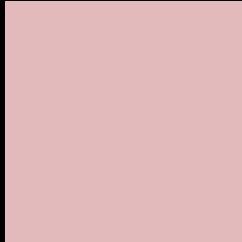
Large Text (above 18pt) WCAG AA × Fail

Any Text WCAG AA × Fail

Large Text (above 18pt) WCAG AAA × Fail

Any Text WCAG AAA × Fail

Black Background



This preview shows how the XYZ color 58.0000, 54.9174, 55.1201 looks on a black background.

Color Contrast Check

Large Text (above 18pt) WCAG AA ✓ Pass

Any Text WCAG AA ✓ Pass

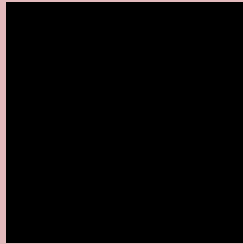
Large Text (above 18pt) WCAG AAA ✓ Pass

Any Text WCAG AAA ✓ Pass

If you want to check with other color combinations, try the [Color Contrast Checker](#).

XYZ 58.0000, 54.9174, 55.1201

Background



This preview shows how black text looks on a background with the XYZ color 58.0000, 54.9174, 55.1201.



This preview shows how white text looks on a background with the XYZ color 58.0000, 54.9174,

Color Blindness Simulation

Color vision deficiency is a very complex topic, and I could not describe the different causes any better than Wikipedia does, so if you want to learn more, you should check out their [article about color blindness](#).

Dichromacy



Original Color

58.0000, 54.9174, 55.1201

Protanopia

52.9602, 55.1598, 58.3077

Deuteranopia

56.0807, 54.8885, 54.6525



Tritanopia

59.1278, 54.7354, 61.4814

Trichromacy



Original Color

58.0000, 54.9174, 55.1201

Protanomaly

54.5481, 55.0162, 57.0344

Deuteranomaly

56.7717, 54.9264, 54.6234

Tritanomaly

58.8778, 54.9689, 59.1366

Monochromacy



Original Color

58.0000, 54.9174, 55.1201

Achromatopsia

53.6758, 56.4712, 61.4971

Achromatomaly

55.0418, 55.8885, 58.9255

CSS Examples

Text

The CSS property to change the color of the text to XYZ 58.0000, 54.9174, 55.1201 is called "color". The color property can be set on classes, ids or directly on the HTML element.

This example shows how text in the color `rgb(226, 186, 188)` looks like.

```
.text, #text, p{  
    color:rgb(226, 186, 188)  
}
```

If you want to add a text shadow in that color use the text-shadow property, you can generate a text shadow directly with our [CSS Text Shadow Generator](#).

Here you see how black text with a 4 pixel rgb(226, 186, 188) colored shadow looks like.

```
.shadow{ text-shadow: 4px 4px 2px rgb(226, 186, 188) }
```

Border

The CSS property to change the border of an element to XYZ 58.0000, 54.9174, 55.1201 is called "border". The border property can be set on classes, ids or directly on the HTML element.

This example shows the color as border, it can be applied via the CSS property "border" or "border-color".

```
.border, #border, table{ border:4px solid rgb(226, 186, 188) }
```


If only the border color should be changed use the property `border-color`.

```
.border{ border-color:rgb(226, 186, 188) }
```

If you want to add a box shadow in that color use:

Here you see how a box with a 4 pixel `rgb(226, 186, 188)` colored shadow looks like.

```
.boxshadow{ -moz-box-shadow:4px 4px 4px  
4px rgb(226, 186, 188); -webkit-box-  
shadow:4px 4px 4px 4px rgb(226, 186, 188);  
box-shadow:4px 4px 4px 4px rgb(226, 186,  
188) }
```

Background

The CSS property to change the background color of an element to XYZ 58.0000, 54.9174, 55.1201 is called "background". The background property can be set on classes, ids or directly on the HTML element.

```
.background, #background, body{  
background: rgb(226, 186, 188) }
```

If only the background color should be changed can be used:

```
.background{ background-color: rgb(226,  
186, 188) }
```

This example shows the color as background, it is applied via the CSS property "background".

To optimize and compress your CSS code, you can use our [online CSS compressor and optimizer](#) based on csstidy. If you want to create a linear or radial gradient as background or border, check our [CSS Gradient Generator](#).

Hey! You found this booklet interesting? Support Converting Colors with the new Membership Option!

The pro membership hides all ads, plus gives you double the colors in the color bucket, and more awesome pro features!

[Learn more, Memberships starting at \\$2.50/m!](#)

**Follow me
on Twitter!**

@ConvertingColor