

Converting Colors

XYZ(58.1277, 58.1100, 60.9809)

Have a look what the booklet for
XYZ(58.1277, 58.1100, 60.9809)
contains.

XYZ(58.1369, 58.1100, 60.9755)	3
<i>Conversions</i>	4
<i>Details</i>	6
<i>Harmonies</i>	12
<i>Previews</i>	24
<i>Color Blindness Simulation</i>	28
<i>CSS Examples</i>	31

Color

**XYZ(58.1369, 58.1100,
60.9755)**

Conversions

Conversions Part 1

Format	Color
Hex	D8C4C5
RGB	216, 196, 197
RGB Percent	85%, 77%, 77%
CMY	0.1529, 0.2314, 0.2274
CMYK	0.00, 0.09, 0.09, 0.15
HSL	357°, 20%, 81%
HSV	357°, 9%, 85%
XYZ	58.1369, 58.1100, 60.9755
YIQ	202.0940, 11.5990, 4.5510

Conversions

Conversions Part 2

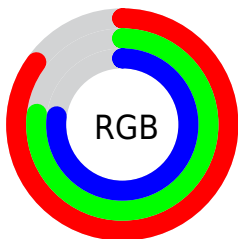
Format	Color
R _Y B	216, 196, 197
Decimal	14206149
CIE Lab	80.80, 7.19, 2.04
CIE LCh	81, 7.476, 15.869
Yxy	58.1100, 0.3280, 0.3279
Android (android.graphics.Color)	4292396229 (0xFFD8C4C5)
YUV	202.0940, -2.5113, 12.1956
Hunter-Lab	76.2299, 2.7310, 5.9355

Details

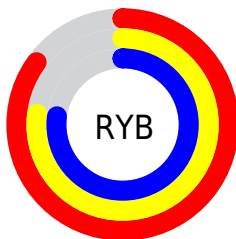
The XYZ color **58.1369, 58.1100, 60.9755** is a light color, and the websafe version is hex **CCCCCC**. A complement of this color would be **59.5888, 65.7553, 73.8447**, and the grayscale version is **56.2092, 59.1364, 64.3995**.

A 20% lighter version of the original color is **94.2547, 98.6663, 107.8427**, and **29.3289, 28.9062, 30.0203** is the 20% darker color. If you saturate the color by 10%, you get **51.4175, 48.1815, 47.9123**, and if you desaturate by 10%, it is **65.8812, 69.5746, 75.9614**.

Distribution



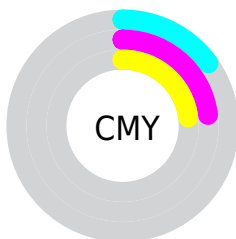
- Red (85%)
- Green (77%)
- Blue (77%)



- Red (85%)
- Yellow (77%)
- Blue (77%)



- Cyan (0%)
- Magenta (9%)
- Yellow (9%)
- Black (15%)



- Cyan (15%)
- Magenta (23%)
- Yellow (23%)

Brightness & Saturation Gradients

These gradients show how the XYZ color 58.1369, 58.1100, 60.9755 changes by changing the brightness by 10 percent. The first figure shows a shift by +10% for each color and the second figure -10%.

Similar to the brightness gradients but the following saturation gradients show a change of the XYZ color 58.1369, 58.1100, 60.9755 by changing the saturation by 10% instead.

■ 58.1369, 58.1100,
60.9755

■ 58.1369, 58.1100,
60.9755

407.6415,
417.5957, 446.0882

■ 42.1624, 41.8971,
43.7750

□ 101.2440,
102.0830, 107.8006

■ 29.4201, 29.0207,
30.1577

129.1073,
130.6119, 138.2623

■ 19.5448, 19.0965,
19.7053

161.6643,
164.0150, 173.9815

■ 12.1709, 11.7400,
11.9990

199.2803,
202.6765, 215.3767

■ 6.9332, 6.5669,
6.6205

242.3207,
246.9809, 262.8664

■ 3.4663, 3.1928,
3.1511

291.1508,

■ 1.4049, 1.2332,

297.3127, 316.8692

1.1723

346.1359,
354.0561, 377.8036

■ 0.2597, 0.0886,
0.0000

■ 0.0000, 0.0000,
0.0000

■ 58.1369, 58.1100,
60.9755

■ 58.1369, 58.1100,
60.9755

■ 51.4175, 48.1815,
47.9123

■ 65.8812, 69.5746,
75.9614

■ 45.6754, 39.7165,
36.6905

■ 74.6858, 82.6284,
92.9394

■ 40.8666, 32.6482,
27.2283

■ 82.1292, 93.3391,
108.2953

■ 36.9417, 26.9015,
19.4366

■ 33.8469, 22.3943,
13.2182

■ 31.5224, 19.0355,
8.4662

■ 29.9005, 16.7211,
5.0601

■ 28.9016, 15.3288,
2.8604

■ 28.4048, 14.6612,
1.6898

Harmonies

Analogous

The Analogous color harmony consists of three colors that are next to each other on the color wheel.



58.1610, 58.1100, 65.3705



58.1369, 58.1100, 60.9755



57.3249, 58.1100, 57.3636

Triad

The Triadic color harmony groups three colors that are evenly spaced from another and form a triangle on the color wheel.



58.1369, 58.1100, 60.9755



53.1283, 58.1100, 57.5345



54.5102, 58.1100, 71.8801

Complementary

The Complementary color scheme is a pair of colors which are on the opposite of each other on the color wheel.



58.1369, 58.1100, 60.9755



59.5888, 65.7553, 73.8447

Split Complementary

Split-complementary colors differ from the complementary color scheme. The scheme consists of three colors, the original color and two neighbors of the complement color.



53.1903, 58.1100, 69.5726



58.1369, 58.1100, 60.9755



52.4027, 58.1100, 61.2187

Square

The Square scheme is like the rectangle color scheme, but the four colors are evenly spaced on the color wheel.



58.1369, 58.1100, 60.9755



54.4240, 58.1100, 55.4410



52.4251, 58.1100, 65.6253



56.0475, 58.1100, 71.8075

Rectangle

The Rectangle color scheme consists of four colors that form a rectangle on the color wheel.



58.1369, 58.1100, 60.9755



56.4544, 58.1100, 55.8256



52.4251, 58.1100, 65.6253



54.0270, 58.1100, 71.3526

Sweetspot

The Sweet Spot groups the original color and five complimentary colors.



58.1385, 58.1126, 60.9767



91.5095, 94.7564, 102.0551



60.1606, 58.8874, 73.1621



19.3893, 19.9894, 21.4620



0.0000, 0.0000, 0.0000



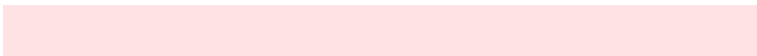
20.3446, 21.4041, 23.3091

Same Dimension

The Same Dimension uses a secret algorithm to generate beautiful new colors.



58.1385, 58.1126, 60.9767



82.7473, 81.7916, 85.0780



60.1158, 62.2491, 61.0745



12.4481, 12.4307, 13.0339



16.8086, 8.6597, 1.0300



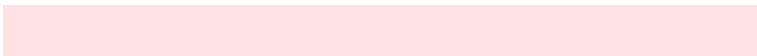
1.0228, 0.5259, 0.1096

Inverse Universe

The Inverse Universe completely reimagines the original color for something new.



58.1385, 58.1126, 60.9767



82.7473, 81.7916, 85.0780



57.4746, 61.3215, 73.7735



12.4481, 12.4307, 13.0339



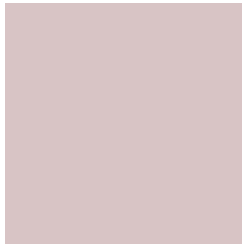
16.8086, 8.6597, 1.0300



1.0228, 0.5259, 0.1096

Previews

White Background



This preview shows how the XYZ color 58.1369, 58.1100, 60.9755 looks on a white background.

Color Contrast Check

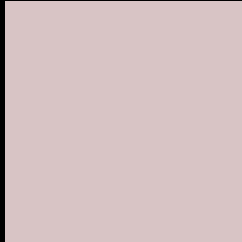
Large Text (above 18pt) WCAG AA × Fail

Any Text WCAG AA × Fail

Large Text (above 18pt) WCAG AAA × Fail

Any Text WCAG AAA × Fail

Black Background



This preview shows how the XYZ color 58.1369, 58.1100, 60.9755 looks on a black background.

Color Contrast Check

Large Text (above 18pt) WCAG AA ✓ Pass

Any Text WCAG AA ✓ Pass

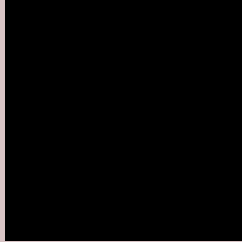
Large Text (above 18pt) WCAG AAA ✓ Pass

Any Text WCAG AAA ✓ Pass

If you want to check with other color combinations, try the [Color Contrast Checker](#).

XYZ 58.1369, 58.1100, 60.9755

Background



This preview shows how black text looks on a background with the XYZ color 58.1369, 58.1100, 60.9755.



This preview shows how white text looks on a background with the XYZ color 58.1369, 58.1100,

Color Blindness Simulation

Color vision deficiency is a very complex topic, and I could not describe the different causes any better than Wikipedia does, so if you want to learn more, you should check out their [article about color blindness](#).

Dichromacy



Original Color

58.1369, 58.1100, 60.9755

Protanopia

55.8649, 58.2694, 62.3356

Deuteranopia

59.1886, 57.9869, 60.8963



Tritanopia

59.7139, 58.0924, 68.3873

Trichromacy



Original Color

58.1369, 58.1100, 60.9755

Protanomaly

56.6289, 58.3340, 61.7010

Deuteranomaly

58.8066, 58.1215, 60.9425

Tritanomaly

59.1498, 58.1897, 65.8718

Monochromacy



Original Color

58.1369, 58.1100, 60.9755

Achromatopsia

56.1383, 59.0619, 64.3184

Achromatomaly

56.8117, 58.7441, 62.9880

CSS Examples

Text

The CSS property to change the color of the text to XYZ 58.1369, 58.1100, 60.9755 is called "color". The color property can be set on classes, ids or directly on the HTML element.

This example shows how text in the color rgb(216, 196, 197) looks like.

```
.text, #text, p{  
    color:rgb(216, 196, 197)  
}
```

If you want to add a text shadow in that color use the text-shadow property, you can generate a text shadow directly with our [CSS Text Shadow Generator](#).

Here you see how black text with a 4 pixel rgb(216, 196, 197) colored shadow looks like.

```
.shadow{ text-shadow: 4px 4px 2px rgb(216, 196, 197) }
```

Border

The CSS property to change the border of an element to XYZ 58.1369, 58.1100, 60.9755 is called "border". The border property can be set on classes, ids or directly on the HTML element.

This example shows the color as border, it can be applied via the CSS property "border" or "border-color".

```
.border, #border, table{ border:4px solid rgb(216, 196, 197) }
```


If only the border color should be changed use the property `border-color`.

```
.border{ border-color:rgb(216, 196, 197) }
```

If you want to add a box shadow in that color use:

Here you see how a box with a 4 pixel `rgb(216, 196, 197)` colored shadow looks like.

```
.boxshadow{ -moz-box-shadow:4px 4px 4px  
4px rgb(216, 196, 197); -webkit-box-  
shadow:4px 4px 4px 4px rgb(216, 196, 197);  
box-shadow:4px 4px 4px 4px rgb(216, 196,  
197) }
```

Background

The CSS property to change the background color of an element to XYZ 58.1369, 58.1100, 60.9755 is called "background". The background property can be set on classes, ids or directly on the HTML element.

```
.background, #background, body{  
background: rgb(216, 196, 197) }
```

If only the background color should be changed can be used:

```
.background{ background-color: rgb(216,  
196, 197) }
```

This example shows the color as background, it is applied via the CSS property "background".

To optimize and compress your CSS code, you can use our [online CSS compressor and optimizer](#) based on csstidy. If you want to create a linear or radial gradient as background or border, check our [CSS Gradient Generator](#).

Hey! You found this booklet interesting? Support Converting Colors with the new Membership Option!

The pro membership hides all ads, plus gives you double the colors in the color bucket, and more awesome pro features!

[Learn more, Memberships starting at \\$2.50/m!](#)

**Follow me
on Twitter!**

@ConvertingColor