

Converting Colors

XYZ(58.1334, 54.5014, 61.6756)

Have a look what the booklet for
XYZ(58.1334, 54.5014, 61.6756)
contains.

XYZ(58.0892, 54.5094, 61.4926)	3
<i>Conversions</i>	4
<i>Details</i>	6
<i>Harmonies</i>	12
<i>Previews</i>	24
<i>Color Blindness Simulation</i>	28
<i>CSS Examples</i>	31

Color

**XYZ(58.0892, 54.5094,
61.4926)**

Conversions

Conversions Part 1

Format	Color
Hex	DFB9C7
RGB	223, 185, 199
RGB Percent	87%, 73%, 78%
CMY	0.1255, 0.2745, 0.2196
CMYK	0.00, 0.17, 0.11, 0.13
HSL	338°, 37%, 80%
HSV	338°, 17%, 87%
XYZ	58.0892, 54.5094, 61.4926
YIQ	197.9580, 18.1540, 12.4100

Conversions

Conversions Part 2

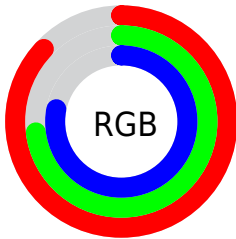
Format	Color
R _Y B	223, 185, 199
Decimal	14662087
CIE Lab	78.76, 15.88, -1.94
CIE LCh	79, 15.995, 353.028
Yxy	54.5094, 0.3337, 0.3131
Android (android.graphics.Color)	4292852167 (0xFFDFB9C7)
YUV	197.9580, 0.5137, 21.9618
Hunter-Lab	73.8305, 11.2390, 2.2993

Details

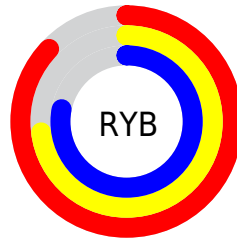
The XYZ color **58.0892, 54.5094, 61.4926** is a light color, and the websafe version is hex **FFCCCC**. A complement of this color would be **57.9060, 67.6945, 70.3392**, and the grayscale version is **53.6415, 56.4351, 61.4578**.

A 20% lighter version of the original color is **90.7453, 91.3906, 107.4651**, and **29.2984, 26.7624, 30.4095** is the 20% darker color. If you saturate the color by 10%, you get **52.2247, 45.2771, 51.8391**, and if you desaturate by 10%, it is **64.8399, 65.2704, 72.1897**.

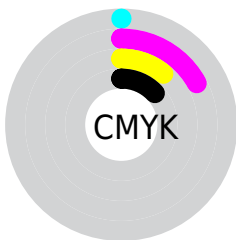
Distribution



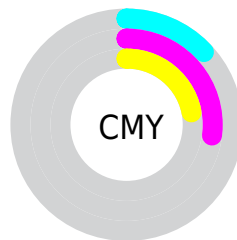
- Red (87%)
- Green (73%)
- Blue (78%)



- Red (87%)
- Yellow (73%)
- Blue (78%)



- Cyan (0%)
- Magenta (17%)
- Yellow (11%)
- Black (13%)



- Cyan (13%)
- Magenta (27%)
- Yellow (22%)

Brightness & Saturation Gradients

These gradients show how the XYZ color 58.0892, 54.5094, 61.4926 changes by changing the brightness by 10 percent. The first figure shows a shift by +10% for each color and the second figure -10%.

Similar to the brightness gradients but the following saturation gradients show a change of the XYZ color 58.0892, 54.5094, 61.4926 by changing the saturation by 10% instead.

■ 58.0892, 54.5094,
61.4926

■ 58.0892, 54.5094,
61.4926

407.4667,
404.0495, 448.0343

■ 42.1239, 39.0091,
44.1897

■ 101.1750, 96.8218,
108.5563

■ 29.3899, 26.7668,
30.4814

129.0261,
124.4026, 139.1542

■ 19.5217, 17.3981,
19.9491

161.5700,
156.7791, 175.0209

■ 12.1541, 10.5188,
12.1743

199.1719,
194.3356, 216.5748

■ 6.9217, 5.7442,
6.7385

242.1971,
237.4564, 264.2346

■ 3.4590, 2.6902,
3.2232

291.0111,

■ 1.4009, 0.9722,

286.5261, 318.4188

1.2097

345.9792,
341.9290, 379.5458

■ 0.2569, 0.0000,
0.0000

■ 0.0000, 0.0000,
0.0000

■ 58.0892, 54.5094,
61.4926

■ 58.0892, 54.5094,
61.4926

■ 52.2247, 45.2771,
51.8391

■ 64.8399, 65.2704,
72.1897

■ 47.2036, 37.4967,
43.1929

■ 72.5078, 77.6180,
83.9582

■ 42.9865, 31.0953,
35.5203

■ 81.1283, 91.6159,
96.8292

■ 39.5289, 25.9911,
28.7846

■ 84.2417, 94.4281,
108.3942

■ 36.7817, 22.0935,
22.9462

■ 34.6896, 19.2997,
17.9623

■ 33.1885, 17.4901,
13.7855

■ 32.1959, 16.5085,
10.3606

■ 31.9602, 16.2995,
9.4731

Harmonies

Analogous

The Analogous color harmony consists of three colors that are next to each other on the color wheel.



56.8262, 54.5094, 70.4649



58.0892, 54.5094, 61.4926



57.6156, 54.5094, 52.7901

Triad

The Triadic color harmony groups three colors that are evenly spaced from another and form a triangle on the color wheel.



58.0892, 54.5094, 61.4926



49.4648, 54.5094, 44.7106



48.2344, 54.5094, 74.3962

Complementary

The Complementary color scheme is a pair of colors which are on the opposite of each other on the color wheel.



58.0892, 54.5094, 61.4926



57.9060, 67.6945, 70.3392

Split Complementary

Split-complementary colors differ from the complementary color scheme. The scheme consists of three colors, the original color and two neighbors of the complement color.



46.4073, 54.5094, 66.4351



58.0892, 54.5094, 61.4926



47.0972, 54.5094, 49.4727

Square

The Square scheme is like the rectangle color scheme, but the four colors are evenly spaced on the color wheel.



58.0892, 54.5094, 61.4926



52.5519, 54.5094, 43.6754



45.9996, 54.5094, 57.2606



51.0742, 54.5094, 78.3906

Rectangle

The Rectangle color scheme consists of four colors that form a rectangle on the color wheel.



58.0892, 54.5094, 61.4926



56.3877, 54.5094, 48.2335



45.9996, 54.5094, 57.2606



47.4862, 54.5094, 72.0587

Sweetspot

The Sweet Spot groups the original color and five complimentary colors.



58.0907, 54.5118, 61.4938



89.8468, 91.6253, 100.9025



56.8047, 53.5011, 77.1456



19.0799, 19.3692, 21.3631



0.0000, 0.0000, 0.0000



20.3446, 21.4041, 23.3091

Same Dimension

The Same Dimension uses a secret algorithm to generate beautiful new colors.



58.0907, 54.5118, 61.4938



76.1233, 69.7619, 79.1143



57.4812, 55.7751, 53.6379



13.9149, 13.7836, 15.3222



18.8419, 9.6038, 5.8333



1.3482, 0.6825, 0.6264

Inverse Universe

The Inverse Universe completely reimagines the original color for something new.



58.0907, 54.5118, 61.4938



76.1233, 69.7619, 79.1143



58.5473, 66.0807, 79.4818



13.9149, 13.7836, 15.3222



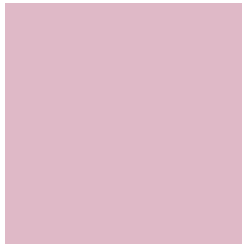
18.8419, 9.6038, 5.8333



1.3482, 0.6825, 0.6264

Previews

White Background



This preview shows how the XYZ color 58.0892, 54.5094, 61.4926 looks on a white background.

Color Contrast Check

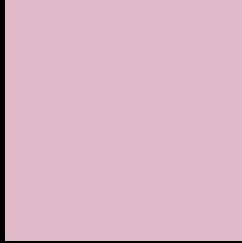
Large Text (above 18pt) WCAG AA × Fail

Any Text WCAG AA × Fail

Large Text (above 18pt) WCAG AAA × Fail

Any Text WCAG AAA × Fail

Black Background



This preview shows how the XYZ color 58.0892, 54.5094, 61.4926 looks on a black background.

Color Contrast Check

Large Text (above 18pt) WCAG AA ✓ Pass

Any Text WCAG AA ✓ Pass

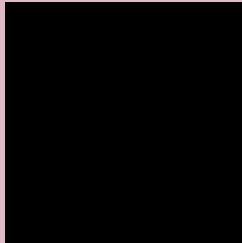
Large Text (above 18pt) WCAG AAA ✓ Pass

Any Text WCAG AAA ✓ Pass

If you want to check with other color combinations, try the [Color Contrast Checker](#).

XYZ 58.0892, 54.5094, 61.4926

Background



This preview shows how black text looks on a background with the XYZ color 58.0892, 54.5094, 61.4926.



This preview shows how white text looks on a background with the XYZ color 58.0892, 54.5094,

61.4926.

Color Blindness Simulation

Color vision deficiency is a very complex topic, and I could not describe the different causes any better than Wikipedia does, so if you want to learn more, you should check out their [article about color blindness](#).

Dichromacy



Original Color

58.0892, 54.5094, 61.4926

Protanopia

52.9558, 54.6790, 64.8898

Deuteranopia

55.5420, 54.4695, 61.0124



Tritanopia

58.0892, 54.5094, 61.4926

Trichromacy



Original Color

58.0892, 54.5094, 61.4926

Protanomaly

54.7451, 54.6477, 63.5398

Deuteranomaly

56.4952, 54.6426, 60.9955

Tritanomaly

58.0892, 54.5094, 61.4926

Monochromacy



Original Color

58.0892, 54.5094, 61.4926

Achromatopsia

53.6758, 56.4712, 61.4971

Achromatomaly

54.9951, 55.4825, 61.2367

CSS Examples

Text

The CSS property to change the color of the text to XYZ 58.0892, 54.5094, 61.4926 is called "color". The color property can be set on classes, ids or directly on the HTML element.

This example shows how text in the color `rgb(223, 185, 199)` looks like.

```
.text, #text, p{  
    color:rgb(223, 185, 199)  
}
```

If you want to add a text shadow in that color use the text-shadow property, you can generate a text shadow directly with our [CSS Text Shadow Generator](#).

Here you see how black text with a 4 pixel rgb(223, 185, 199) colored shadow looks like.

```
.shadow{ text-shadow: 4px 4px 2px rgb(223, 185, 199) }
```

Border

The CSS property to change the border of an element to XYZ 58.0892, 54.5094, 61.4926 is called "border". The border property can be set on classes, ids or directly on the HTML element.

This example shows the color as border, it can be applied via the CSS property "border" or "border-color".

```
.border, #border, table{ border:4px solid rgb(223, 185, 199) }
```


If only the border color should be changed use the property `border-color`.

```
.border{ border-color:rgb(223, 185, 199) }
```

If you want to add a box shadow in that color use:

Here you see how a box with a 4 pixel `rgb(223, 185, 199)` colored shadow looks like.

```
.boxshadow{ -moz-box-shadow:4px 4px 4px  
4px rgb(223, 185, 199); -webkit-box-  
shadow:4px 4px 4px 4px rgb(223, 185, 199);  
box-shadow:4px 4px 4px 4px rgb(223, 185,  
199) }
```

Background

The CSS property to change the background color of an element to XYZ 58.0892, 54.5094, 61.4926 is called "background". The background property can be set on classes, ids or directly on the HTML element.

```
.background, #background, body{  
background: rgb(223, 185, 199) }
```

If only the background color should be changed can be used:

```
.background{ background-color: rgb(223,  
185, 199) }
```

This example shows the color as background, it is applied via the CSS property "background".

To optimize and compress your CSS code, you can use our [online CSS compressor and optimizer](#) based on csstidy. If you want to create a linear or radial gradient as background or border, check our [CSS Gradient Generator](#).

Hey! You found this booklet interesting? Support Converting Colors with the new Membership Option!

The pro membership hides all ads, plus gives you double the colors in the color bucket, and more awesome pro features!

[Learn more, Memberships starting at \\$2.50/m!](#)

**Follow me
on Twitter!**

@ConvertingColor